



FOR LEASE

±1,196 SF

Standard/Medical Office

508 S. Sutherland Ave
Monroe, NC 28110

Isaac Harrow

Broker

O: 704.882.1700 ext. 220

M: 828.320.1986

iharrow@themosergroupinc.com

Property Overview

508 S. Sutherland Monroe, NC 28110

- Stand alone with private parking
- Reception/waiting room, 3 private offices, break room, restroom.
- Directly across the street from the Atrium Monroe Hospital
- Monument Signage opportunity

**Asking Price -
\$20/SF MG**

Property Details

Address 508 S. Sutherland Ave
Monroe, NC 28110

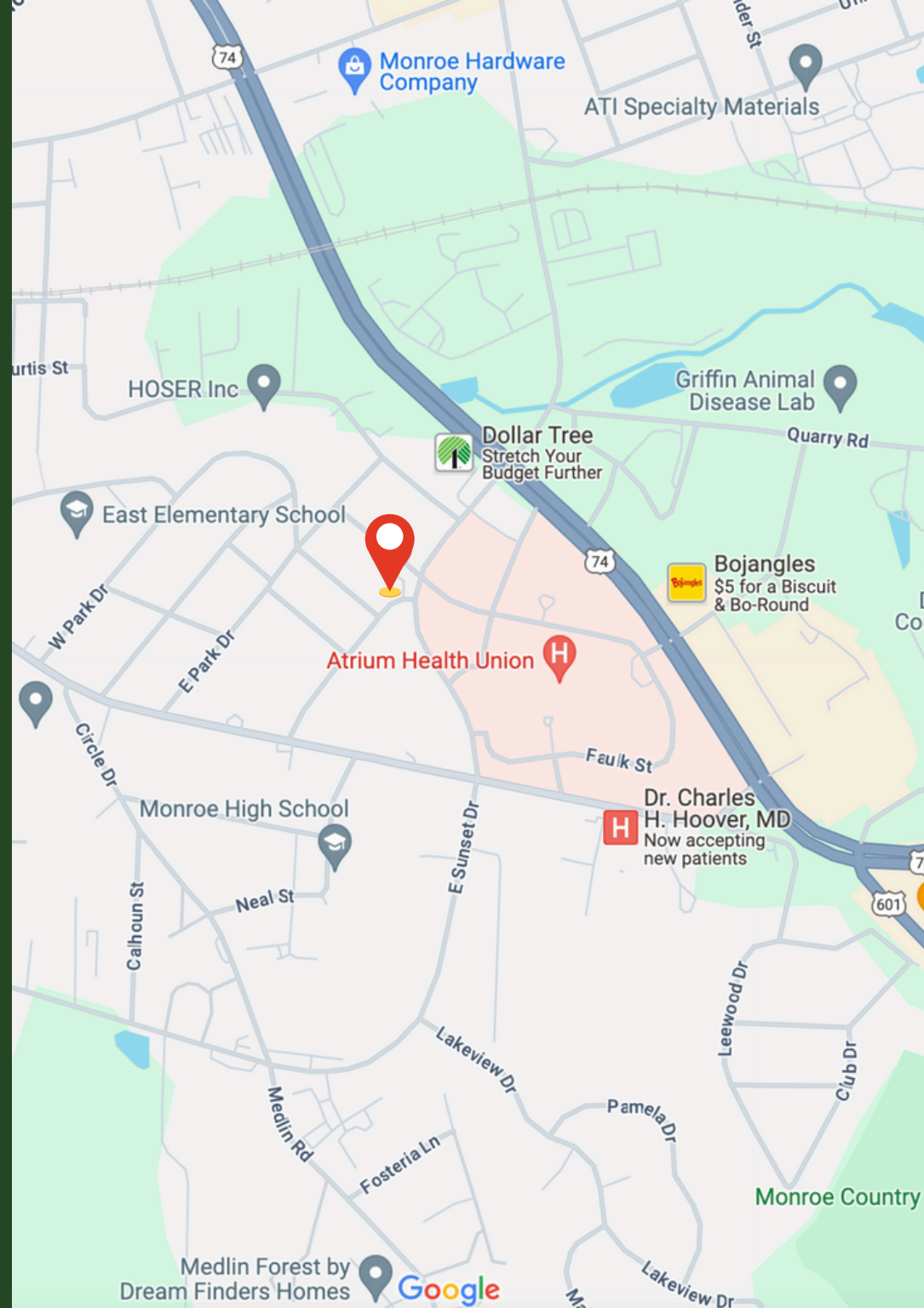
Zoning Office/Medical (OM)

Parcel ID 09194132

Space Available +/- 1,196 SF

County Union County

Additional Tenant pays utilities

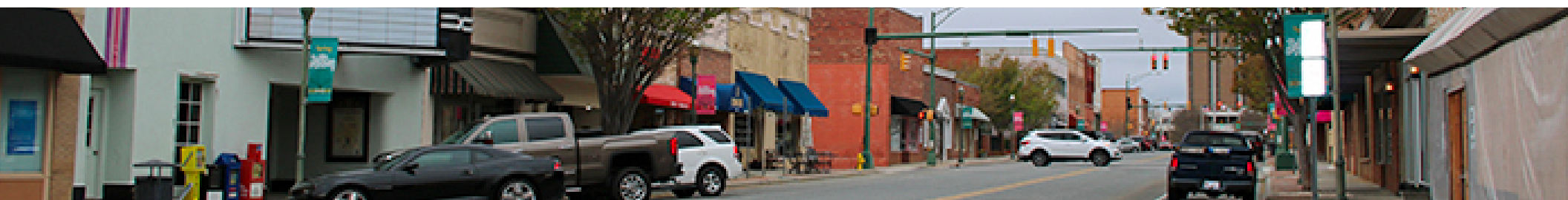
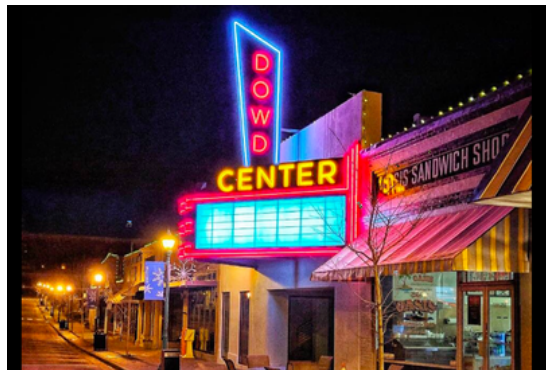




Monroe

North Carolina

The city of Monroe is a vibrant and progressive city that serves as the hub of retail, government, culture, and industry in Union County. From the large historic district complete with stately homes and a newly revitalized downtown to its industrial core attracting businesses from across the globe to the ever-growing retail marketplace, Monroe has something to offer to all.





±1,196 SF | Available For Lease



Isaac Harrow

Broker

O: 704.882.1700 ext. 220

M: 828.320.1986

iharrow@themosergroupinc.com

508 S. Sutherland Ave
Monroe, NC 28110