



Freestanding Building

131 Marlene Drive

Nicholasville, Kentucky 40356

Property Highlights

- Great opportunity available in Brannon Crossing!
- +/-30,667 SF freestanding building on +/-2.4 acres for sale
- Seller agrees to leaseback the property for 6-12 months
- Adjacent to Bob Evans, Zips Carwash and Kroger
- Situated in front of Brannon Crossing with excellent visibility from Nicholasville Road (US 27)
- First floor (+/-20,667 SF) primarily consists of open retail space, two rear offices and restrooms
- Second floor includes a +/-10,000 SF mezzanine (offices, restrooms and warehouse)
- Built in 2007 with 68 on-site parking spaces
- Brannon Crossing is an 100+ acre development, strategically located +/-1 mile south of Man O' War Boulevard
- Major draws for the center include one of the largest Kroger supermarkets in Kentucky, Hobby Lobby, Petsmart, HomeGoods, Marshalls and numerous successful restaurants and retailers

Offering Summary

Sale Price:	\$3,590,000
Building Size:	30,667 SF
Lot Size:	2.4 Acres

For More Information

Al Isaac

President

O: 859 422 4400

alisaac@naiisaac.com | KY #223721

Paul Ray Smith, Jr

Executive Vice President

O: 859 422 4401

prsmith@naiisaac.com | KY #183529



Commercial Real Estate Services, Worldwide.

For Sale

30,667 SF | \$3,590,000

Retail Space



NO WARRANTY OR REPRESENTATION, EXPRESS OR IMPLIED, IS MADE AS TO THE ACCURACY OF THE INFORMATION CONTAINED HEREIN, AND THE SAME IS SUBMITTED SUBJECT TO ERRORS, OMISSIONS, CHANGE OF PRICE, RENTAL OR OTHER CONDITIONS, PRIOR SALE, LEASE OR FINANCING, OR WITHDRAWAL WITHOUT NOTICE, AND OF ANY SPECIAL LISTING CONDITIONS IMPOSED BY OUR PRINCIPALS NO WARRANTIES OR REPRESENTATIONS ARE MADE AS TO THE CONDITION OF THE PROPERTY OR ANY HAZARDS CONTAINED THEREIN ARE ANY TO BE IMPLIED.

771 Corporate Drive, Suite 500
Lexington, KY 40503
859 224 2000 tel
naiisaac.com

For Sale

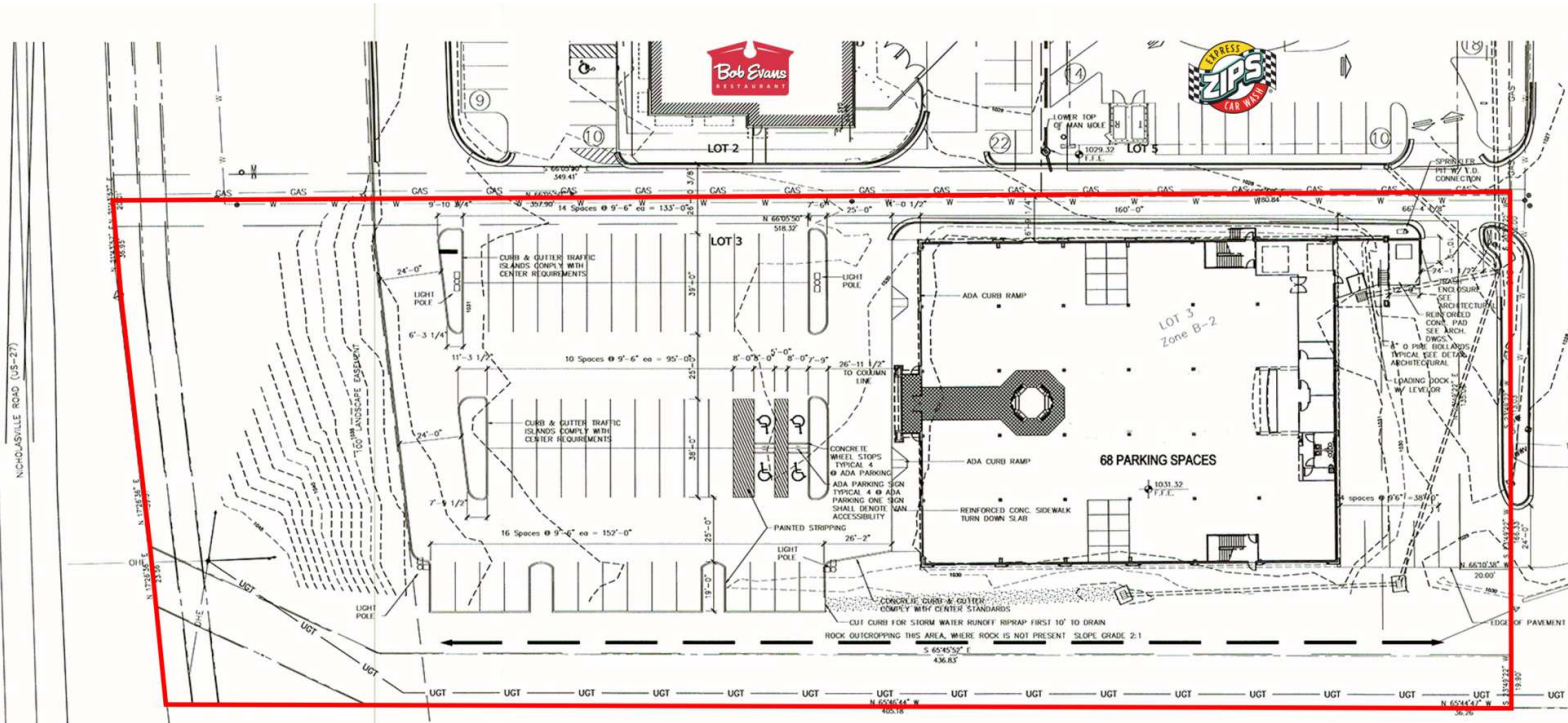
30,667 SF | \$3,590,000

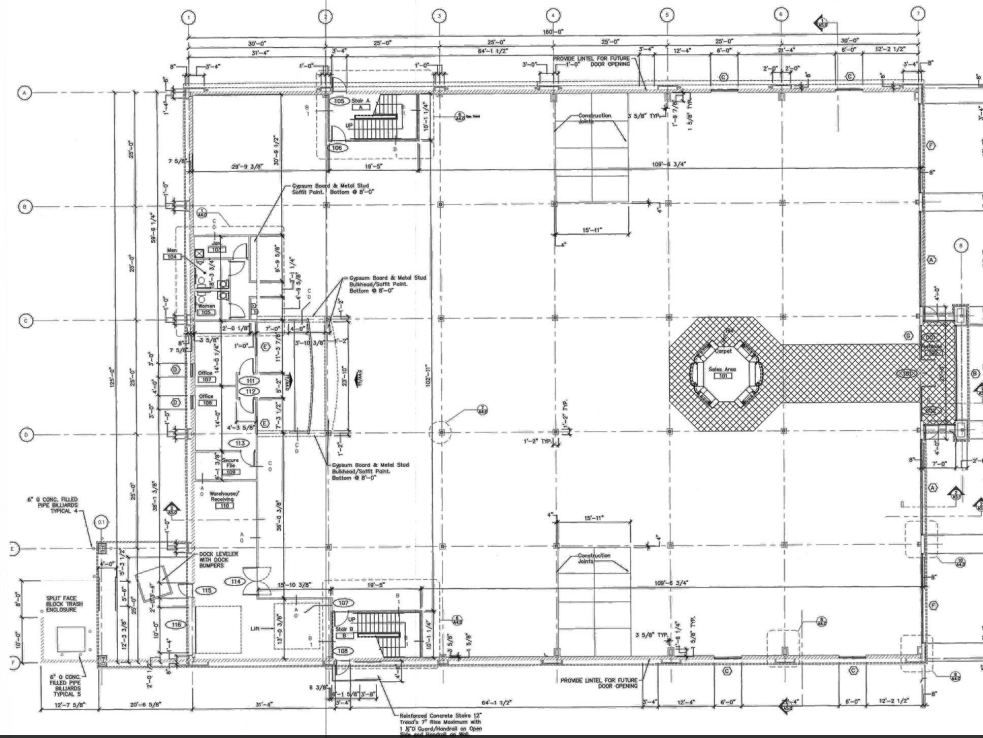
Retail Space



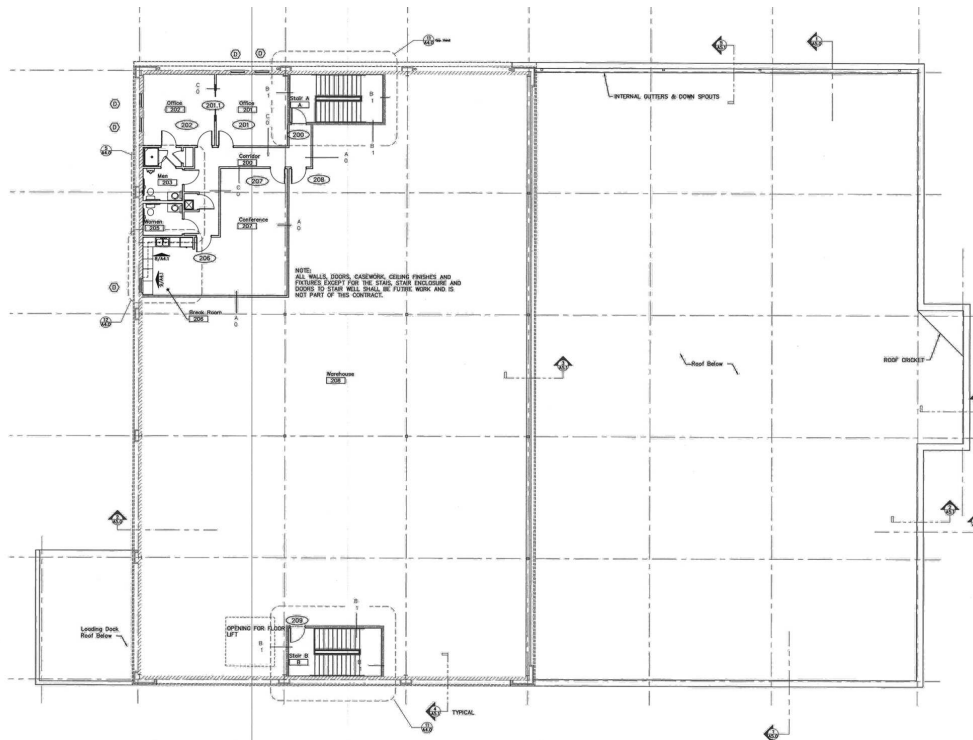
NO WARRANTY OR REPRESENTATION, EXPRESS OR IMPLIED, IS MADE AS TO THE ACCURACY OF THE INFORMATION CONTAINED HEREIN, AND THE SAME IS SUBMITTED SUBJECT TO ERRORS, OMISSIONS, CHANGE OF PRICE, RENTAL OR OTHER CONDITIONS, PRIOR SALE, LEASE OR FINANCING, OR WITHDRAWAL WITHOUT NOTICE, AND OF ANY SPECIAL LISTING CONDITIONS IMPOSED BY OUR PRINCIPALS NO WARRANTIES OR REPRESENTATIONS ARE MADE AS TO THE CONDITION OF THE PROPERTY OR ANY HAZARDS CONTAINED THEREIN ARE ANY TO BE IMPLIED.

771 Corporate Drive, Suite 500
Lexington, KY 40503
859 224 2000 tel
naiisaac.com





1st Floor



2nd Floor Mezzanine

NO WARRANTY OR REPRESENTATION, EXPRESS OR IMPLIED, IS MADE AS TO THE ACCURACY OF THE INFORMATION CONTAINED HEREIN, AND THE SAME IS SUBMITTED SUBJECT TO ERRORS, OMISSIONS, CHANGE OF PRICE, RENTAL OR OTHER CONDITIONS, PRIOR SALE, LEASE OR FINANCING, OR WITHDRAWAL WITHOUT NOTICE, AND OF ANY SPECIAL LISTING CONDITIONS IMPOSED BY OUR PRINCIPALS NO WARRANTIES OR REPRESENTATIONS ARE MADE AS TO THE CONDITION OF THE PROPERTY OR ANY HAZARDS CONTAINED THEREIN ARE ANY TO BE IMPLIED.

771 Corporate Drive, Suite 500
 Lexington, KY 40503
 859 224 2000 tel
naiisaac.com

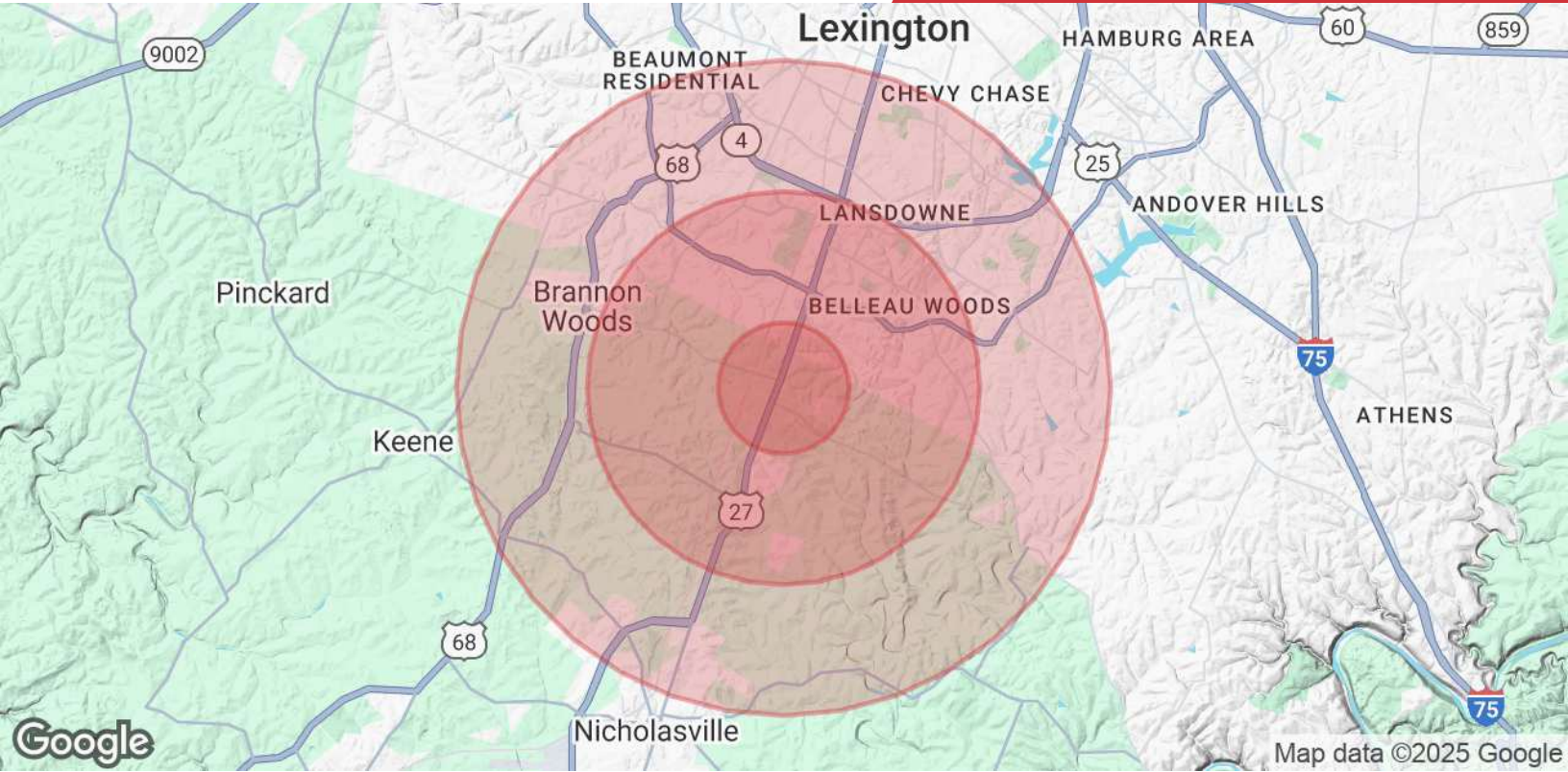


Map data ©2024 Imagery ©2024 Airbus, Maxar Technologies

NO WARRANTY OR REPRESENTATION, EXPRESS OR IMPLIED, IS MADE AS TO THE ACCURACY OF THE INFORMATION CONTAINED HEREIN, AND THE SAME IS SUBMITTED SUBJECT TO ERRORS, OMISSIONS, CHANGE OF PRICE, RENTAL OR OTHER CONDITIONS, PRIOR SALE, LEASE OR FINANCING, OR WITHDRAWAL WITHOUT NOTICE, AND OF ANY SPECIAL LISTING CONDITIONS IMPOSED BY OUR PRINCIPALS NO WARRANTIES OR REPRESENTATIONS ARE MADE AS TO THE CONDITION OF THE PROPERTY OR ANY HAZARDS CONTAINED THEREIN ARE ANY TO BE IMPLIED.

771 Corporate Drive, Suite 500
 Lexington, KY 40503
 859 224 2000 tel
naiisaac.com





Population	1 Mile	3 Miles	5 Miles
Total Population	1,820	56,624	145,227
Average Age	41	39	40
Average Age (Male)	40	38	39
Average Age (Female)	43	41	42
Households & Income	1 Mile	3 Miles	5 Miles
Total Households	660	24,085	61,964
# of Persons per HH	2.6	2.4	2.3
Average HH Income	\$140,373	\$110,400	\$113,214
Average House Value	\$381,153	\$310,378	\$339,352

Demographics data derived from 2024 STDB