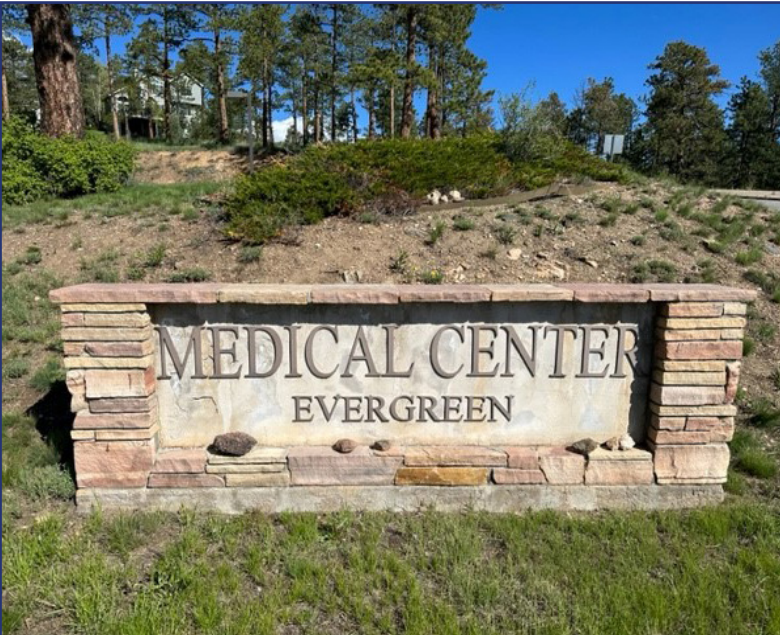




30940 STAGECOACH BLVD.
Evergreen, Colorado 80439



PROPERTY SPECIFICATIONS

Available:	Suite E-230 2,150 RSF
Furnished Medical Suite	Suite E-290 2,743 RSF
Lease Rate:	\$24.00/SF FSG
Combined Building Size:	34,937 SF
Stories:	Two
Parking:	Abundant

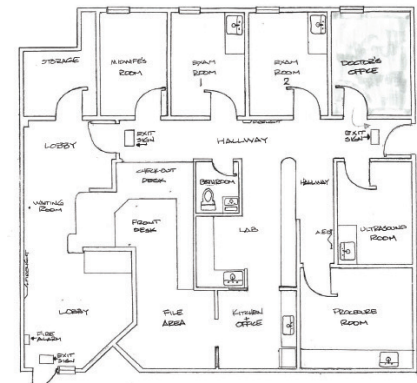
FOR MORE INFORMATION CONTACT:

JAMIE MACBETH jmacbeth@gcgcre.com 720.476.5229	RENÉE SPICER rspicer@gcgcre.com 720.476.5226
--	--

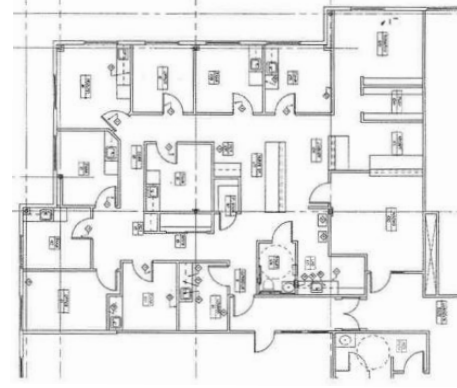
PROPERTY FEATURES

- Great North Evergreen location just off Evergreen Parkway
- Well maintained medical office complex
- Available immediately
- Join eight medical practices at Evergreen Medical Center

Suite E-230 of 2,150 RSF



Suite E-290 of 2,743 RSF



FOR MORE INFORMATION CONTACT:

JAMIE MACBETH | jmacbeth@gcgcre.com | 720.476.5229

RENÉE SPICER | rspicer@gcgcre.com | 720.476.5226