

Industrial | For Sale or Lease

Colliers

CBRE

2800 Riverport Road

±34,000 SF | ±22 AC INDUSTRIAL FACILITY IN THE HEART OF CHATTANOOGA



2800 Riverport Road
Chattanooga, TN 37406

For Sale or Lease

Property Description

Discover an industrial gem located on Riverport Road in Chattanooga. This impressive facility covers an expansive 22.7 acres and has been designated M-1 Industrial by the City of Chattanooga. The property features multiple buildings, including a spacious one story office/lab building spanning $\pm 15,000$ SF, a warehouse building containing $\pm 19,600$ SF equipped with three truck high doors and a ground level drive-in door, as well as other structures totaling 34,600 SF.

Inside the facility, you'll find an existing office building square footage of $\pm 15,000$ SF, complete with locker room style restrooms & showers, large labs/classrooms, a sizeable conference room, a spacious employee break room, and an existing warehouse building of $\pm 19,600$ SF. 2800 Riverport Road has been thoughtfully designed to cater to heavy-duty operations and is strategically located within the Hamilton County Centre Port South Industrial Park. Conveniently situated just off Amnicola Highway, this prime location adds to the appeal as an ideal industrial hub, offering easy access to Barge Port.



2800 Riverport Road
Chattanooga, TN 37406

For Sale or Lease

Property Features

- **Hamilton County Tax Parcel ID:** 127K-A-001.14
- **Total Acreage:** ±22.7 AC
- **Zoning:** M-1 Industrial
- **Existing 1 Story Office/Lab Building:** ±15,000 SF
- **Existing Warehouse Building:** ±19,600 SF with 3 truck high doors and 1 ground level drive in door
- **Restrooms:** locker room style with showers
- **Specialty Rooms:** large labs/classrooms, sizeable conference room, spacious employee breakroom
- **Location:** Hamilton County Centre Port South Industrial Park, access to a Barge Port

±34K

Total Building Square Footage

±22.7

Total Land Acreage

M-1

Zoning









ABBREVIATION LEGEND:

AE = access easement
CB = catch basin
CL = concrete monument found
CMP = corrugated metal pipe
CO = clean out
CT = crimp top pipe
CP = communication pedestal
DE = drainage easement
DI = drop inlet
DIP = ductile iron pipe
DWCB = 8" wing catch basin
FH = fire hydrant
GI = grate inlet
GW = guy wire
HW = head wall
PS = iron pin set
JB = junction box
INV = invert
L.L.L. = land lot line
LP = light pole
MHI = manhole (sanitary sewer)
OCS = outlet control structure
OT = open top pipe
PI = pedestal inlet
PL = property line
POL = power pole
PP = power pole
RB = reinforcing bar
RCP = reinforced concrete pipe
RW = right-of-way
SSE = sanitary sewer easement
SWCB = single wing catch basin
TSP = traffic signal pole
TSP = traffic signal pole
TP = telephone pole
TSP = traffic signal pole
WM = water meter
WW = water valve
YI = yard inlet

SYMBOL LEGEND:

double wing catch basin
fire hydrant
guy wire
light pole
power pole
sanitary sewer manhole
clean out
transformer
water meter
single wing catch basin
grate inlet
junction box
head wall
stop sign
buffer
bldg setback
fence
overhead electric
underground electric
water line
sanitary line
gas line
computed point

REFERENCE MATERIAL & NOTES:

- 1) ELEVATION DATUM: MEAN SEA LEVEL (NAVD 88)
- 2) TAX ID: 127K-A-001.14, Hamilton Co., TN
- 3) DEED BOOK 6250 PAGE 877, HAMILTON CO., TN
- 4) PLAT BOOK 47, PAGE 400, Hamilton Co., TN
- 5) ATTENTION IS CALLED TO THE CITY OF CHATTANOOGA CODES AS AMENDED
- 6) LOCAL GOVERNMENT DOES NOT CERTIFY THAT UTILITIES OR UTILITY CONNECTIONS ARE AVAILABLE
- 7) PUBLIC SANITARY SEWER AVAILABLE BY GRAVITY FLOW
- 8) CITY ORDINANCE # 13251 ENTITLED STORM WATER RUNOFF AND EROSION CONTROL SHALL APPLY TO ANY DISCHARGE OF THE SAME FROM THIS PROPERTY
- 9) ZONE M-1
- 10) TOTAL AREA = 22.717 ACRES±
- 11) NO FILL MATERIAL IS TO BE PLACED ON A CONSTRUCTED DRAINAGE FACILITY IN SUCH A MANNER AS TO IMPEDE STORM WATER RUNOFF FLOW UNLESS APPROVED BY THE CITY ENGINEER
- 12) ALL MATTERS OF RECORD ARE EXEMPTED FROM THIS PLAN
- 13) OWNER OF RECORD: SOFIX CORPORATION
- 14) STREET ADDRESS: 2800 RIVERPORT RD.

GPS CERTIFICATION:

I hereby certify that this map or plat was drawn under my supervision from an actual GPS survey made under my supervision and the following information was used to perform this survey:

- 1) VERTICAL DATUM: NAVD 88 (2012B)
- 2) TYPE OF SURVEY: RTK (Real Time Kinematic)
- 3) AVERAGE POSITIONAL ACCURACY PER POINT: 0.05' HORIZ.
- 4) DATUM: US STATE PLANE 1983 - NAD83 (2011), TENNESSEE 4100
- 5) FIXED CONTROL USED: SmartNet Network
- 6) GEOID MODEL: GEOID18, Ellipsoid: GRS1980
- 7) SCALE FACTOR: 1.00032507 (AT LISTED BENCHMARK)
- 8) DATE OF FIELDWORK: 07/09/2024

Mario G. Forte
Mario G. Forte, P.S.
TN-1959GA-2721

SURVEYOR CERTIFICATION:

To: Equity Resource Partners - Riverport, LLC & First American Title Insurance Company

This is to certify that this map or plat and the survey on which it is based were made in accordance with the 2021 Minimum Standard Detail Requirements for ALTA/NSPS Land Title Surveys, jointly established and adopted by ALTA and NSPS, and includes items 1-4, 8, 9, 13, 14, 15, 16 & 18. The field work was completed on July 9, 2024.

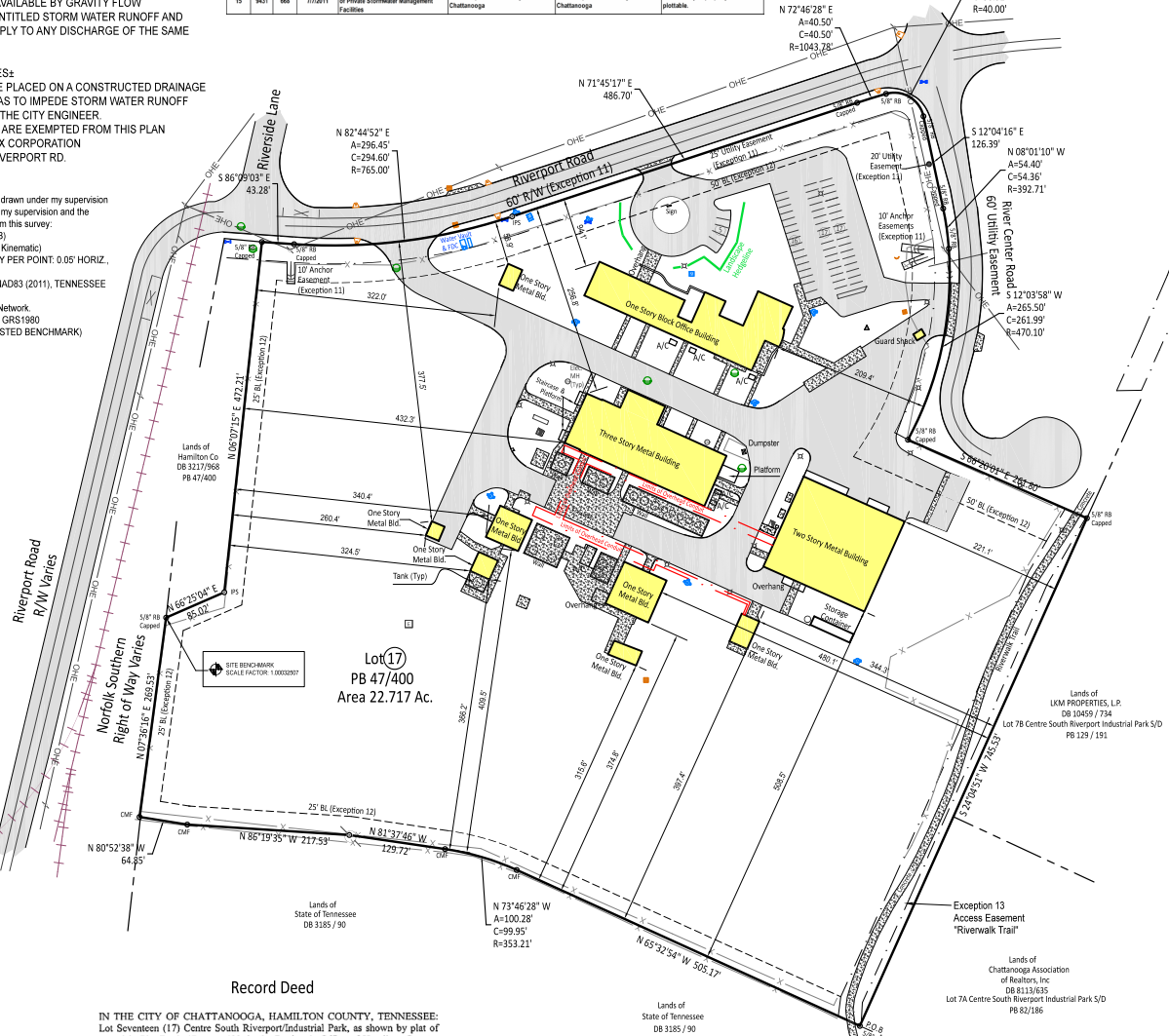
Signed: *Mario G. Forte*

Date: 07/16/24

Registration No. TN-1959



MATTERS OF RECORD - Equity Resource Partners III, LLC					COMMENT NO.	198834-0-TN-CP-NMP
First American Title Insurance Company					EFFECTIVE DATE:	June 3, 2024
Exc.	DEED BOOK	PAGE	DATE	INSTRUMENT	GRANTEE	DESCRIPTION
11	PB47	PG400		MOR on Plat		Affects as shown
12	3316	363	3/3/1987	Centre South Riverport/Industrial Park Tenant Easements and Easements	Hamilton County, TN	Affects as shown
13	0144	409	2/15/2002	Grant of Permanent Easement	Hamilton County and the City of Chattanooga	Affects as shown
14	0144	415	2/15/2002	Grant of Permanent Easement	Hamilton County and the City of Chattanooga	Does not affect
15	9421	668	7/7/2011	Interpretation and Maintenance Agreement of Private Stormwater Management Facilities	Bella Corporation and City of Chattanooga	Affects subject property. Not platable.



LOCATION MAP
NOT TO SCALE

Exception 14 EPB Easement
(Does not affect)

As-Surveyed Description

All that tract or parcel of land lying and being in the City of Chattanooga, Hamilton County, Tennessee, and being more particularly described as follows:
Beginning at a 5/8" rebar found at the corner common to the lands now or formerly held by the State of Tennessee (DB1915, PG195) and the land now or formerly held by the Chattanooga Association of Realtors, Inc. (DB1113, PG135) aka Lot 7A Centre South Riverport Industrial Park S/D (PB82, PG186), said 5/8" rebar being the POINT OF BEGINNING.
Thence, continuing along the line common to the lands now or formerly held by the State of Tennessee the following courses and distances:
Along a curve to the left with a radius of 353.21 feet, an arc length of 103.28 feet, a chord bearing of N 73°46'28" W, a chord length of 99.95 feet to a concrete monument.
N 81°37'47" W a distance of 120.72 feet.
N 80°10'20" W a distance of 217.50 feet to a concrete monument.
N 80°52'38" W a distance of 64.85 feet to a concrete monument found on the Norfolk Southern Right of Way.
Thence departing the line common to the lands now or formerly held by the State of Tennessee and along the Norfolk Southern Right of Way N 07°38'18" E a distance of 290.53 feet to a 5/8" rebar with a cap found at the corner common to the lands now or formerly held by Hamilton County (DB3217, PG668 / PB47, PG400).
Thence, continuing along the line common to the lands now or formerly held by Hamilton County the following courses and distances:
N 69°25'04" E a distance of 85.02 feet to a 1/2" rebar capped.
N 09°07'15" E a distance of 472.21 feet to a 5/8" rebar with cap found on the southern right of way of Riverport Road (60' R/W).
Thence departing the line common to the lands now or formerly held by Hamilton County and along the southern right of way of Riverport Road the following courses and distances:
Along a curve to the left with a radius of 470.10 feet, an arc length of 285.50 feet, a chord bearing of S 08°01'10" W, a chord length of 234.64 feet to a 1/2" rebar capped.
N 71°46'17" E a distance of 480.70 feet to a 5/8" rebar with a cap.
Along a curve to the right with a radius of 1043.78 feet, an arc length of 40.50 feet, a chord bearing of S 72°46'28" E, a chord length of 40.50 feet to a 5/8" rebar found at the intersection of the western right of way of River Center Road (60' Utility Easement).
Thence departing the southern right of way of Riverport Road and along the western right of way of River Center Road the following courses and distances:
S 12°04'16" E a distance of 126.39 feet to a 5/8" rebar capped.
Along a curve to the right with a radius of 40.00 feet, an arc length of 65.64 feet, a chord bearing of S 59°01'30" E, a chord length of 58.52 feet to a 5/8" rebar with a cap.
Along a curve to the right with a radius of 392.71 feet, an arc length of 54.40 feet, a chord bearing of S 08°01'10" E, a chord length of 54.36 feet to a 5/8" rebar.
Along a curve to the right with a radius of 470.10 feet, an arc length of 285.50 feet, a chord bearing of S 12°03'58" W, a chord length of 281.90 feet to a 5/8" rebar with a cap.
S 69°20'01" E a distance of 251.80 feet to a 5/8" rebar with a cap at the corner common to the lands now or formerly held by LKM Properties, LP (DB10459, PG734) aka Lot 7B Centre South Riverport Industrial Park S/D (PB129, PG191).
Thence departing the southern right of way of River Center Road and along the line common to the lands now or formerly held by LKM Properties, LP and the line common to the lands now or formerly held by Chattanooga Association of Realtors, Inc. S 24°04'51" W a distance of 745.53 feet to 5/8" rebar at the corner common to the lands now or formerly held by the State of Tennessee, said 5/8" rebar being the POINT OF BEGINNING.
Said tract contains 22.717 acres

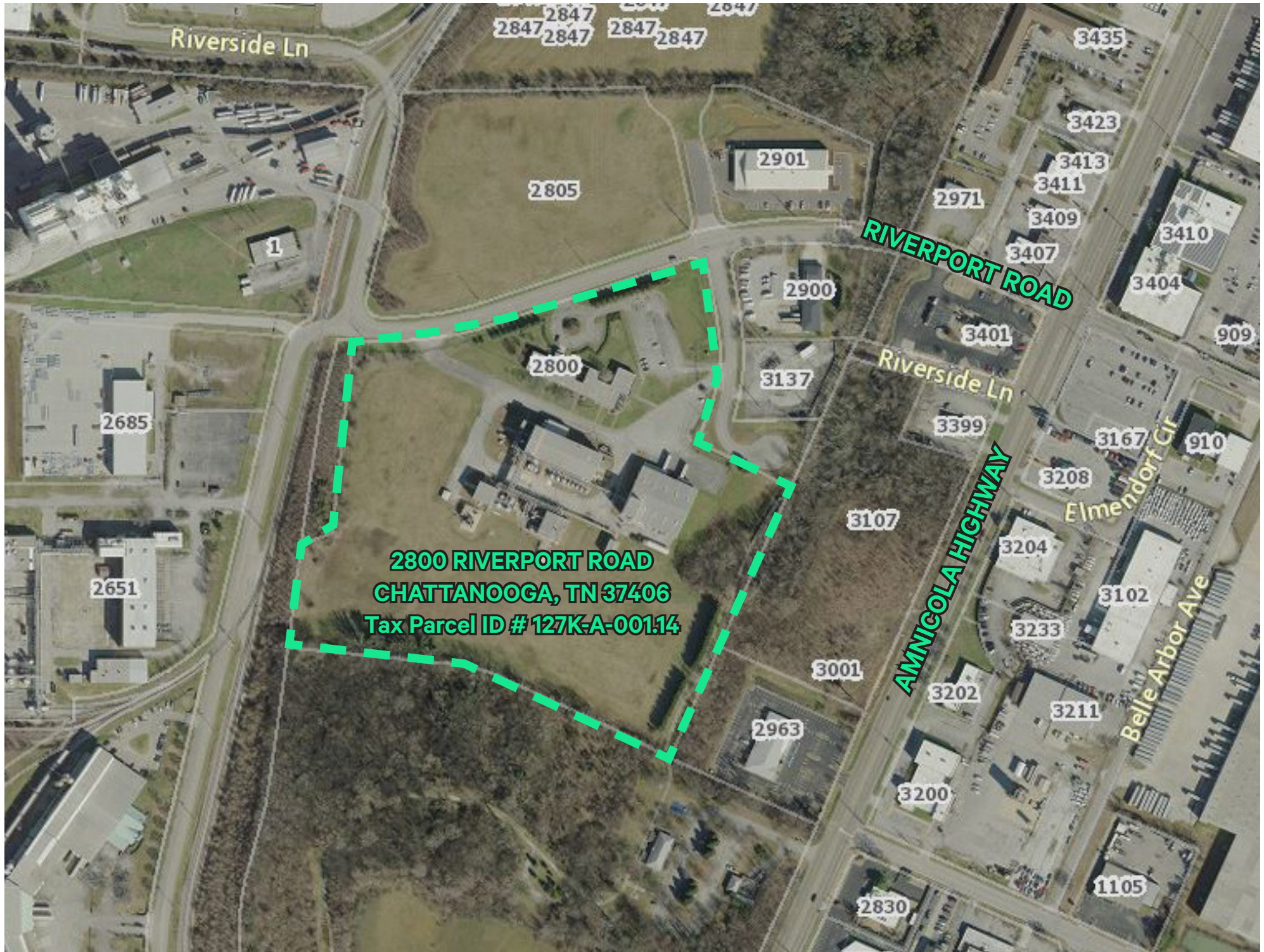
Record Deed

IN THE CITY OF CHATTANOOGA, HAMILTON COUNTY, TENNESSEE:
Lot Seventeen (17) Centre South Riverport/Industrial Park, as shown by plat of record in Plat Book 47, page 400, in the Register's Office of Hamilton County, Tennessee.

REFERENCE is made prior title to deed of record in Book 3787, page 688, in the Register's Office of Hamilton County, Tennessee.

FLOOD HAZARD NOTE:

THIS PROPERTY LIES WITHIN ZONE "X" (OUTSIDE NORMAL FLOODING) AS DEFINED BY THE FEDERAL EMERGENCY MANAGEMENT AGENCY FLOOD MAP OF CHATTANOOGA, TN COMMUNITY PANEL NUMBER 47065C-0000-G DATED FEBRUARY 3, 2016



2800 RIVERPORT ROAD
CHATTANOOGA, TN 37406
Tax Parcel ID # 127K-A-00114

2800 Riverport Road
Chattanooga, TN 37406

For Sale or Lease

Contact Us

Russell Elliott, SIOR, CCIM

Senior Vice President

+1 423 413 6767

russell.elliott@cbre.com

Ben Ricketts, SIOR

Senior Vice President | Principal

+1 901 497 5586

ben.ricketts@colliers.com

© 2025 CBRE, Inc. All rights reserved. This information has been obtained from sources believed reliable, but has not been verified for accuracy or completeness. You should conduct a careful, independent investigation of the property and verify all information. Any reliance on this information is solely at your own risk. CBRE and the CBRE logo are service marks of CBRE, Inc. All other marks displayed on this document are the property of their respective owners, and the use of such logos does not imply any affiliation with or endorsement of CBRE. Photos herein are the property of their respective owners. Use of these images without the express written consent of the owner is prohibited.