



CBRE

**FLEXIBLE TERMS
AVAILABLE!**

1100

MASSACHUSETTS AVENUE
CAMBRIDGE, MASSACHUSETTS

10,097-20,194 SF AVAILABLE

On behalf of BentallGreenOak, CBRE is pleased to announce the availability of 10,097-20,194 SF at 1100 Massachusetts Avenue in Cambridge, MA. This 46,094 SF, first class building is immediately adjacent to Harvard Square and Harvard University, providing tenants with a strong identity in a vibrant location.

ACCESS & AMENITIES

- Transit-oriented location providing easy access to Harvard and Central MBTA Red Line Stations
- Garage parking
- Proximity to numerous restaurants and retail amenities

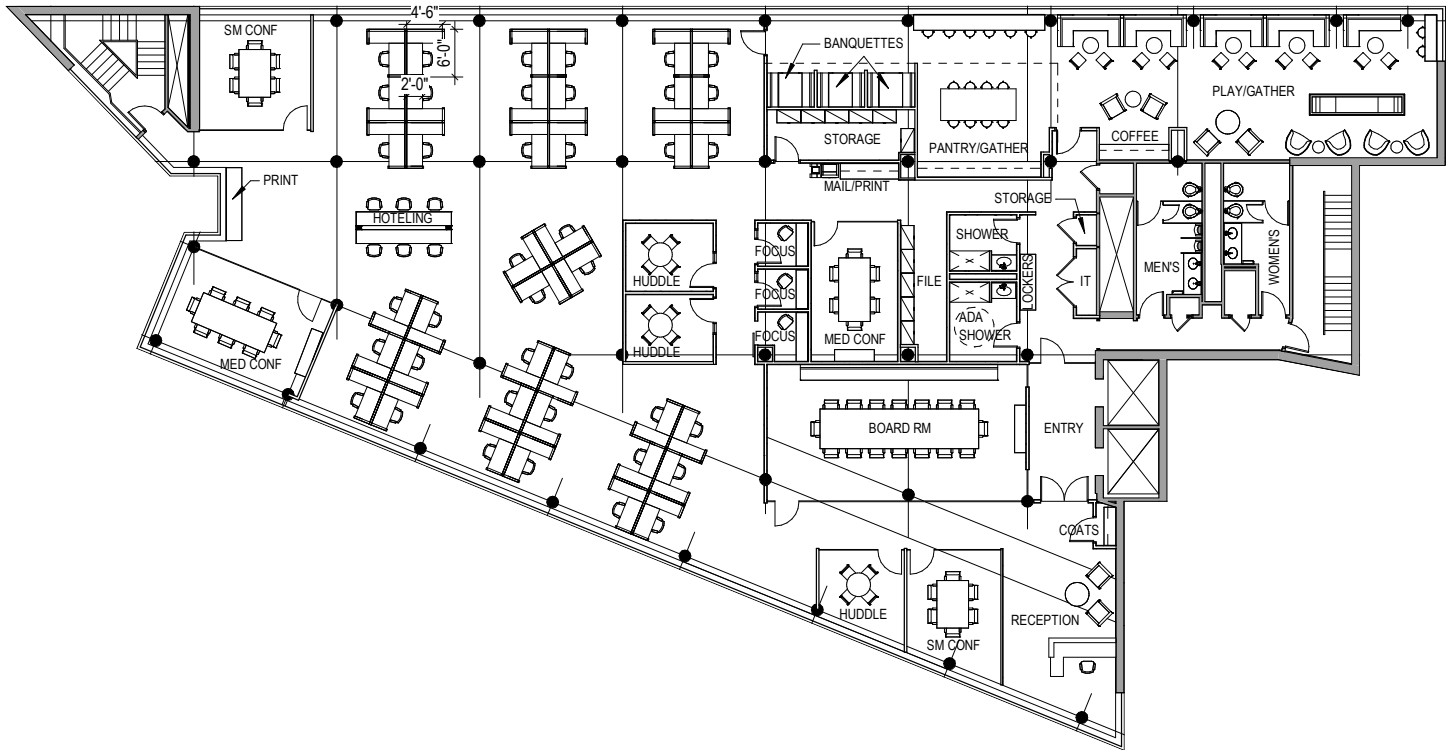


FLOOR PLANS

4TH FLOOR

10,097 SF

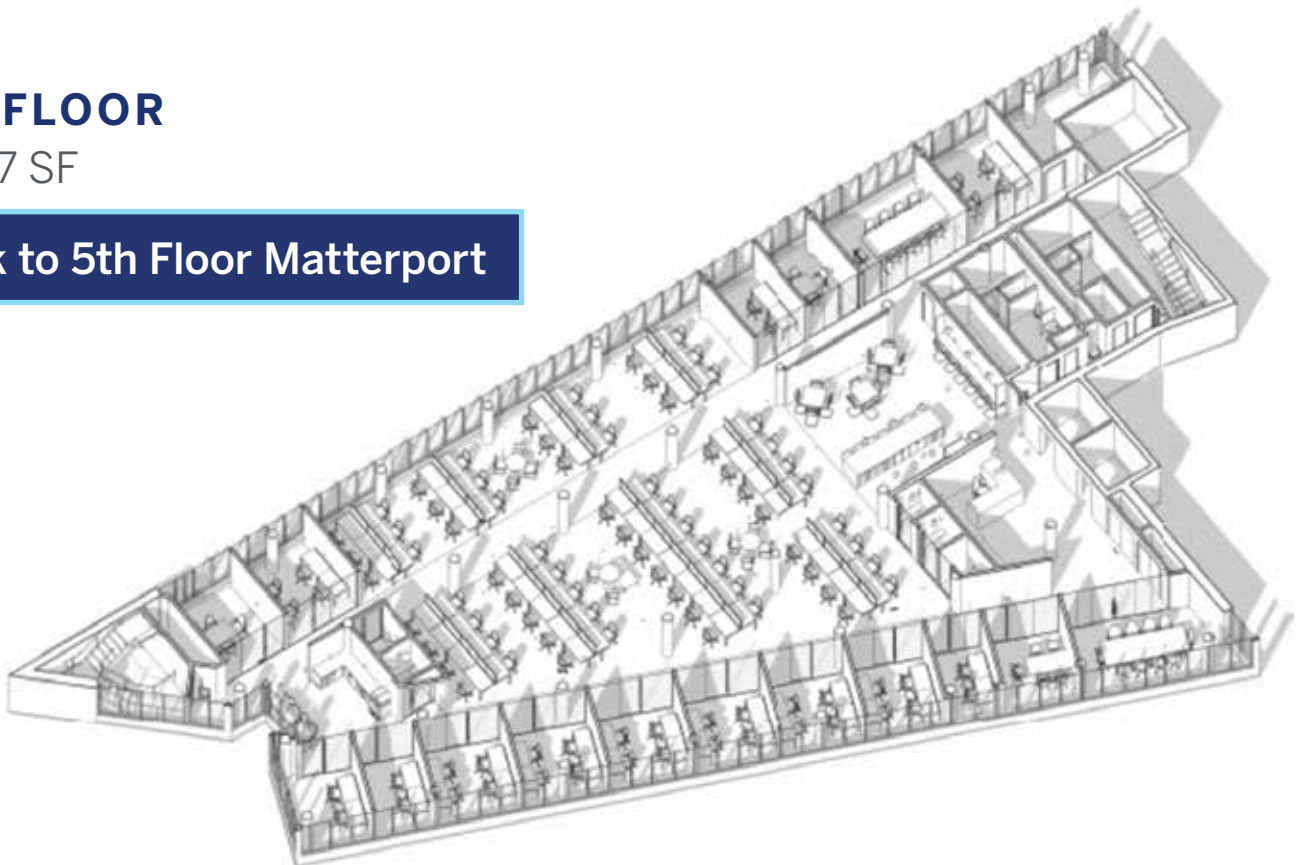
[Link to 4th Floor Matterport](#)

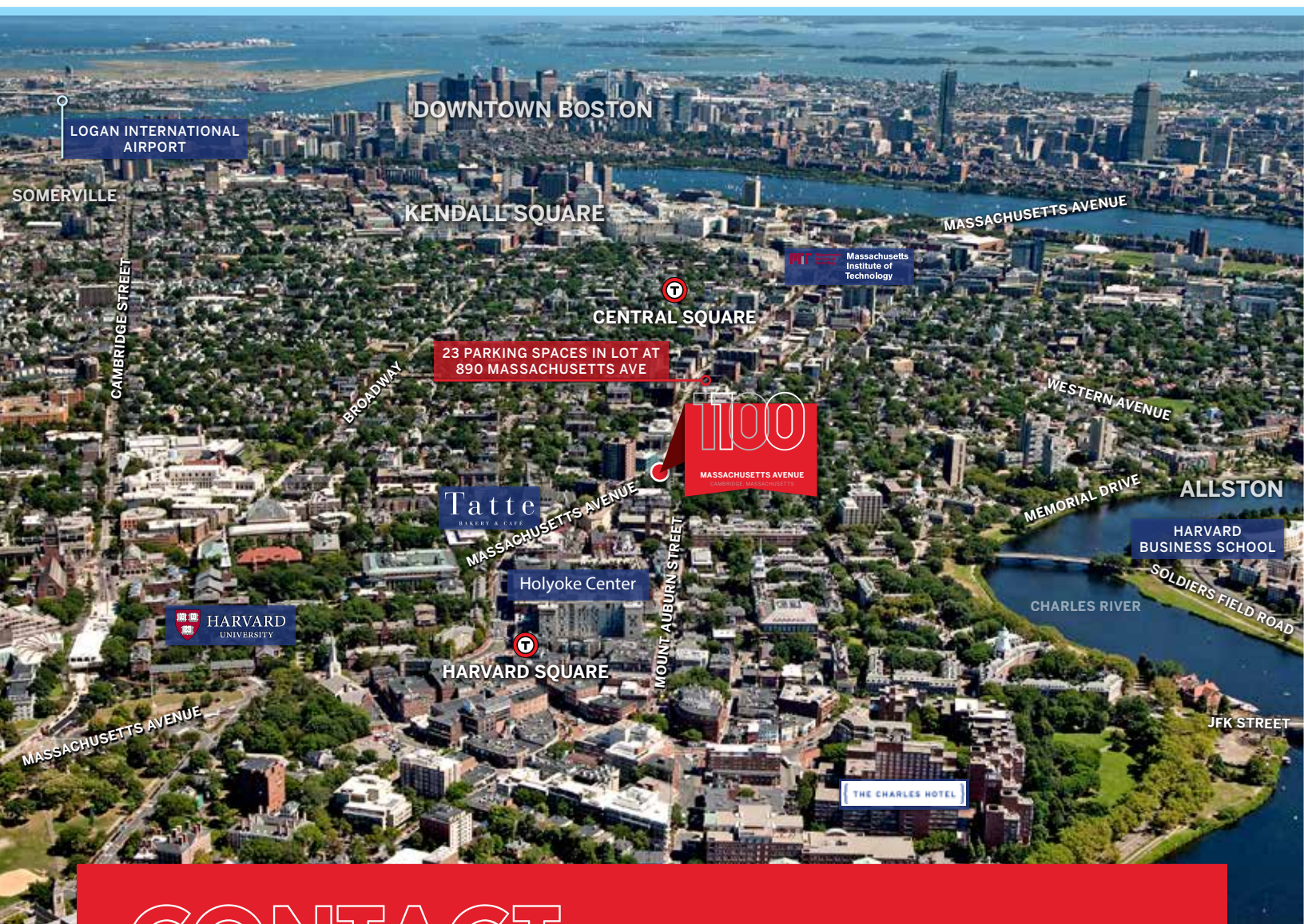


5TH FLOOR

10,097 SF

[Link to 5th Floor Matterport](#)





CONTACT

CHARLES KAVOOGIAN

Executive Vice President

+1 617 912 7079

charles.kavoogian@cbre.com

DON DOMORETSKY

Executive Vice President

+1 617 447 1376

don.domoretsky@cbre.com

TESS ST. LAWRENCE

Vice President

+1 617 439 7812

tess.stlawrence@cbre.com

JACK SCRIBNER

Associate

+1 857 354 7301

jack.scribner@cbre.com



© 2024 CBRE, Inc. All rights reserved. This information has been obtained from sources believed reliable, but has not been verified for accuracy or completeness. You should conduct a careful, independent investigation of the property and verify all information. Any reliance on this information is solely at your own risk. CBRE and the CBRE logo are service marks of CBRE, Inc. All other marks displayed on this document are the property of their respective owners, and the use of such logos does not imply any affiliation with or endorsement of CBRE.