

LOT 37

112 WEBSTER DRIVE
CAROLYN C. MONTGOMERY
VOLUME 3140, PAGE 25
O.P.R.G.C.T.
LOT 38, BLOCK 2
GREENFIELD VILLAGE UNIT 2
VOLUME 4, PAGE 14
P.R.G.C.T.

MICHAEL G. TIGHE
AND JOHN E. SAUNDERS
VOLUME 4238, PAGE 6
O.P.R.G.C.T.
LOT 39, BLOCK 2
GREENFIELD VILLAGE UNIT 2
VOLUME 4, PAGE 14
P.R.G.C.T.

933 FM 3009
933 FM 3009, LLC
VOLUME 4112, PAGE 59
O.P.R.G.C.T.

LOT 3, BLOCK 3
OF THE FINAL VACATE AND
REPLAT ESTABLISHING
BLACKBURN ELBEL SUBDIVISION
VOLUME 7, PAGE 602
O.P.R.G.C.T.

LOT 4, BLOCK 3
FINAL VACATE AND REPLAT ESTABLISHING
BLACKBURN ELBEL SUBDIVISION
VOLUME 7, PAGE 602
O.P.R.G.C.T.

LOT 4, BLOCK 3
LOT 5, BLOCK 3

2.043 ACRES
A PORTION OF
"TRACT 1"
SCHERTZ 3009, LTD.,
A TEXAS LIMITED PARTNERSHIP
VOLUME 2188, PAGE 834
O.P.R.G.C.T.

SANITARY MANHOLE
TOP = 708.0'
DEPTH = 7.4'
FL 8" PVC NE = 700.6'
FL 8" PVC SW = 700.6'

10' UTILITY EASEMENT
VOLUME 3, PAGE 343A
O.P.R.G.C.T.

10' SEWER EASEMENT
VOLUME 7, PAGE 602
O.P.R.G.C.T.

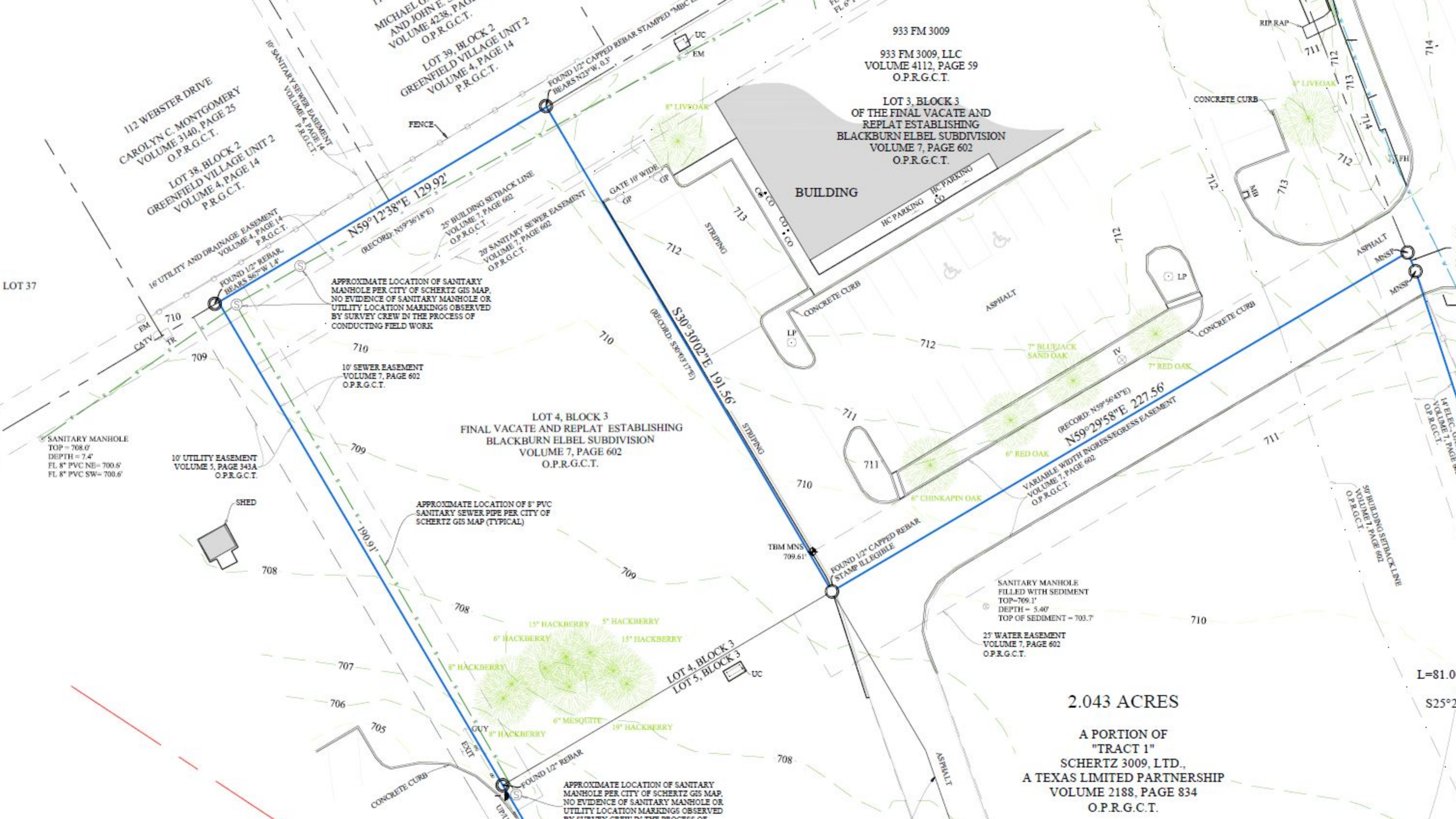
APPROXIMATE LOCATION OF SANITARY
MANHOLE PER CITY OF SCHERTZ GIS MAP.
NO EVIDENCE OF SANITARY MANHOLE OR
UTILITY LOCATION MARKINGS OBSERVED
BY SURVEY CREW IN THE PROCESS OF
CONDUCTING FIELD WORK

APPROXIMATE LOCATION OF 8" PVC
SANITARY SEWER PIPE PER CITY OF
SCHERTZ GIS MAP (TYPICAL)

APPROXIMATE LOCATION OF SANITARY
MANHOLE PER CITY OF SCHERTZ GIS MAP.
NO EVIDENCE OF SANITARY MANHOLE OR
UTILITY LOCATION MARKINGS OBSERVED
BY SURVEY CREW IN THE PROCESS OF

SANITARY MANHOLE
FILLED WITH SEDIMENT
TOP = 709.1'
DEPTH = 5.40'
TOP OF SEDIMENT = 703.7'

25' WATER EASEMENT
VOLUME 7, PAGE 602
O.P.R.G.C.T.



L=81.00',
Δ=S25°25'3