



FOR LEASE

1828 JEFFERSON STREET NE  
MINNEAPOLIS, MN 55418

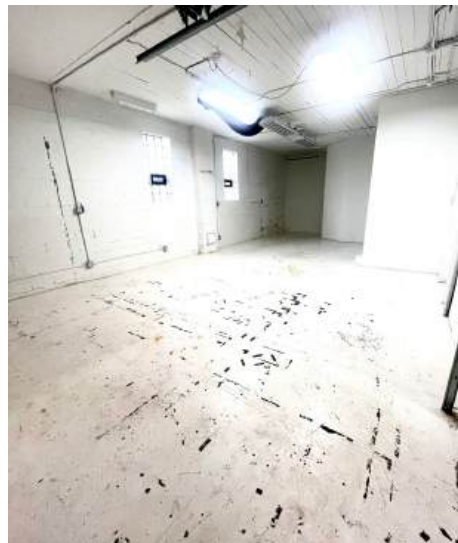
Anders Priley | [AEPriley@cbrealty.com](mailto:AEPriley@cbrealty.com) | 218-310-0876



Available now, located in the heart of the Northeast Arts District, 1828 Jefferson St NE has one vacancy, a suite of 2,000sqft of warehouse/art space available for immediate occupancy.

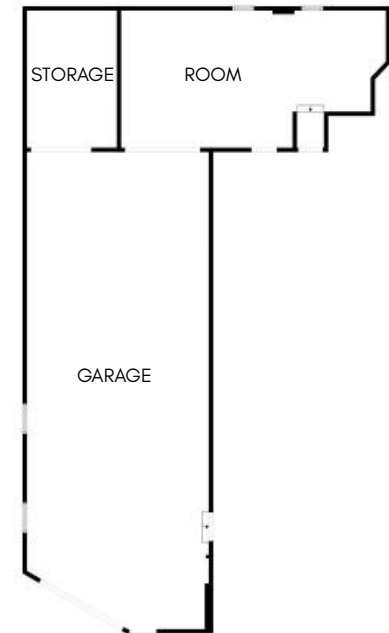
The space features a 10' high drive-in door with a 13 foot clear height. The space is heated and has a storage room and an office. The rent is \$5,000 per month gross with tenants having access to the building's shared common areas which include bathrooms, a large kitchen, and large printer/scanner located in the mail room. The rent also includes wifi and utilities with no additional cam or tax.

The space is perfect for a dance studio, photography studio, estate sales, storage, landscaping company, glass blowing, 3D printing, traditional printing and many other options. Please reach out now to schedule a tour and to learn more about how you can join the other great tenants located in the building.



#### PROPERTY HIGHLIGHTS

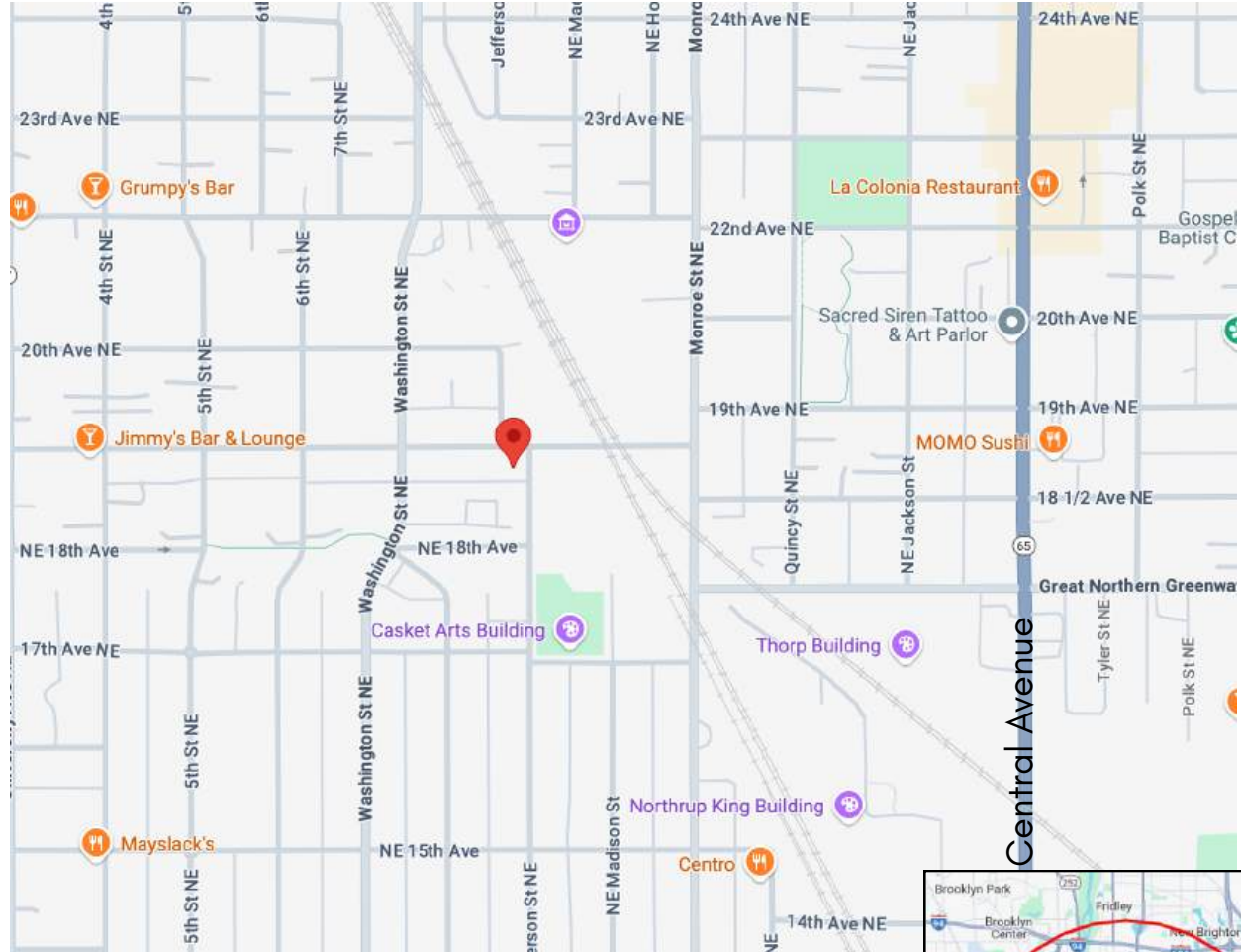
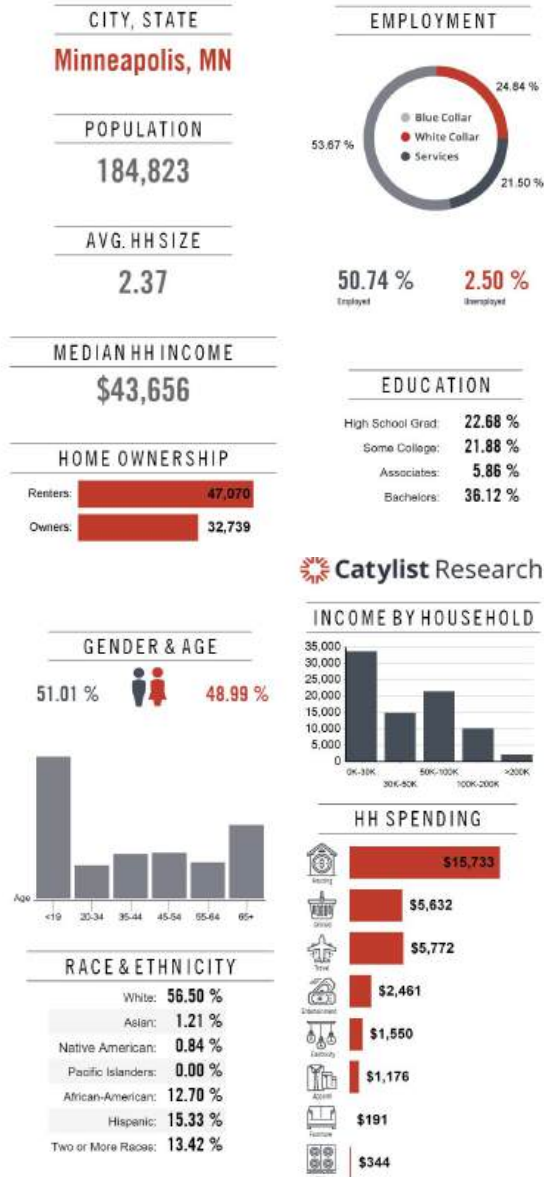
- Suites Available: I, J & K
- Year Built: 1925
- Available Date: Now
- Rate: \$5,000/Month Gross
- Square Feet: 2000sqft
- Clear Height: 13 Feet
- Door Height: 10 Feet





## Location Facts & Demographics

Demographics are determined by a 10 minute drive from 1828 Jefferson St NE, Minneapolis, MN 55418



## PROPERTY HIGHLIGHTS

- Well Cared for Building
- Heated
- Great Location

MOODY'S ANALYTICS | Catlyst

