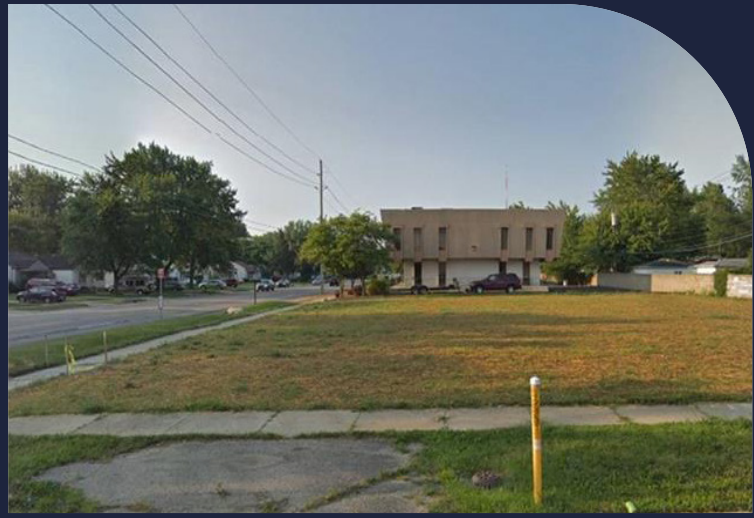


28165 GREENFIELD

SOUTHFIELD, MICHIGAN 48076

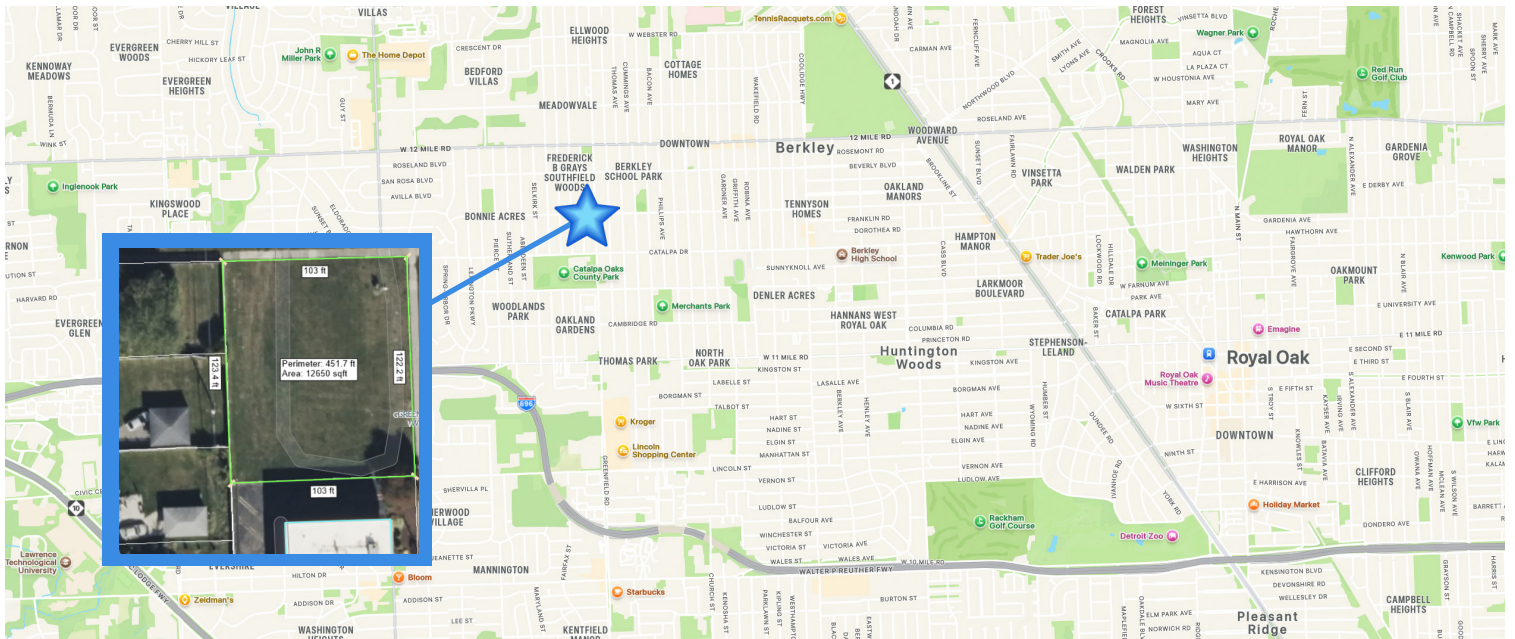


FOR SALE

.29 ACRE

IDEAL LOCATION

COMMUNITY GROWTH



28165 Greenfield, Southfield

LAND FOR SALE. Prime 0.29-acre vacant commercial parcel boasting 103x122 feet of high-visibility frontage along a high-traffic corridor near 12 Mile Road.

Call today for more information!

ADVANTAGES

- Corner lot offering excellent visibility and exposure.
- High volume of daily traffic.
- Zoned for OS (office services).

AREA

- Conveniently located with easy access to I 696 and close proximity to the Southfield Freeway and the Lodge Freeway.
- Area is seeing continued expansion driven by new development activity.

Charles Howard

LIC: #6506044836

Transwestern

(248) 821.7722

charles.howard@transwestern.com