

127

Washington St

Binghamton, New York 13901

Redevelopment Opportunity | \$700,000



127 Washington St.
Binghamton, NY 13901

For Sale

Property Features

This 10,130 SF former Salvation Army facility is conveniently located in the Central Business District of Binghamton, NY. Strategically, it is at the very center of Binghamton University student off-campus housing, downtown classrooms, the arts and entertainment. Surrounding businesses include Coffee Shops, Cafés, Restaurants, sporting venues and many retail shops. It is only a short walk to Binghamton City Hall, the Broome County Office complex and the State Office Building, as well as the County Courthouse complex. Plentiful parking is available in the adjacent and newly constructed 4 story parking structure.



Property Highlights

- + Great location for retail, student housing or entertainment venue
- + Heavy Foot Traffic
- + Downtown Binghamton University student housing
- + Adjacent public parking garage and plenty of street parking
- + Food and entertainment district

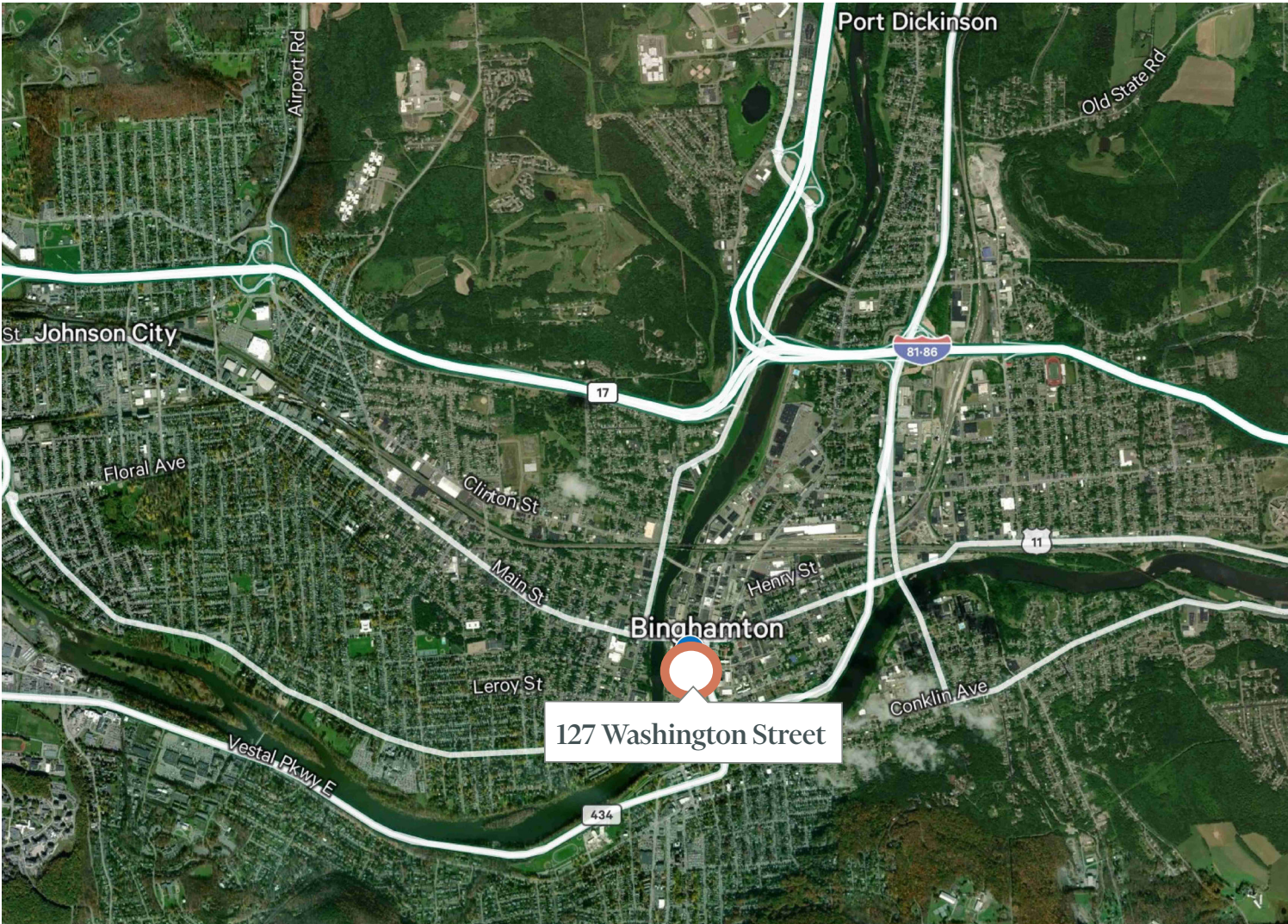


CBRE Upstate NY
500 Plum Street, Ste. 402
Syracuse, NY 13204
+1 315 422 4200
www.cbre.com/syracuse

CBRE Upstate NY
PART OF THE AFFILIATE NETWORK

127 Washington St.
Binghamton, NY 13901

For Sale



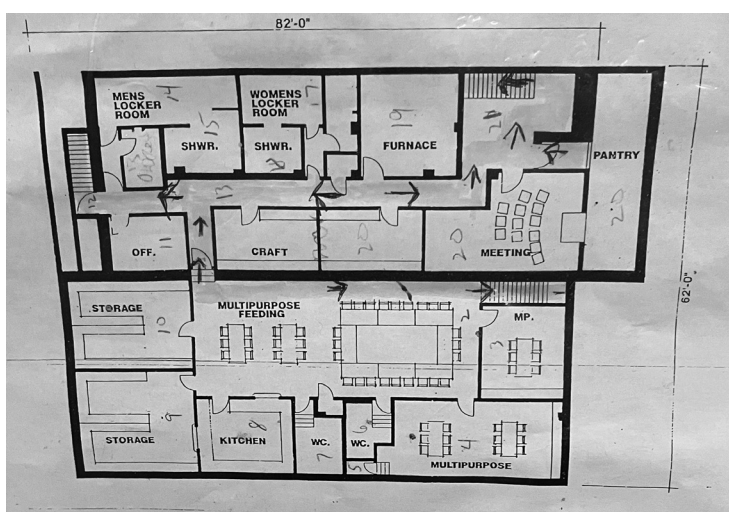
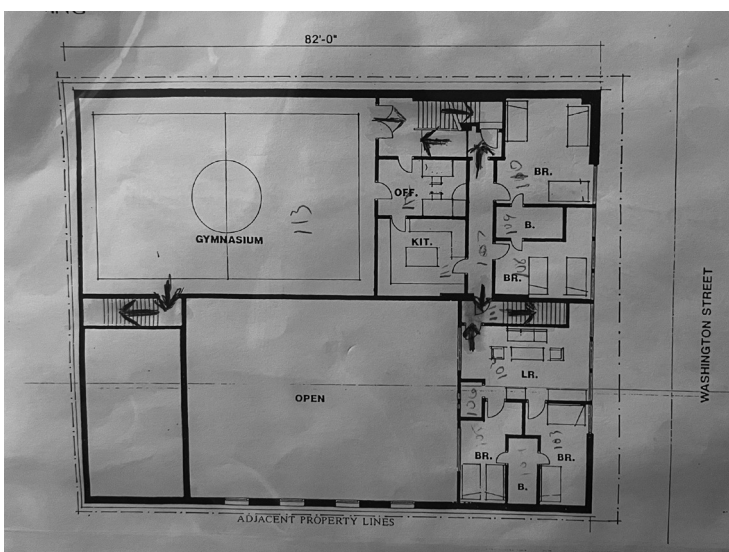
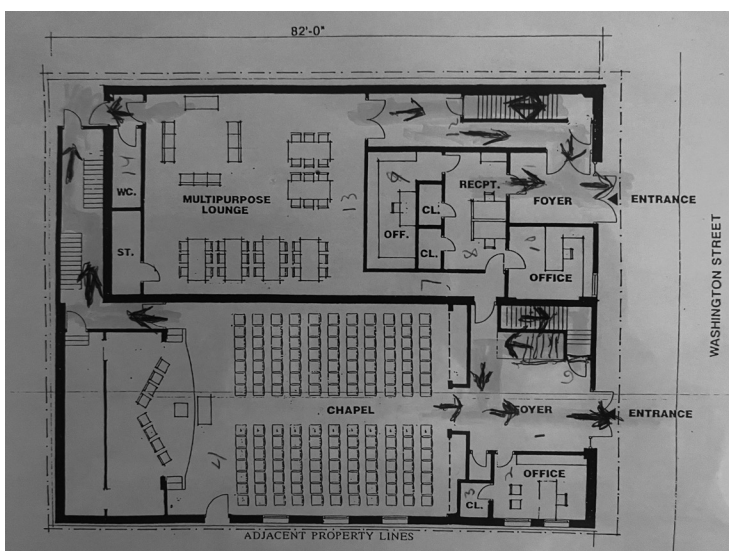
Area Demographics	1 mi.	3 mi.	5 mi.
2024 Population Estimate	287	7,806	77,110
Avg. Household Income	\$145,148	\$108,381	\$93,747

CBRE Upstate NY
500 Plum Street, Ste. 402
Syracuse, NY 13204
+1 315 422 4200
www.cbre.com/syracuse

CBRE Upstate NY
PART OF THE AFFILIATE NETWORK

127 Washington St.
Binghamton, NY 13901

For Sale



CBRE Upstate NY
500 Plum Street, Ste. 402
Syracuse, NY 13204
+1 315 422 4200
www.cbre.com/syracuse

CBRE Upstate NY
PART OF THE AFFILIATE NETWORK

Fact Sheet

APN/Parcel ID:

160.40-2-34

Listing Status:

For Sale

Sale Type:

Owner/User

Investment/Owner/User

Age:

1904 / 1959

Acres:

.128

Square Footage:

10,130

Utilities:

City Water and sewer

Natural gas heating

Price:

\$700,000

Zoning:

C2 - Downtown Business District

Property Category:

Retail

Multifamily

Special Purpose

Tenancy:

Multi or single

Construction:

Masonry

Lighting:

Fluorescent

Amenities:

Kitchen facilities

Parking:

Adjacent public parking garage

Nearest Highway and Interchange:

Route 81, 88, 86 and NY17

Contact Us

Marty Dowd

Licensed Associate Real Estate Broker

+1 315 422 4200 x316

martin.dowd@cbre-syr.com

Rick Searles

Licensed Associate Real Estate Broker

+1 607 221 5302

rick.searles@cbre-syr.com

© 2025 CBRE Upstate NY, part of the CBRE Affiliate Network. All rights reserved. This information has been obtained from sources believed reliable, but has not been verified for accuracy or completeness. You should conduct a careful, independent investigation of the property and verify all information. Any reliance on this information is solely at your own risk. CBRE Upstate NY and the CBRE Upstate NY logo are service marks of CBRE Upstate NY. All other marks displayed on this document are the property of their respective owners, and the use of such logos does not imply any affiliation with or endorsement of CBRE Upstate NY. Photos herein are the property of their respective owners. Use of these images without the express written consent of the owner is prohibited.

CBRE Upstate NY

500 Plum Street, Ste. 402

Syracuse, NY 13204

+1 315 422 4200

www.cbre.com/syracuse

CBRE Upstate NY

PART OF THE AFFILIATE NETWORK