

# 1744

# Evelyn Gandy Pkwy

Hattiesburg, MS 39401

[www.cbre.com/jackson](http://www.cbre.com/jackson)

48,000 SF Available for Lease

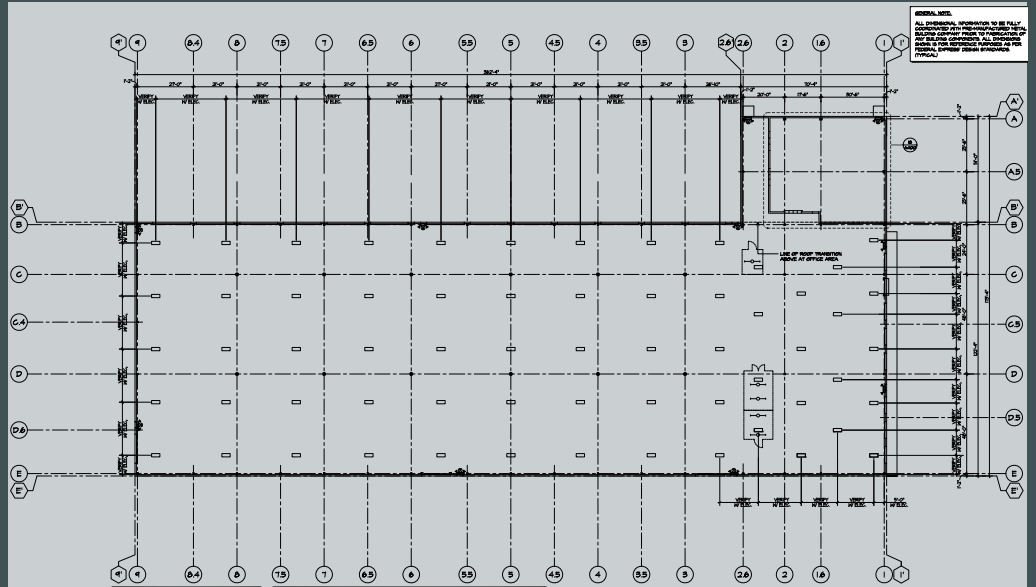


1744 Evelyn Gandy Pkwy  
Hattiesburg, MS 39401

For Lease

## Property Details

- + Available Space: 48,000 sf
- + Acres: 7.11 Acres
- + Built: 2012
- + Dock High Doors: 8
- + Grade Level Doors: 16
- + Office Space: ±3,000 sf
- + Security: Fully Fenced Lot
- + Approximately 2 miles from I-59
- + Rate: Contact Broker for pricing



## Contact Us

Grant Ridgway, SIOR  
First Vice President  
+1 601 936 7133  
[grant.ridgway@cbre.com](mailto:grant.ridgway@cbre.com)

© 2023 CBRE, Inc. All rights reserved. This information has been obtained from sources believed reliable, but has not been verified for accuracy or completeness. You should conduct a careful, independent investigation of the property and verify all information. Any reliance on this information is solely at your own risk. CBRE and the CBRE logo are service marks of CBRE, Inc. All other marks displayed on this document are the property of their respective owners, and the use of such logos does not imply any affiliation with or endorsement of CBRE. Photos herein are the property of their respective owners. Use of these images without the express written consent of the owner is prohibited.