



RETAIL SPACE FOR SALE

109 MARKET STREET
WILMINGTON, NC 28401

PROPERTY OVERVIEW

2,034 SF end-cap retail space available for sale. Currently leased by the popular Dram & Draught Bar through year 2031, the space offers high-end finishes and a thoughtfully designed layout. Its prime corner location provides excellent visibility and steady foot traffic, making it well-suited for a bar, restaurant, or retail concept.

- » 2,034 SF
- » Lounge area located on the second floor
- » Small sidewalk seating
- » Tons of natural light
- » Parking deck located beside the property
- » Sale Price: \$860,000

LOCATION DESCRIPTION

Located at the heart of downtown Wilmington at the corner of Market Street and Front Street, this space sits beside a convenient parking deck and directly across from Dean Neff's Seabird restaurant.

This prime location offers easy access to all the vibrant shops, restaurants, and attractions Wilmington has to offer!

SANDY THORPE
sthorpe@lee-associates.com
O 919.576.2500
C 910.352.6787

LANNIN BRADDOCK
lbraddock@lee-associates.com
O 910.800.2259
C 910.508.3886

LEE & ASSOCIATES
COMMERCIAL REAL ESTATE SERVICES
RALEIGH • DURHAM • WILMINGTON

PHOTOS

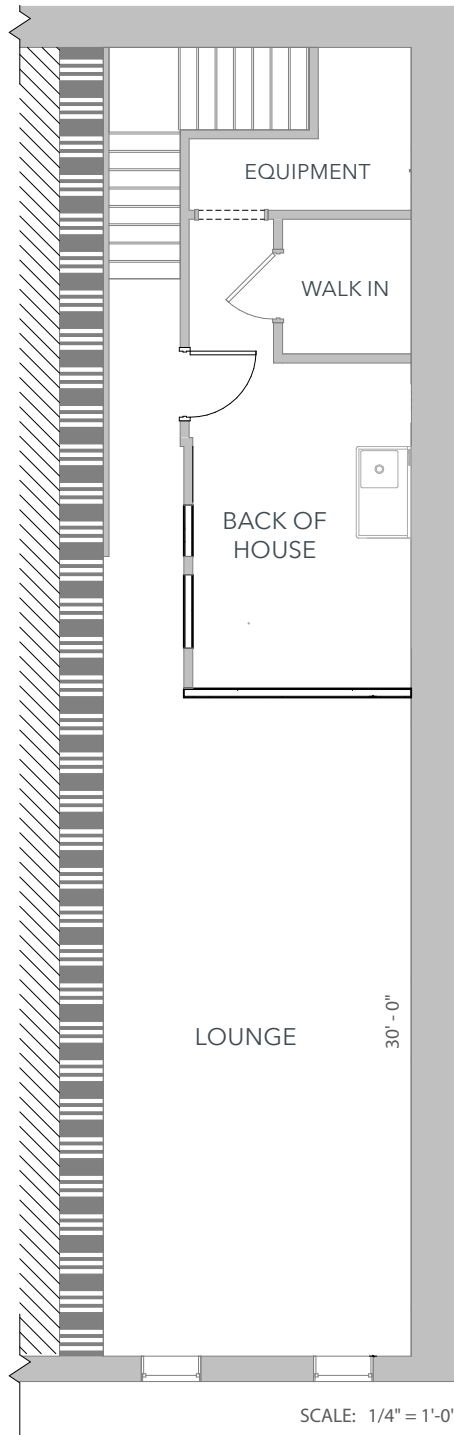
109 MARKET STREET
WILMINGTON, NC 28401



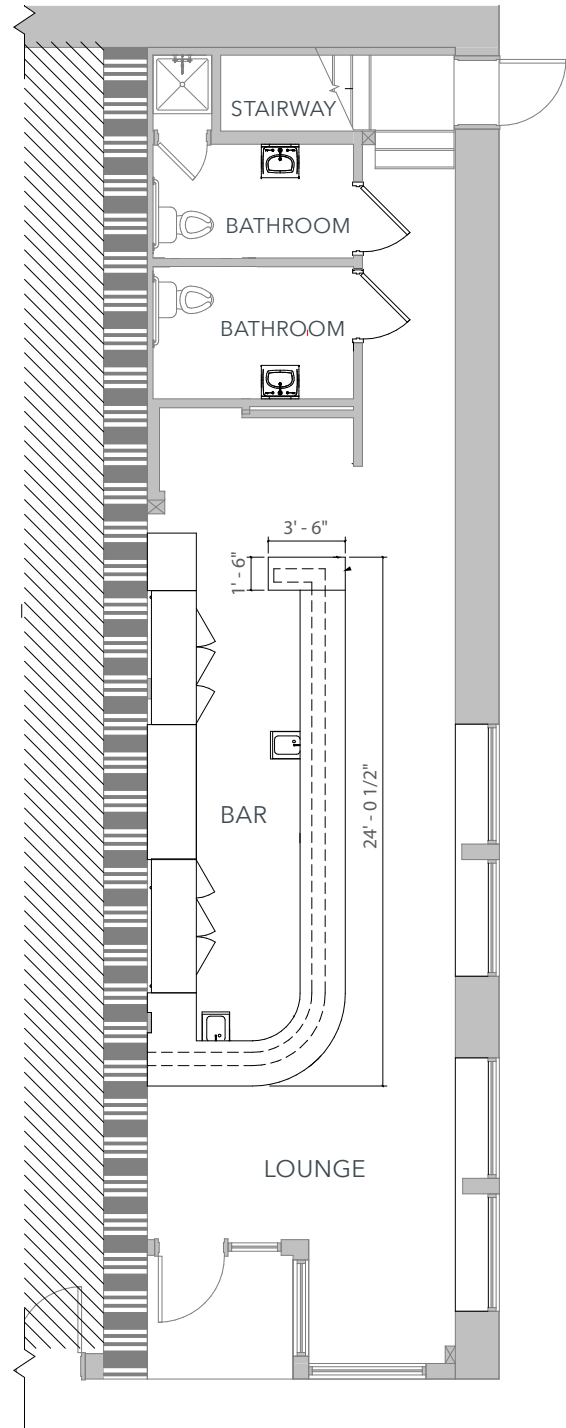
FLOOR PLAN

109 MARKET STREET
WILMINGTON, NC 28401

2ND FLOOR

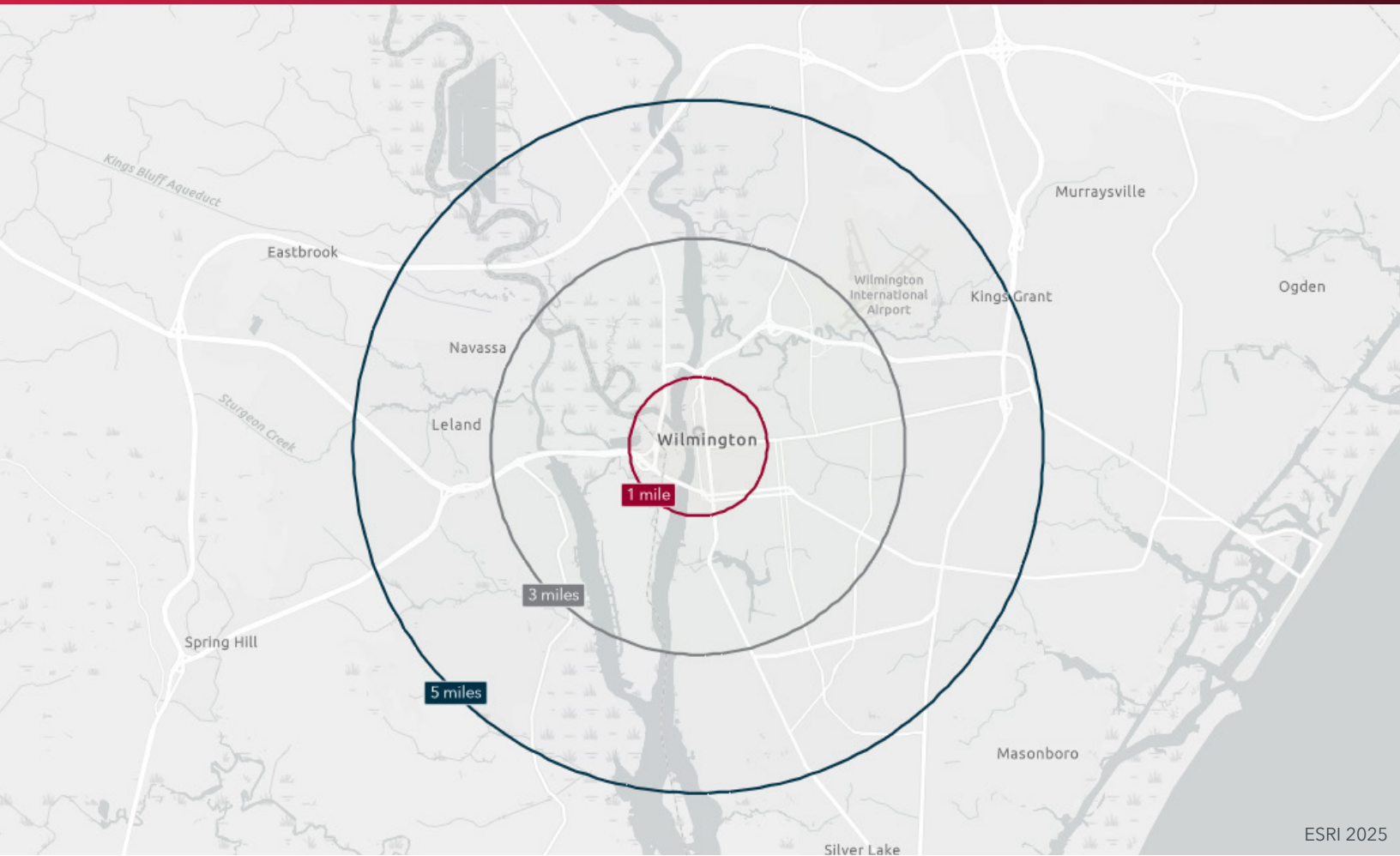


1ST FLOOR



DEMOGRAPHICS

109 MARKET STREET
WILMINGTON, NC 28401



	1 MILE	3 MILES	5 MILES
2024 Population	9,162	40,110	103,462
2024 Daytime Population	16,522	61,760	135,653
Average Home Value	\$464,211	\$440,537	\$406,162
Average Household Income	\$85,413	\$80,553	\$80,683
Median Age	38.5	38.7	37.1

SANDY THORPE
sthorpe@lee-associates.com
O 919.576.2500
C 910.352.6787

LANNIN BRADDOCK
lbraddock@lee-associates.com
O 910.800.2259
C 910.508.3886

 LEE &
ASSOCIATES
COMMERCIAL REAL ESTATE SERVICES
RALEIGH • DURHAM • WILMINGTON