



1500 E. 4th Street

Charlotte, North Carolina 28204

Available for Sale

+/- 2,558 SF Office/Retail in Midtown

Property Overview

1500 E. 4th Street

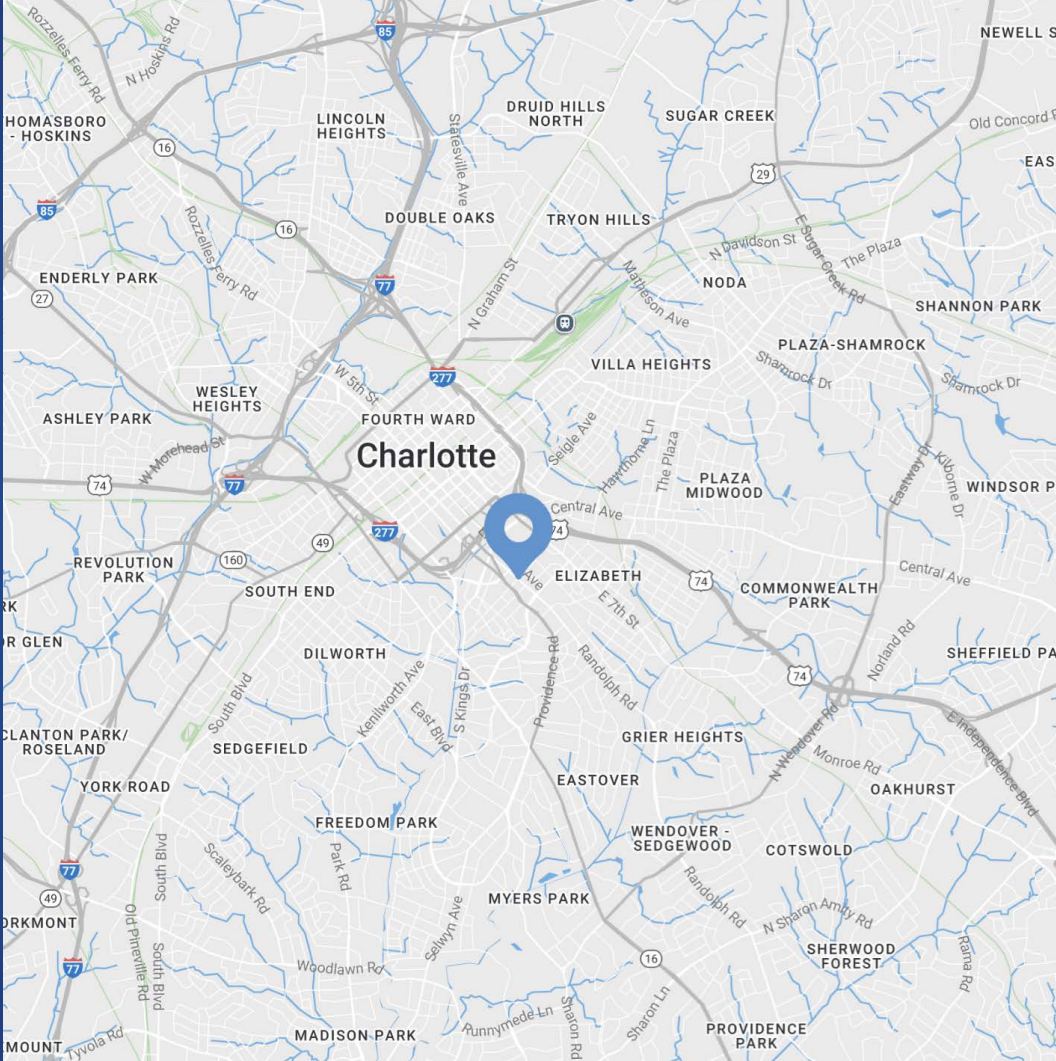
Available for Sale

Strategically positioned in Charlotte's thriving Midtown corridor, 1500 E. 4th Street offers exceptional visibility and connectivity. Located just 1.3 miles from Uptown Charlotte, this property benefits from over 21,000 vehicles per day along E. 4th Street and boasts an impressive corner lot.

Walkable to countless amenities, major hospitals, and less than 5 minutes from I-77, I-277, and Charlotte's CBD, the property offers the perfect blend of urban convenience and accessibility, making it an ideal investment for office and retail users.

Property Details

Address	1500 E. 4th Street Charlotte, NC 28204
Square Footage	+/- 2,558 SF Available for Sale
Acreage	+/- 0.264 AC
Use	Office/Retail
Zoning	GC - General Office
Parking	Newly paved parking lot
Traffic Counts	E. 4th Street 21,000 VPD
Sale Price	Call for Pricing



Demographics

RADIUS	1 MILE	3 MILE	5 MILE
2025 Population	15,731	137,525	292,542
Avg. Household Income	\$154,009	\$160,898	\$138,798
Median Household Income	\$100,196	\$103,966	\$84,436
Households	9,445	73,021	139,797
Daytime Employees	38,016	148,892	249,925

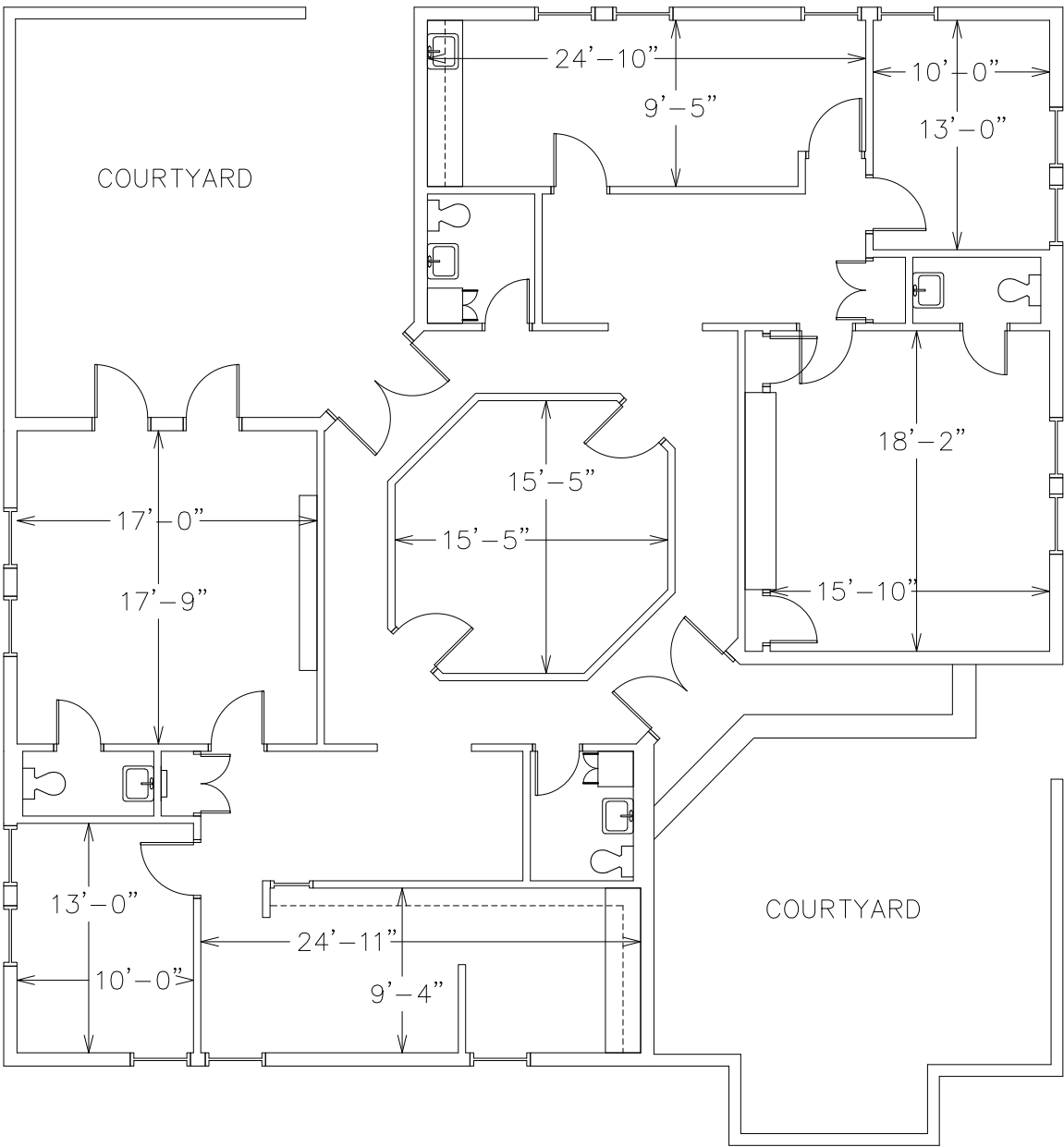
Property Photos

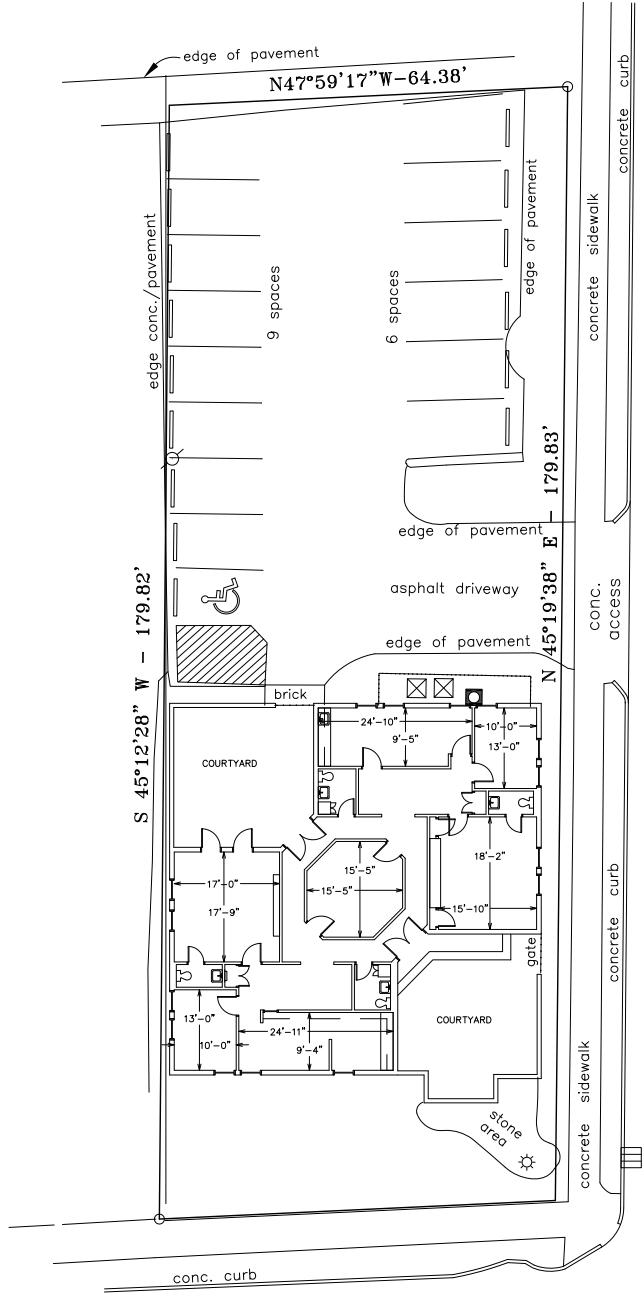


Available

+/- 2,558 SF

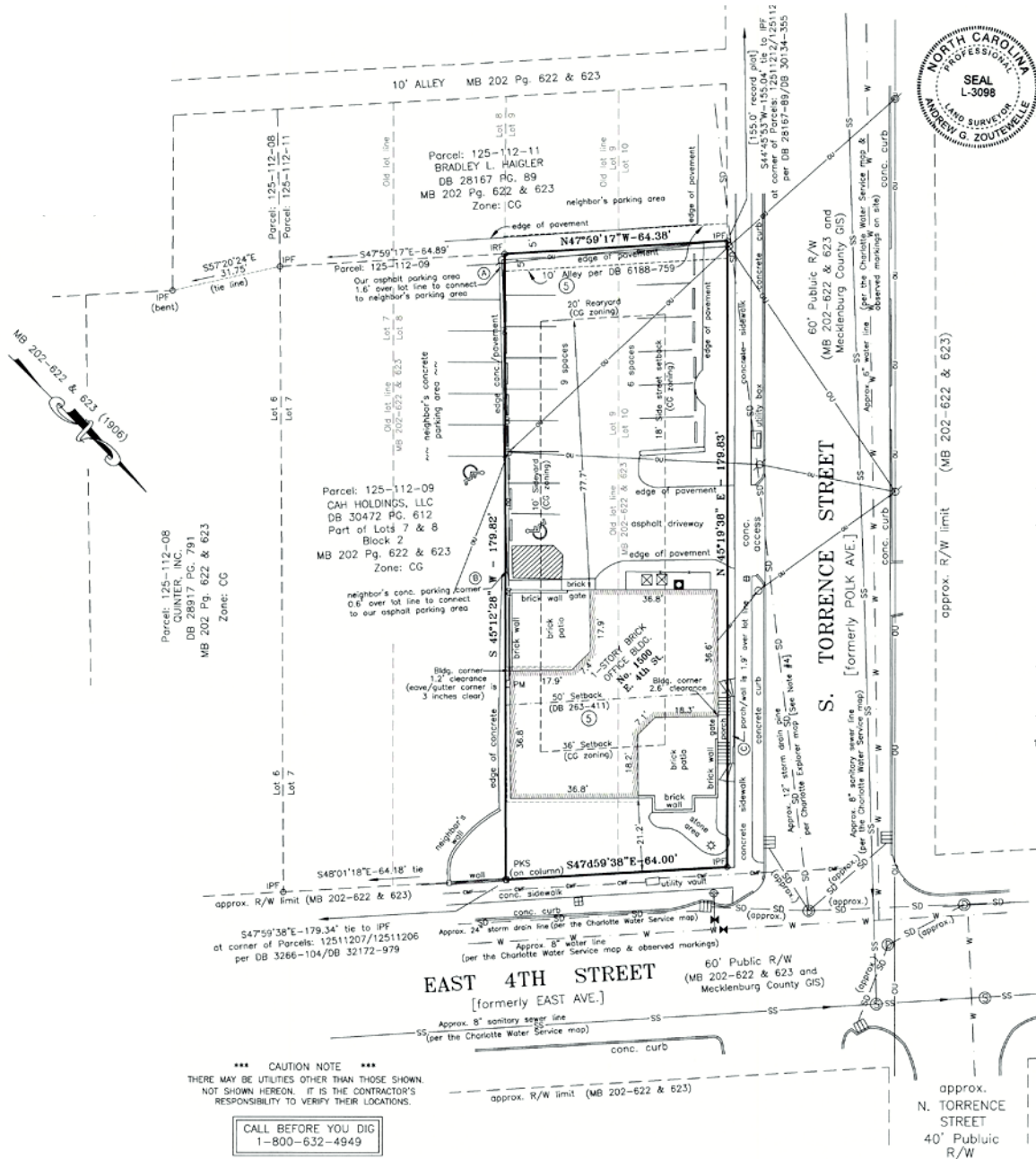
 Virtual Tour





S. TORRENCE STREET
[formerly POLK AVE.]








Midtown

Midtown Charlotte is a dynamic urban district that has transformed into one of the city's most vibrant mixed-use neighborhoods, situated between Uptown and South End along the corridor of North Tryon Street and I-277. Midtown has undergone significant redevelopment evolving into a walkable community filled with modern high-rise apartments, creative office spaces, locally-owned restaurants, craft breweries, and specialty shops. With its blend of residential living, entertainment venues, green spaces, and a growing arts scene, Midtown has become an attractive destination for young professionals and families seeking an urban lifestyle with a more relaxed, neighborhood feel than the busy downtown core.




1.3 Mi
Distance to
Uptown


148,892
Daytime Population
(3 Mile)


80
Walkability
Score


21,000
Vehicles per Day
on E 4th Street

Market Overview





Midtown

Uptown

Site

Contact for Details

Josh Beaver

(704) 373-9797

josh@thenicholscompany.com



Website

www.TheNicholsCompany.com

Phone

Office (704) 373-9797

Fax (704) 373-9798

Address

1204 Central Avenue, Suite 201

Charlotte, NC 28204

This information has been obtained from sources believed to be reliable. While we do not doubt its accuracy, we have not verified it and make no guarantee, warranty or representation to independently confirm its accuracy and completeness.