

**MEDICAL OFFICE
SUBLEASE
AVAILABLE**

**5530 WISCONSIN AVE,
SUITE 711, CHEVY
CHASE, MD 20815**

Chevy Chase Building



AVAILABLE TO PROSPECTIVE TENANTS

- 692 SF Built-Out Medical Office - Ready for immediate occupancy
- Sublease with option for a direct deal
- Located in the Heart of Chevy Chase, MD
- Professional Medical Building with Elevator Access
- Ideal for Specialists or Private Practice Use
- Rate Negotiable

Built-Out Medical Suite Available for Sublease

**692 SF Medical Office - Sublease
Through November 2026**



703-421-3310
45449 E SEVERN WAY, SUITE 155
STERLING, VA 20166



**ANTONIS ALEXANDRIS
PRINCIPAL BROKER**

240-997-6199

ANTONIS@ALEXANDRIANPARTNERS.COM

**A PRIME MEDICAL
SUITE IN THE HEART
OF CHEVY CHASE
BUILDING HIGHLIGHTS**



**STEPS FROM HIGH-
END RETAIL & DINING**



**ESTABLISHED
MEDICAL BUILDING**



**MOVE-IN READY MEDICAL
BUILD-OUT**



**ELEVATOR ACCESS
TO SUITE**



**CLOSE TO METRO & MAJOR
ROUTES**

**5530 WISCONSIN AVE, SUITE
711**

**LOCATED IN CHEVY CHASE, MD
SUBLEASE AVAILABLE**

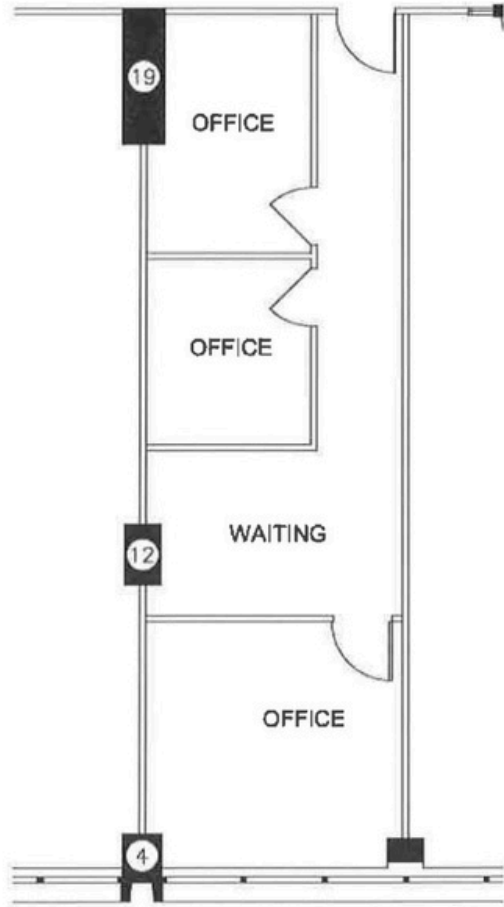
Built-Out Medical Suite

692 SF | Rate Negotiable

Term Through: November 30, 2026



EXHIBIT A
SCHEMATIC OF SPACE



SUITE #711

FLOOR PLAN SUITE 711

- 692 RSF
- Built-out for medical use
- Reception & waiting area
- Private treatment/exam rooms
- In-suite plumbing
- Efficient, functional layout
- Available through November 30, 2026

IDEAL FOR
SPECIALISTS,

SMALL
PRACTICES, OR

SATELLITE
OFFICES LOOKING
FOR A TURNKEY
CHEVY CHASE
LOCATION.

Existing layout shown. Additional test fits available upon request.

