

SALE

2000 HALF DAY ROAD

2000 Half Day Road Highland Park, IL 60035



OFFERING SUMMARY

Sale Price	\$2,999,000
Residence	4,800 SF
Barn Size	3,500 SF
Lot Size	19.66 Acres
Zoning	R3

PROPERTY HIGHLIGHTS

Superior Chicago North Shore Suburban 4-Bedroom & 4-Bathroom Brick Ranch Offering Master Bedroom & In-Law Suite, Study & Den Renovated In 2021, That Overlooks A Serene Pond With Parking Pad. This One-of-Kind Property Includes A Separate Barn That Has Eight Stalls & Apartment. Prominent 20+/- Acre Site That Can Be Subdivided For Additional Future Homes Conveniently Set Between Highways 41 & 94. Uniquely Adjacent To Lake County's Forest Preserves Prairie Wolf & Walking Distance From Retail Corners With Walgreen's, Mariano's, Restaurants & Services. 2000 Half Day Road Can Be Sold With 2056 Half Day Road In Highland Park IL As 35+/- Acres Priced At \$4,300,000.

2023 Real Estate Taxes \$16,100+/- With Tax-Pins: 161740036, 161740037, 161740038, 1617403006 & 1617400048.

Sheryl Fisher

Commercial Broker

(312)988-9070

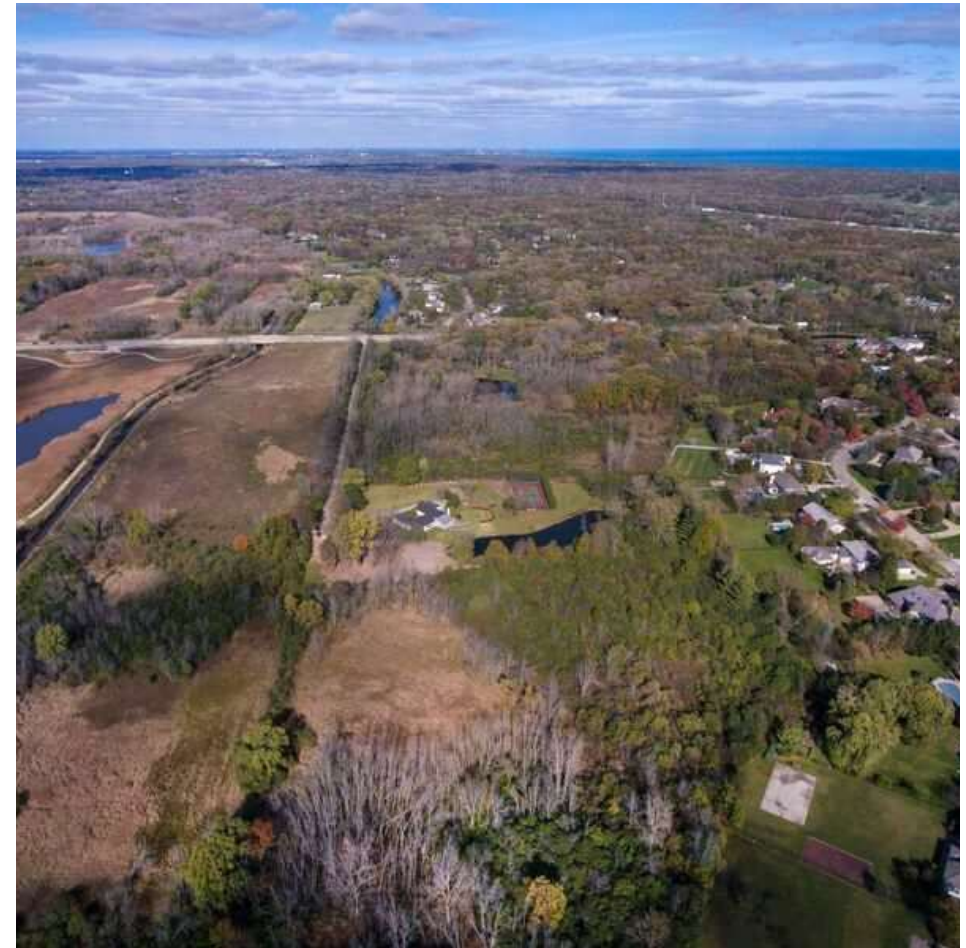
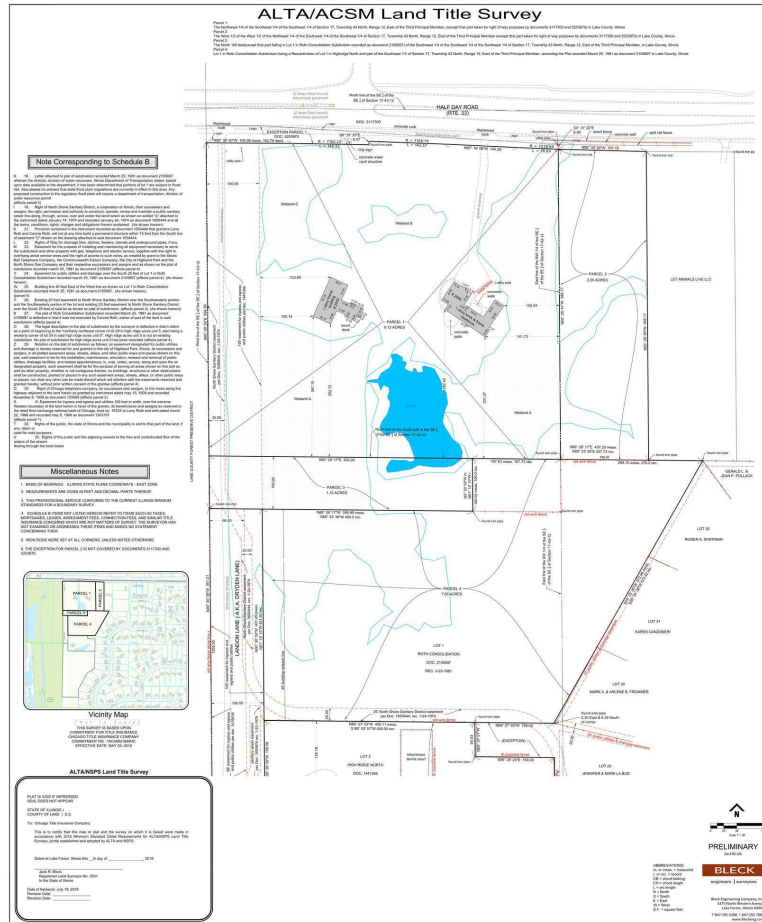
sherylfisher@cbcncr.com



COLDWELL BANKER
COMMERCIAL
REALTY

SURVEY

2000 HALF DAY ROAD
2000 Half Day Road Highland Park, IL 60035



Sheryl Fisher
Commercial Broker
(312)988-9070
sherylfisher@cbcncrt.com

