



Brickell Key

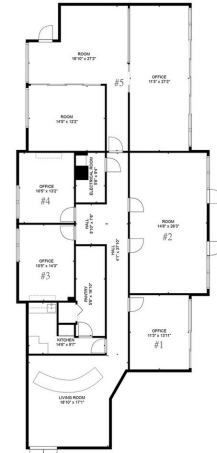
305-979-3737

\$6,700 per month

>Video Available<

Exclusive and Private Brickell Key. This office is unique by its location and with high ceilings making it very welcoming and perfect for business professionals regardless the size of your business. It includes 8 parking spots an no additional cost. Building with Elegant lobby, kitchen and 5 to 6 offices around tropical landscaping throughout the grounds. Property management team is located on-site with fast personalized solutions....

- 8 parkings spots INCLUDED at no additional cost
- Offering Lobby with large TV showing the companies, Commune Kitchen and Storage.
- Walking distance restaurants
- Prime Location
- Perfect office for Media compay, Law firm, Real Estate, Import / Export etc..
- Exclusive Private quite office



305-979-3737

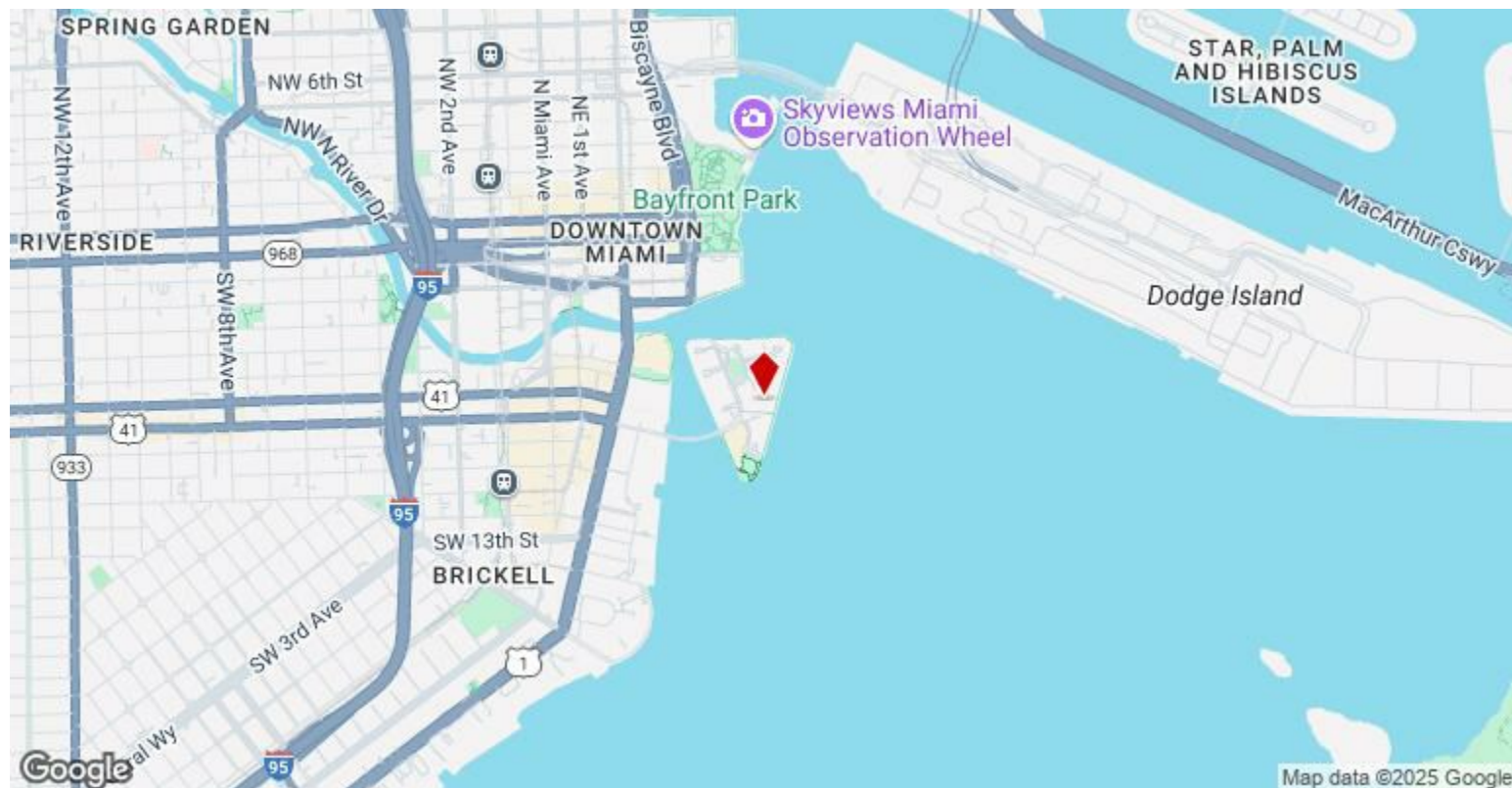
TOTAL: 2345 sq. ft.
FLOOR 1: 2345 sq. ft.
EXCLUDED AREAS: ELECTRICAL ROOM: 51 sq. ft.

Rental Rate:	\$6,700 per month
Property Type:	Exclusive Quite Office
Property Subtype:	Condo Office
Apartment Style:	Low Rise
Year Built:	1982
Walk Score ®:	84 (Walkable)
Transit Score ®:	88 (Excellent Transit)
Rental Rate Mo:	\$34.79 /SF/MO



David Concheso
ISG | International Sales Group
2875 NE 191st St, Suite 200, Aventura, FL 33180
dc@dcvisual.com
(305) 979-3737





520 Brickell Key Dr, Miami, FL 33131

Exclusive and Private Brickell Key. This office is unique by its location and with high ceilings making it very welcoming and perfect for business professionals regardless the size of your business. It includes 8 parking spots an no additional cost. Building with Elegant lobby, kitchen and 5 to 6 offices around tropical landscaping throughout the grounds. Property management team is located on-site with fast personalized solutions.

3rd Floor Ste O-305

Space Available	2,345 SF
Rental Rate	\$6,700 per month
Date Available	Now
Service Type	Office
Built Out As	Standard Office
Space Type	Relet
Space Use	Office
Lease Term	Negotiable

With furniture! Full floor suite available totaling 2,345 SF with all 5 to 6 private offices with kitchen impressive lobby and kitchen. Very Exclusive Brickell Key Office! . This office is unique by its location and with high ceilings making it very welcoming and perfect for business professionals regardless the size of your business. It includes 8 parking spaces with the option of more spaces available. Building with Elegant lobby and common areas, as well as tropical landscaping throughout the grounds. Property management team is located on-site with fast personalized solutions.

Property Photos



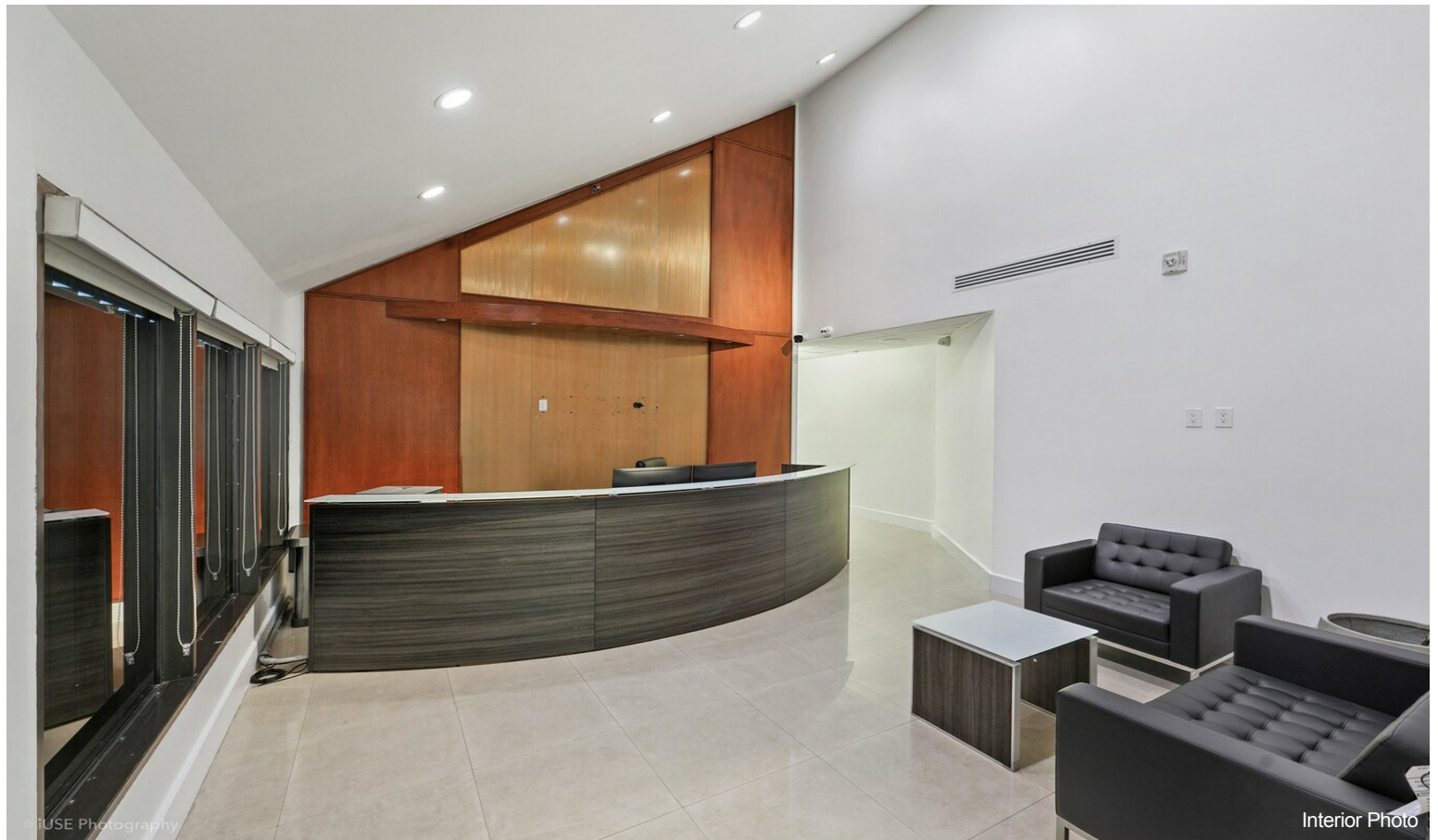
Property Photos



Property Photos



Property Photos



Property Photos



Property Photos

