



For Lease

Class A space in great location

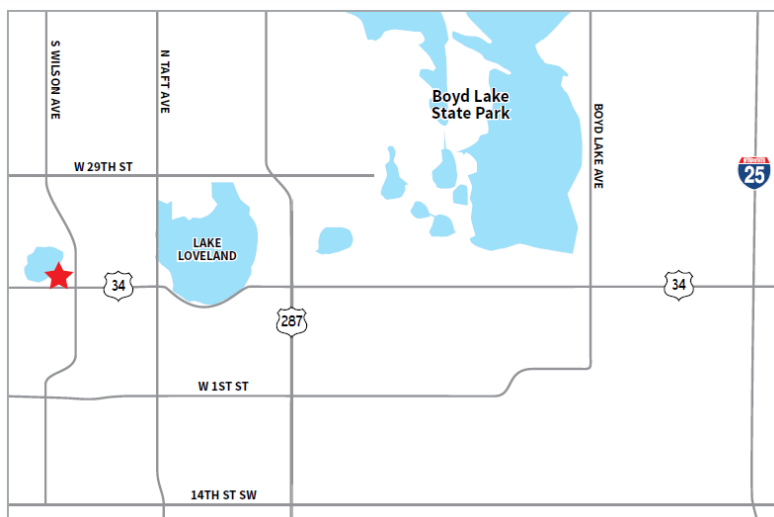
- Ideal Central Loveland location
- Lake views
- High image building
- Ample parking
- High-end finishes

**2695 W. Eisenhower Blvd.
Loveland, CO**

David Shirazi
+1 303 390 5247
david.shirazi@am.jll.com

Tammy Baldwin
+1 720 418 8027
tammy.baldwin@am.jll.com

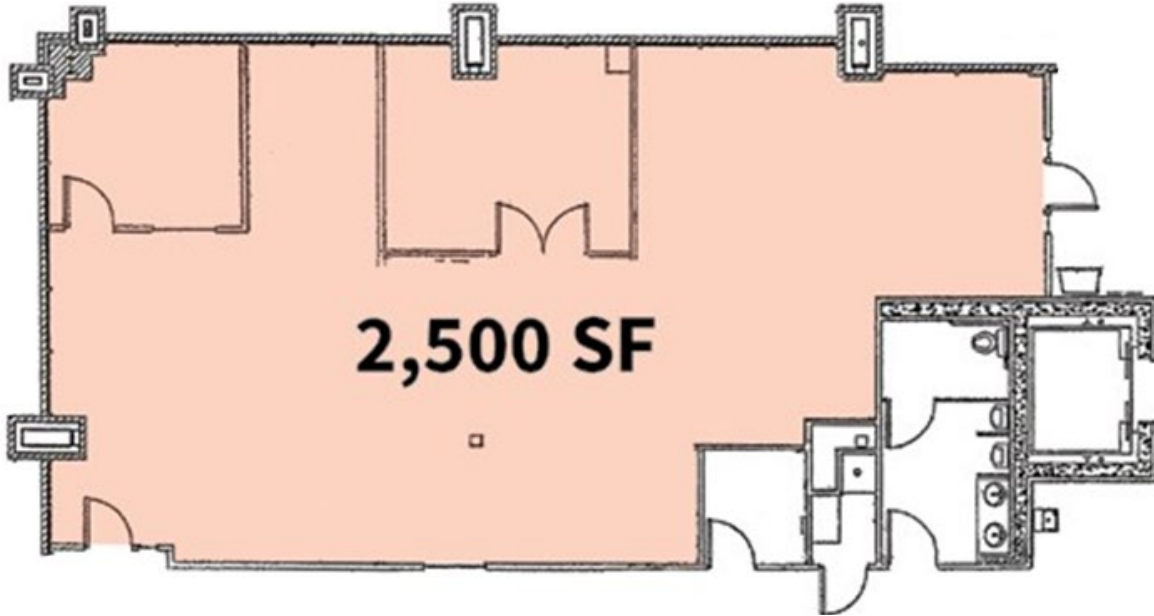
jll.com/denver



Floorplan

1st Floor

\$14.00/SF NNN
2,500 SF available



Lower Level

\$7.00/SF NNN
6,500 SF available

