

FOR SALE

18 AC DEVELOPMENT SITE (44 AC TOTAL)

0 James Madison Hwy | Palmyra, VA 22963



S.L. NUSBAUM
REALTY CO.



DAVID T. KALMAN

Senior Vice President

O. 804.539.8404

dkalman@slnusbaum.com

NATHAN SHOR

Senior Vice President | Partner

O. 804.944.2399

C. 804.539.7404

nshor@slnusbaum.com

PROUD PARTNER
XTEAM
RETAIL ADVISORS

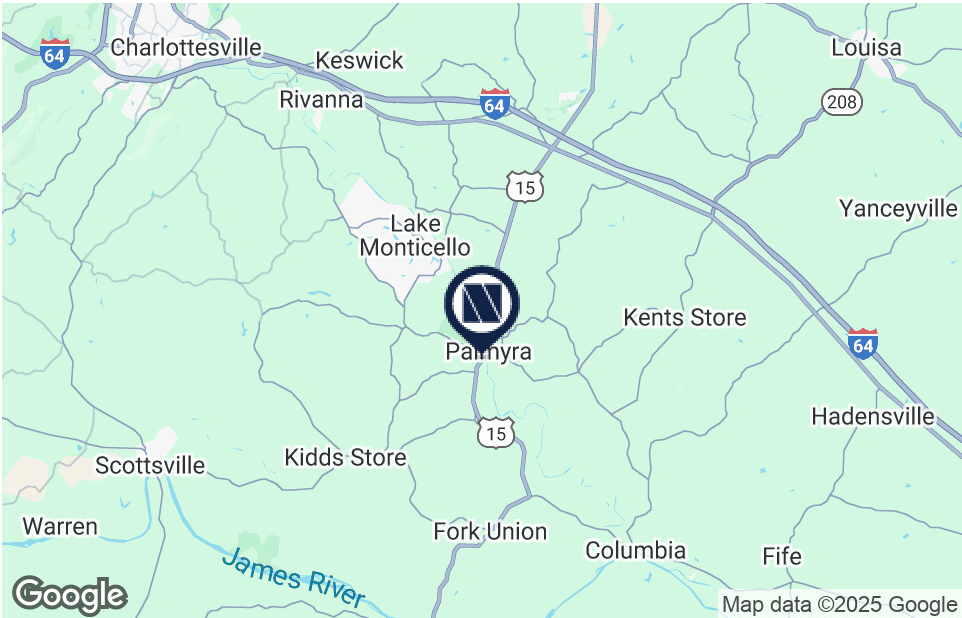
S.L. NUSBAUM REALTY CO. | 7200 GLEN FOREST DRIVE, SUITE 300, RICHMOND, VA 23226 | 804.320.7600 | SLNUSBAUM.COM

PROPERTY SUMMARY

18 AC DEVELOPMENT SITE (44 AC TOTAL)
0 James Madison Hwy | Palmyra, VA 22963



S.L. NUSBAUM
REALTY CO.



OFFERING SUMMARY

Sale Price:	\$1,800,000
Lot Size:	18-AC Development Site ±44 Acres Total
Zoning:	±18 AC B-1/Balance is A-1

DEMOGRAPHICS	5 MILES	7 MILES	10 MILES
Total Population	8,928	20,068	31,150
Total Households	3,586	7,954	11,820
Average HH Income	\$129,480	\$119,155	\$120,250

PROPERTY OVERVIEW

18-Acre Retail/Commercial Development Parcel with 26 acres of additional wetlands

PROPERTY HIGHLIGHTS

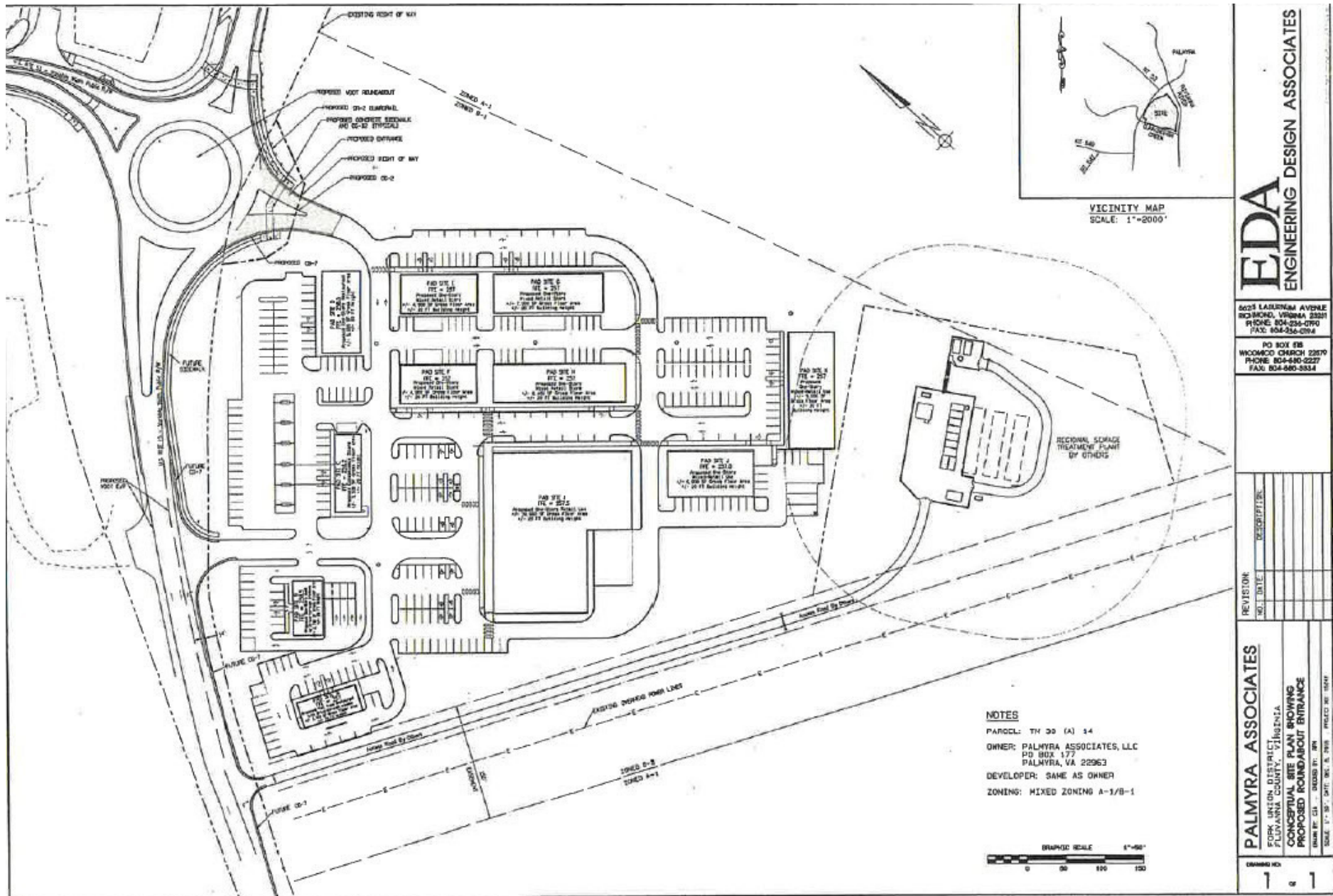
- Great retail location with access from the roundabout at James Madison Hwy (Rt 15) and Thomas Jefferson Pkwy (Rt 58)
- Approximately 0.4 miles of frontage along the Rivanna River
- <9 miles south of Interstate 64 at Zion Crossroads Exit #136
- Well Water & County Sewer System
- James Madison Hwy/US Rt 50 - 6,600 VPD
- Thomas Jefferson Pkwy - 4,500 VPD

0 James Madison Hwy | Palmyra, VA 22963



S.L. NUSBAUM

REALTY CO.



SURVEY

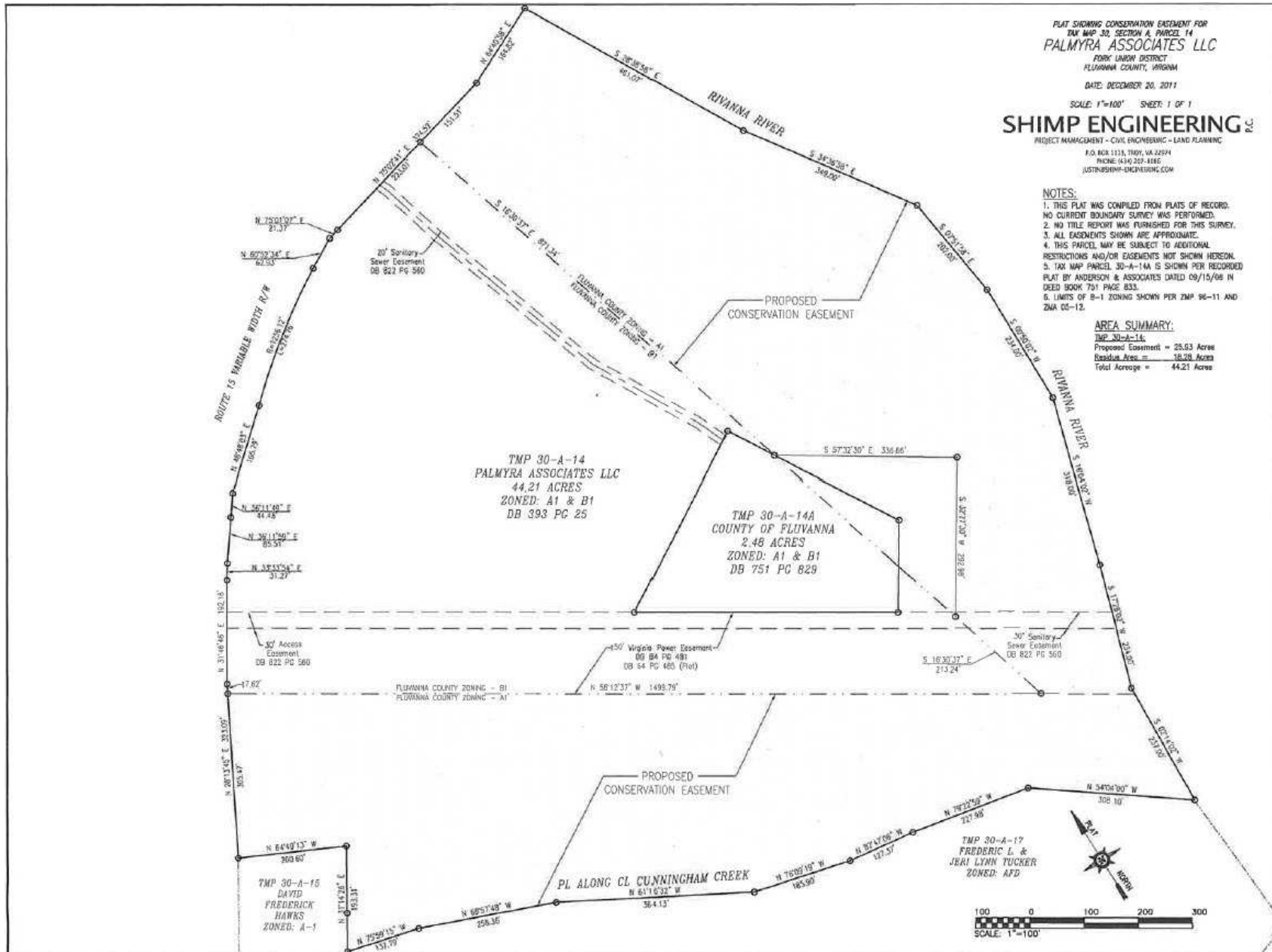
18 AC DEVELOPMENT SITE (44 AC TOTAL)

0 James Madison Hwy | Palmyra, VA 22963



S.L. NUSBAUM

REALTY CO.



CONTACT INFORMATION

18 AC DEVELOPMENT SITE (44 AC TOTAL)

0 James Madison Hwy | Palmyra, VA 22963



S.L. NUSBAUM

REALTY CO.

DAVID T. KALMAN

Senior Vice President

O. 804.539.8404

dkalman@slnusbaum.com

NATHAN SHOR

Senior Vice President | Partner

C. 804.539.7404

O. 804.944.2399

nshor@slnusbaum.com



COMMITMENT. INTEGRITY. EXCELLENCE. SINCE 1906.

Serving the Southeast and Mid-Atlantic region for well over a century, S.L. Nusbaum Realty Co. continues to provide a comprehensive experience for our clients and customers in all aspects of the multifamily and commercial real estate industry.

CLICK HERE TO LEARN MORE

PROUD PARTNER

XTEAM

RETAIL ADVISORS

CLICK HERE TO LEARN MORE

DISCLAIMER:

No warranty or representation, expressed or implied, is made to the accuracy or completeness of the information contained herein, and same is submitted subject to errors, omissions, change of price, rental or other conditions, withdrawal without notice, and to any special listing conditions imposed by the property owner(s). As applicable, we make no representation as to the condition of the property (or properties) in question or the property's (or properties') compliance with applicable laws, regulations, and codes.