

© SafeGraph, GeoTechnologies, Inc, METLINASA, USGS, EPA, NPS, US Census Bureau, USDA, USFWS

15440 Cortez Blvd

15440 Cortez Blvd, Brooksville, FL 34613



CENTURY 21 / ALLIANCE



April Cannon

Century 21 Alliance Realty Group
7615 Horse Lake Rd, Brooksville, FL 34601
april.bville@gmail.com
(352) 686-0000

15440 Cortez Blvd

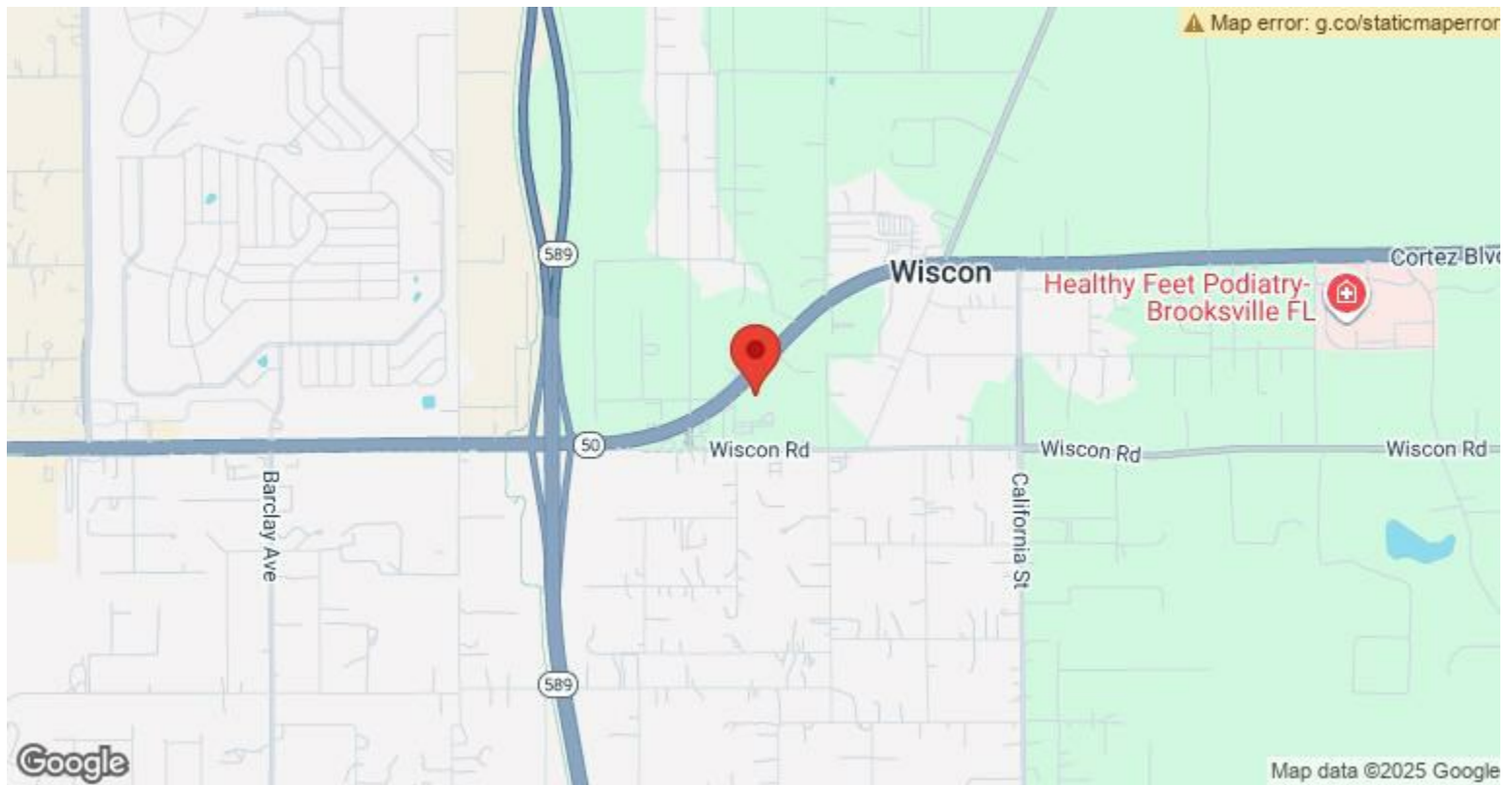
\$4,250,000

LOCATION, LOCATION, LOCATION!!! Excellent Visibility! This 11 acre tract has 375' of road frontage on Cortez Blvd! Located directly across the street from Prime 88. Endless possibilities of what you can do here! Being only about 1/2 mile from the Suncoast Parkway makes for an easy commute to Tampa. Water and sewer are available. 3 different access roads, Cortez Blvd, Arizona St and Wiscon. Close to all ammenities, including shopping, fine dining, hospitals, doctors and outdoor adventures!...

- Excellent Visibility
- 375' of road frontage on SR 50
- Water and Sewer available
- 11 acres
- Access from 3 roads



Price:	\$4,250,000
Property Type:	Land
Property Subtype:	Commercial
Proposed Use:	Commercial
Sale Type:	Investment or Owner User
Total Lot Size:	9.97 AC
No. Lots:	1
Zoning Description:	C2
APN / Parcel ID:	R26 222 18 3190 0000 0430



15440 Cortez Blvd, Brooksville, FL 34613

LOCATION, LOCATION, LOCATION!!! Excellent Visibility! This 11 acre tract has 375' of road frontage on Cortez Blvd! Located directly across the street from Prime 88. Endless possibilities of what you can do here! Being only about 1/2 mile from the Suncoast Parkway makes for an easy commute to Tampa. Water and sewer are available. 3 different access roads, Cortez Blvd, Arizona St and Wiscon. Close to all amenities, including shopping, fine dining, hospitals, doctors and outdoor adventures!

Property Photos



Property Photos



Property Photos



Property Photos



Property Photos



Property Photos



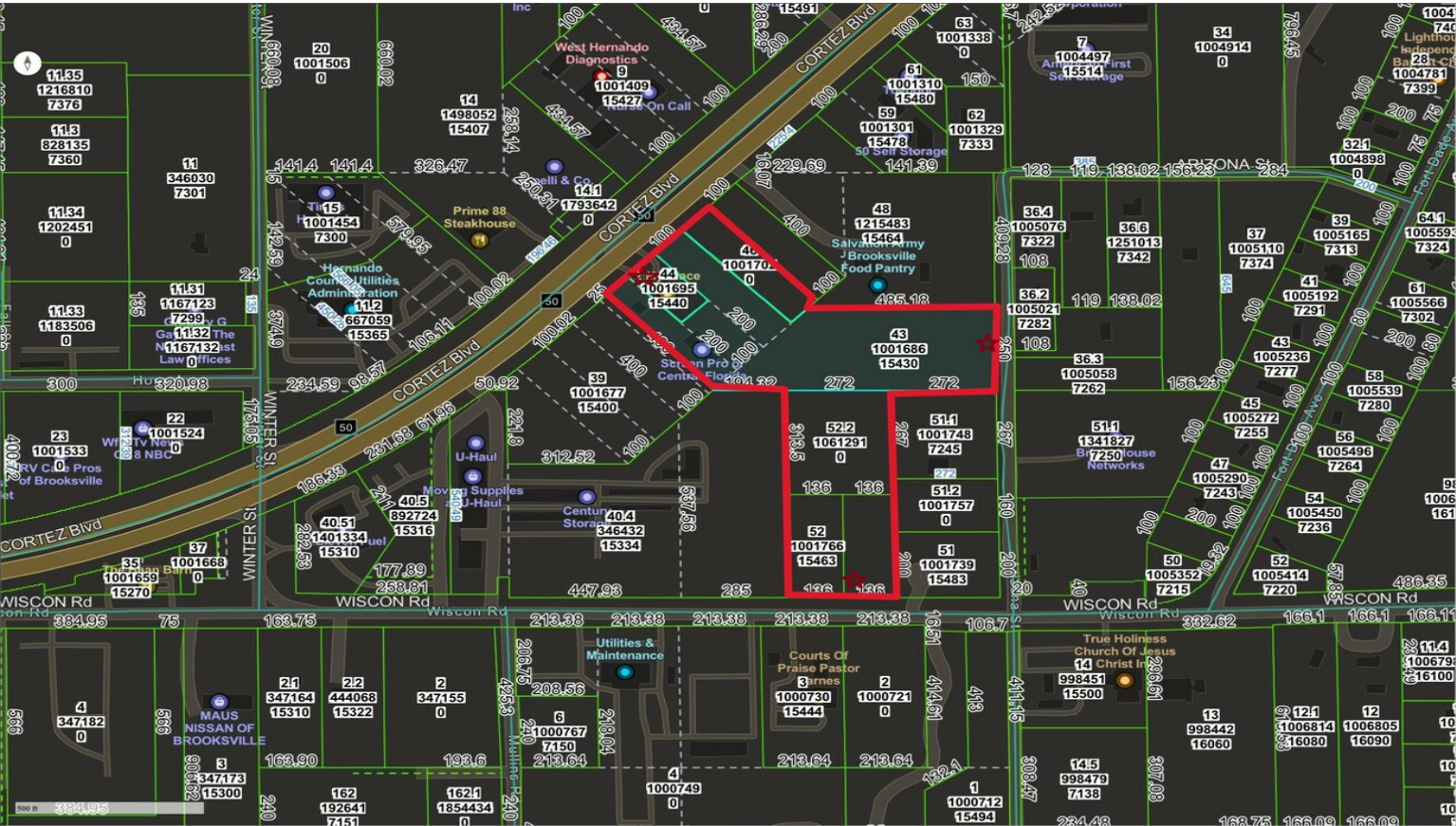
Property Photos



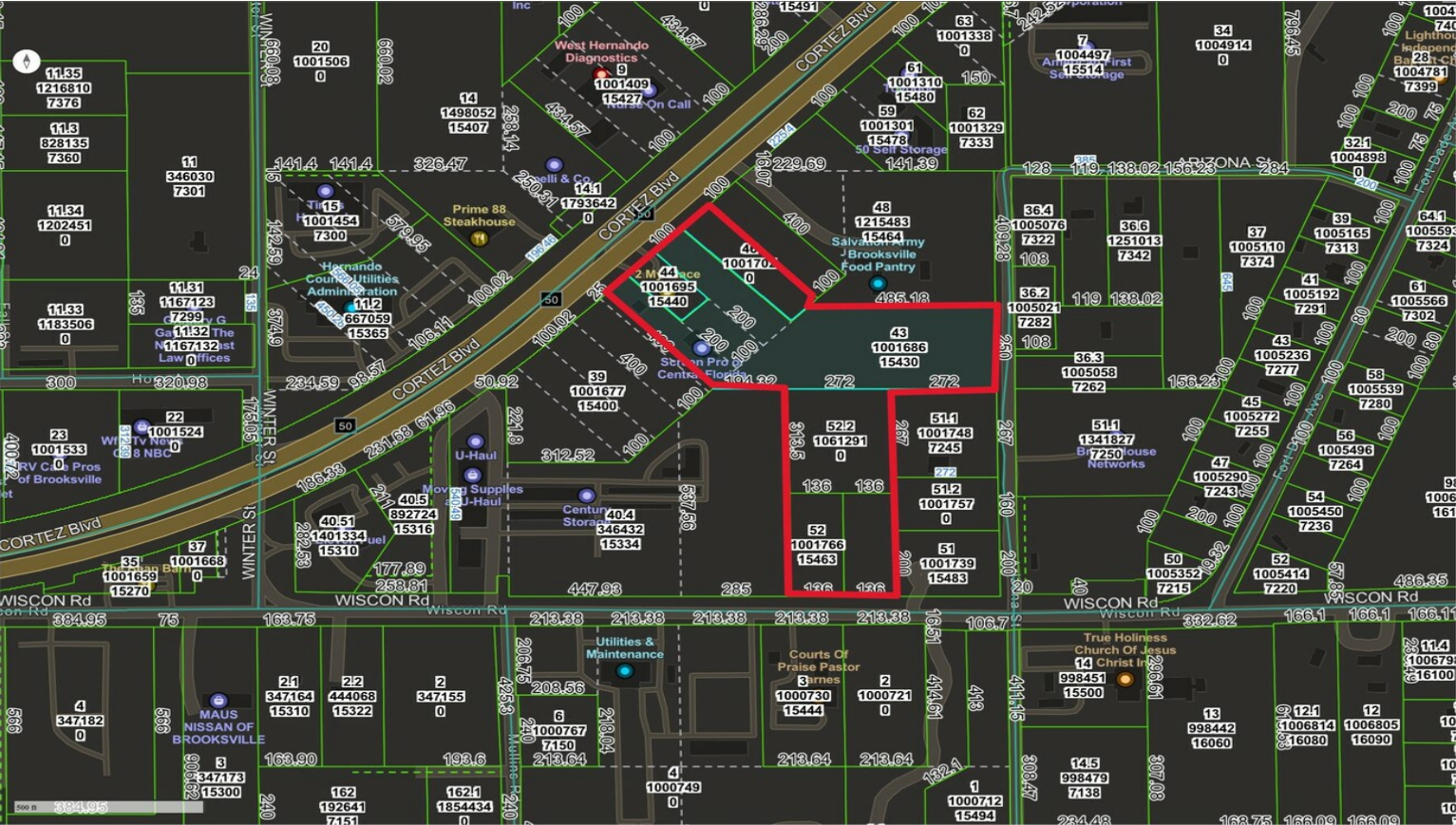
Property Photos



Property Photos



Property Photos



Esri Community Maps Contributors, FDEP, © OpenStreetMap, Microsoft, Esri, TomTom, Garmin, SafeGraph, GeoTechnologies, Inc, MET/NASA, USGS, EPA, NPS, US Census Bureau, USDA, USFWS



Building Photo