

NOW LEASING



1776 N. Meridian Street



Located in the heart of the Indy Health
District.



Your Next Office
Starts Here

STENZ

An Address with Possibility.

Located in the heart of the Indy Health District, 1776 N Meridian Street presents up to 12,000 square feet of premier, flexible space - clear, open, and ready to be brought to life. This is more than a floor plate; it is a platform for innovation, purpose, and growth, positioned within one of Indianapolis' most transformative districts.

**Where Business Meets
Productivity**



STENZ

Location. Access. Momentum.



Indy Health District Anchored

Steps from IU Health's Mosaic Center and a short walk from the \$4 billion expansion of IU Health's medical campus.

Residential Energy at your Doorstep

New apartment communities like Wesley Place and The Stella add density, walkability, and demand, fueling a live-work-play ecosystem in the District.

Academic Powerhouse

The IU School of Medicine, one of the largest medical schools in the country, adds unparalleled synergy for training, research, and talent attraction.

Unmatched connectivity

Immediate interstate access plus Red and Purple Line BRT service brings seamless access for employees, clients, and partners across the region.



STENZ



The Indy Health District Advantage

The Indy Health District is quickly becoming the city's next great hub of energy and innovation. It is a place where healthcare, education, housing, and commerce are converging to create a district that is more than the sum of its parts. Locating here means aligning with billions of dollars of reinvestment and positioning your organization where Indianapolis' future is being built.



STENZ

Flexible Uses, Unlimited Potential

1776 N Meridian's 12,000 square feet is designed for adaptability and can support a wide range of users:

Office Headquarters

Establish your presence with visibility and connectivity in the heart of the Indy Health District.

Non-Profit Hub

Create a mission-centered anchor that amplifies community impact in an environment designed for collaboration.

Innovation and Training Center

Tap into IU Health, the Mosaic Center, and IU School of Medicine to unlock unprecedented opportunities for growth and partnership.

Community Asset

Activate the space in a way that strengthens the District's fabric and serves as a catalyst for continued vitality.



STENZ

Property Features



Secured Building with
24/7 key code access



Surface Level Parking



Convenient Public
Transit Access

STENZ

Second Floor Annex

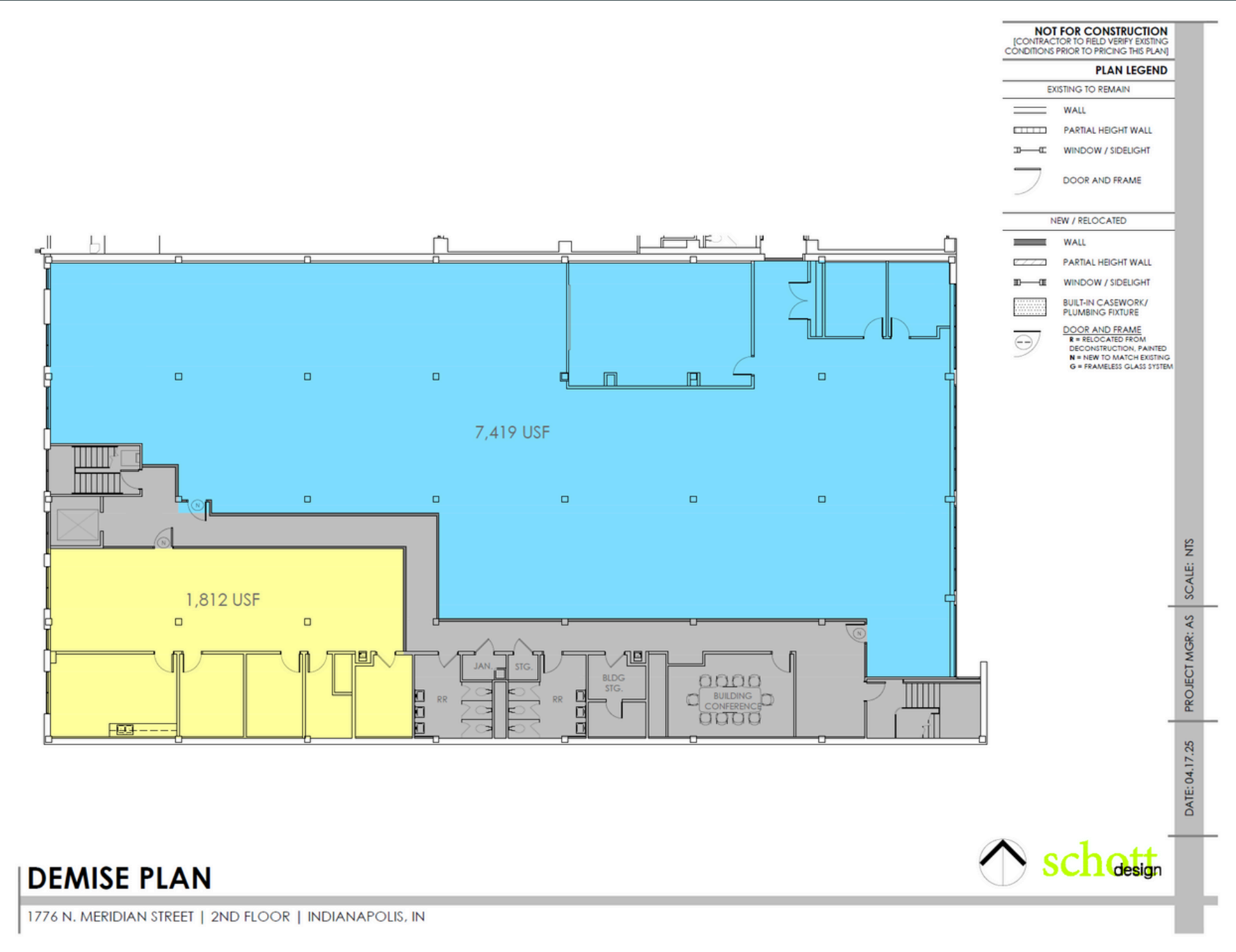
Between 2,000 and 12,000 sf of available office space



STENZ

Floor Plan

Between 2,000 and 12,000 sf
of available office space



STENZ

Why 1776. Why Now.

Space like this — 12,000 square feet, clear and flexible, positioned within the Indy Health District — is rare. It offers forward-looking organizations the chance to not just lease space, but to plant a flag in the heart of Indianapolis' transformation.

This is not simply about square footage. It is about being part of a district that is reimagining the future of health, education, and community for decades to come.





STENZ

Contact Us

Ready to find your
ideal office space?

- 317.443.3812
- rcorr@stenzcorp.com
- 1411 Roosevelt Ave. Ste 104
Indianapolis, IN 46201

