

The City of Kingman has maintained local Opportunity/Enterprise Zone designations for the purpose of economic development and incentives.

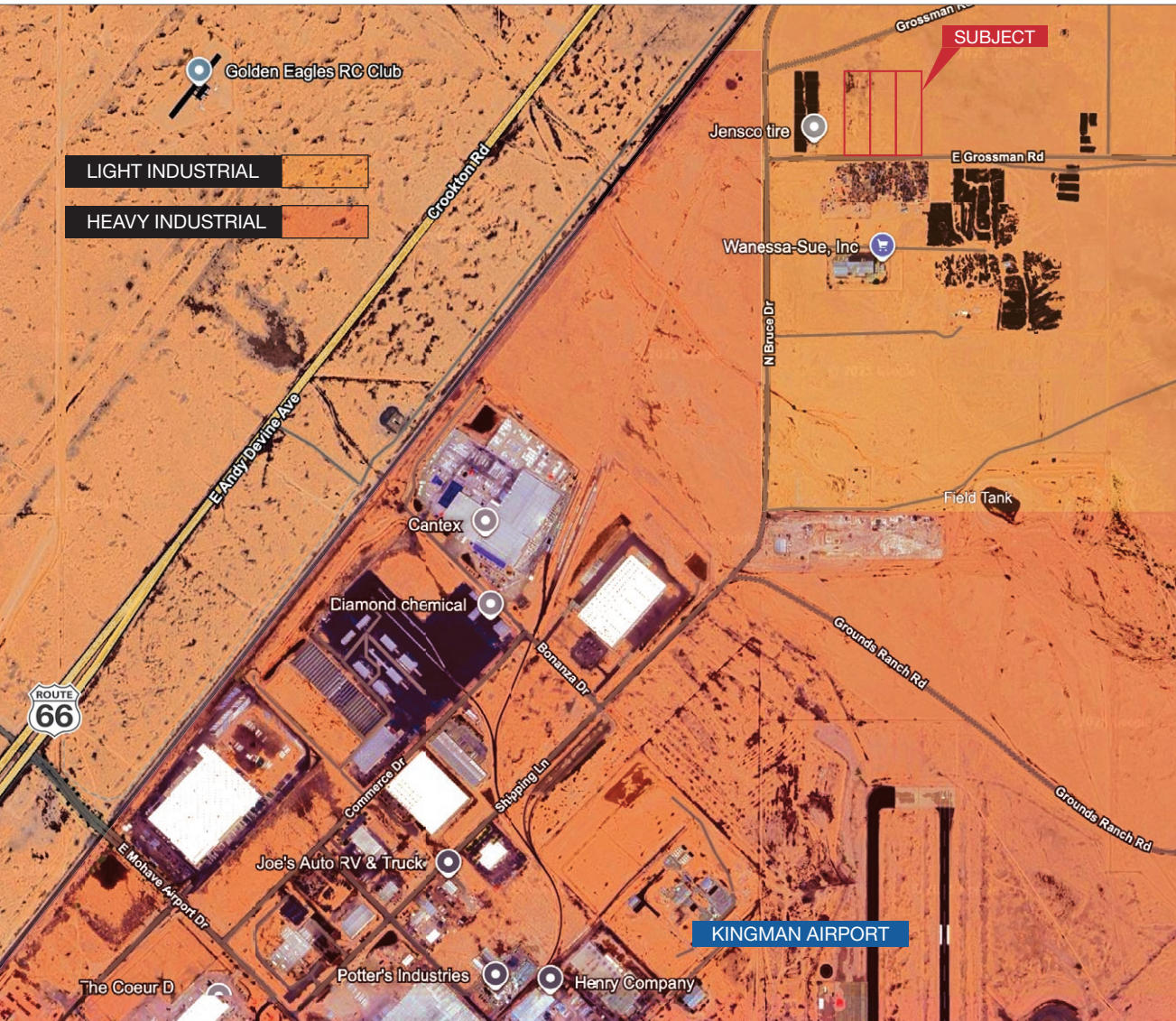
INSIDE THIS ZONE YOU'LL FIND:

- Kingman Airport (IGM) and runways.
- The Kingman Industrial Park (over 4,000 acres, one of the largest industrial parks in Arizona)
- Rail access via BNSF Railway spur.
- Major employers and logistics hubs that take advantage of both the I-40 corridor and the enterprise incentives.

±7.56 Acres For Sale: \$600,000 (\$79,365/AC | \$1.82/SF)

John Filli, SIOR
 602 852 3411 • john.filli@naihorizon.com

2944 N 44th St, Suite 200
 Phoenix, AZ 85018
 +1 602 955 4000
 naihorizon.com



Kingman Industrial Park/Airport are located along US Hwy 66, about 5 miles north of 1-40 & US Hwy 93

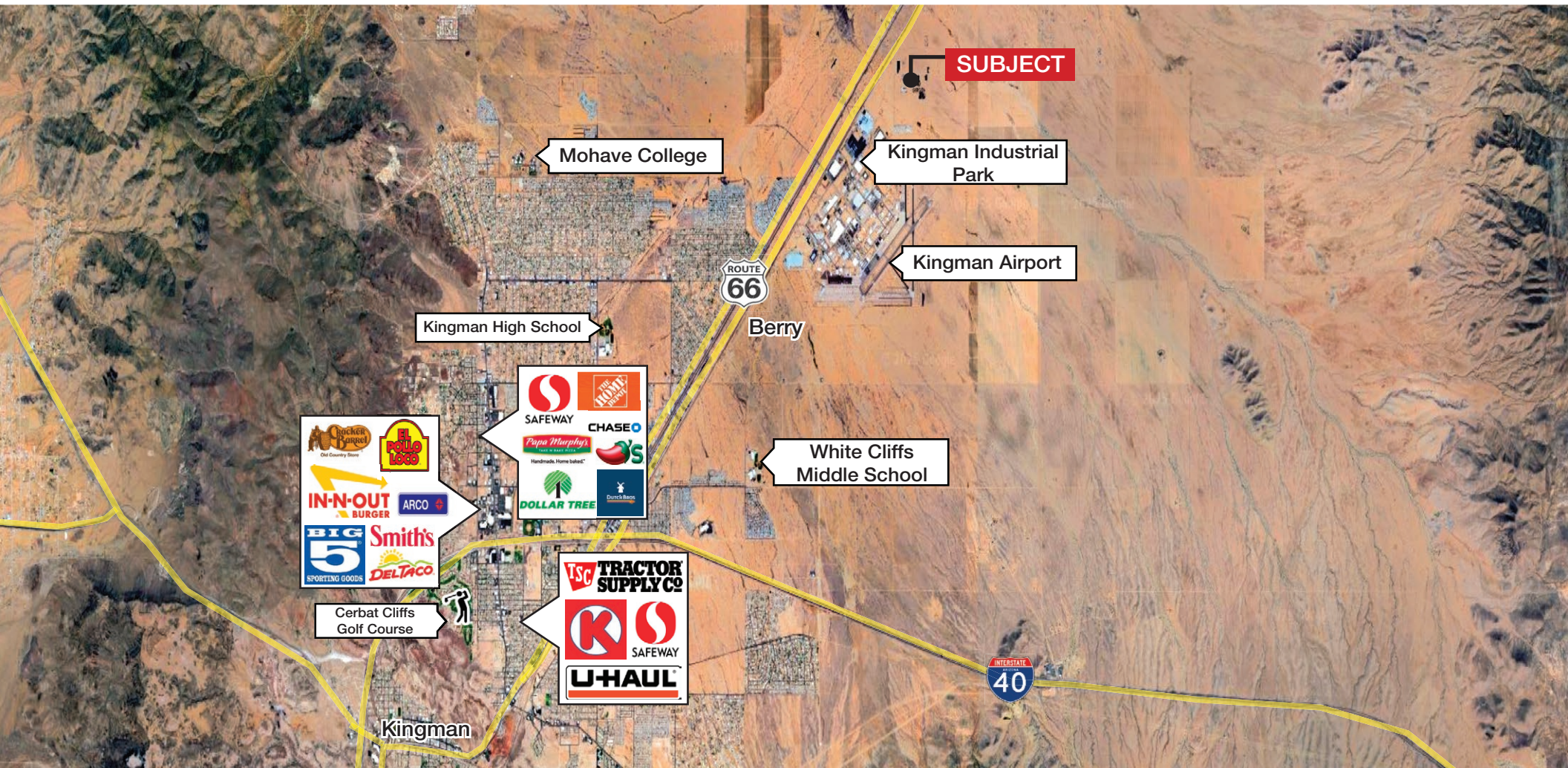
Property Information

| | |
|---------------|---------------------------------------|
| Location: | 5041 E Grossman Rd, Kingman, AZ 86401 |
| Offer Size: | ±7.56 AC (329,314 SF) |
| Sale Price: | \$600,000 (\$79,365/AC \$1.82/SF) |
| Parcel Sizes: | 3 parcels, ±2.52 Acres each |
| Best Use: | Industrial, Commercial |
| Parcel APNs: | 310-12-141, 310-12-142, & 310-12-143 |
| Zoning: | Industrial, Mohave County |
| Electric: | Unisource Energy |
| Natural Gas: | Unisource Energy |
| Water: | City of Kingman |
| Sewer: | City of Kingman |

Property Highlights

- The ±7.56 Acre Industrial Land Site that is available for sale lies within the Kingman Industrial Park
- The Elevation of Kingman Industrial Park is 3,446 Feet
- The Kingman Industrial Park/Airport are served by the Burlington Northern & Santa Fe Railroad
- Both the Kingman Ind Park & adjoining Airport are also located within an Enterprise zone
- The Kingman Airport is also Home of the Kingman Airport Authority

Retail Map



John Filli, SIOR
 602 852 3411 • john.filli@naihorizon.com

2944 N 44th St, Suite 200
 Phoenix, AZ 85018
 +1 602 955 4000
 naihorizon.com

Kingman Stats

34 Million

People Within a Day's Drive

Number 1

Largest Industrial Park in Northern Arizona
with major business friendly benefits

Number 1

Location on Route 66 for Global Tourists

40,000

People pass by Kingman Daily

70 Miles

from the western entrance to Grand
Canyon National Park

100 Miles

from Las Vegas

200 Miles

from Phoenix

318 Miles

from Los Angeles

Source: <https://www.choosekingman.com/relocate/history>

25-04-067

John Filli, SIOR

602 852 3411 • john.filli@naihorizon.com

2944 N 44th St, Suite 200

Phoenix, AZ 85018

+1 602 955 4000

naihorizon.com