

BETHESDA SUITE AVAILABLE IMMEDIATELY

# FOR LEASE

7809 Woodmont Avenue ♦ Bethesda, Maryland 20814



- 2<sup>nd</sup> Floor – 3,000 S.F.
- \$40.00 per S.F.
- 3 to 10-year term
- Adjacent to public parking
- Kitchenette
- 2 onsite parking spaces included
- 2 private restrooms
- Only 3 blocks to Metro
- High-end finishes
- Private entrance with direct elevator access
- 24/7 tenant-controlled HVAC
- Balcony (2<sup>nd</sup> floor)



*For more information or to schedule a tour, please contact:*

**301.961.9696**

**Sam Farnum – ext. 216**

**[sfarnum@amrcommercial.com](mailto:sfarnum@amrcommercial.com)**

**Bill Montrose – ext. 203**

**[wmontrose@amrcommercial.com](mailto:wmontrose@amrcommercial.com)**

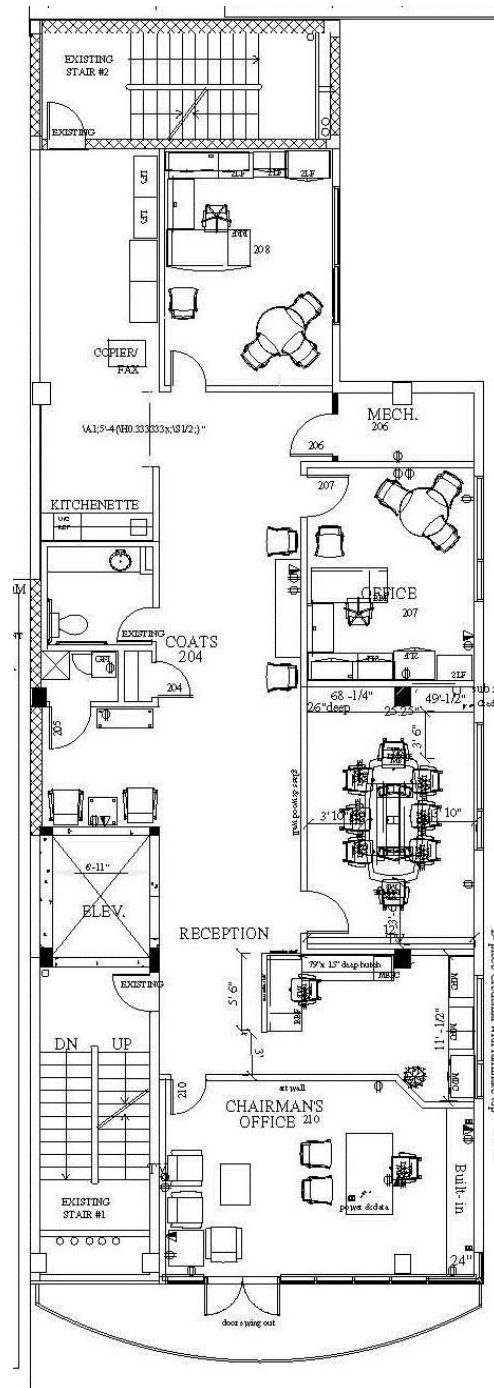


ALEXANDER, MONTROSE, RITTENBERG  
Commercial Real Estate Brokerage  
Est. 1994

*Celebrating*  
**31**  
*Years*  
1994-2025

Although all information is furnished regarding for sale, rental or financing is from sources we deem reliable, such information has not been verified and no express representation is made nor is any to be implied as to the accuracy thereof, and it is submitted subject to errors, omissions, changes of price, rental or other conditions, prior sale, lease or financing or withdrawal without notice.

## 2<sup>ND</sup> FLOOR



*Woodmont Ave.*

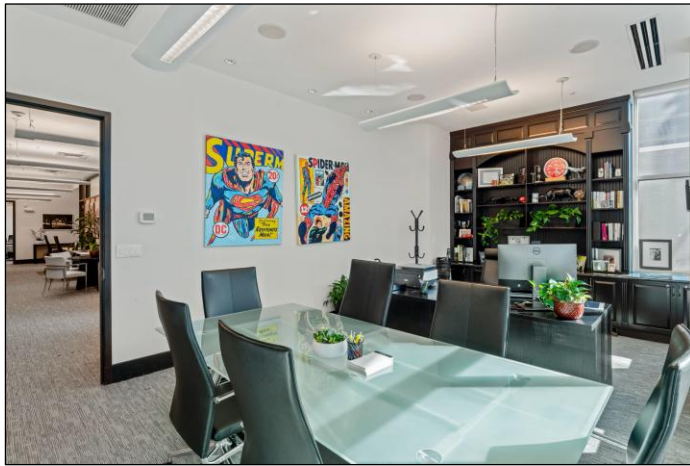
~ FURNITURE NOT INCLUDED ~

NOT TO SCALE | MEASUREMENTS APPROXIMATE

Although all information furnished is from sources we deem reliable, such information has not been verified and no express representation is made, nor is any to be implied, as to the accuracy thereof, and it is submitted subject to errors, omissions, changes of price/rental or other conditions prior to sale or lease, and subject to withdrawal without notice.

7809 Woodmont Avenue ♦ Bethesda, Maryland 20814

**2<sup>ND</sup> FLOOR**



~ FURNITURE NOT INCLUDED ~

*For more information or to schedule a  
tour, please contact:*

**301.961.9696**

**Sam Farnum – ext. 216**

**[sfarnum@amrcommercial.com](mailto:sfarnum@amrcommercial.com)**

**Bill Montrose – ext. 203**

**[wmontrose@amrcommercial.com](mailto:wmontrose@amrcommercial.com)**



ALEXANDER, MONTROSE, RITTENBERG  
Commercial Real Estate Brokerage  
Est. 1994

*Celebrating*  
**31** *Years*  
1994-2025