



# OFFICE SPACE FOR LEASE

## 110 S HAGER AVE, BARRINGTON, IL



### BUILDING FEATURES:

- Building Renovations Including common areas, New LED lighting, flooring, signage & parking lot upgrades in 2021
- 225 SF (1st Floor space) Available
- Building renovations in 2021
- Operable Windows and Efficient Layouts
- Located Across from Barrington High School
- All Inclusive Executive Suites available 180- 400 SF
- High End Finishes & ADA Restrooms
- Ample Parking on site
- Near Restaurants, Shopping and Metra
- Exterior Signage Available
- RENTAL RATE: SEE BELOW
  - \* Rate Includes HVAC, Janitorial & Electricity
  - WI-FI & Common Area Kitchen Access
- Visit [www.chicagolandcommercial.com](http://www.chicagolandcommercial.com) for links to 3-D Virtual Tours!!

### AVAILABLE SPACE:

SUITE	SIZE (SF)	PRICING	AVAILABLE
101-C	225 RSF	\$495 Per Month *	12/1/25

Secure Private Office  
w/ exterior window

\*\*EXECUTIVE OFFICE SUITES HAVE OPERABLE WINDOWS & INCLUDES UTILITIES & WI-FI\*\*

### FOR MORE INFORMATION:

RANDY OLCZYK

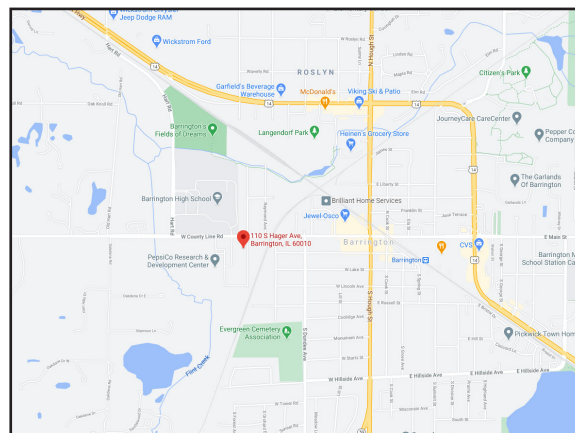
Direct: 847.246.9611

[randy@chicagolandcommercial.com](mailto:randy@chicagolandcommercial.com)

TOM CALLAHAN

Direct: 847.246.9636

[Tom@chicagolandcommercial.com](mailto:Tom@chicagolandcommercial.com)



**Chicagoland**  
**Commercial**  
REAL ESTATE

4811 Emerson Ave Suite 112, Palatine, IL 60067

[www.chicagolandcommercial.com](http://www.chicagolandcommercial.com)



# OFFICE SPACE FOR LEASE

## 110 S HAGER AVE, BARRINGTON, IL

### INTERIOR BUILDING PHOTOS





# OFFICE SPACE FOR LEASE

## 110 S HAGER AVE, BARRINGTON, IL

### INTERIOR BUILDING PHOTOS

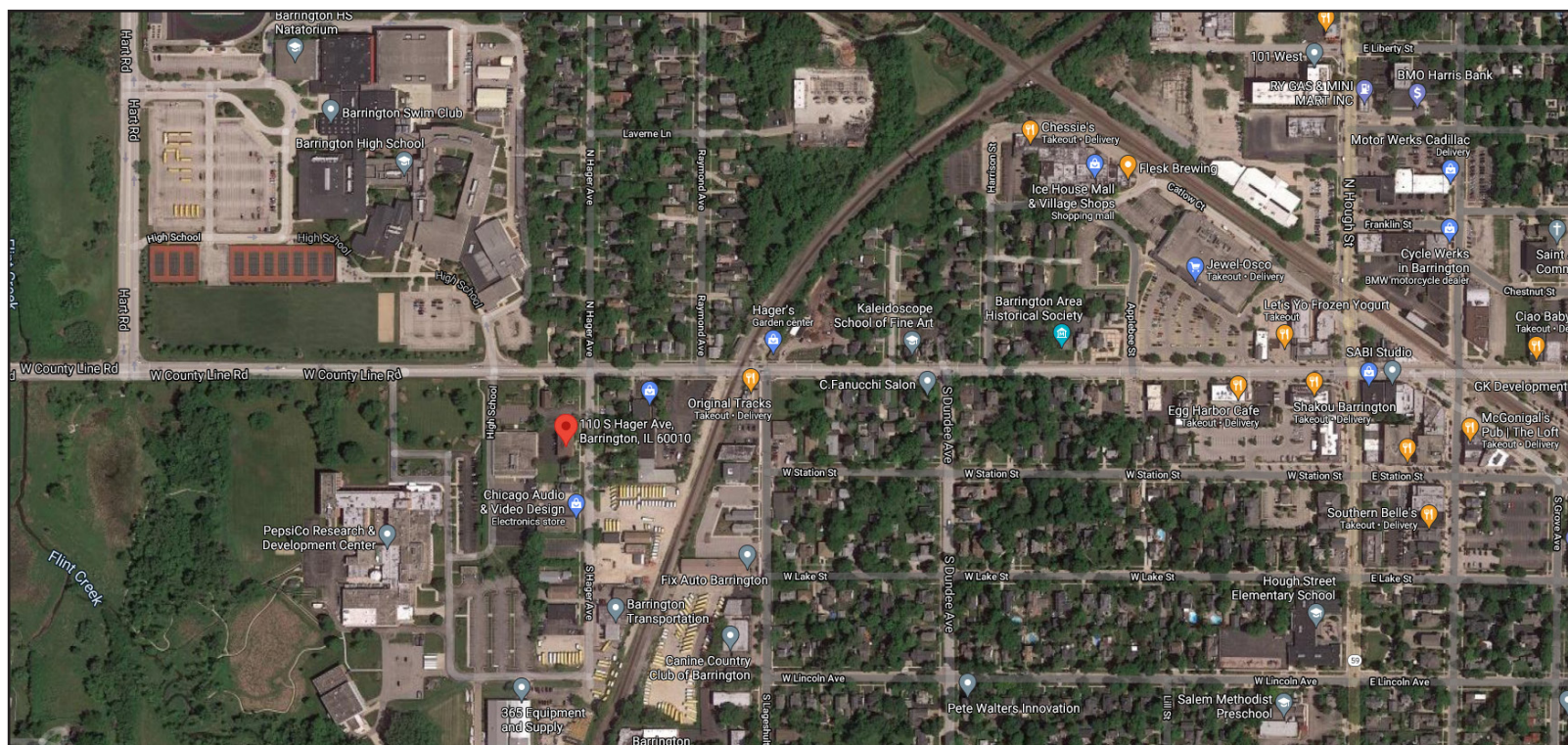
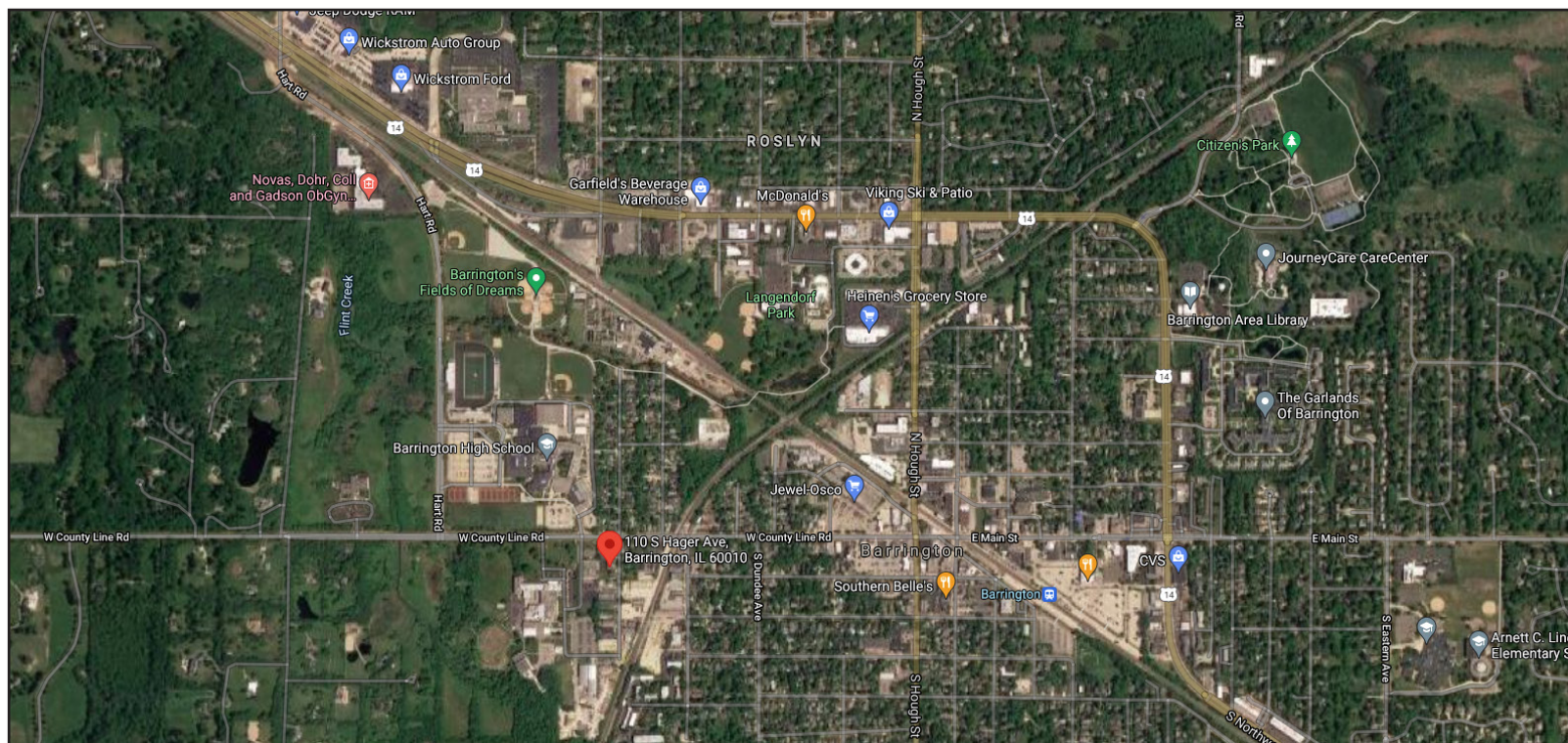




# OFFICE SPACE FOR LEASE

## 110 S HAGER AVE, BARRINGTON, IL

### AERIAL MAP



### FOR MORE INFORMATION:

RANDY OLCZYK  
Direct: 847.246.9611  
randy@chicagolandcommercial.com

TOM CALLAHAN  
Direct: 847.246.9636  
@chicagolandcommercial.com



4811 Emerson Ave Suite 112, Palatine, IL 60067

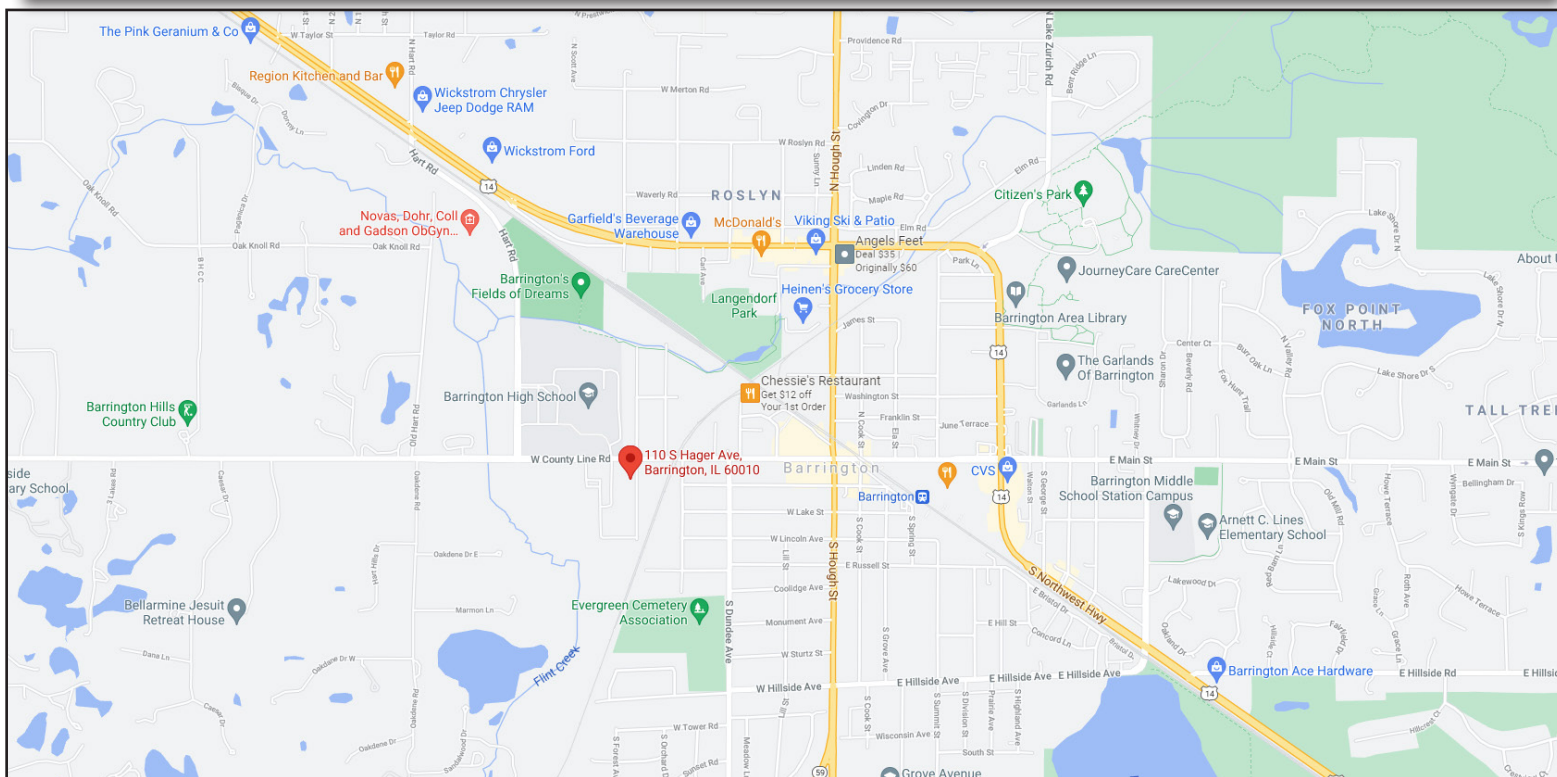
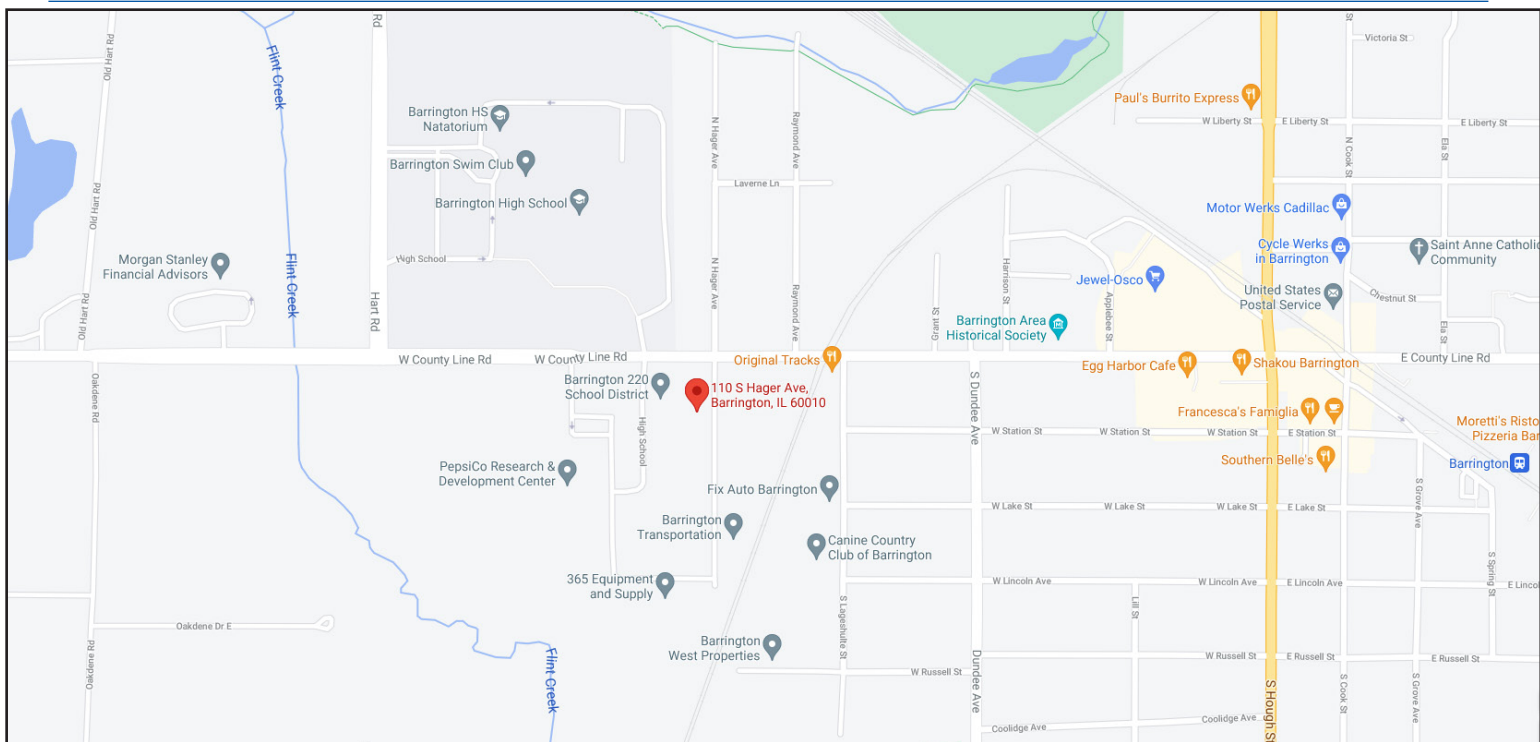
LEASING | SALES | TENANT ADVISORY | MANAGEMENT

[www.chicagolandcommercial.com](http://www.chicagolandcommercial.com)



# OFFICE SPACE FOR LEASE 110 S HAGER AVE, BARRINGTON, IL

## LOCATION MAP



## FOR MORE INFORMATION:

RANDY OLCZYK  
Direct: 847.246.9611  
randy@chicagolandcommercial.com

TOM CALLAHAN  
Direct: 847.246.9636  
@chicagolandcommercial.com



**Chicagoland**  
**Commercial**  
**REAL ESTATE**

4811 Emerson Ave Suite 112, Palatine, IL 60067

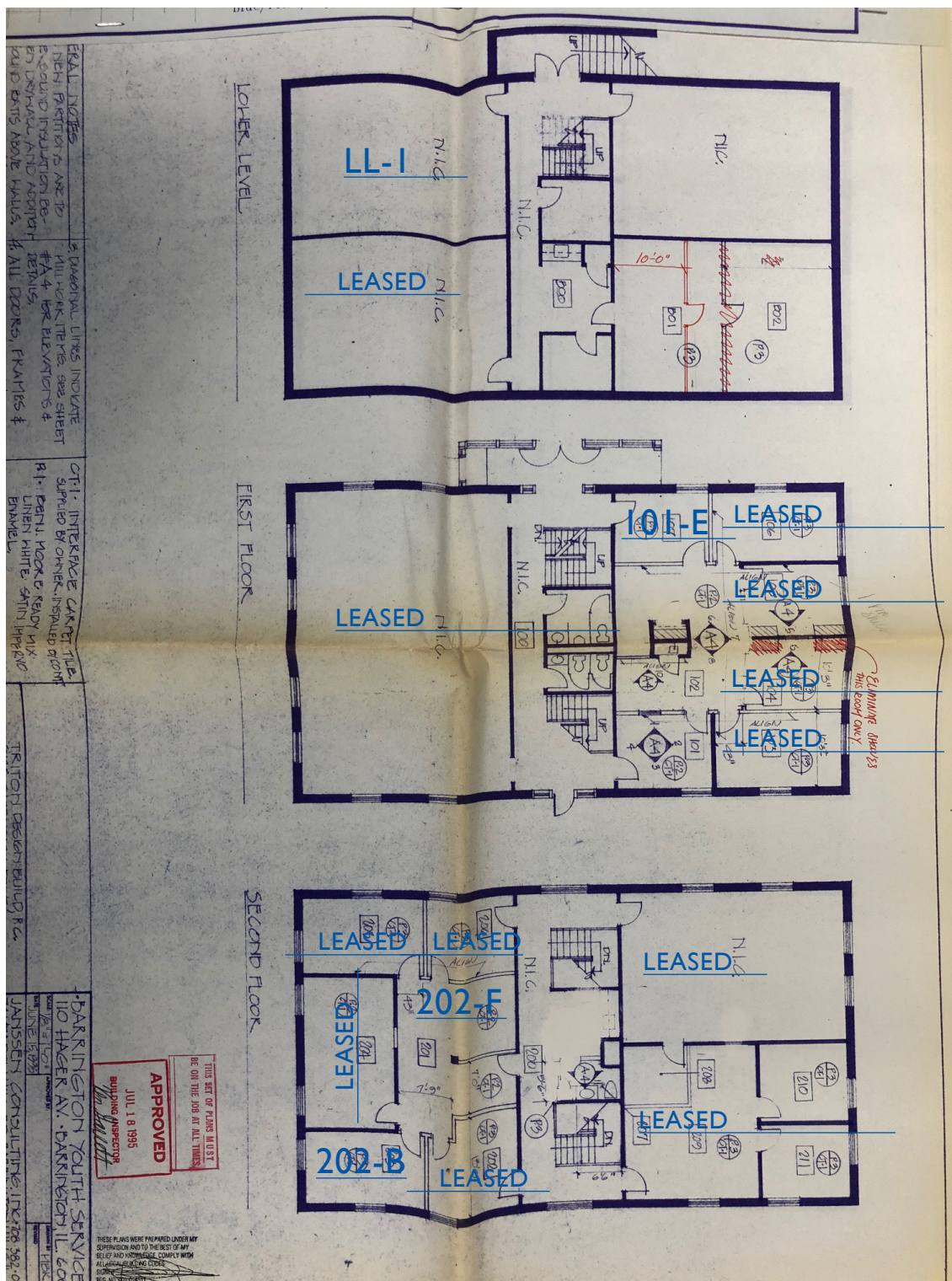
LEASING | SALES | TENANT ADVISORY | MANAGEMENT

[www.chicagolandcommercial.com](http://www.chicagolandcommercial.com)



# OFFICE SPACE FOR LEASE 110 S HAGER AVE, BARRINGTON, IL

## FLOOR PLATES



### FOR MORE INFORMATION:

RANDY OLCZYK  
Direct: 847.246.9611  
randy@chicagolandcommercial.com

TOM CALLAHAN  
Direct: 847.246.9636  
@chicagolandcommercial.com



4811 Emerson Ave Suite 112, Palatine, IL 60067

LEASING | SALES | TENANT ADVISORY | MANAGEMENT

[www.chicagolandcommercial.com](http://www.chicagolandcommercial.com)