

FOR SALE/LEASE



5705 & 5709 - 50 STREET
WARBURG, AB



BRENT JOHANNESSEN
brent.johannesen@cushwake.com

JORDAN LEBLANC
jordan.leblanc@cushwake.com

KURT PAULL
kurt.paull@cwedm.com

JEFF DROUIN DESLAURIERS
jeff.deslauriers@cwedm.com

PROPERTY DETAILS

FOR SALE/LEASE | 5705 & 5709 - 50 Street, Warburg, AB

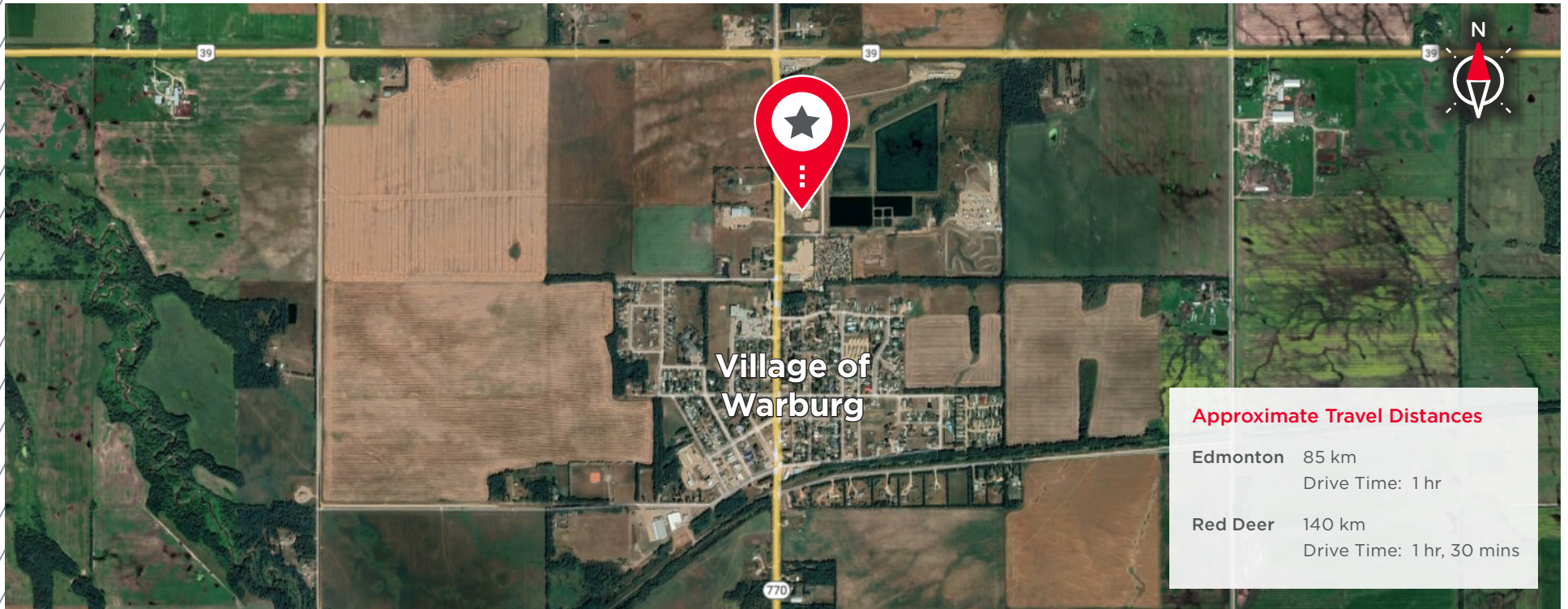
District:	Leduc County
Legal Description:	Plan 7921263, Block 1, Lots 2 & 3
Site Size:	± 2.70 acres
Total Rentable Area:	± 20,000 sf
Loading:	3 drive-in doors
Zoning:	L-1
Ceiling Height:	26'
Power:	TBV
Heating:	Radiant
Asking Price:	\$1,200,000
Asking Lease Rate:	\$6.00 psf
Property Taxes:	\$12,134 (2022)
Availability:	Immediate

HIGHLIGHTS

- Multi-door industrial facility with small office component
- ± 2,500 sf quonset included
- Two (2) separately titled lots
- Fully fenced property
- Built in 2005



LOCATION MAP



Village of
Warburg

Approximate Travel Distances

Edmonton	85 km Drive Time: 1 hr
Red Deer	140 km Drive Time: 1 hr, 30 mins

BRENT JOHANNESSEN
Vice President
Industrial Sales & Leasing
D: 403 261 1116
C: 403 589 8600
brent.johannesen@cushwake.com

JORDAN LEBLANC
Senior Associate
Industrial Sales & Leasing
D: 403 261 1166
C: 403 660 5141
jordan.leblanc@cushwake.com

KURT PAULL, SIOR
Associate Partner - Edmonton
Industrial Sales & Leasing
D: 780 702 4258
C: 780 932 0578
kurt.paull@cwedm.com

JEFF DROUIN DESLAURIERS
Associate - Edmonton
Industrial Sales & Leasing
D: 780 701 3289
C: 587 338 5333
jeff.deslauriers@cwedm.com

BRAD PILLING
Vice President
Industrial Sales & Leasing
D: 403 261 1121
C: 403 880 1419
brad.pilling@cushwake.com

ZACK DARRAGH
Associate Vice President
Industrial Sales & Leasing
D: 403 261 1120
C: 587 437 2595
zack.darragh@cushwake.com

SAM HURL
Associate
Industrial Sales & Leasing
D: 403 261 1115
C: 403 630 7215
sam.hurl@cushwake.com



CUSHMAN & WAKEFIELD ULC
250 - 6 Ave SW, Suite 2400
Calgary, AB T2P 3H7
cushmanwakefield.com