



# Office Space For Lease

**350 TERRY STREET  
LONGMONT, CO**

## Space Available

2,325 SF- 8,597 SF

## Lease Rate

\$15.00/SF NNN

## Office Space for Lease

### Property Highlights

- Walking distance to Downtown Longmont
- Recently renovated office building
- NextLight gigabit service available
- Surface and street parking available
- Efficient floorplates

*For information, please contact:*

### Roger Simpson

t 303-260-4366

roger.simpson@nrmk.com

1800 Larimer Street, Suite 1700,  
Denver, CO 80202

[nrmk.com](http://nrmk.com)

# NEWMARK

The information contained herein has been obtained from sources deemed reliable but has not been verified and no guarantee, warranty or representation, either express or implied, is made with respect to such information. Terms of sale or lease and availability are subject to change or withdrawal without notice.

## 350 TERRY STREET, LONGMONT, CO

### Spaces Available

Suite 110- 3,476 SF

Suite 140- 2,325 SF

Suite 150 - 4,005 SF

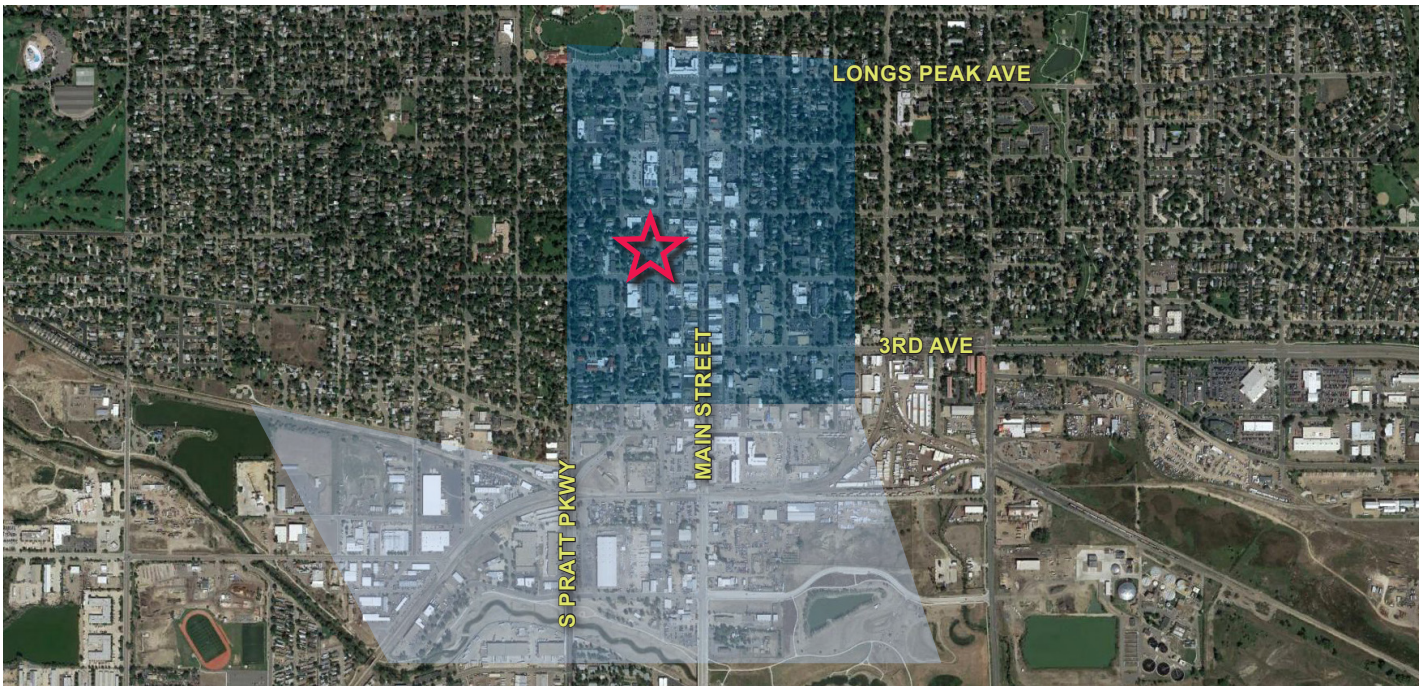
Suite 200 - 8,597 SF

### Details

Lease Rate: \$15.00/SF NNN

Terms: 3-5 years

Parking: Ratio of 2.8/1,000 SF



|                        |                     |
|------------------------|---------------------|
| Mike O'Shays           | Left Hand Brewing   |
| Restaurant & Ale House | Sugarbeet           |
| The Roost              | Tortuga's           |
| Rosalee's Pizzeria     | Bootstrap Brewing   |
| Lucile's Creole Cafe   | 300 Suns Brewing    |
| Janie's Cafe           | Wibbly Brewing      |
| Ziggi's Coffee         | Scratch Kitchen and |
| Flavor of India        | Food Truck          |
| St. Vrain Cidery       | MCCarthy's Pub      |
| Martinis Bistro        | Santiago's          |
| Pumphouse Brewery      | Cheese Importers    |
| Spicy House            | Georgia Boys BBQ    |
| Restaurant             |                     |