

# W MARKET ST UNIVERSAL CENTER

2815 W Market Street  
Johnson City, TN 37604

## Location

Intersection of W Market St and Woodlawn Drive in west Johnson City

## Available for Lease

Suite 30: 3,412 SF flex space  
\$7/SF/year NNN

## Highlights

Reception, private office, 2 restrooms & climate-controlled warehouse area with drive-in door

Water/sewer service included in NNN

Secure, fenced-in area

Approx. 0.3 miles from Walmart Supercenter

Less than one mile from Johnson City Medical Center

Ceiling height - low end 10' 8", top 14' 4"

## Traffic Counts

W Market St: 28,786 (2018)

## Demographics

(2019 Est.)	3 mile	5 mile	10 mile
Population	40,263	76,024	141,492
Median HH Income	\$38,496	\$38,673	\$43,243
Median Age	38.5	39.7	41.8

## Contact

**Shannon K. Castillo**

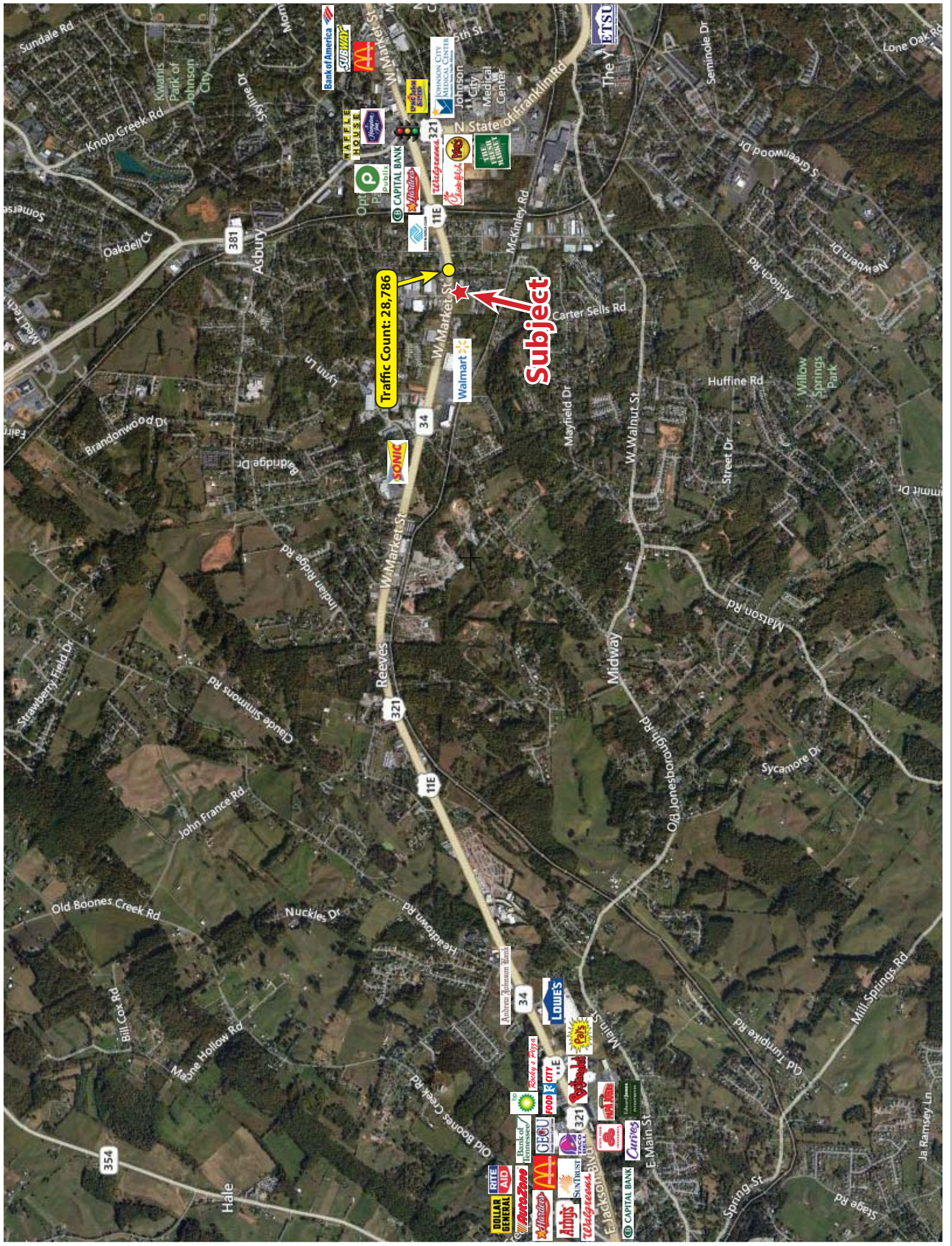
Affiliate Broker

shannon@mitchcox.com

📞 423-282-6582 | 📠 423-282-5903  
www.mitchcox.com











NEW WALL CONSTRUCTION

EXISTING WALL TO REMAIN

EXISTING - TO BE REMOVED

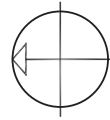
F.E.— TYPE ABC — 10 LBS. MULTI-PURPOSE  
○ DRY CHEMICAL FIRE EXTINGUISHER  
MOUNTED ON WALL WITH BRACKET.  
REFER TO DETAIL THIS SHEET

DEMISING WALL (EXIST.)  
(1-HR. RATED)

THESE DRAWINGS ARE THE PROPERTY OF MITCH COX CONSTRUCTION INC. THEY ARE NOT TO BE ALTERED, REPRODUCED OR REUSED IN ANY MANNER WITHOUT WRITTEN PERMISSION OF MITCH COX CONSTRUCTION INC.

## ^ — ADDENDUM

PLAN NORTH ONLY





**MITCH COX**  
REALTOR, INC.

2304 Silverdale Drive, Suite 200, Johnson City, TN 37601  
423-282-6582 (o) 423-282-5903 (f) [www.mitchcox.com](http://www.mitchcox.com)