

**Available
For Lease**

Cerritos Triangle

NWC 183rd Street / Gridley
Cerritos, CA



FOR LEASE:

**3,485 Sq Ft +/-
(May consider dividing)**

**680 Sq Ft +/-
Upstairs Office Space**

DEMOGRAPHICS:	1 Mile	2 Mile	3 Mile
Population:	19,020	111,338	262,262
Avg. HH Income:	\$101,360	\$99,058	\$94,812

ESRI (2019 est)

- Remodel complete
- Competitive Lease Rates
- Adjacent to Cerritos Mall
- Near Major Chain Stores
- Additional Underground parking
- Retail with second floor office



Brokerage Company, Inc.

John Moss
(949) 334-4042 Phone
(949) 705-9662 Cell
jmoss@pcbcgroup.com
DRE License #00854999

David Morgan
(714) 745-6996 Cell
(949) 334-4055 Phone
dmorgan@pcbcgroup.com
DRE License #00801950

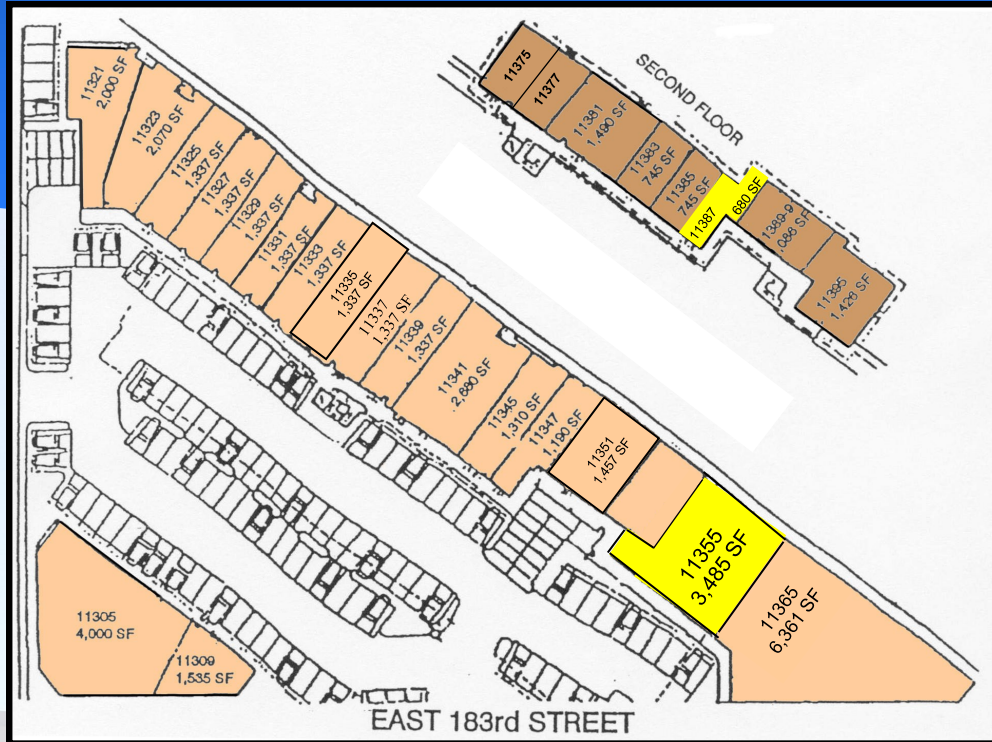
No warranty or representations, either expressed or implied, is made by Parker Commercial Brokerage Company, Inc., its agents or staff, as to the accuracy of the information contained herein, and may be withdrawn or changed without notice; furthermore, same is submitted subject to any errors or omissions, including but not limited to size, rental rates, estimated other charges of leases, change of price, listing conditions, or other conditions imposed by the ownership.

**Available
For Lease**

Cerritos Triangle

NWC 183rd Street / Gridley
Cerritos, CA

Site Plan



1st Floor

Suite	Tenant	SQ.FT. +/-
11321	Mexican Restaurant	2,000
11323	Thai BBQ	2,070
11325	Beauty Salon	1,337
11327	Native Visions	1,337
11329	Vegi Wokery	1,337
11331	Packaged To Go	1,337
11333	Hair Salon	1,337
11335	Skin Care	1,337
11337	Amore Culinary	1,337
11339	Miracle Ear	1,337
11341	Gym / Fitness	2,680
11345	Shoe Repair	1,310
11347	Dental Office	1,190
11351	Optometrist	1,457
	Escrow	724
11355	Available	3,485
11365	Century 21 Astro	6,361

2nd Floor

Suite	Tenant	SQ.FT +/-
11375	Valdemar Hair Studio	750
11377	Family Counseling Center	750
11381	Fu Ta Investors	1,490
11383	Medical Spa	745
11385	Golden Diamond Hospice	745
11387	Available 12/01/2025	680
11389-91	Medical Office	1,086
11395	Privilege Home Services	1,426
Freestanding Building		
11305	Kusina Filipina Restaurant	4,000
11309	Dairy Queen	1,535

All Square Feet (SF) quoted are +/-
and subject to field verification by prospective
tenant prior to lease execution.



Brokerage Company, Inc.

John Moss
(949) 334-4042 Phone
(949) 705-9662 Cell
jmos@pcbcgroup.com
DRE License #00854999

David Morgan
(714) 745-6996 Cell
(949) 334-4055 Phone
dmorgan@pcbcgroup.com
DRE License #00801950

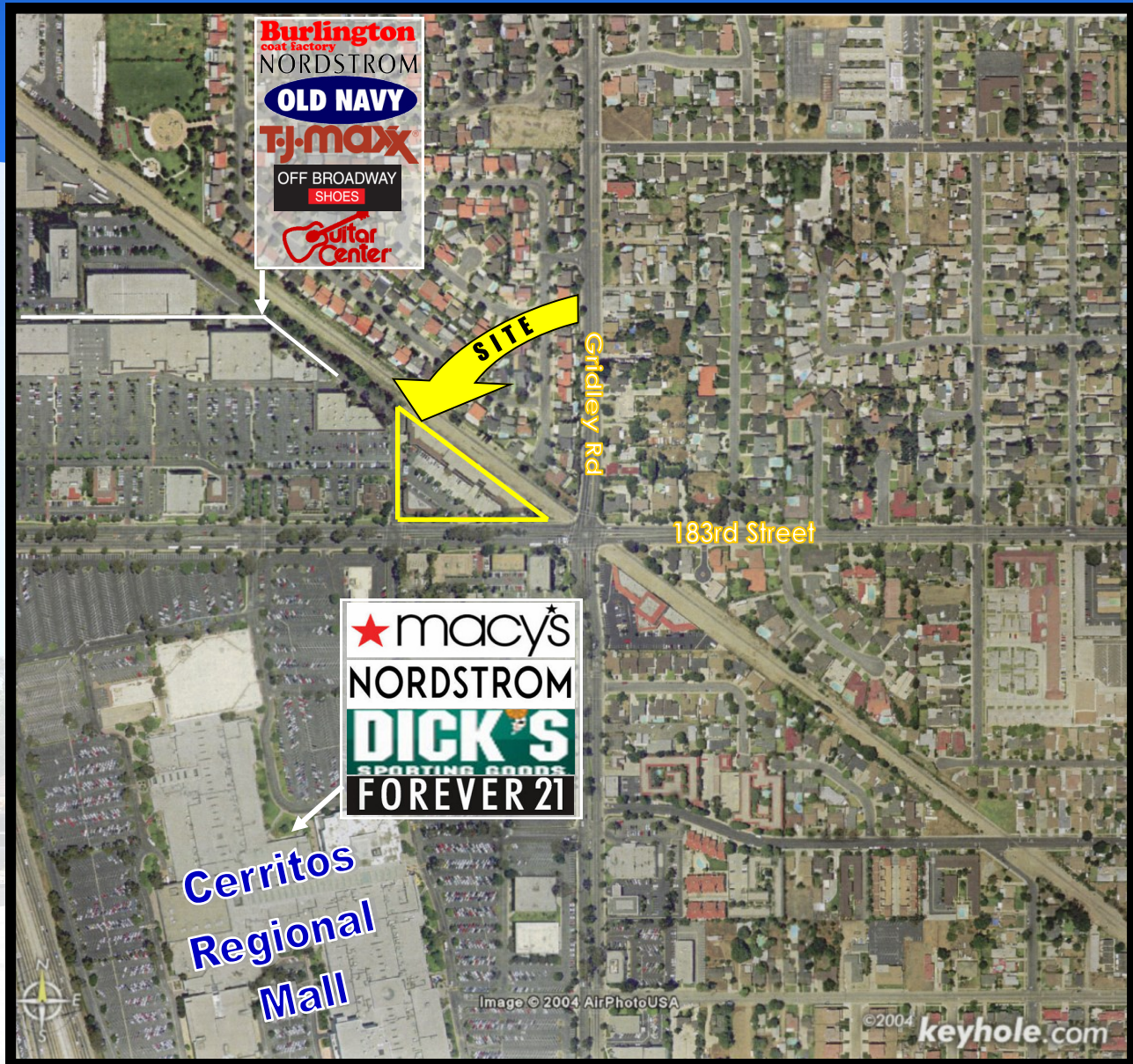
No warranty or representations, either expressed or implied, is made by Parker Commercial Brokerage Company, Inc., its agents or staff, as to the accuracy of the information contained herein, and may be withdrawn or changed without notice; furthermore, same is submitted subject to any errors or omissions, including but not limited to size, rental rates, estimated other charges of leases, change of price, listing conditions, or other conditions imposed by the ownership.

**Available
For Lease**

Cerritos Triangle

NWC 183rd Street / Gridley
Cerritos, CA

Aerial



This aerial reflects some, but certainly not all, stores that may be in the area. Same is provided without warranty, is subject to errors and omissions, and is further provided subject any prospective tenant making its own advance field verification prior to lease execution as to which businesses exist within the zone, or may be entertaining this marketplace.



Brokerage Company, Inc.

John Moss
(949) 334-4042 Phone
(949) 705-9662 Cell
jmoss@pcbcgroup.com
DRE License #00854999

David Morgan
(714) 745-6996 Cell
(949) 334-4055 Phone
dmorgan@pcbcgroup.com
DRE License #00801950

View web for all Parker Commercial represented properties at www.pcbcgroup.com

No warranty or representations, either expressed or implied, is made by Parker Commercial Brokerage Company, Inc., its agents or staff, as to the accuracy of the information contained herein, and may be withdrawn or changed without notice; furthermore, same is submitted subject to any errors or omissions, including but not limited to size, rental rates, estimated other charges of leases, change of price, listing conditions, or other conditions imposed by the ownership.