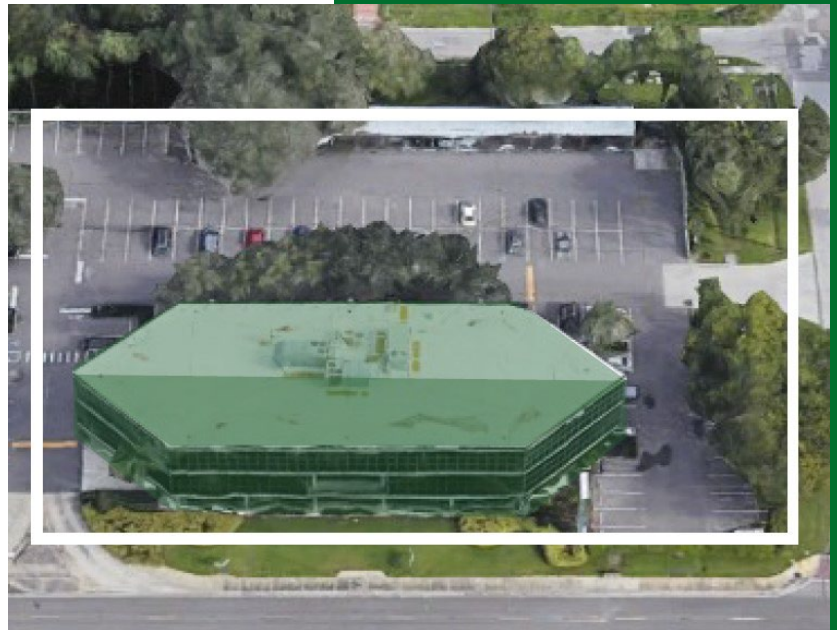


3,745 RSF available for lease

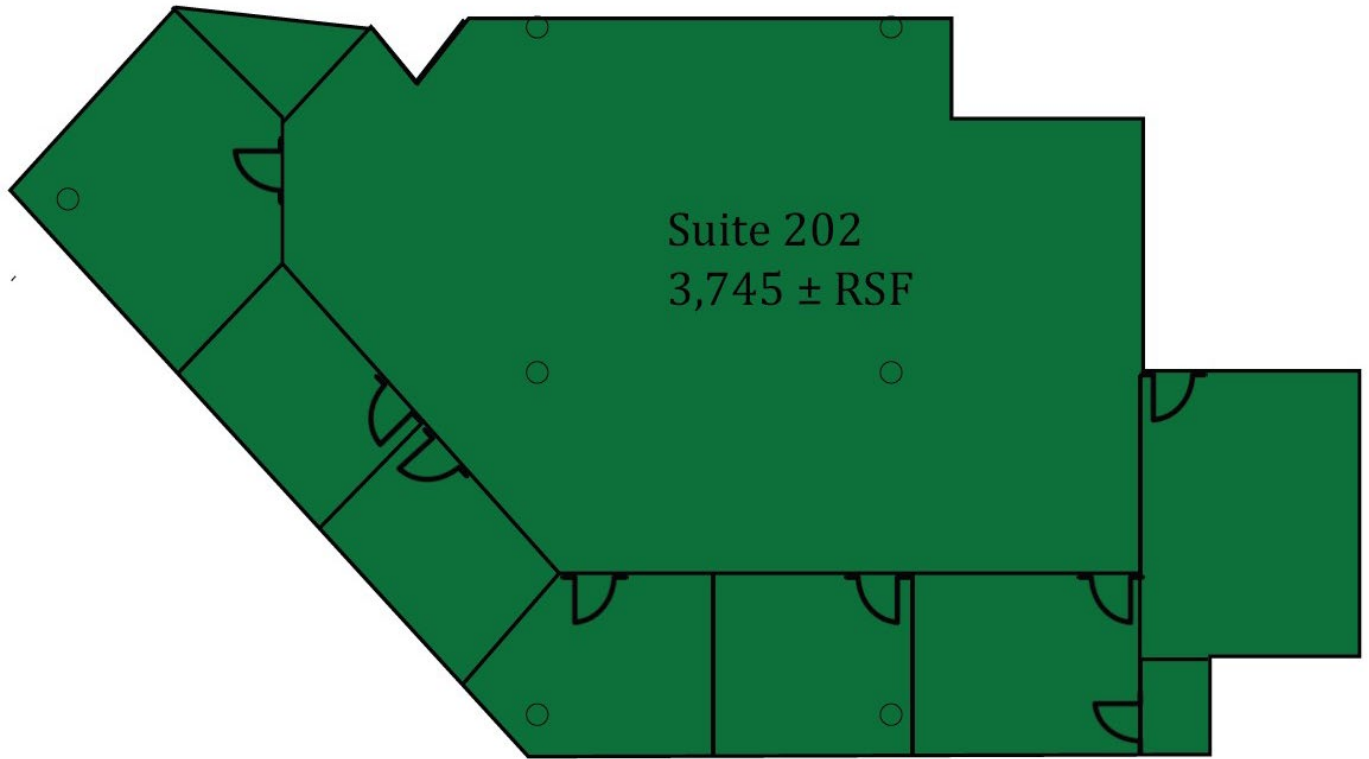


SITE INFORMATION

- 3-story, Class A office building located in the heart of Westshore Business District
- Highly visible location located on the Northwest corner of Kennedy Blvd. between Lois and Westshore
- Pylon signage available
- Card only access system
- 4/1,000 SF parking ratio, surface lot with covered available



Suite 202: 3,745 ± RSF



Space Information

- 3,745 RSF office space available
- Open floorplan with 6 exterior executive offices and a conference room
- Spacious second floor lobby
- Access to large, fully stocked kitchen
- Available turnkey with furniture

Contact Information

**Chad Keller |
Lyle Fogarty**

Ckeller@clover-properties.com
Lfogarty@clover-properties.com

813-641-4261

4401 W. Kennedy Blvd
Tampa, FL 33609





4401 W Kennedy Blvd

Demographics	1 Mile	3 Mile	5 Mile
Population	13,895	87,524	243,215
Total Households	6,146	38,429	104,676
Median Age	41	40	39
Average HH Income	\$115,513	\$113,325	\$95,621

Contact Information

**Chad Keller |
Lyle Fogarty**

Ckeller@clover-properties.com
Lfogarty@clover-properties.com

813-641-4261

