

# ENTIRE SECOND FLOOR FOR LEASE

Railroad Plaza  
2108 Railroad Avenue  
Pittsburg, CA 94565

**3600 SQFT  
DIVISIBLE**

Randy Baugh  
530-672-6060  
dcirandy@gmail.com

=



- **3600 SQFT (DIVISIBLE)**
- **TI ALLOWANCE**
- **4-SIDED BUILDING SIGNAGE**
- **PRIVATE LOBBY**
- **PRIVATE ELEVATOR**
- **EXTENSIVE GLASS LINE**
- **5 – PER 1000 PARKING**



RAILROAD PLAZA



Development Consultants Inc.

RANDY BAUGH - 530-672-6060 - DCIRANDY@GMAIL.COM



Development Consultants Inc.

RANDY BAUGH - 530-672-6060 - DCIRANDY@GMAIL.COM



Los Medanos College

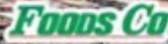
Stoneman Elementary School

Black Diamond High School

Church of the Good Shepherd

Highlands Elementary School

Hillview Junior High School



Recycling Zone

Faith Worship Center



Brinteva world's



All-N-1 Auto body



Express Smog Test Only



Sunshine Cafe



Wah Sing

California Delta Hwy



RAILROAD PLAZA



Railroad Ave





Development Consultants Inc.  
RANDY BAUGH - 530-672-6060 -  
DCIRANDY@GMAIL.COM





Development Consultants Inc.

RANDY BAUGH - 530-672-6060 - DCIRANDY@GMAIL.COM



USS POSCO  
Human Resources



St. James Cathedral  
Of Faith COGIC

Pittsburg  
High School

Martin Luther King,  
Jr. Junior High School

Contra Costa  
Fire - Station 84

Pirate  
Stadium

Public  
Storage

Pittsburg School  
District Office

Mar-Ray Motel



Pittsburg  
Superior Court

RAILROAD  
PLAZA



All-N-1  
Auto body



California Delta Hwy

Railroad Ave





Development Consultants Inc.  
 RANDY BAUGH - 530-672-6060 - DCIRANDY@GMAIL.COM

RAILROAD  
PLAZA

Little Caesars Walgreens TACO BELL  
 ARCO metro by T-Mobile

McDonald's Shell Chevron

ACE AutoZone  
 O'Reilly Kentucky Fried Chicken  
 Public Storage Bank of America Starbucks Jack in the Box

THE HOME DEPOT WinCo FOODS Jack in the Box  
 Public Storage dd's DISCOUNTS Hampton  
 Starbucks Chevron BIG O TIRES SONIC

target COSTCO WHOLESALE LOWE'S BURGER KING  
 Burlington JOANN DRESS FOR LESS  
 BIG 5 HARBOR FREIGHT TOOLS  
 PET SMART DOLLAR TREE CVS pharmacy DEL TACO  
 McDonald's cricket AT&T IN-N-OUT

CARDENAS TOGO'S PANDA EXPRESS  
 BURGER KING AMERICA'S TIRE BR  
 Western Dental Jamba Juice CHASE 76

SAFeway RITE AID AutoZone CHASE  
 BURGER KING Starbucks ROUND TABLE PIZZA ROYALTY  
 WELLS FARGO T DOLLAR TREE GNC

goodwill Foods Co RBC  
 Walgreens CVS pharmacy WELLS FARGO  
 McDonald's Aaron's BANK OF WEST  
 T DOLLAR TREE cricket DOMINO'S  
 SUBWAY metro

planet fitness Walmart  
 SUBWAY POPEYES  
 6 metro IHOP

BIG LOTS! Smart & Final AutoZone  
 GROCERY OUTLET Firestone  
 99c ONLY HIBBETT SPORTS CHASE  
 WELLS FARGO 24 FITNESS BANK OF WEST  
 SUBWAY Bath & Body Works

Railroad Ave

California Delta Hwy



# PITTSBURG | CONTRA COSTA COUNTY | CA

The City was incorporated in 1903 and is located along the Sacramento-San Joaquin River Delta, situated on the north side of Mount Diablo. Pittsburg is located in the northeast part of Contra Costa County. The City is perfectly situated for easy access to the greater Bay Area, Napa Valley, Sacramento, and the foothills of the Sierra Nevada Mountains and Lake Tahoe. Today, Pittsburg is one of the fastest growing cities in Contra Costa County. With planned housing, business and commercial development ongoing, Pittsburg is expected to reach a population of nearly 90,000 by 2025. The city has a 2020 population of 72,864.

The City serves as an industrial center and has a large, diverse labor force. Pittsburg is also conveniently located on the Bay Area Rapid Transit System (BART) making a commute to cities throughout the Bay Area very easy. The City is strategically located near a number of prestigious higher education institutions, such as the Cal State East Bay Concord Campus, UC Berkeley and UC Davis, and is the home of Los Medanos College, the sixth ranked community college in the nation. Pittsburg has a rich history of Manufacturing. Pittsburg continues its transition from an economy historically-based in heavy industry and manufacturing to one based on residential service activities—a transition brought about only recently by employment and housing trends. Major employers include Pittsburg Unified School District, Los Medanos Community College, USS - Posco Industries, Dow Chemical Company and City of Pittsburg to name a few that are at the top.

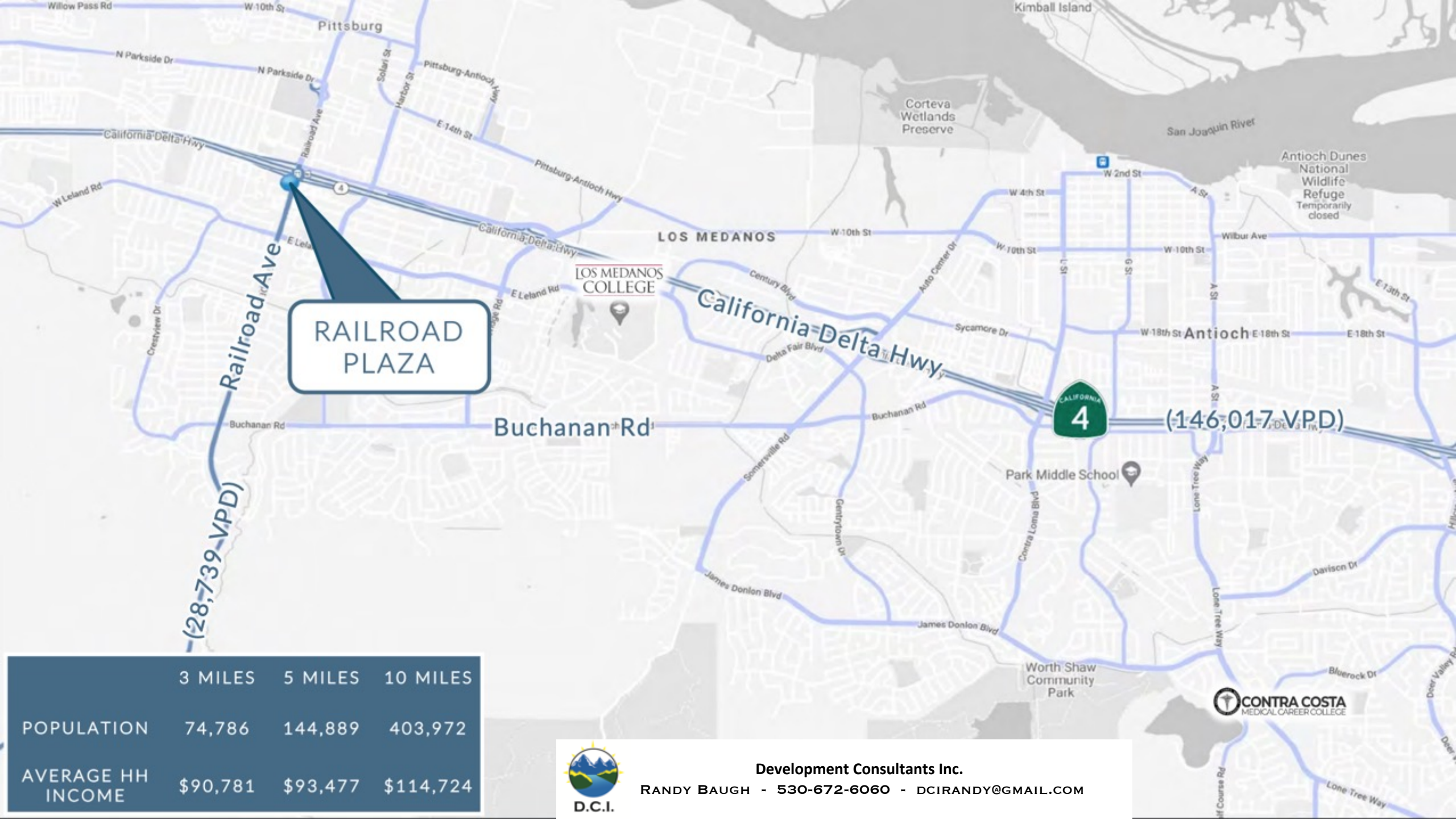
There is a rich history of famous artists performing in Pittsburg. Whether it's the many music legends such as Ray Charles and James Brown who performed at the clubs that once lined Black Diamond Street or at the Creative Arts Building, the musical history in this town is electric. The crown jewel of Pittsburg's attractions is its annual Seafood Festival. Held every September, the festival features a number of different activities, including an air show, powerboat races, continuous musical entertainment and the California Cuisine Pavilion; a showcase of the talents of local chefs from Contra Costa County. Demonstrations on the preparation of delicious gourmet seafood dishes are followed by samplings of seafoods from local vendors. Other nearby Contra Costa County attractions include the Contra Costa County Fairgrounds (Antioch), Mt Diablo State Park (Clayton) and Blackhawk Automotive Museum (Danville).



**Development Consultants Inc.**  
RANDY BAUGH - 530-672-6060 - DCIRANDY@GMAIL.COM

SACRAMENTO, CA





**RAILROAD  
PLAZA**

(28,739 VPD)

(146,017 VPD)

	3 MILES	5 MILES	10 MILES
POPULATION	74,786	144,889	403,972
AVERAGE HH INCOME	\$90,781	\$93,477	\$114,724



**Development Consultants Inc.**  
 RANDY BAUGH - 530-672-6060 - DCIRANDY@GMAIL.COM

