

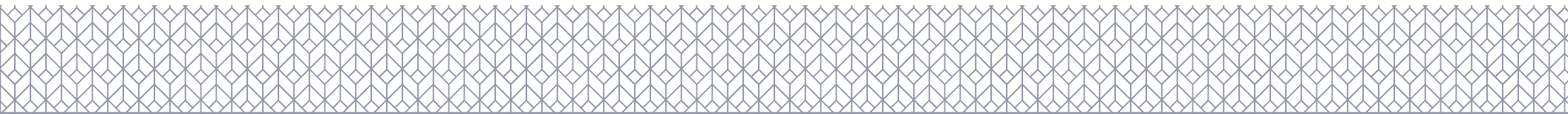
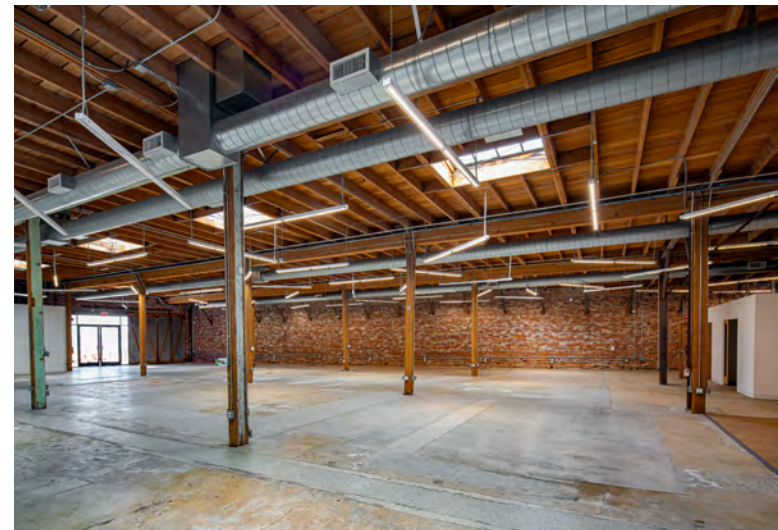
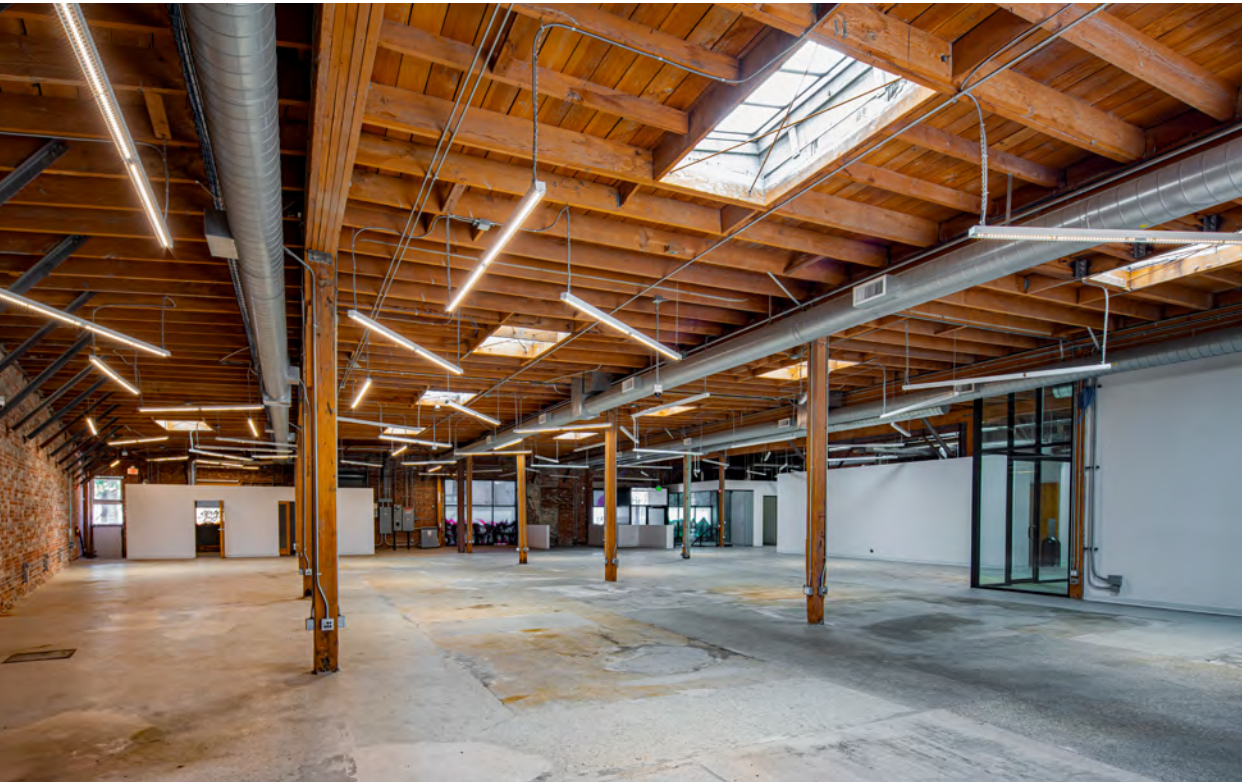


2159 BAY ST

CREATIVE CAMPUS FOR SALE IN THE ARTS DISTRICT

 **CUSHMAN &
WAKEFIELD**
GILL | BURNS | YOO

**TEAM
CONDON**
alexa • amara • brittany • erica
kylie • mike • michael • pete
reid • scott • whitney • zoe





Major Developments



1 ALAMEDA CROSSING



2 676 MATEO



3 641 IMPERIAL



4 670 MESQUIT



5 ONNI GROUP



5 1000 MATEO

Highlights



±39,761 SF Indoor/Outdoor Creative Campus Opportunity



Flexible Occupancy. Great for a Single Occupant or Multi-Tenant



Three Recently Updated Single Story Buildings



±25,000 SF of Outdoor Space



2.5 /1000 Parking



Notable Neighbors include Apple, Warner Music Group



BAY ST

A BUILDING

 ±7,847 SF RENTABLE SF
 15' - 22' CLEAR HEIGHT
 240V-10W/RSF POWER

C BUILDING

 ±7,381 SF RENTABLE SF
 13' - 20' CLEAR HEIGHT
 240V-20W/RSF POWER

SACRAMENTO ST

B BUILDING

 ±24,533 SF RENTABLE SF
 13' - 15' CLEAR HEIGHT
 20W/RSF POWER

±56,768 SF (1.7 AC) OF LAND

A Building



±7,847 SF
RENTABLE SF

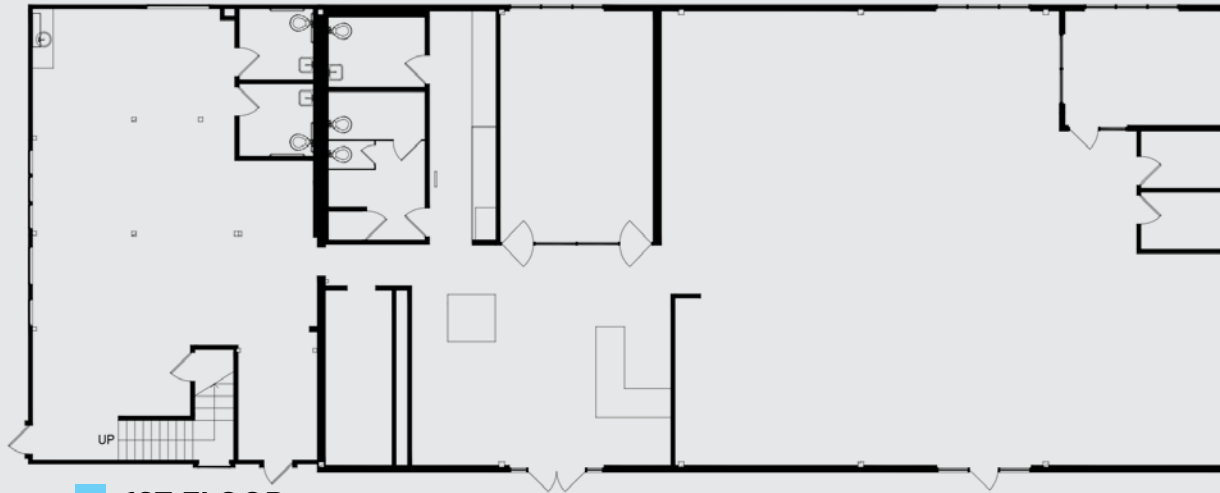


15' - 22'
CLEAR HEIGHT

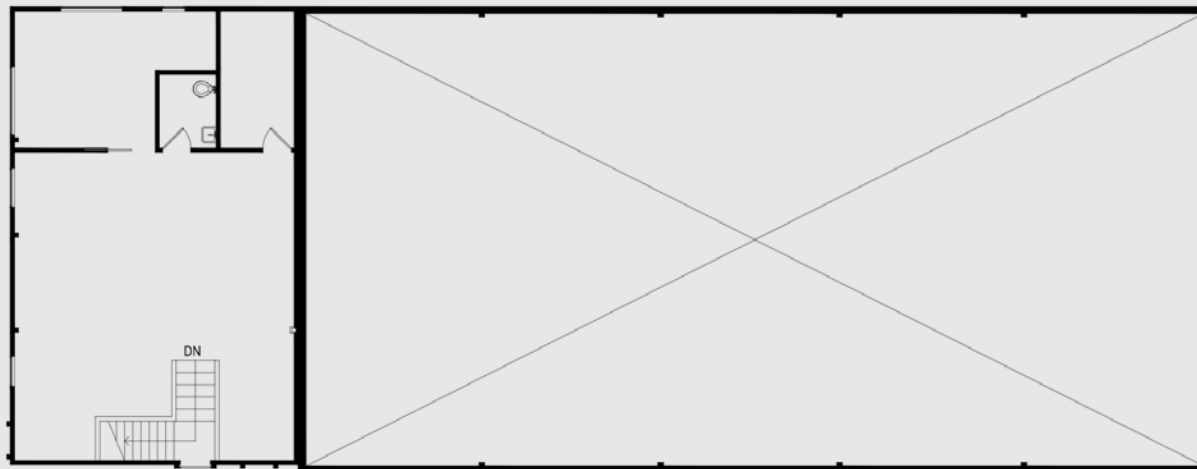




FLOORPLANS

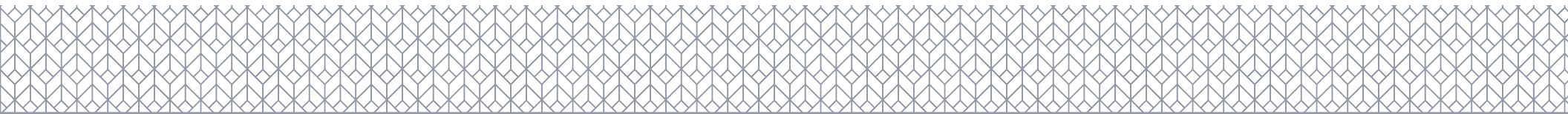


1ST FLOOR



2ND FLOOR

*Please note the above are not exact or to scale - For Discussion Purposes Only.



B Building



±24,533 SF
RENTABLE SF

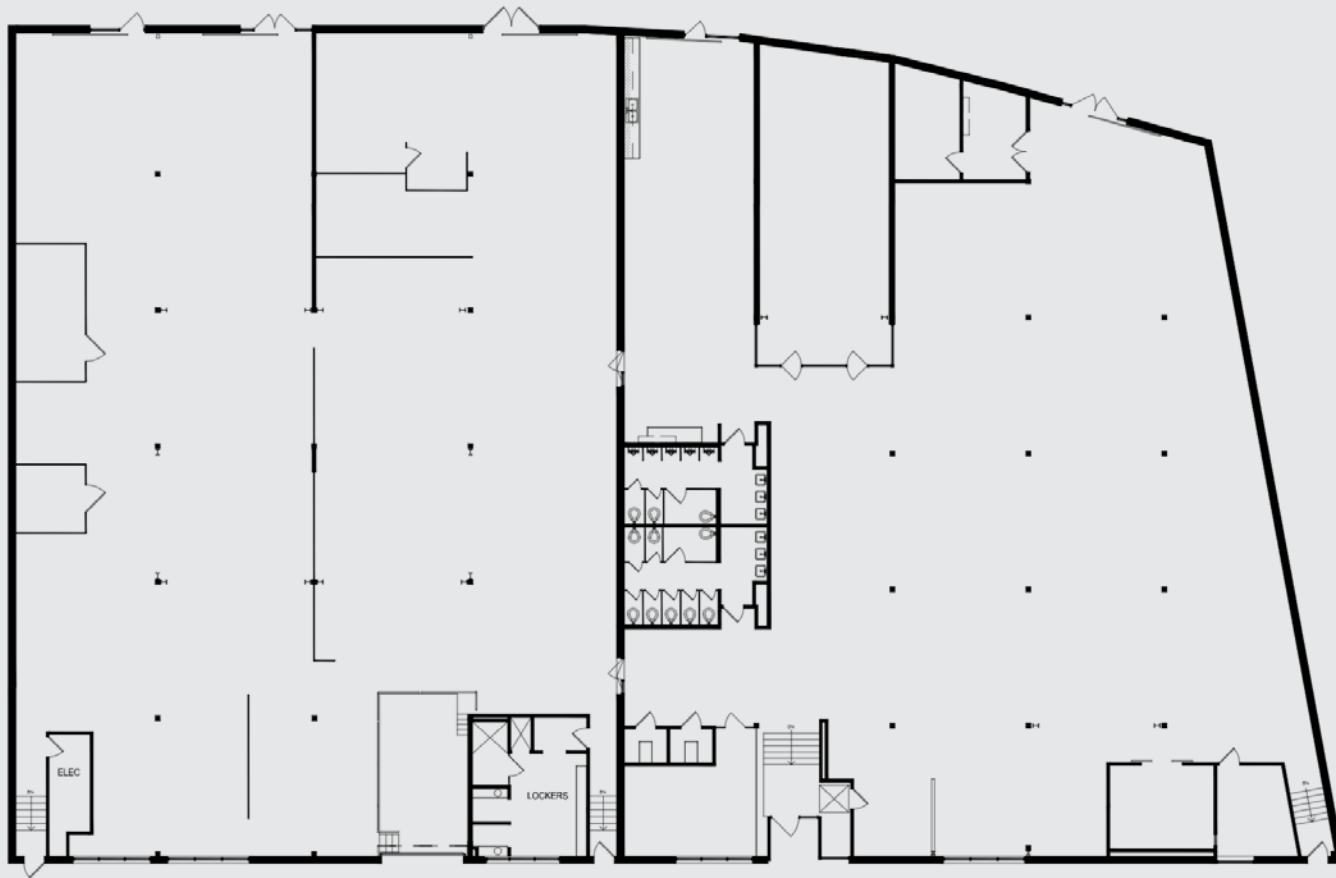


13' - 15'
CLEAR HEIGHT

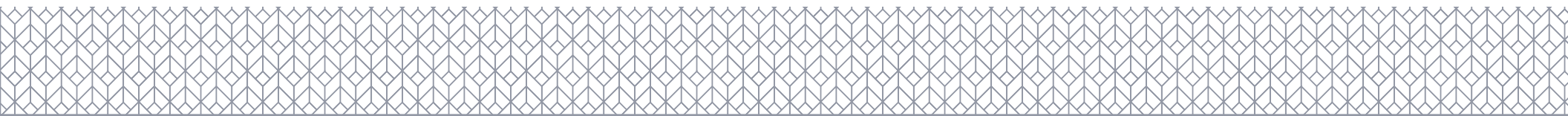
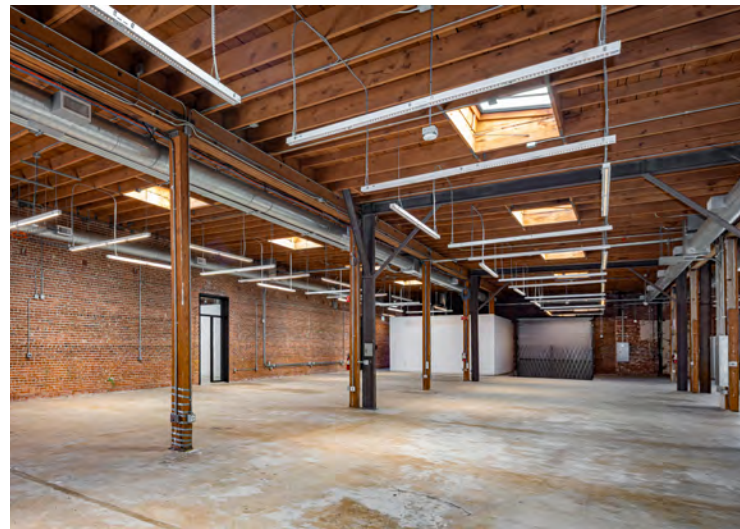
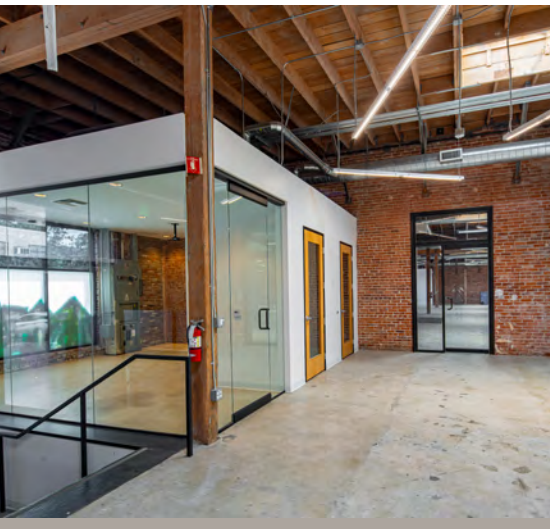




FLOORPLANS



*Please note the above are not exact or to scale - For Discussion Puposes Only.



C Building



±7,381 SF
RENTABLE SF

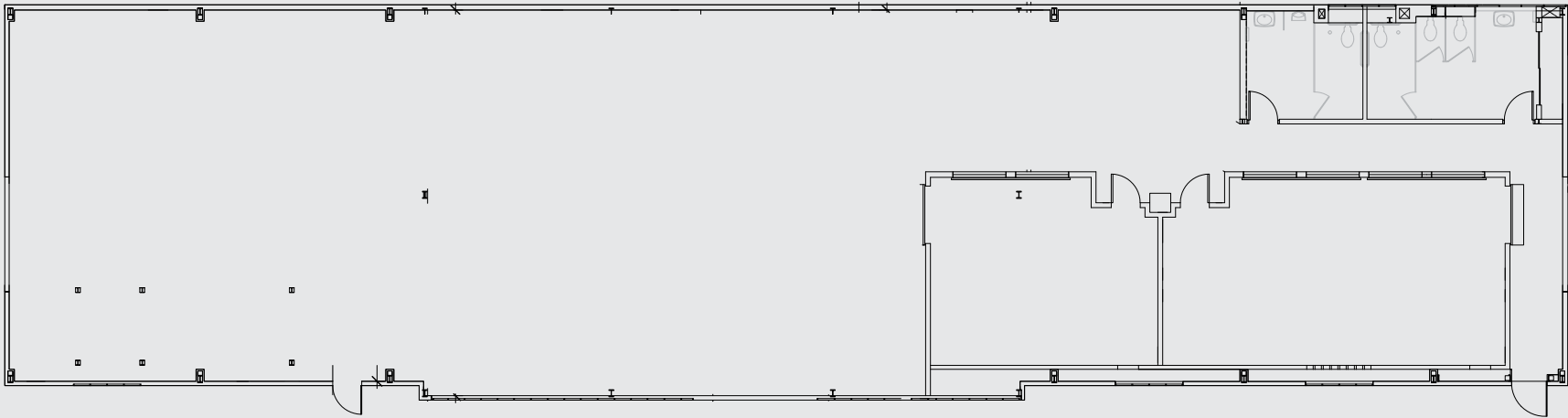


13' - 20'
CLEAR HEIGHT

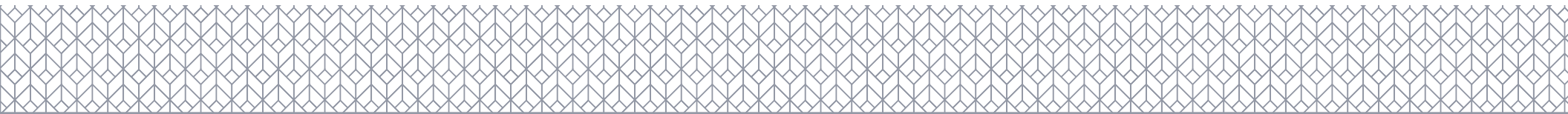




FLOORPLANS



*Please note the above are not exact or to scale - For Discussion Puposes Only.





KATO

world class
AMENITIES



SOHO HOUSE

arts district

- COFFEE
- BARS
- RESTAURANTS
- MARKETS
- MUSEUMS
- STUDIOS



GIRL & THE GOAT



HAUSER & WIRTH



BRANDON GILL

Executive Director

+1 213 629 6528

brandon.gill@cushwake.com

CA LIC 01262330

BRANDON BURNS

Executive Director

+1 213 629 6541

brandon.burns@cushwake.com

CA LIC 01194796

JAE YOO

Executive Director

+1 213 629 6551

jae.yoo@cushwake.com

CA LIC 01503567

MIKE CONDON, JR

Executive Vice Chair

+1 213 629 7379

mike.condon@cushwake.com

CA LIC 01884476

ERICA FINCK

Managing Director

+1 213 426 3052

erica.finck@cushwake.com

CA LIC 02055218

REID GRATSCHE

Senior Financial Analyst

+1 310 943 5526

reid.gratsch@cushwake.com

CA LIC 02101218



©2025 Cushman & Wakefield. All rights reserved. The material in this presentation has been prepared solely for information purposes, and is strictly confidential. Any disclosure, use, copying or circulation of this presentation (or the information contained within it) is strictly prohibited, unless you have obtained Cushman & Wakefield's prior written consent. The views expressed in this presentation are the views of the author and do not necessarily reflect the views of Cushman & Wakefield. Neither this presentation nor any part of it shall form the basis of, or be relied upon in connection with any offer, or act as an inducement to enter into any contract or commitment whatsoever. NO REPRESENTATION OR WARRANTY IS GIVEN, EXPRESS OR IMPLIED, AS TO THE ACCURACY OF THE INFORMATION CONTAINED WITHIN THIS PRESENTATION, AND CUSHMAN & WAKEFIELD IS UNDER NO OBLIGATION TO SUBSEQUENTLY CORRECT IT IN THE EVENT OF ERRORS.