



Outlots For Lease/BTS

3330 Partner Place & 3301 Keithshire Way
Lexington, Kentucky 40503

Outlot

Rate

Size

Lot D

\$75,000 per year

0.83 Acres

Lot E

\$56,250 per year

0.6 Acres

Property Highlights

- Two potential outlots available for ground lease or build-to-suit in a 100% occupied retail center
- +/-104,974 SF retail/office center
- Desirable south Lexington opportunity perfect for retail, restaurants, medical, daycare, banks and more
- Adjacent to the Wellington development, the center thrives from strong residential support in a heavily populated trade area near Fayette Mall, the highest volume mall in the region, Target, The Mall at Lexington Green, +160,000 SF of Class A office space, a +165,000 SF Hilton Suites Hotel and the latest mixed-use destination, The Summit at Fritz Farm
- Located approximately 1.5 miles from Man O' War Boulevard, Keithshire Place is just off Clays Mill Road at Keithshire Way, the southern boundary thoroughfare connecting to Reynolds Road/Fayette Mall/Target and the balance of the Nicholasville Road corridor contains significant retail, restaurant, medical, and educational developments

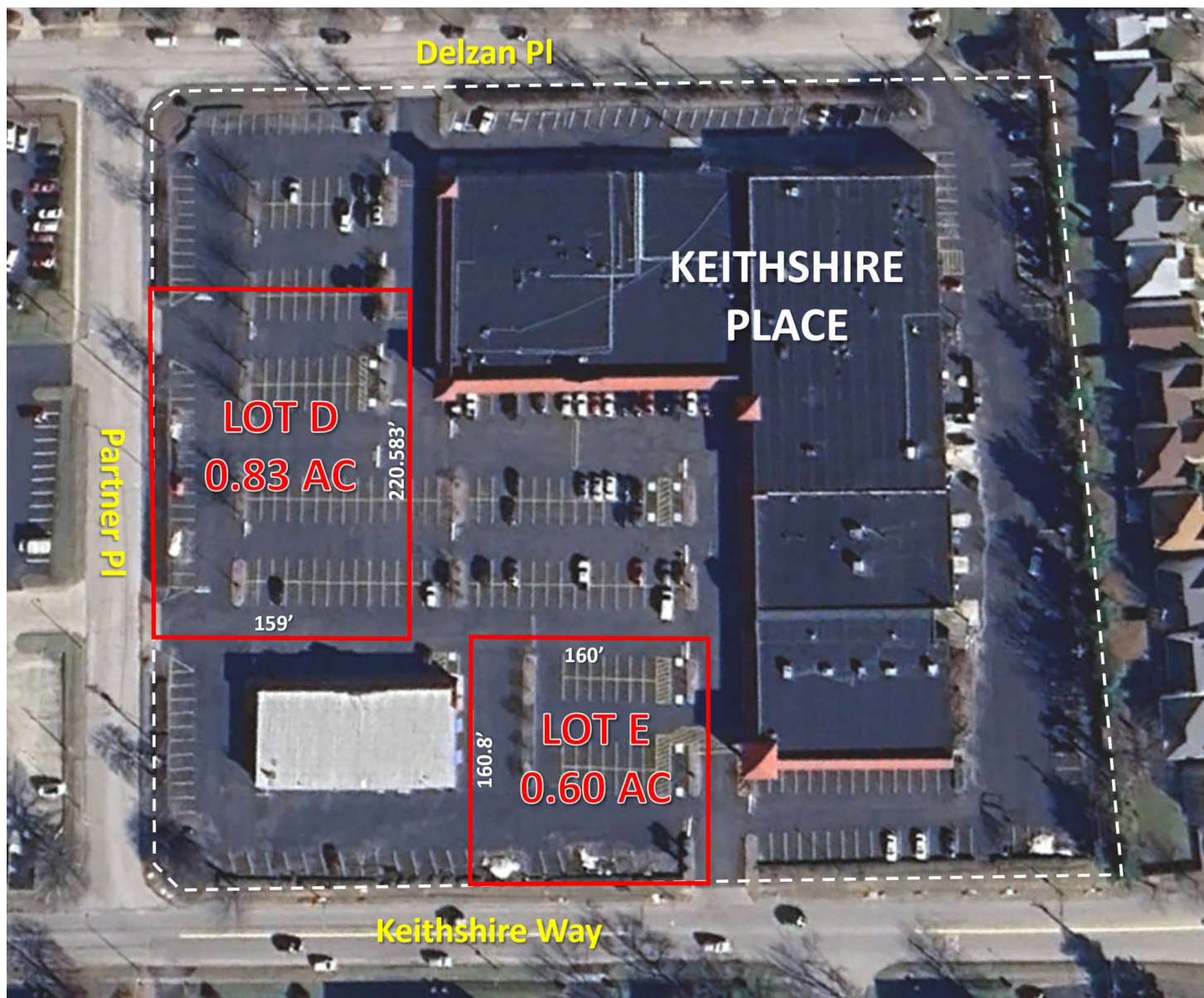
For More Information

Al Isaac

President

O: 859 422 4400

alisaac@naiisaac.com



Available

Outlot

Size (AC)

Lease Type

Lease Rate

Lot D	0.83 Acres	Ground Lease	\$75,000 per year
Lot E	0.6 Acres	Ground Lease	\$56,250 per year



Commercial Real Estate Services, Worldwide.

For Ground Lease/BTS

+/-0.6-0.83 AC Lots

Keithshire Place



NO WARRANTY OR REPRESENTATION, EXPRESS OR IMPLIED, IS MADE AS TO THE ACCURACY OF THE INFORMATION CONTAINED HEREIN, AND THE SAME IS SUBMITTED SUBJECT TO ERRORS, OMISSIONS, CHANGE OF PRICE, RENTAL OR OTHER CONDITIONS, PRIOR SALE, LEASE OR FINANCING, OR WITHDRAWAL WITHOUT NOTICE, AND OF ANY SPECIAL LISTING CONDITIONS IMPOSED BY OUR PRINCIPALS NO WARRANTIES OR REPRESENTATIONS ARE MADE AS TO THE CONDITION OF THE PROPERTY OR ANY HAZARDS CONTAINED THEREIN ARE ANY TO BE IMPLIED.

771 Corporate Drive, Suite 500
Lexington, KY 40503
859 224 2000 tel
naiisaac.com