

7858 INDUSTRIAL PARKWAY
PLAIN CITY, OH 43064

51,500± SF
INDUSTRIAL FOR LEASE



ALEX KUNIEGA
alex.kuniega@lee-associates.com
C 440.318.4078

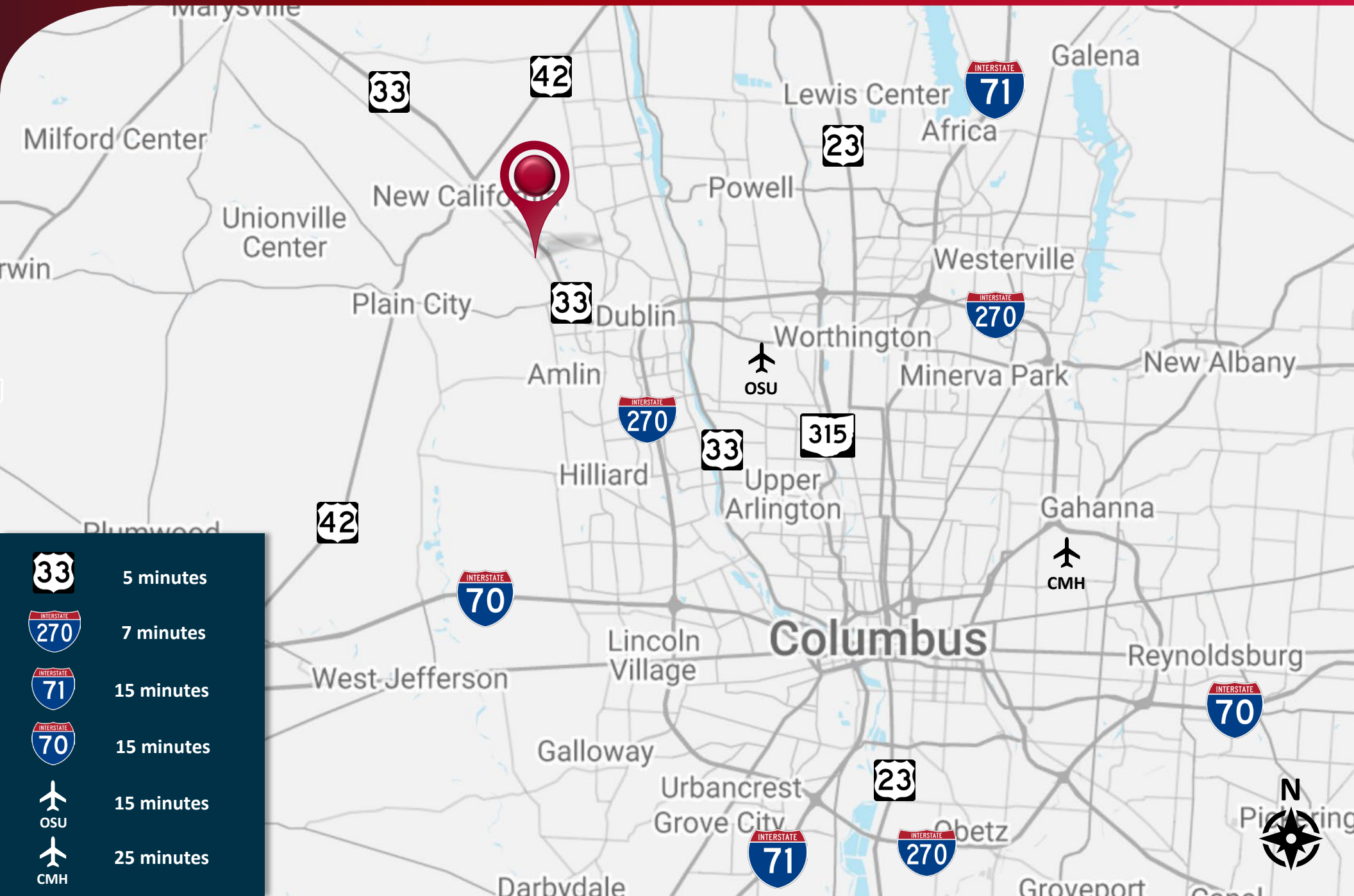
MATT SMITH
matt.smith@lee-associates.com
C 419.450.4436

TODD SPENCER, SIOR, CCIM
todd.spencer@lee-associates.com
C 614.327.0258

MIKE SPENCER, SIOR
mike.spencer@lee-associates.com
C 614.353.3852

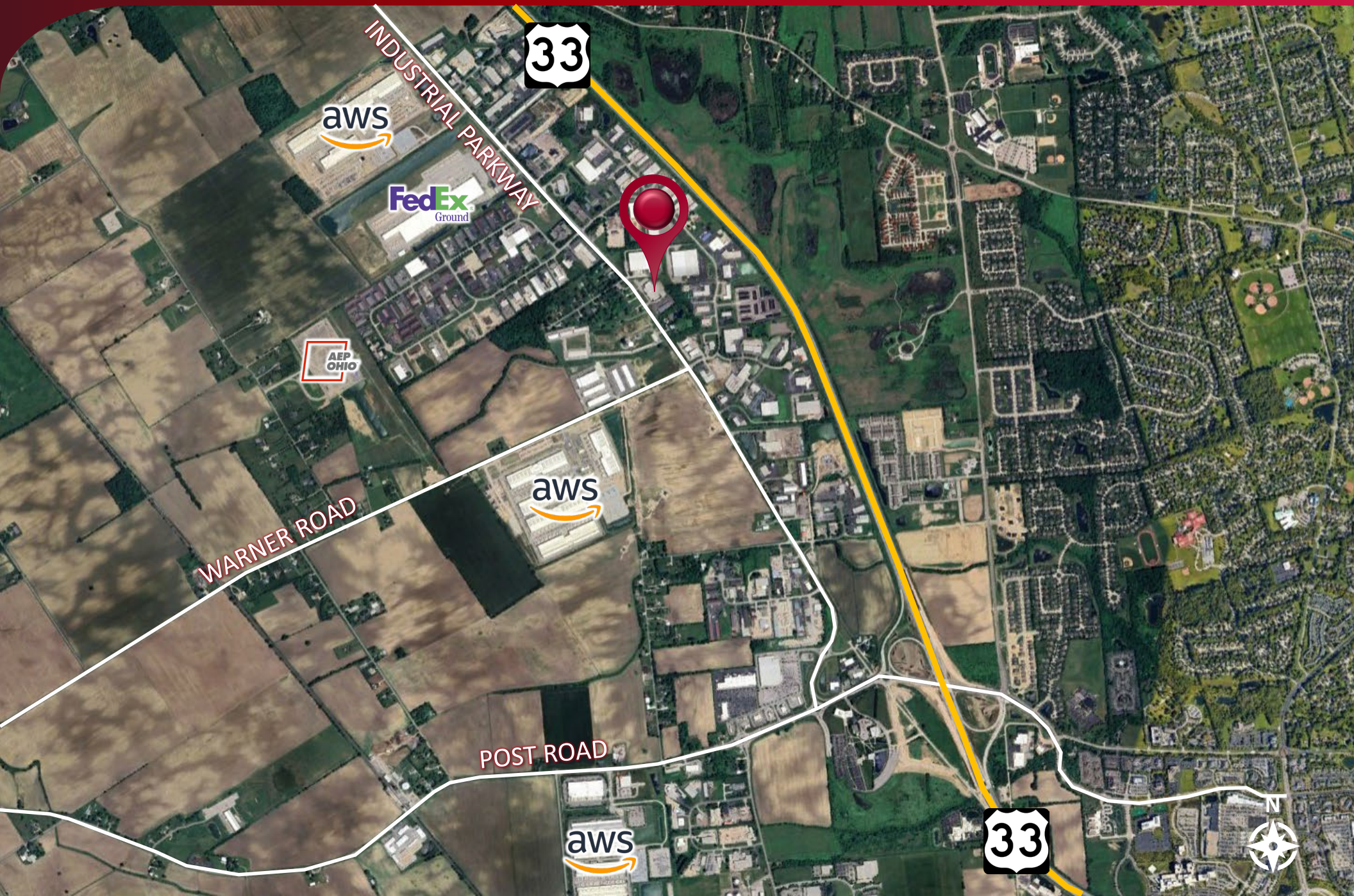
7858 INDUSTRIAL PARKWAY

51,500± SF INDUSTRIAL FOR LEASE



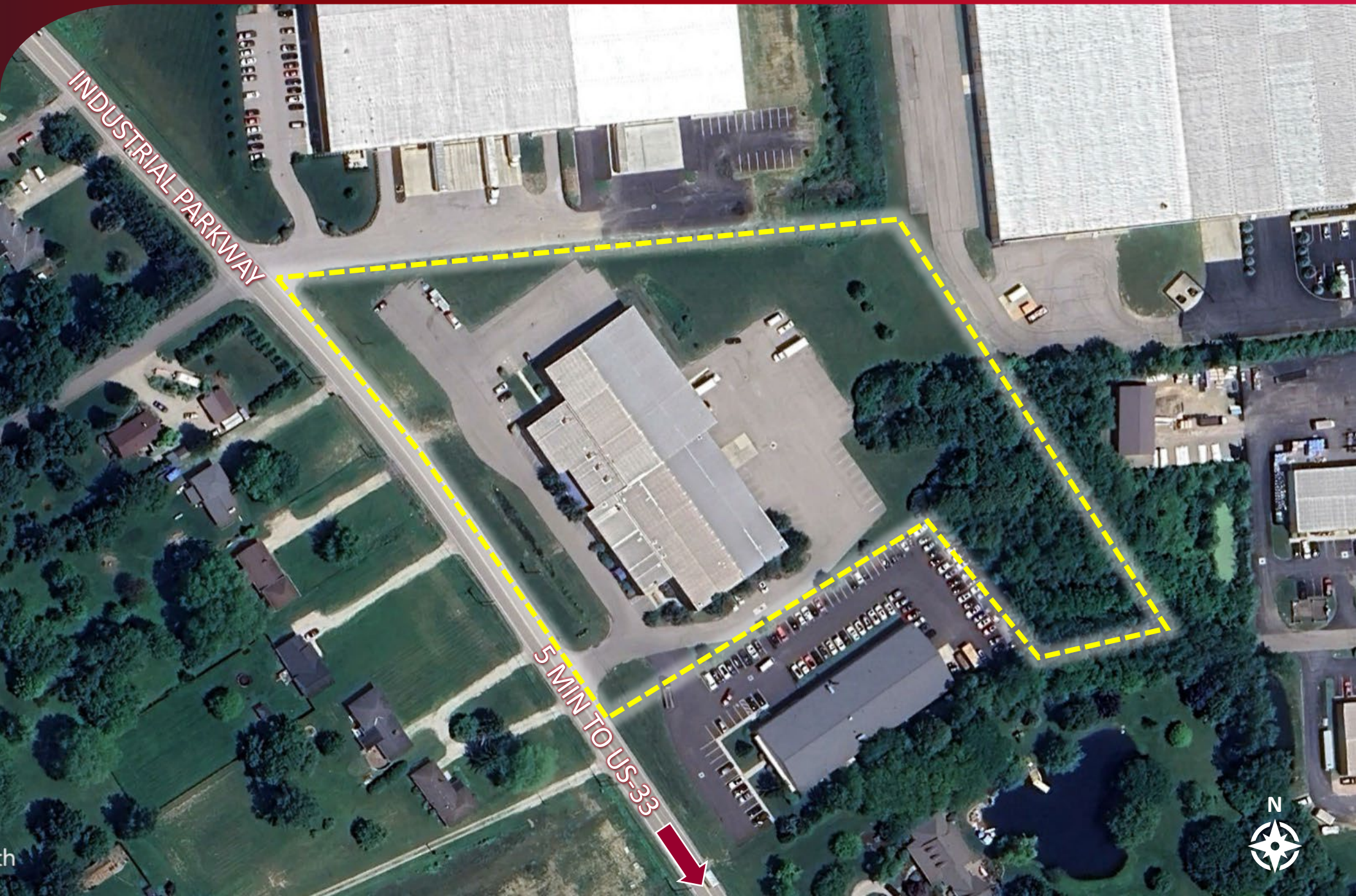
7858 INDUSTRIAL PARKWAY

51,500± SF INDUSTRIAL FOR LEASE



7858 INDUSTRIAL PARKWAY

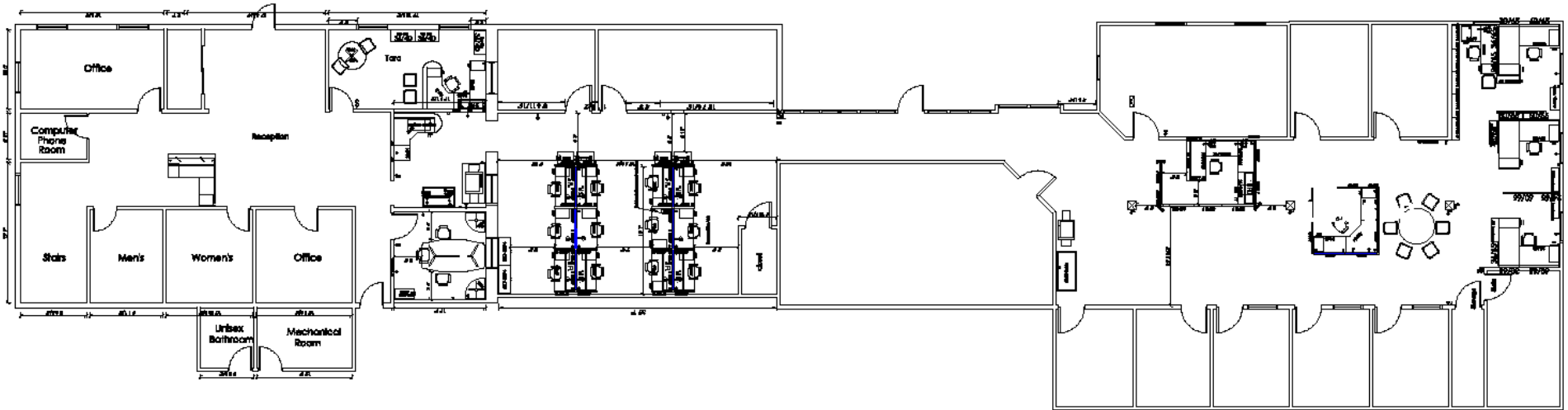
51,500± SF INDUSTRIAL FOR LEASE



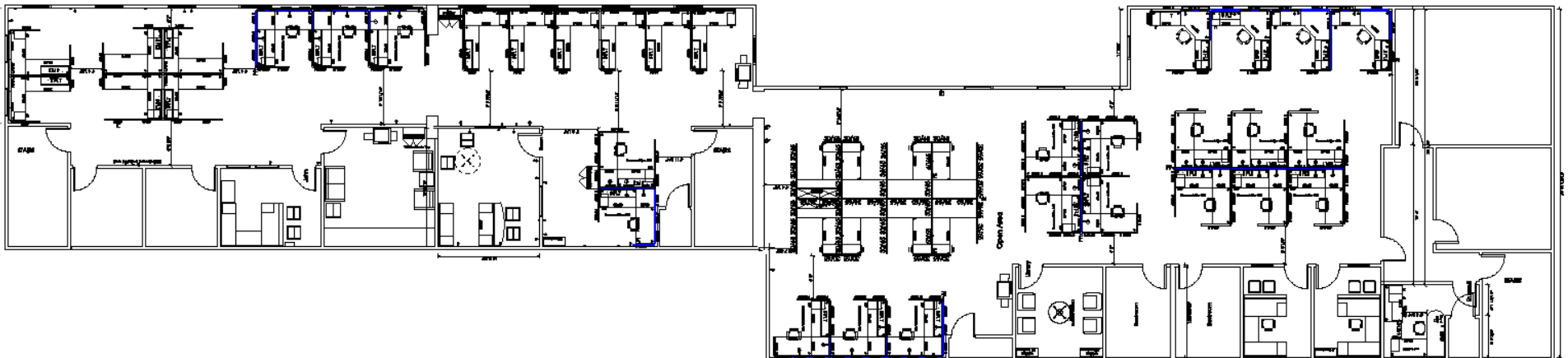
7858 INDUSTRIAL PARKWAY

51,500± SF INDUSTRIAL FOR LEASE

1st Floor Office – 8,650± SF



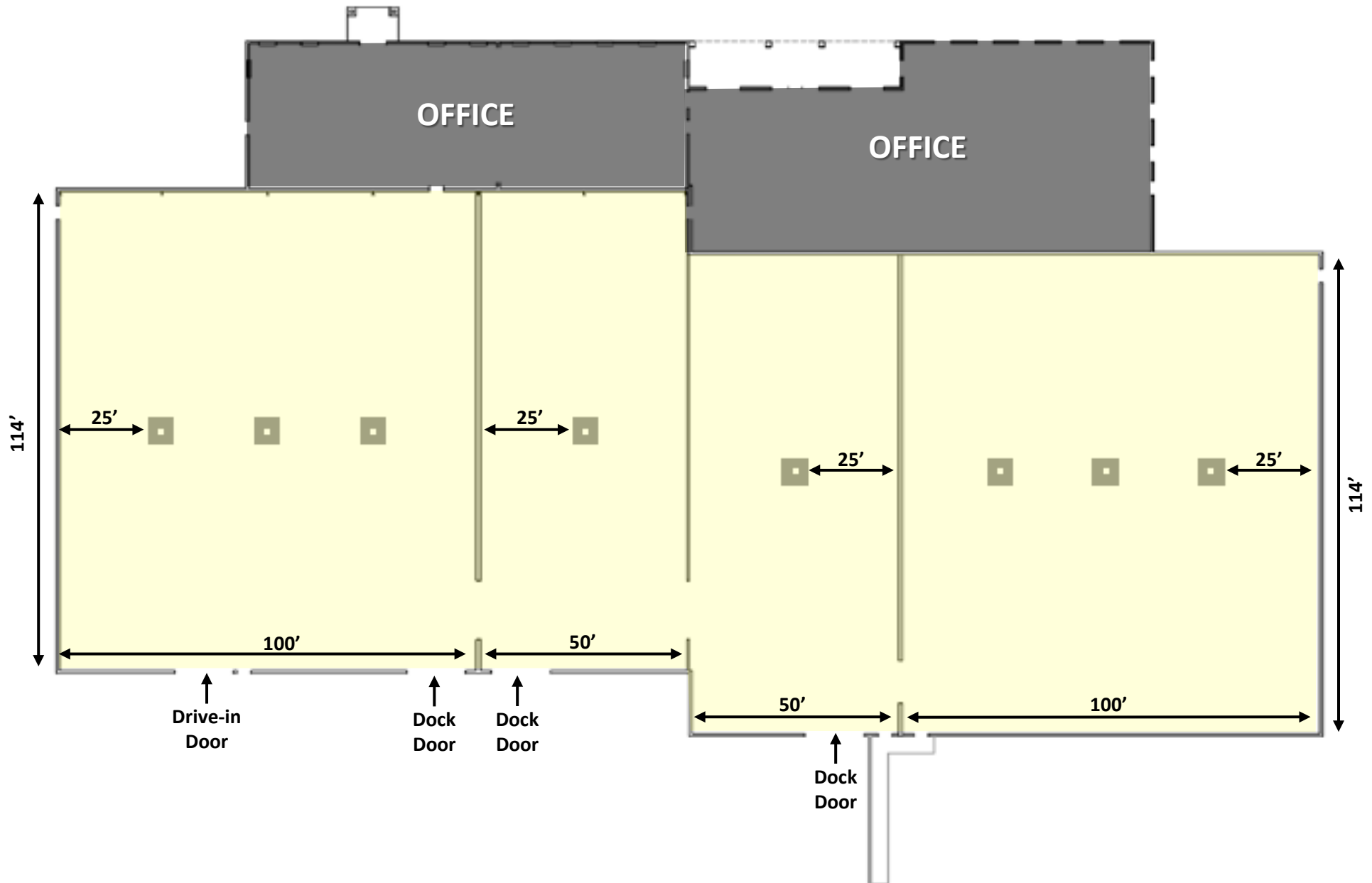
2nd Floor Office – 8,650± SF



7858 INDUSTRIAL PARKWAY

51,500± SF INDUSTRIAL FOR LEASE

Warehouse – 34,200± SF Total



7858 INDUSTRIAL PARKWAY

51,500± SF INDUSTRIAL FOR LEASE

Municipality Jerome Township

Address 7858 Industrial Parkway, Plain City, OH 43064

Total Building 51,500± SF

Site Size 6.33± acres

Year Built / Renovated 2000 & 2005 / 2020

Building Description Pre-Engineered Steel Frame

Office Improvements 17,300± SF - Two Story Office

Zoning Commerce District (COM)

Current Use Office / Warehouse Facility

Available Date Immediately

Floor Concrete slab on grade

Ceiling Height 24' minimum

Column Spacing 25' x 57'

Dock Doors 3

Drive-in Doors 1

Auto Parking Spaces 100

Union County PID 15-0028004.0030, 15-0028008.1000,
15-0028004.1000

Airport Access Ohio State University Airport (OSU) 9.5 Miles

John Glenn Intl (CMH) 24.9 Miles

Rickenbacker Intl (LCK) 31.6 Miles

Logistical Access US 33 via Industrial Pkwy & Post Rd

1.7 Miles to US 33

4.5 Miles to I-270 Columbus Outerbelt

13.2 Miles to I-71 North Side via I-270

12.8 Miles to I-70 West Side via I-270

19.8 Miles to Downtown Columbus

7858 INDUSTRIAL PARKWAY

51,500± SF INDUSTRIAL FOR LEASE

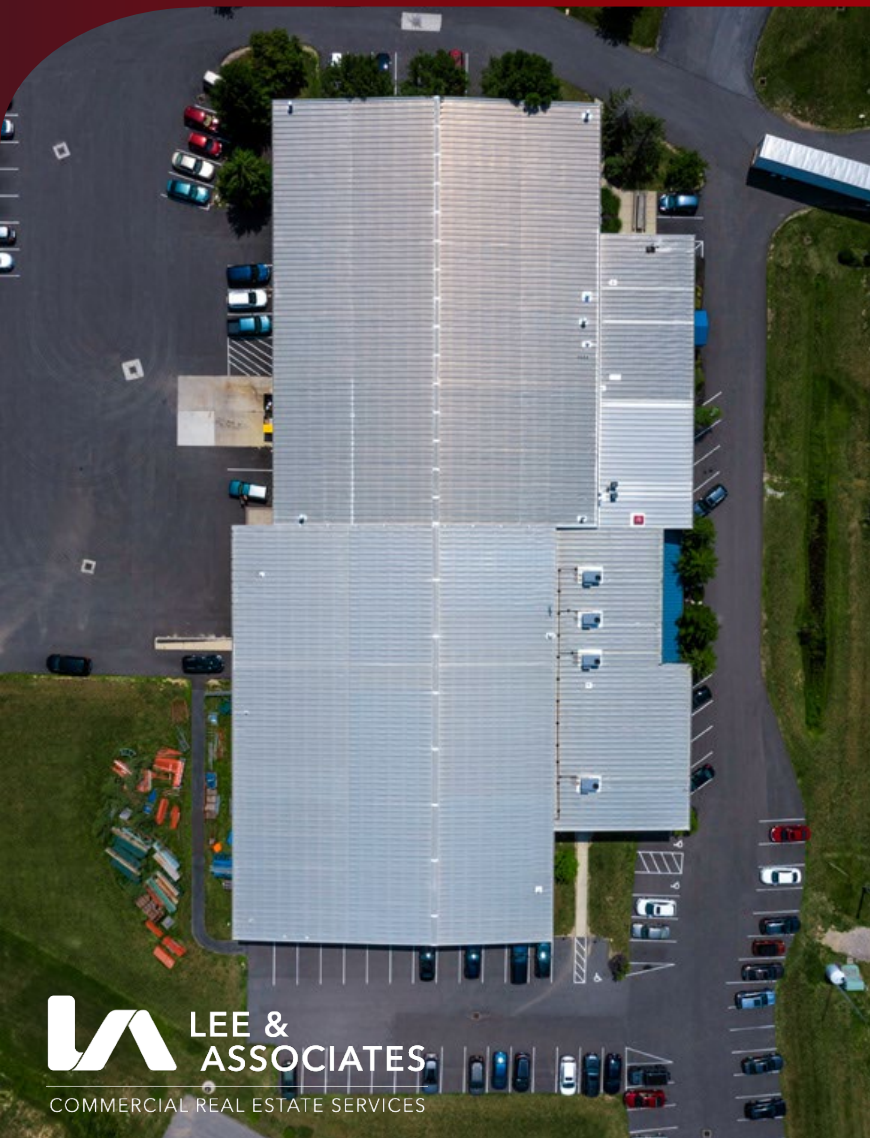


7858 INDUSTRIAL PARKWAY

PLAIN CITY, OH 43064

51,500± SF

INDUSTRIAL FOR LEASE



ALEX KUNIEGA
alex.kuniega@lee-associates.com
C 440.318.4078

MATT SMITH
matt.smith@lee-associates.com
C 419.450.4436

TODD SPENCER, SIOR, CCIM
todd.spencer@lee-associates.com
C 614.327.0258

MIKE SPENCER, SIOR
mike.spencer@lee-associates.com
C 614.353.3852