



SOUTHTREE
COMMERCIAL REAL ESTATE

MEDICAL OFFICE FOR LEASE

1233 HIGHWAY 54, FAYETTEVILLE, GEORGIA 30214



SPACE DETAILS

- 1,462 RSF Medical Office Suite
- Breakroom and Private Restroom
- Highly Visible to Highway 54
- Adjacent to Piedmont Fayette Hospital
- Surrounded by numerous Medical and Retail Tenants
- 2.5 miles to Trilith Studios
- 29 Minutes to Hartsfield Jackson Int. Airport
- Current Furniture, Fixtures and Equipment can be purchased

THIS INFORMATION HAS BEEN SECURED FROM SOURCES WE DEEM RELIABLE, BUT WE MAKE NO REPRESENTATIONS OR WARRANTIES, EXPRESSED OR IMPLIED AS TO THE ACCURACY OF THE INFORMATION.

BARRY GARNER
VICE PRESIDENT
770-294-4027
bgarner@stcom.us

SEAN RAWSON
VICE PRESIDENT
678-920-1222
srawson@stcom.us



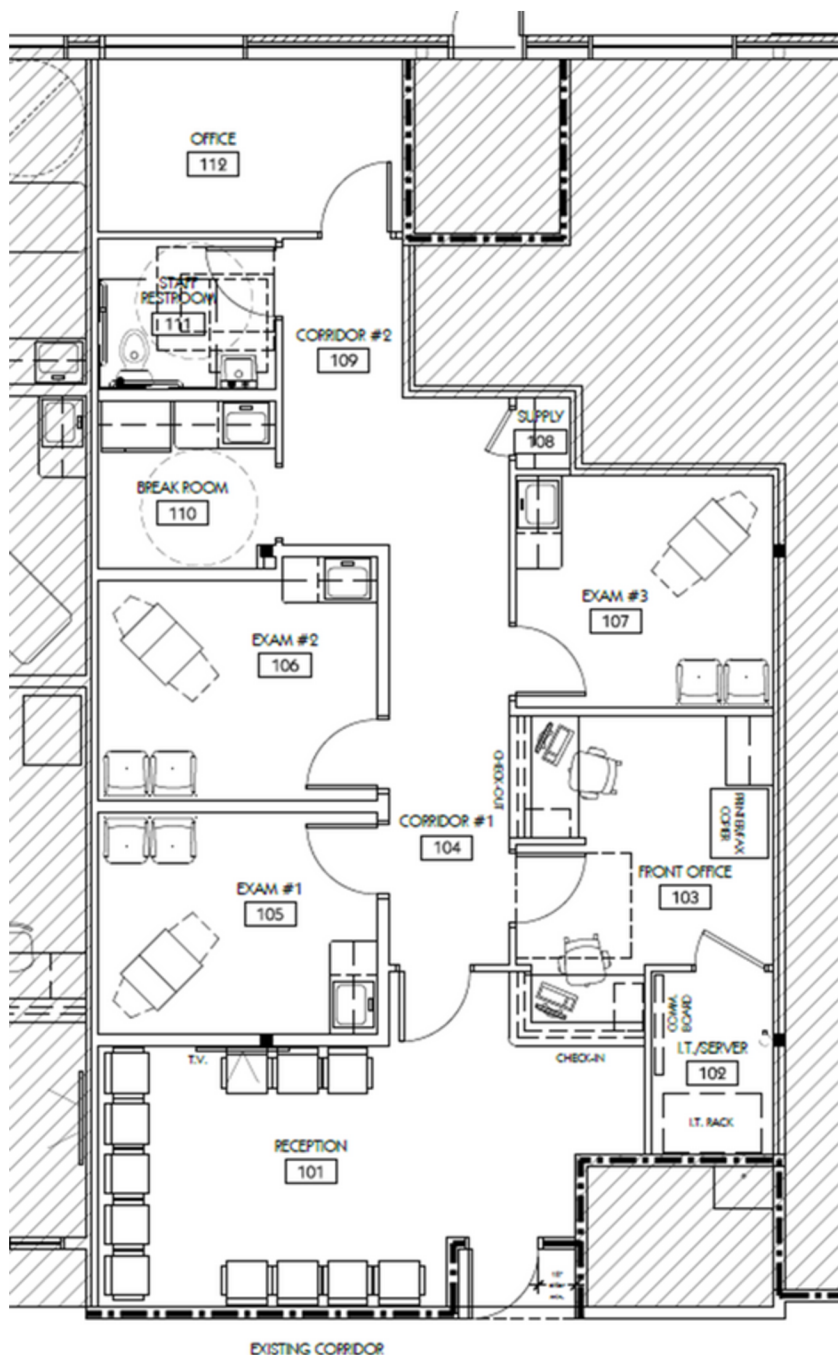
STCOM.US



770-631-0499



**201 PROSPECT PARK, SUITE A,
PEACHTREE CITY, GA 30269**



BARRY GARNER
VICE PRESIDENT
770-294-4027
bgarner@stcom.us

SEAN RAWSON
VICE PRESIDENT
678-920-1222
srawson@stcom.us



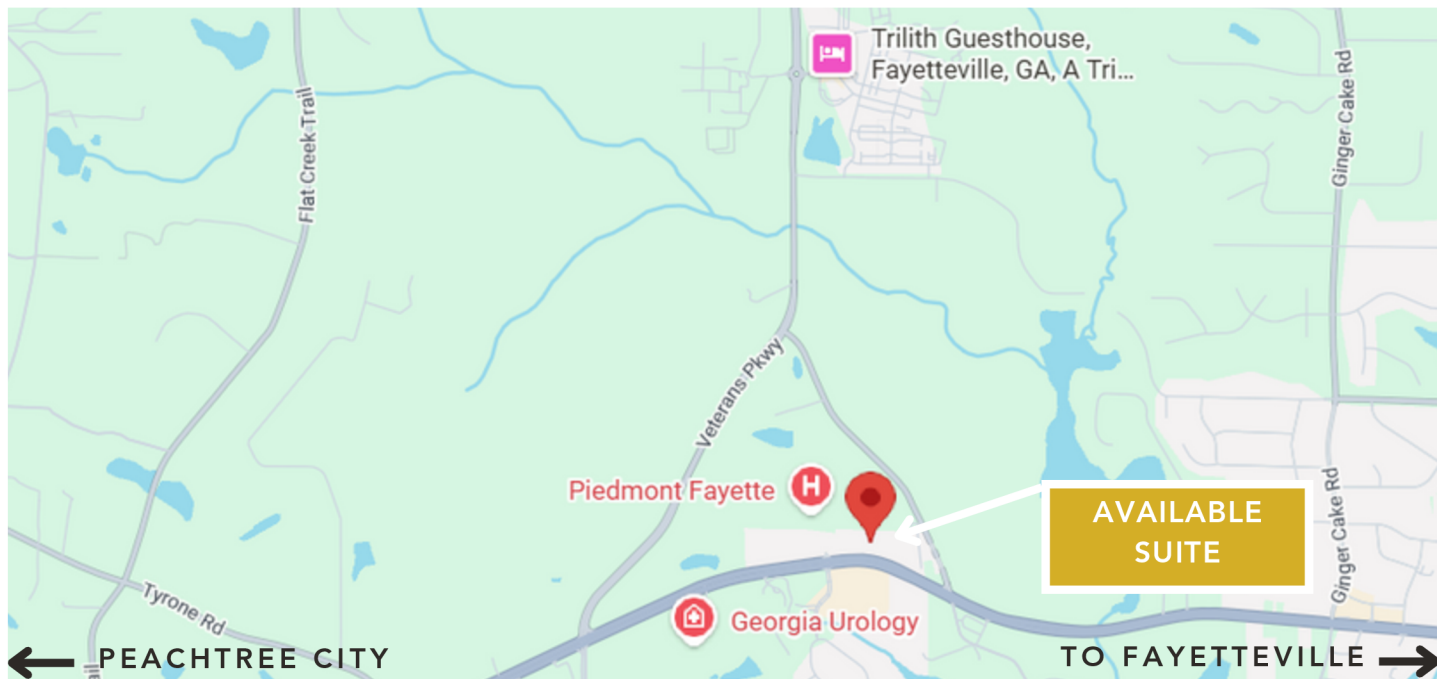
STCOM.US



770-631-0499



201 PROSPECT PARK, SUITE A,
PEACHTREE CITY, GA 30269



BARRY GARNER
VICE PRESIDENT
770-294-4027
bgarner@stcom.us

SEAN RAWSON
VICE PRESIDENT
678-920-1222
srawson@stcom.us

✉ **STCOM.US**
☎ **770-631-0499**
📍 **201 PROSPECT PARK, SUITE A,
PEACHTREE CITY, GA 30269**