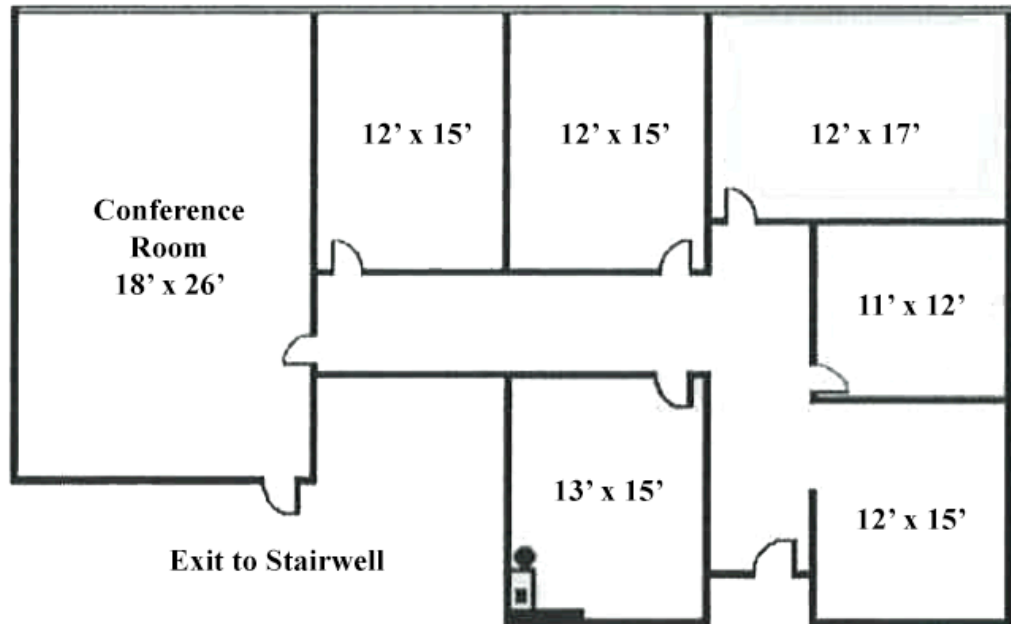


AVAILABLE FOR SUBLEASE

±2,263 SF Office Space Available

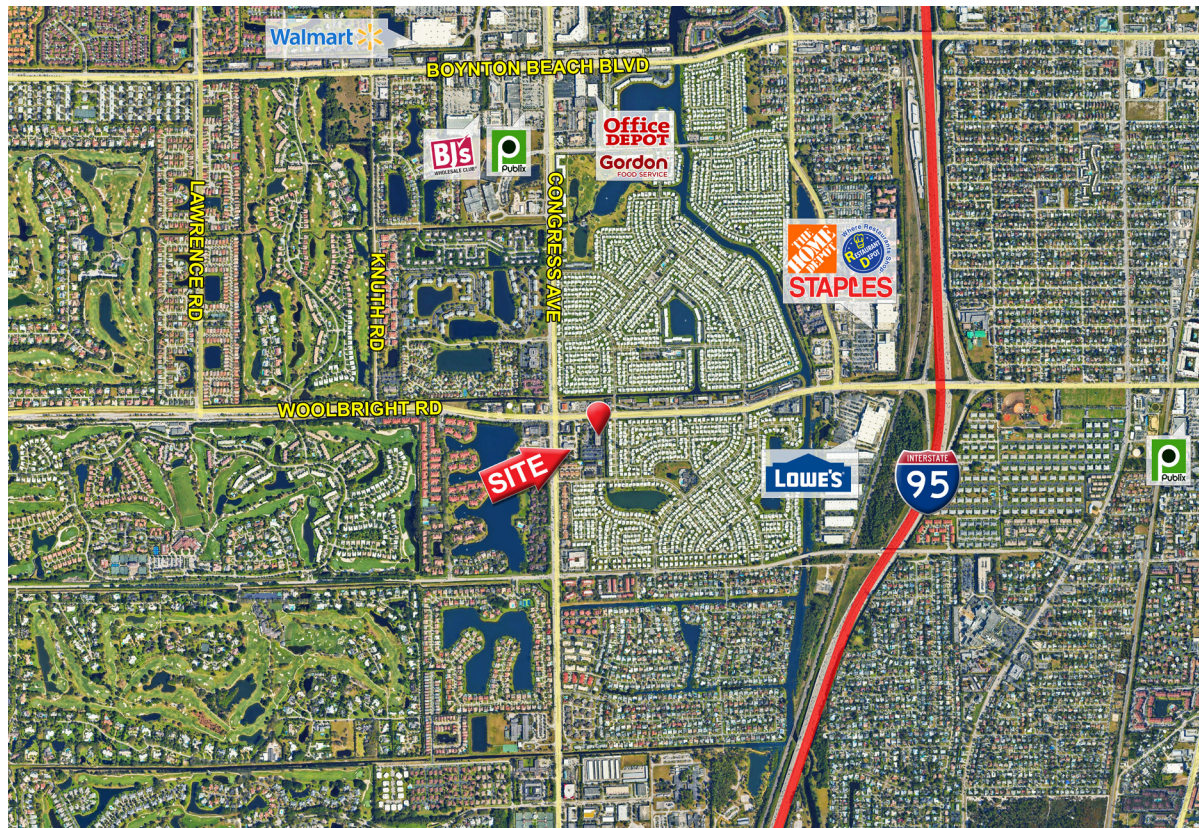
2240 W Woolbright Rd Boynton Beach, FL



- Less than a mile from I-95
- 4 assigned parking spaces, two covered
- 3rd floor office, attractive buildout
- Easy access
- Palm Beach International approx 15 minutes away

SEVELL REALTY PARTNERS

COMMERCIAL REAL ESTATE SERVICES



Traffic Counts: **Woolbright Rd** **46,500 - vpd**
 Congress Ave **39,500 - vpd**

DEMOGRAPHICS	1-MILE RANGE	3-MILE RANGE	5-MILE RANGE
POPULATION	14,007	108,944	250,640
MEDIAN AGE	52.0	49.0	50.0
AVG. HOUSEHOLD INCOME	\$96,885	\$97,658	\$99,192

FOR INFORMATION CALL 561-922-7100

Arnie Sevell
 arnoldsevell@sevellrealty.com

BROKER PARTICIPATION INVITED-CALL FOR DETAILS

Sevell Realty Partners, Inc.
 2585 NW 23RD WAY
 BOCA RATON, FLORIDA 33431-4014

LICENSED REAL ESTATE BROKER

NOTE: THIS OFFERING SUBJECT TO ERRORS, OMISSIONS, PRIOR SALE/LEASE OR WITHDRAWAL WITHOUT NOTICE

SEVELL REALTY PARTNERS

COMMERCIAL REAL ESTATE SERVICES