



MOORESVILLE

INDUSTRIAL PARK

25150 Will McComb Drive, Tanner, AL 35671

Project Overview

Mooresville Industrial Park
411,200 total square footage available

Limestone County, Alabama
Zoned Commercial/Industrial



- ◆ Huntsville (in city limits)
- ◆ Birmingham — 1.5 hours
- ◆ Nashville — 1.5 hours
- ◆ Atlanta — 3.5 hours
- ◆ Direct access to Interstate 65
- ◆ Close proximity to Tennessee River Waterway Ports

Strategic Location

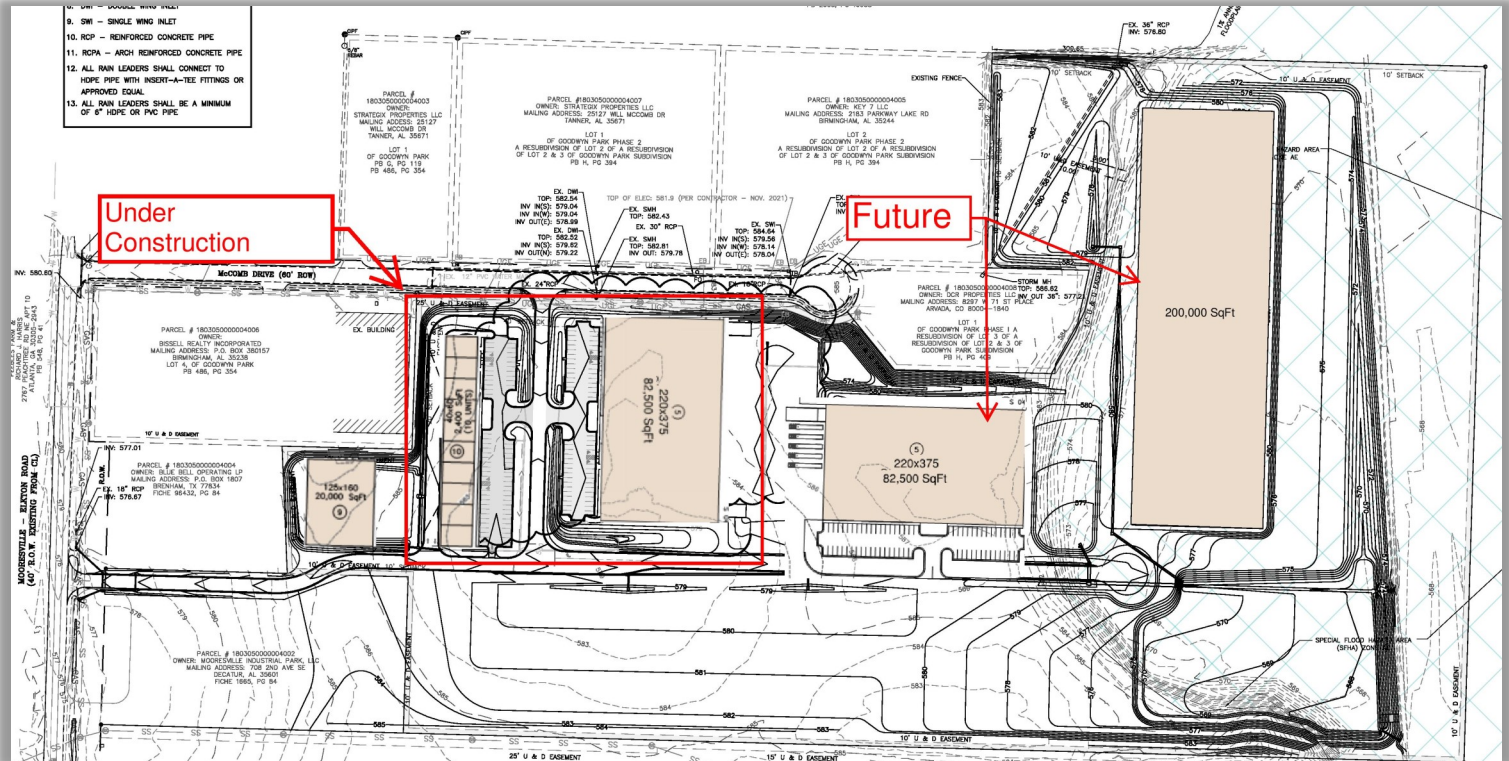
The Mooresville Industrial Park is strategically located in Limestone County, Alabama off Interstate 65, just north of Decatur. Limestone County is one of the fastest growing counties in Alabama, which is a right-to-work state. The region and the state offer resources and incentives to create a distinctly pro-business environment. The industrial park's location, available workforce, and local infrastructure offer competitive advantages to businesses in established and emerging industries.

The area draws its skilled labor force from several area community colleges, technical colleges, and universities, including Calhoun Community College and Robotics Technology Park located near to the property. Additionally, high school students have access to technical training programs within the county and surrounding school systems.



MOORESVILLE INDUSTRIAL PARK

25150 Will McComb Drive, Tanner, AL 35671



Property Available

SITE AMENITIES:

- ◆ Water
- ◆ Sewer
- ◆ Natural gas
- ◆ Close proximity to interstate
- ◆ Close proximity to waterway ports
- ◆ Will build to suit

Under construction:

- ⇒ Building 1 (220'x380') 83,600 SF available as one or two units
- ⇒ Building 10 - 10 units of 2,400 SF

Planned:

- ⇒ Building 2 (220'x910') 200,000 SF available as one or two units
- ⇒ Building 5 (220'x380') 83,600 SF available as one or two units
- ⇒ Building 9 (125'x160') 20,000 SF

NOW LEASING

Hardiman Properties Inc.
Joey G. Hardiman

615.210.5189



www.limestonebuildinggroup.com