

1215 South Pacific Coast Highway Redondo Beach, CA 90277




Kyle Degener Senior Vice President Kyle.Degener@colliers.com Direct: +1 310 321 1805	Lary Carlton Senior Vice President Lary.Carlton@colliers.com Direct: +1 562 547 8994	Amanda DePierro Senior Associate Amanda.DePierro@colliers.com Direct: +1 310 321 1817	Mike Talbot Sales Associate M.Talbotre@gmail.com Direct: +1 310 422 4309
--	--	---	--

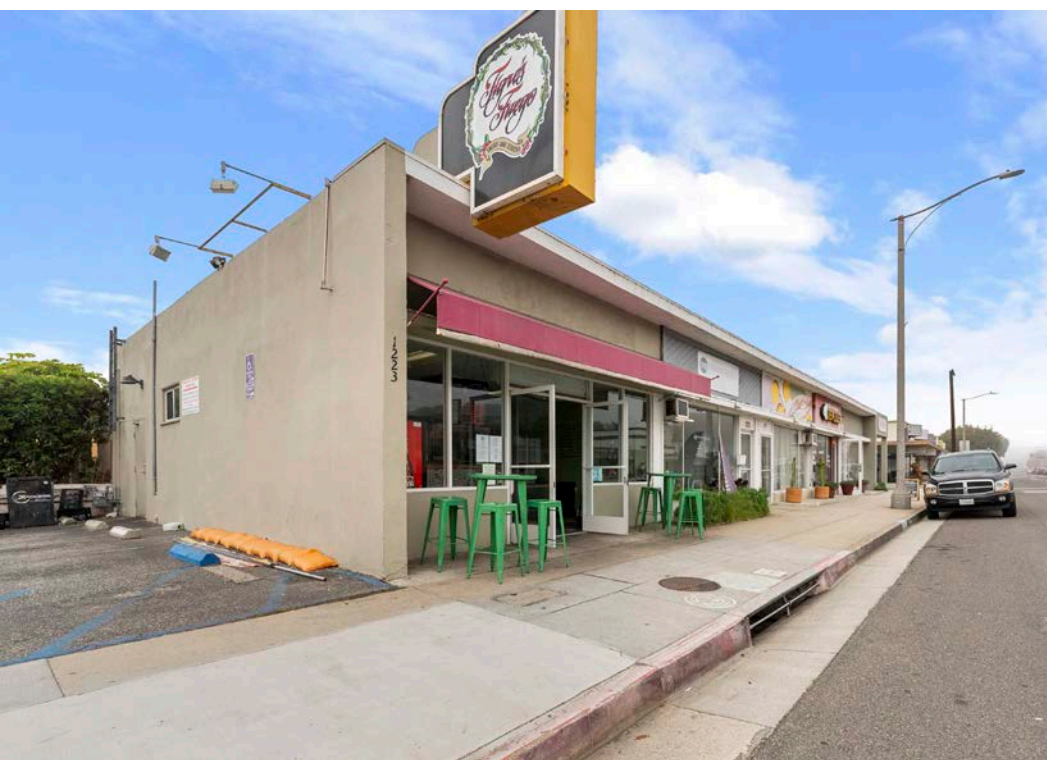
ESTATE
PROPERTIES



Table of Contents

Property Highlights	4
Investment Highlights	5
Property Photos	6
Floor Plan	8
Demographics	10





Property Highlights



6-Units Competitively Priced

- Regular Corner Lot
- 73 Feet of Frontage on Pacific Coast Highway
- High Visibility (30,000 Cars per Day)
- Strong Demographics with High Median Incomes
- International Tourist Destination
- Half a Mile away from the Beach
- Eight Miles from Los Angeles International Airport



Video

[Click Here](#)



Market Overview - *Well-Located in the South Bay*

The South Bay region of Los Angeles encompasses a mix of beach cities like Manhattan Beach, Hermosa Beach, and Redondo Beach, along with industrial areas such as Torrance and Carson. This coastal area is known for its relaxed lifestyle, offering a blend of suburban tranquility and easy access to the vibrant city of LA. The economy is diverse, with a strong focus on industries like aerospace, technology, healthcare, and retail. The area boasts a thriving tourism and hospitality sector, thanks to its beautiful beaches and high-end shopping areas. Real estate is a significant economic driver, with some of the highest property values in LA County. The South Bay is also home to a well-educated and affluent population, contributing to a high standard of living and strong local demand for services. There is a strong entrepreneurial spirit, with many small businesses and startups calling the area home.





Investment Highlights

Summary

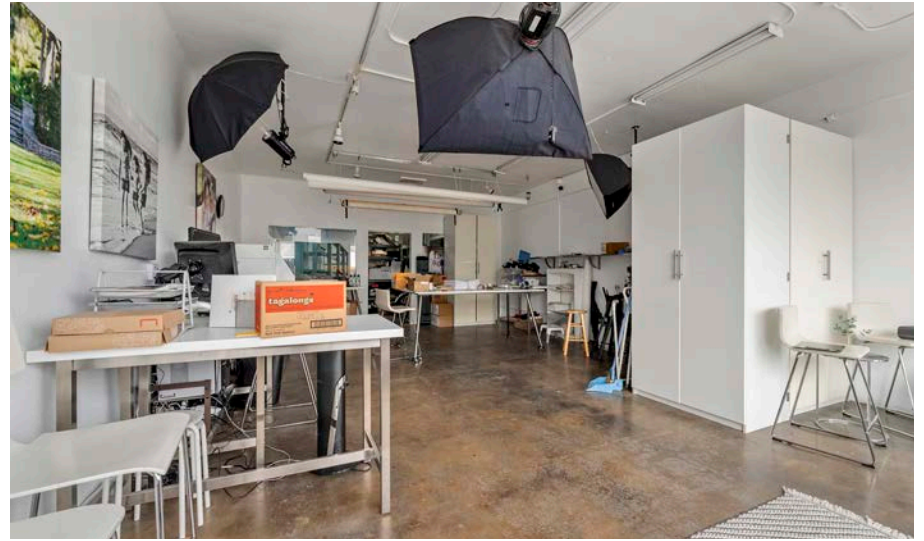
- Price: \$2,850,000
- Year Built: 1955
- Square Footage (Per Title): 4,098 SF
- Price PBSF: \$695.46
- Lot Size (SF): 6,033 SF
- Floors: 1
- Parking: 2:2:1000
- Zoning: RB C2-PD
- APN: 7511-003-035



Property Photos



Property Photos Continued



Floor Plan



1215 South Pacific Coast Highway

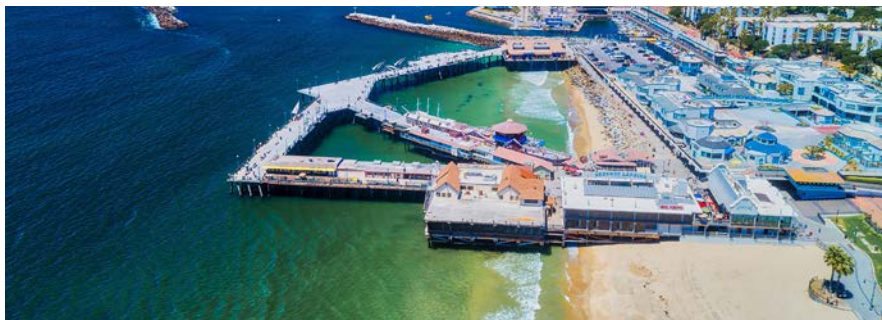
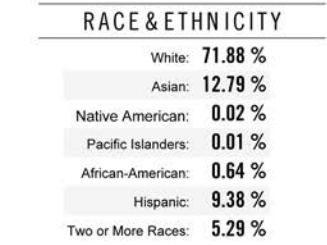
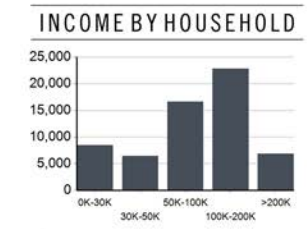
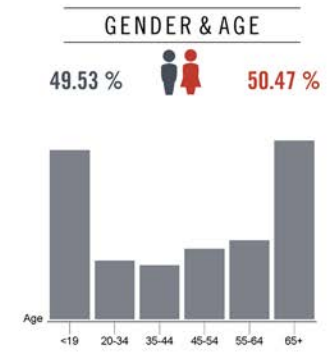
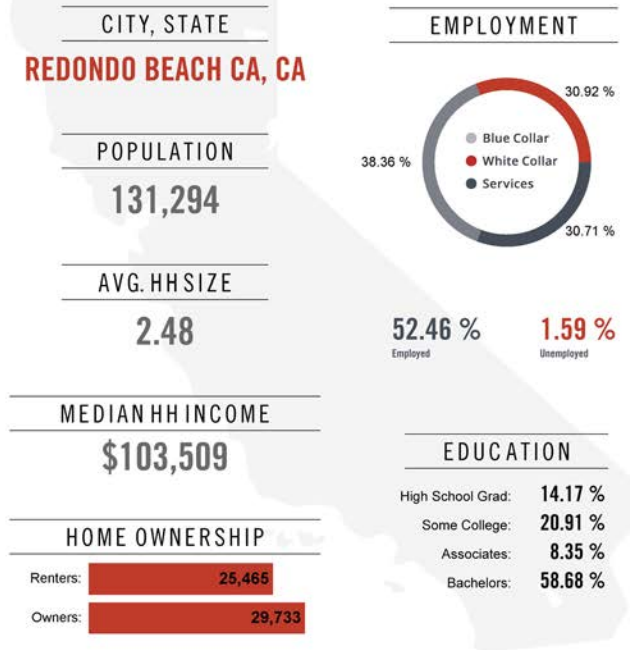
Redondo Beach, CA 90277



Demographics

Location Facts & Demographics

Demographics are determined by a 10 minute drive from 1215 S PACIFIC COAST HWY, REDONDO BEACH CA, CA 90277





BEST TAILOR
PHANNY'S
SNIP HAIR DESIGN

ST. ANDREW'S CHURCH

LA TERRAZA
OLHA HAIR DESIGN
SUNSET LEARNING

REDONDO BEACH FITNESS

1215 SOUTH PACIFIC COAST
HIGHWAY

BREAD, ESPRESSO, &
ISHABU SHABU
SUBHANNAHONG

FARMERS & MERCHANTS
BANK

JAPONICA
OCEAN MARKET
SOUTH BAY PIZZA
THE FOX DEN
UNICO

BANANA LEAF
BEACH CITIES SOCIAL
EL TARASCO
KURISAKI
LOTUS ASIAN GRILL
PEET'S COFFEE

CHINA COAST
MENSTAR BARBERSHOP
TEA TASTIC

CHEVRON
RIVIERA CAR WASH
SMART & FINAL

COPPER POT
RAW MANGO VEGAN



ESTATE
PROPERTIES

1215 South Pacific Coast Highway Redondo Beach, CA 90277

Kyle Degener

Senior Vice President

Kyle.Degener@colliers.com

Direct: +1 310 321 1805

Lary Carlton

Senior Vice President

Lary.Carlton@colliers.com

Direct: +1 562 547 8994

Amanda DePierro

Senior Associate

Amanda.DePierro@colliers.com

Direct: +1 310 321 1817

Mike Talbot

Sales Associate

M.Talbotre@gmail.com

Direct: +1 310 422 4309



2141 Rosecrans Avenue
Suite 1120
El Segundo, CA 90245

ESTATE
PROPERTIES

63 Malaga Cove Plaza
Palos Verdes, CA
90274

