



**FOR SALE OR LEASE**

# **2nd GENERATION RESTAURANT**





**507 S Bickett Blvd | Louisburg, NC 27549**

**TSCG**

# PROPERTY HIGHLIGHTS

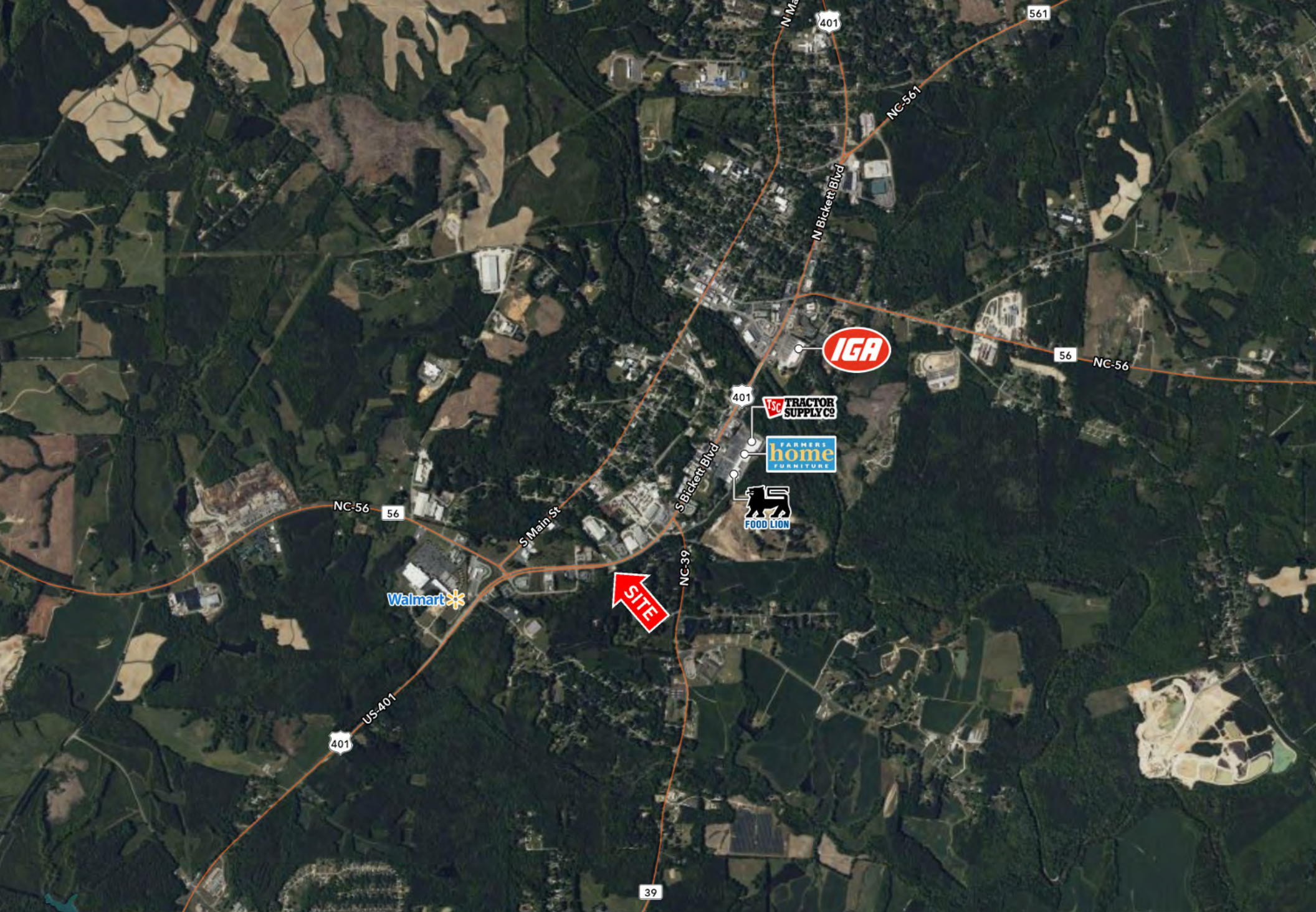
- NEW 2024 construction
- 1,482 SF 2nd Generation Restaurant Building with Drive-Thru on 1.14 AC
- Available: Now
- For pricing contact broker for details
- Access into subject is Left and Right in and Right out
- Parking: 10 designated spaces with 1 of them having handicap accessibility
- Nearby Tenants: Walmart Supercenter, Tractor Supply, Bojangles, Cook-Out, Zaxby's, McDonald's and Domino's Pizza
- Traffic Counts: S Bickett Blvd - 19,000 AADT

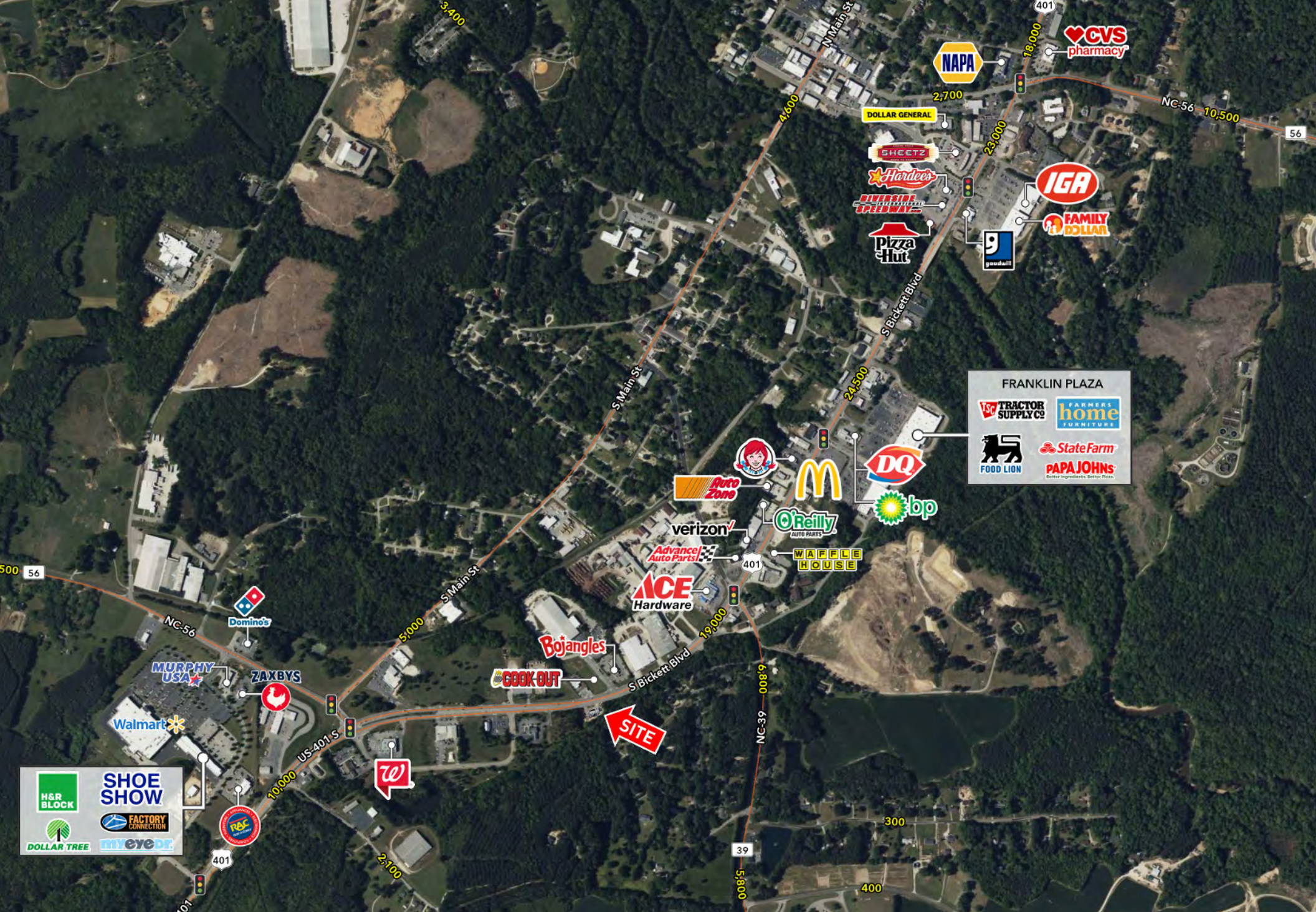
# DEMOGRAPHICS

	1 MILE	3 MILES	5 MILES
 2024 Population	1,452	5,928	9,755
 2024 Daytime Population	2,700	9,249	11,820
 2024 Average HH Income	\$72,208	\$77,280	\$82,573
 2024 Households	631	2,141	3,647



**FOR SALE OR LEASE**







BOBBEES BOTTLING

H&M WOODWORKS

Bojangles

COOK OUT

First National Bank

LOUISBURG ARMORY

401

S Bickett Blvd

19,000

401

SITE

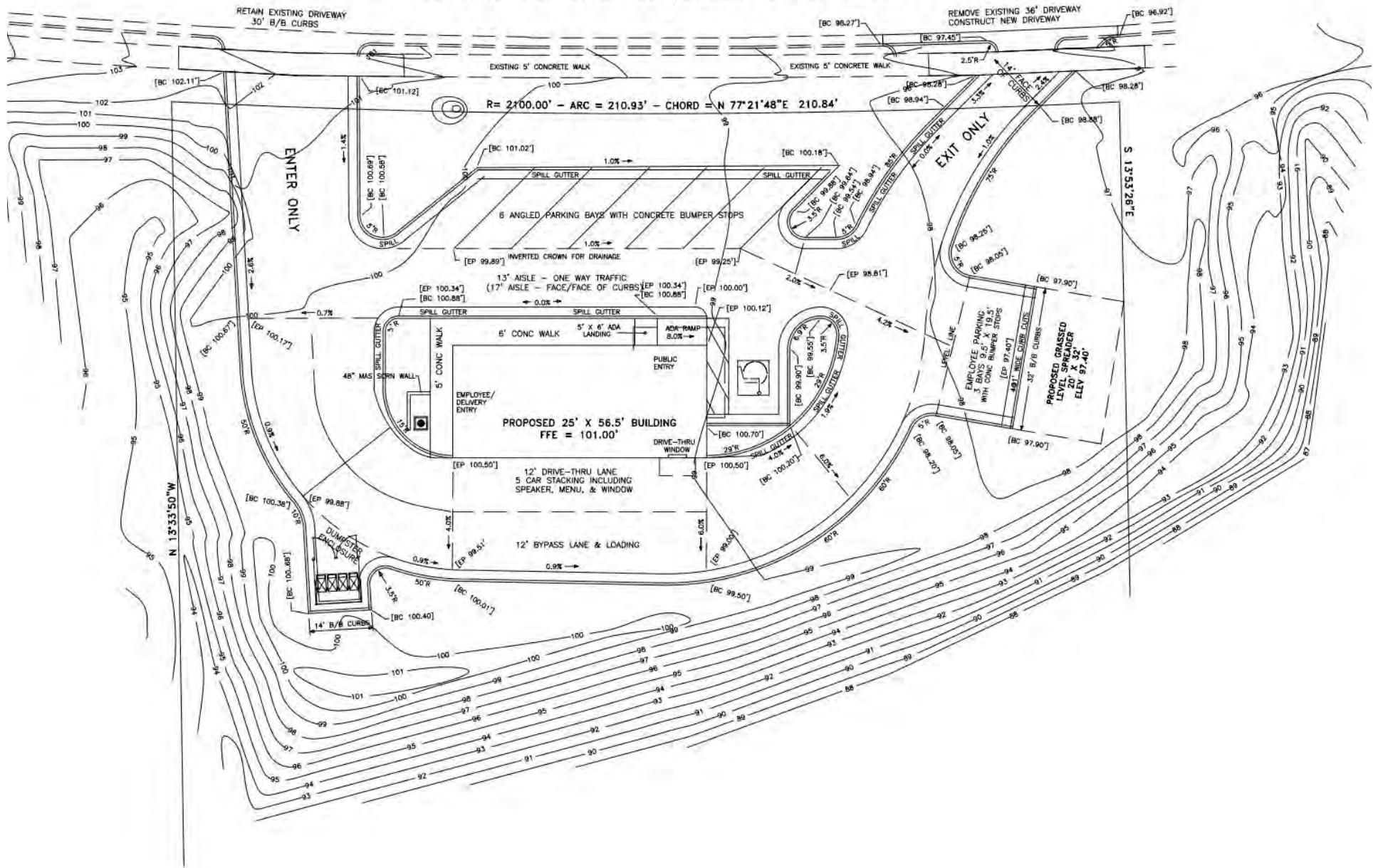
TRUIST

Burke Blvd

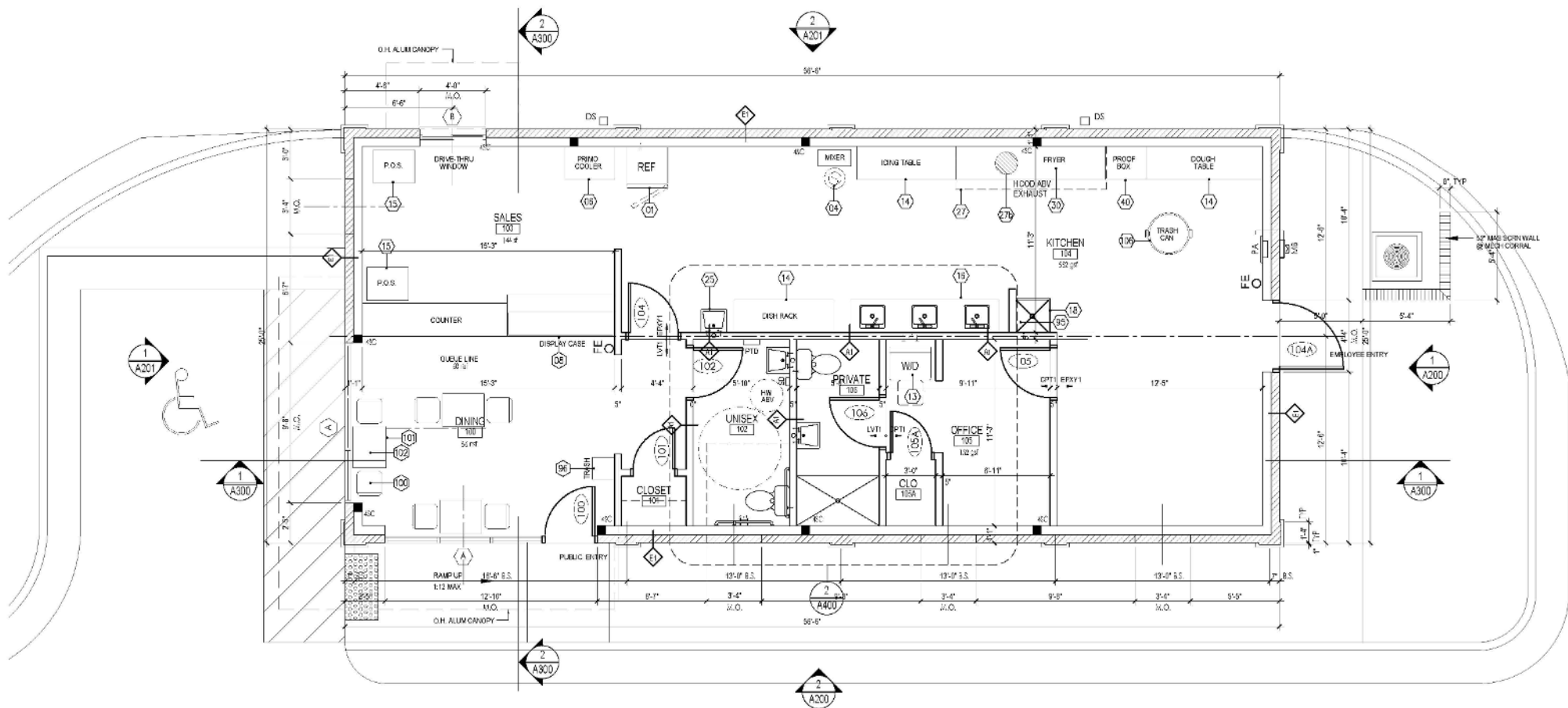
Hill Pl

# SURVEY PLAN

BICKETT BOULEVARD – US HWY 401 & NC HWY 56 – 66' B/B CURBS – 4 LANES WITH CENTER TURN LANE



# FLOOR PLAN





## EXCLUSIVE LEASING AGENTS



**TYLER QUINN**  
tyler.quinn@tscg.com  
336.209.7571

**TAYLOR DROUILLARD**  
taylor.drouillard@tscg.com  
984.960.3164

**JACOB MULL**  
jacob.mull@tscg.com  
984.221.8518