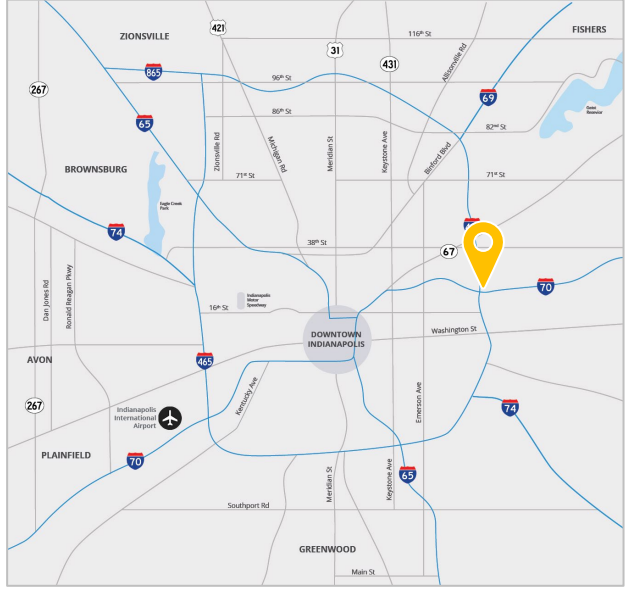


**FOR LEASE**  
**8716 - 8768 E 33<sup>rd</sup> Street**  
 Indianapolis, IN

# Jackson Industrial Park – Building 6

**Property Highlights:**

- Total building: 43,200 SF
- Available spaces from 1,600 SF – 7,200 SF
- Located near the corner of 33<sup>rd</sup> Street and Post Road on the Indianapolis near east side with access to many nearby amenities
- Dock + Drive-in loading
- Sits along the IndyGo bus route
- 15' clear height
- Conveniently located near to I-465 and I-70
- Zoned I-2
- Ample double-row parking
- Strong labor pool
- **Under new management and ownership**

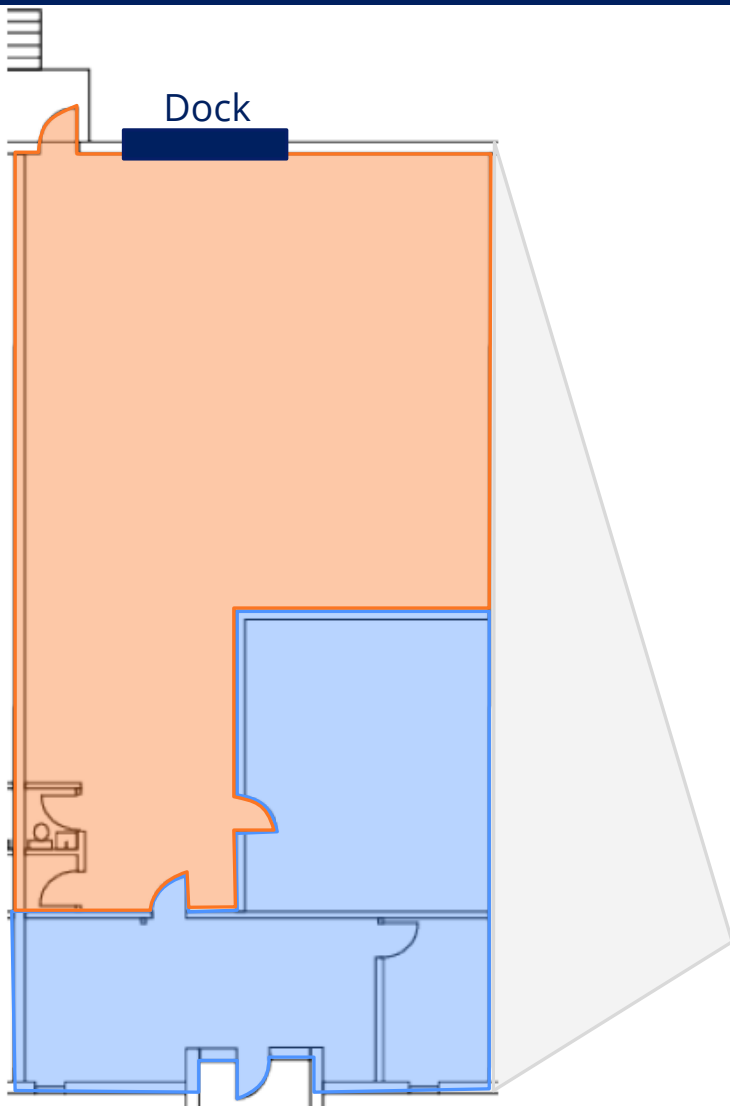


**Tony Hupp**  
 +1 317 713 2116  
[tony.hupp@colliers.com](mailto:tony.hupp@colliers.com)

**Ryan Kelly**  
 +1 317 713 2118  
[ryan.kelly@colliers.com](mailto:ryan.kelly@colliers.com)

Owned By:  
**CenterSquare**

Colliers Indianapolis  
[colliers.com](http://colliers.com)

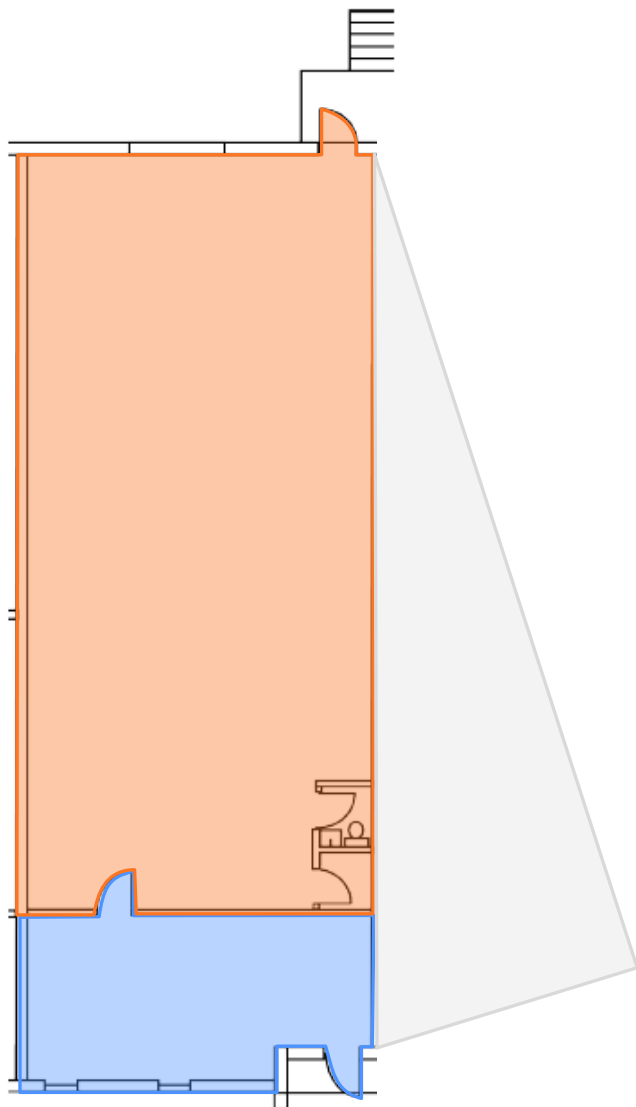


# Building 6

8760 E 33<sup>rd</sup> Street  
Jackson Industrial Park

- ± 3,200 SF Total
- ± 2,555 SF Warehouse
- ± 945 SF Office
- 1 Dock door
- 15' Clear Height
- \$9.00 / SF NNN
- \$2.50 / SF OpEx

 Office Area  
 Warehouse Area

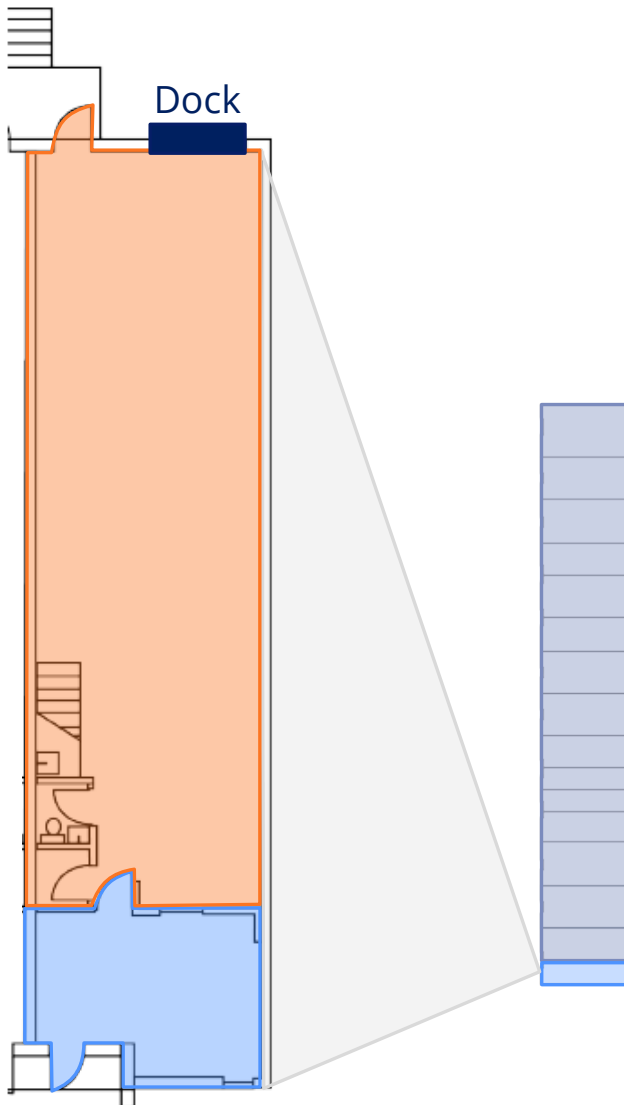


# Building 6

8764 E 33<sup>rd</sup> Street  
Jackson Industrial Park

- ± 2,400 SF Total
- ± 1,950 SF Warehouse
- ± 450 SF Office
- 1 Dock door
- 15' Clear Height
- \$9.00 / SF NNN
- \$2.50 / SF OpEx

 Office Area  
 Warehouse Area

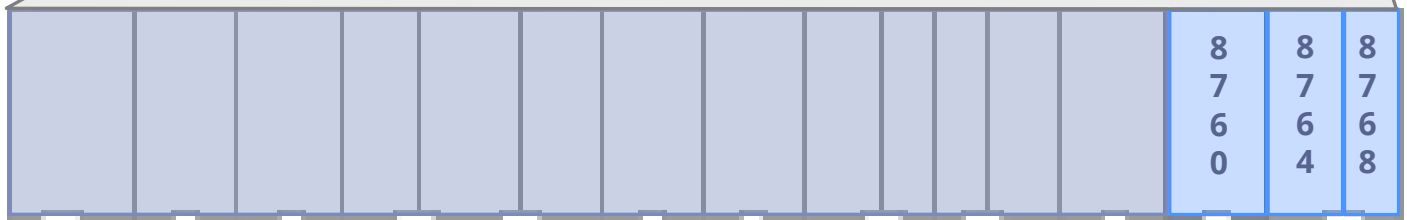


## Building 6 8768 E 33<sup>rd</sup> Street Jackson Industrial Park

- ± 1,600 SF Total
- ± 1,300 SF Warehouse
- ± 300 SF Office
- 1 Dock door
- 15' Clear Height
- \$9.00 / SF NNN
- \$2.50 / SF OpEx

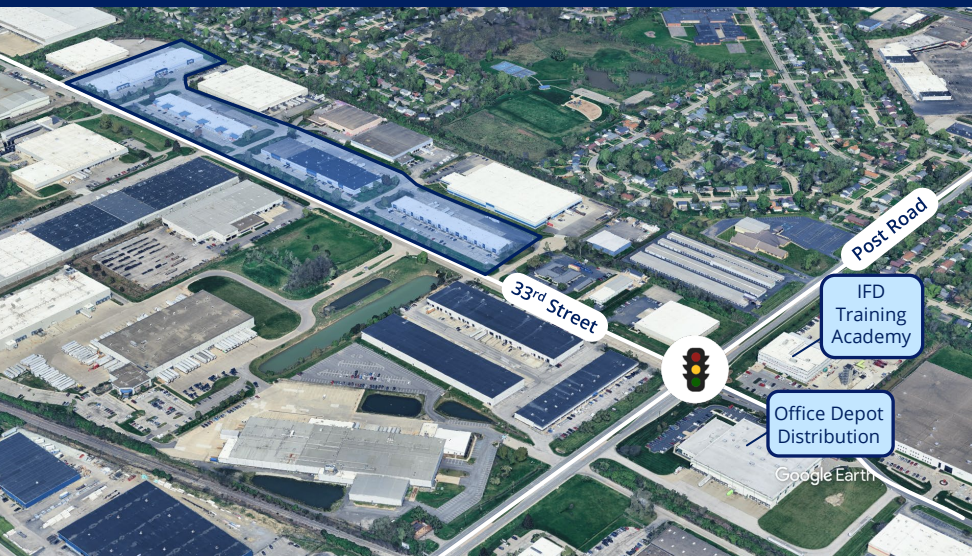
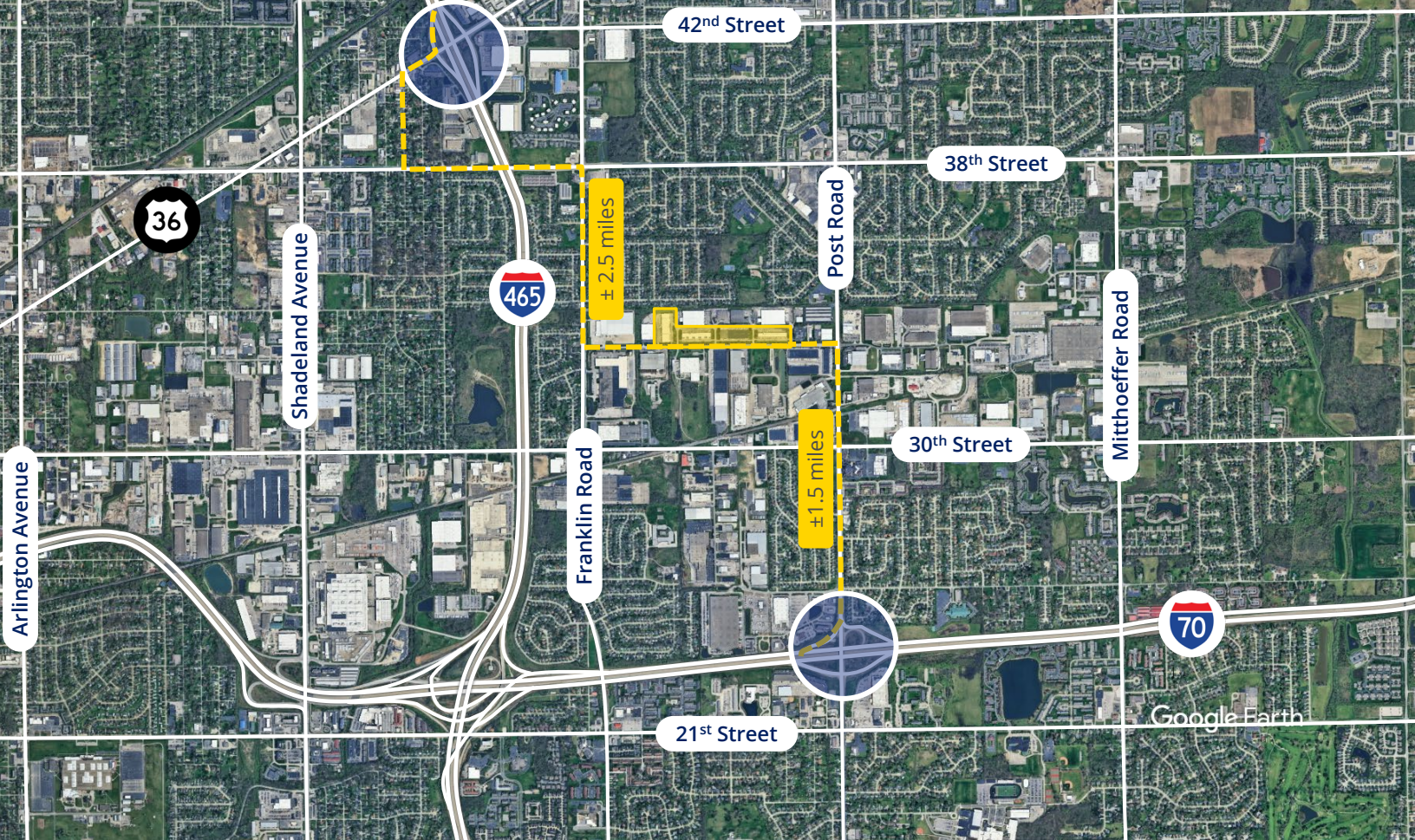
 Office Area

 Warehouse Area



**LEASE AVAILABILITY**

Suite	Available SF	Office SF	Clear Height	Docks	Drive-ins	Rate PSF (NNN)	OpEx	Features
8760	± 3,200	± 640	15'	1	0	\$9.00	\$2.50	• Can be combined with adjacent unit(s)
8764	± 2,400	± 450	15'	1	0	\$9.00	\$2.50	• Can be combined with adjacent unit(s)
8768	± 1,600	± 300	15'	1	0	\$9.50	\$2.50	• Can be combined with adjacent unit(s)
8760 - 8768	± 7,200	± 1,390	15'	3	0	\$8.50	\$2.50	• 3 combined units
8760 - 8764	± 5,600	± 1,090	15'	2	0	\$8.75	\$2.50	• 2 combined units
8764 - 8768	± 4,000	± 750	15'	2	0	\$9.00	\$2.50	• 2 combined units



### DRIVING DISTANCE

Downtown Indianapolis	± 11.2 miles
Carmel, IN	± 15.1 miles
Greenfield, IN	± 17.6 miles
Greenwood, IN	± 18.2 miles
Indianapolis Airport	± 24.3 miles
Brownsburg, IN	± 32.1 miles
Cincinnati, OH	± 109 miles
Louisville, KY	± 120 miles
Chicago, IL	± 190 miles
Detroit, MI	± 279 miles

