



1001 KEYS DRIVE

SUBURBAN OFFICE SPACE FOR LEASE

SITE #1469 | GREENVILLE, SC 29615

CBRE

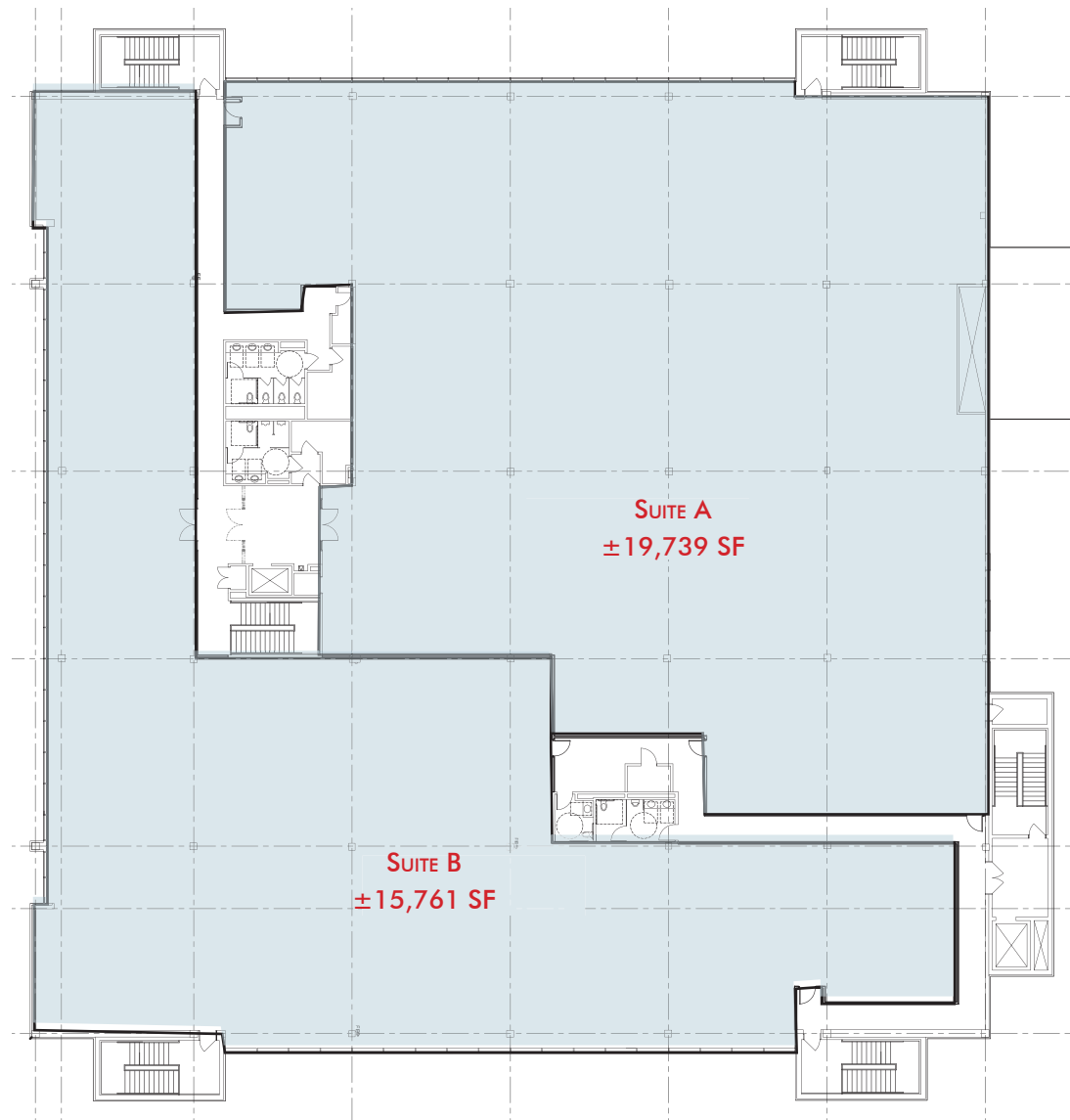
SPACE OPPORTUNITIES SECOND FLOOR

TOTAL AVAILABLE | $\pm 15,761$ - $\pm 35,500$ RSF

AVAILABILITIES:

SUITE A | $\pm 19,739$ RSF

SUITE B | $\pm 15,761$ RSF





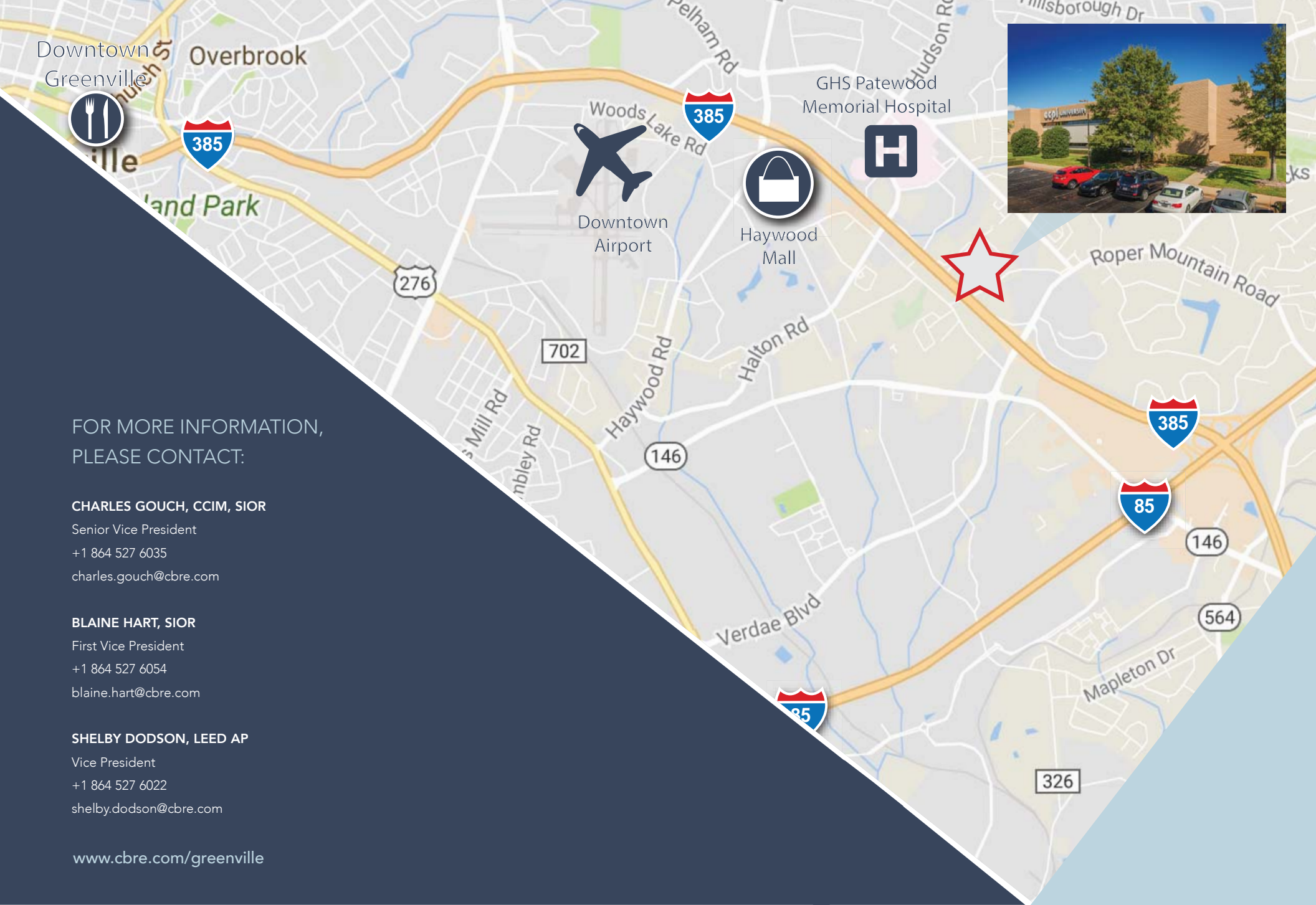
PROPERTY DETAILS

SUBURBAN OFFICE FOR LEASE

1001 Keys Drive is conveniently located off of Frontage Road in close proximity to Haywood Road with easy access to I-385 and I-85. The property is also a short drive to Downtown Greenville.

- | | |
|------------------------|---------------------------------|
| + Total RSF Available: | Up to ±35,500 SF Second Floor |
| - Suite A: | ±19,739 RSF |
| - Suite B: | ±15,761 RSF |
| + Parking: | Ample On-site |
| + Lease Rate: | Contact Agent |
| + Amenities: | Conferencing Center |





Downtown Greenville Overbrook



Downtown Airport

Haywood Mall

GHS Patewood Memorial Hospital



Roper Mountain Road



146

564

326

FOR MORE INFORMATION,
PLEASE CONTACT:

CHARLES GOUCH, CCIM, SIOR

Senior Vice President
+1 864 527 6035
charles.gouch@cbre.com

BLAINE HART, SIOR

First Vice President
+1 864 527 6054
blaine.hart@cbre.com

SHELBY DODSON, LEED AP

Vice President
+1 864 527 6022
shelby.dodson@cbre.com

www.cbre.com/greenville