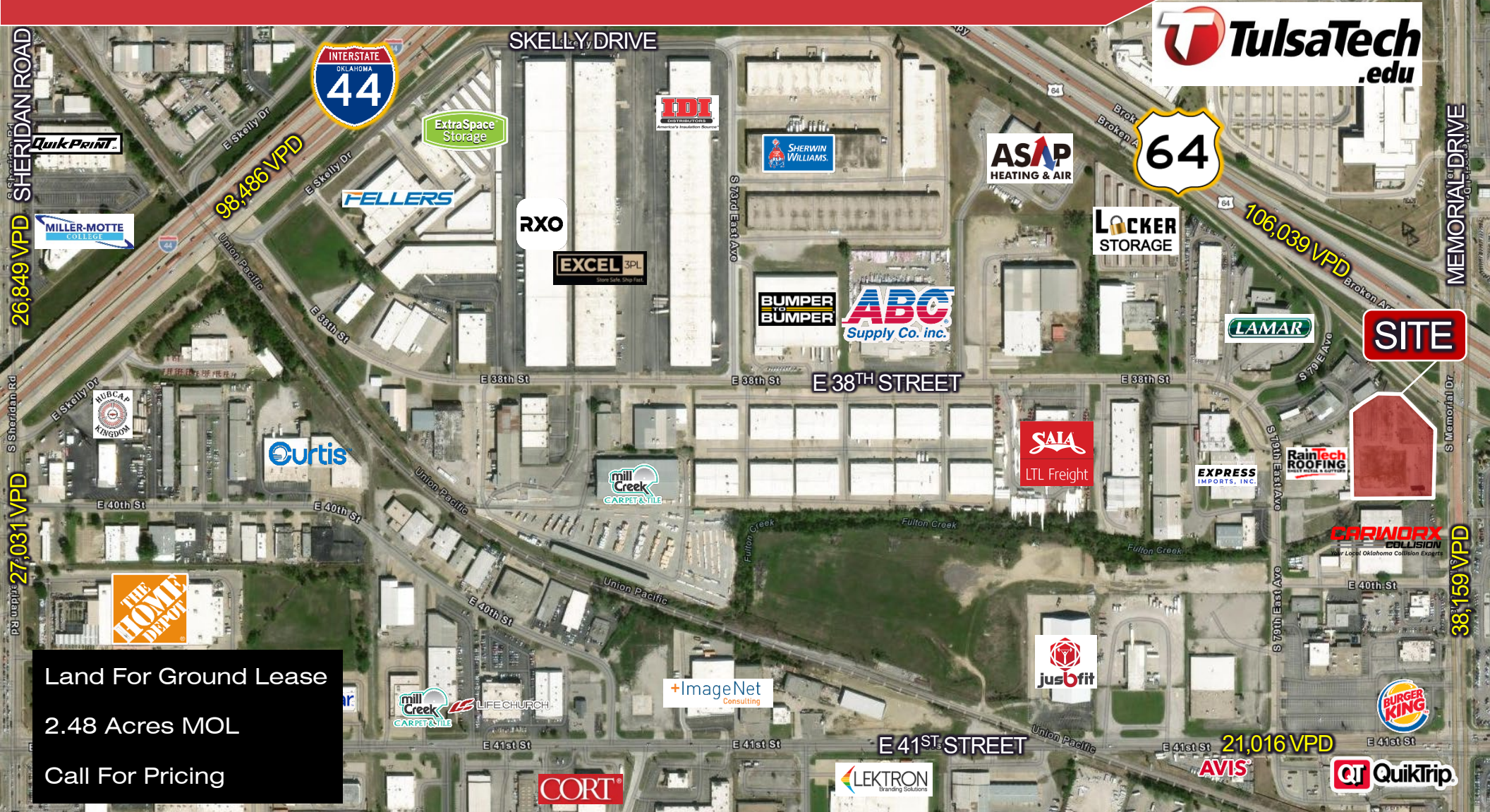


3900 S. MEMORIAL DRIVE
TULSA, OK 74145



Land For Ground Lease
2.48 Acres MOL
Call For Pricing



NAIRED COMMERCIAL REAL ESTATE
405.840.0600 | NAIRED.COM

DAVID HARTNACK
405.761.8955
DAVID@NAIRED.COM

SAM SWANSON
405.208.2046
SAM@NAIRED.COM

HENRY JACKSON
405.240.4946
HENRY@NAIRED.COM



PROPERTY OVERVIEW

LOT SIZE 2.48 ACRES +/-

ZONING COMMERCIAL

- Fronting the Broken Arrow Expressway (Highway 64)
- Hard Corner
- 10 Auto Dealerships with 0.50 Miles

DEMOGRAPHICS



POPULATION
 1 MILE: 6,298
 3 MILES: 96,224
 5 MILES: 259,045



AVERAGE HOUSEHOLD INCOME
 1 MILE: \$70,059
 3 MILES: \$70,787
 5 MILES: \$84,152

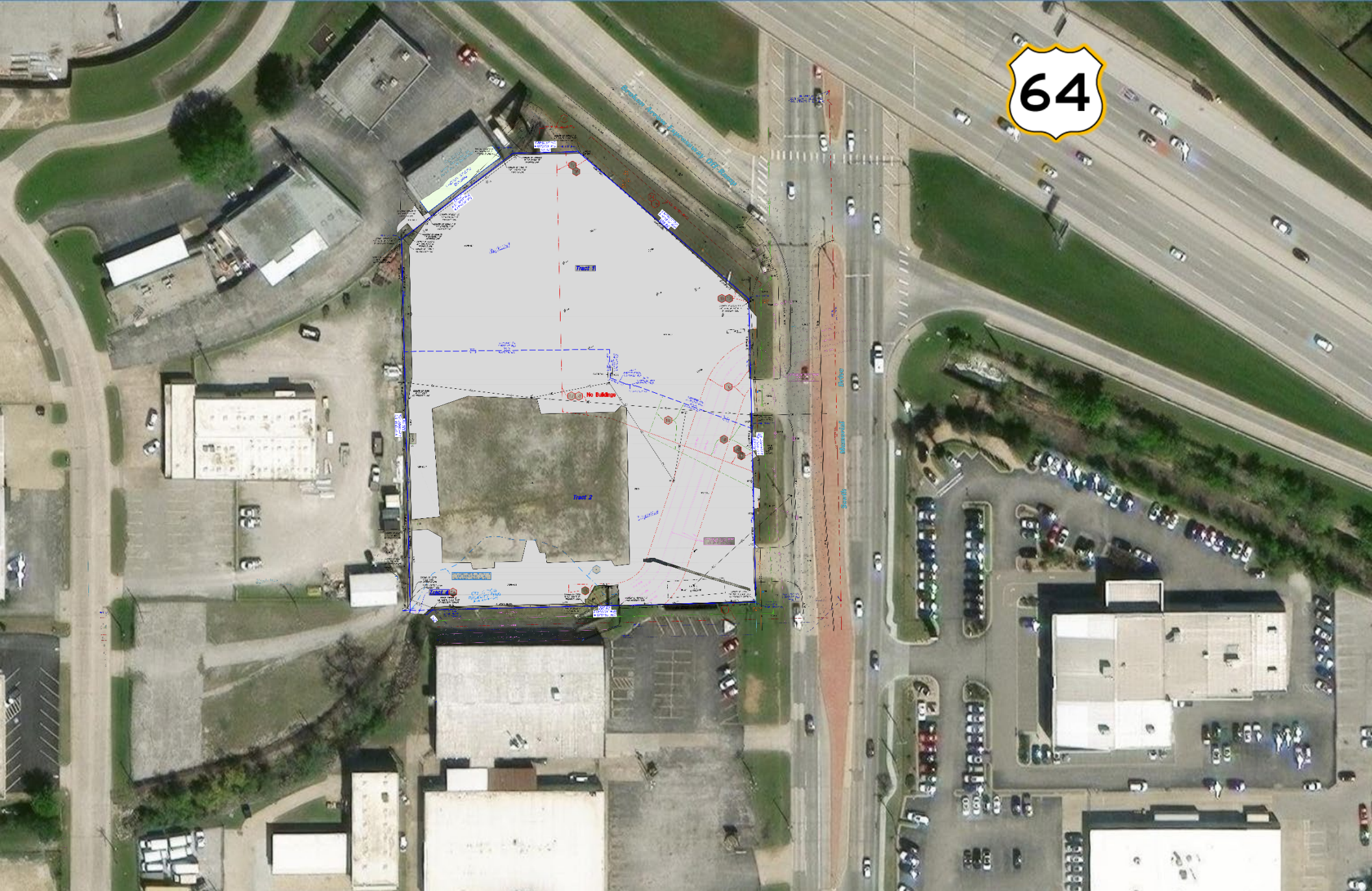


TOTAL HOUSEHOLDS
 1 MILE: 2,564
 3 MILES: 40,796
 5 MILES: 108,508



0.80 MILES FROM I-44
 1.2 MILES FROM HIGHWAY 51
 2.5 MILES FROM US-169

3900 S. MEMORIAL DRIVE SITE PLAN



3900 S. MEMORIAL DRIVE SITE PLAN

