

For Lease

±3,159 SF

Office Suite



1090 Park West Blvd- #103

Mount Pleasant, South Carolina 29466

Property Description

Attractive Class A office building located at the entrance of Park West Master Planned Development off of Hwy 17 N in Mt. Pleasant. Suite 103 is ±3,159 total SF and boasts tasteful finishes throughout the unit. The ground floor is ±2,469 SF and the private loft is ±690 SF. The building's signage and monument provides the tenant with unparalleled visibility and exposure from Hwy 17 N and Park West Blvd.

Property Highlights

- Ground floor contains 4 offices, conference room, reception area, kitchenette & 2 restrooms
- Loft contains 1 office, open work area, storage, 1 restroom
- First building on the right upon entering the Park West subdivision
- Many nearby amenities within Park West Master Planned Development
- Zoned: PD - Planned Development
- TICAM - \$8.15/SF
- **LEASE RATE: \$28/SF, NNN**



Map data ©2024 Google

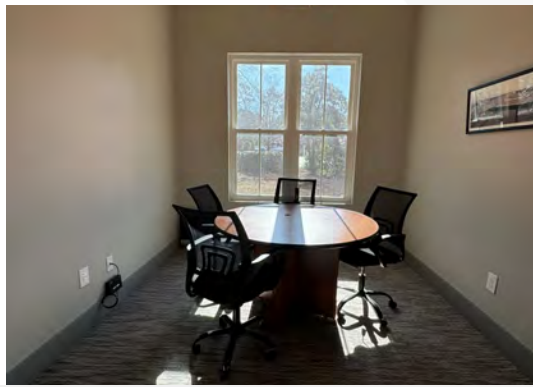
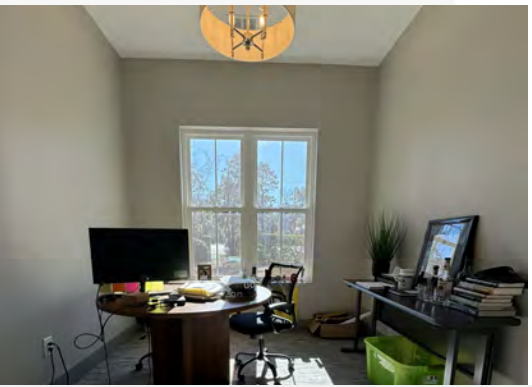
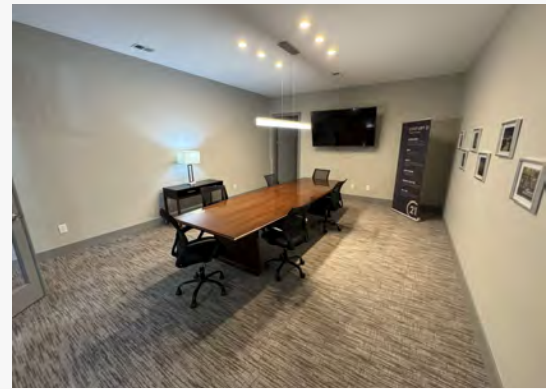
For more information

Trad Dyches, CCIM

843 364 4288

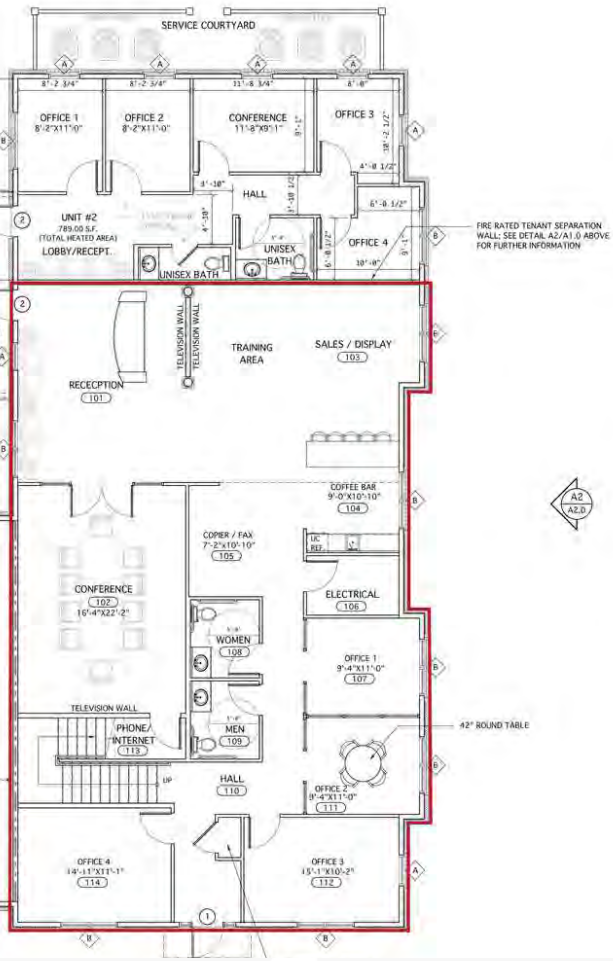
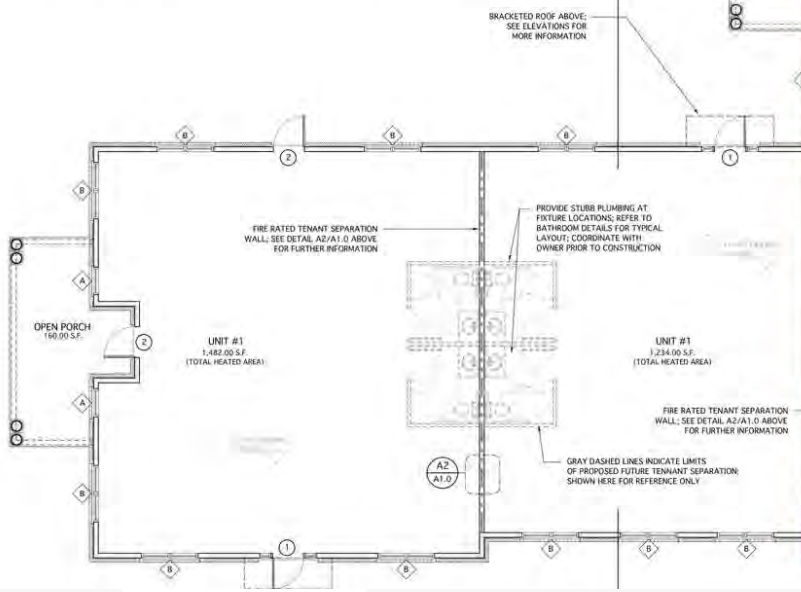
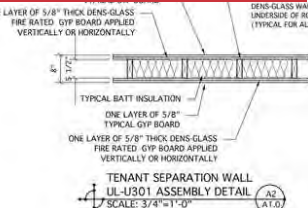
tdyches@naicharleston.com

Additional Photos

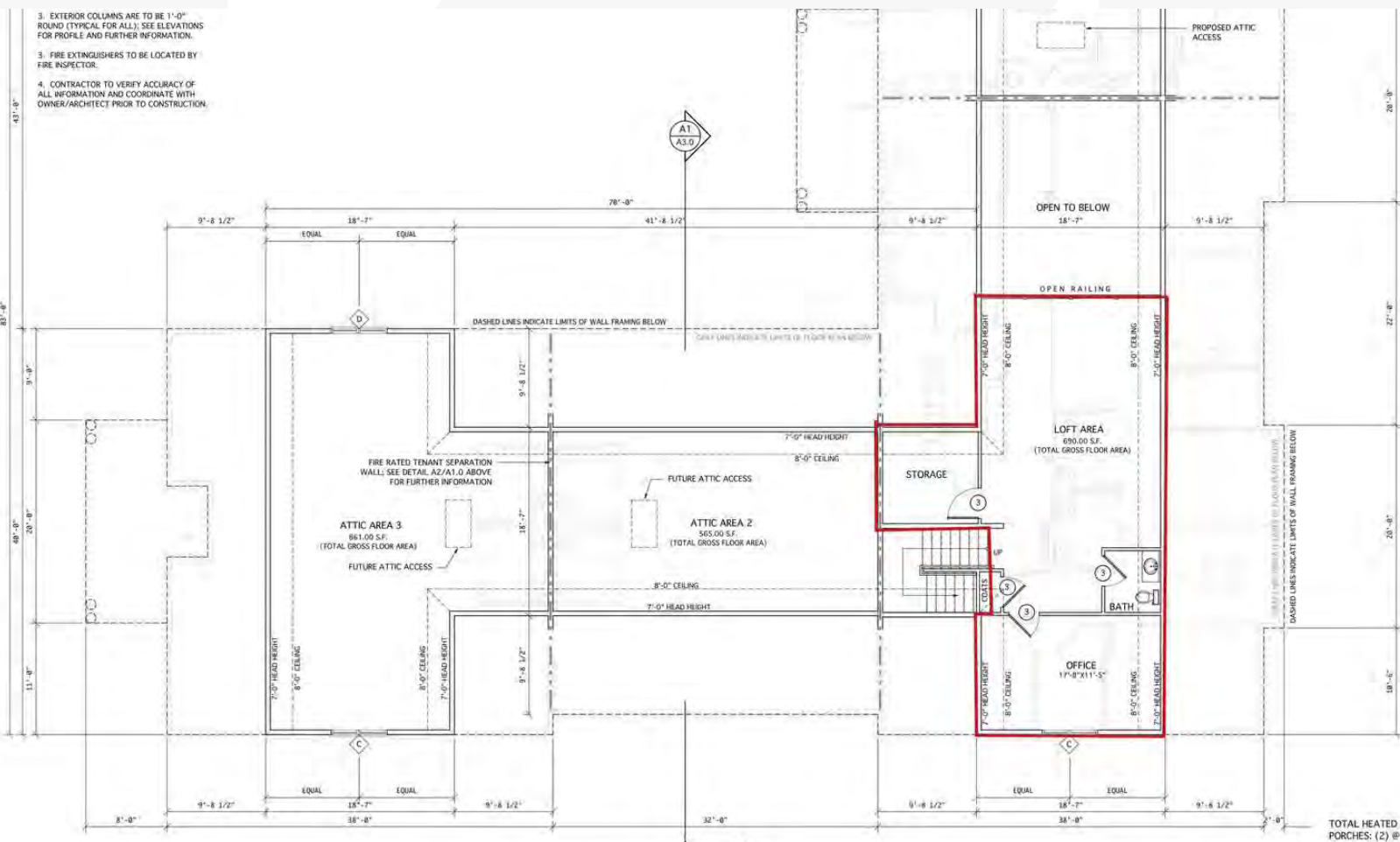


1st & 2nd Floor Plans

1. NOTIFY ARCHITECT IMMEDIATELY UPON DISCOVERY OF ANY CONDITIONS THAT ARE FOUND CONTRARY TO THOSE REPRESENTED WITHIN THESE DRAWINGS.
2. NOTIFY ARCHITECT IMMEDIATELY UPON DISCOVERY OF ANY CONDITIONS THAT ARE FOUND CONTRARY TO THOSE REPRESENTED WITHIN THESE DRAWINGS.
3. EXTERIOR COLUMNS ARE TO BE 1'-0" ROUND (TYPICAL FOR ALL); SEE ELEVATIONS FOR PROFILE AND FURTHER INFORMATION.
4. FIRE EXTINGUISHERS TO BE LOCATED BY FIRE INSPECTOR.
5. CONTRACTOR TO VERIFY ACCURACY OF ALL INFORMATION AND COORDINATE WITH OWNER/ARCHITECT PRIOR TO CONSTRUCTION.



3. EXTERIOR COLUMNS ARE TO BE 1'-0" ROUND (TYPICAL FOR ALL); SEE ELEVATIONS FOR PROFILE AND FURTHER INFORMATION.
3. FIRE EXTINGUISHERS TO BE LOCATED BY FIRE INSPECTOR.
4. CONTRACTOR TO VERIFY ACCURACY OF ALL INFORMATION AND COORDINATE WITH OWNER/ARCHITECT PRIOR TO CONSTRUCTION.



Area Maps

