

66 East 103rd Street, Chicago, IL 60628

66 E 103rd St



OFFERING SUMMARY

Available SF: 8,406 SF

Lease Rate: \$12.00 SF/yr (NNN)

Building Size: 8,406

PROPERTY OVERVIEW

8,406sf of inline space available in this three tenant building. ideal location for large medical user or retailer. The site is located at the northwest corner of 103rd St & Michigan Ave in Chicago's Roseland Community. Walgreens and White Castle are on the opposite corners. The area is densely populated. Traffic counts at this intersection are approximately 18,000 vehicles per day. High day time traffic and lots of foot traffic in this business and shopping district. Other retailers in the immediate area include Dollar Tree, Church's Chicken, Dunkin Donuts, the Grocery Basket and many Independent retail and service businesses.

PROPERTY HIGHLIGHTS

- Co-tenants Chase Bank & AutoZone
- Plenty of Parking +/- 51,000sf Site
- Traffic Light Intersection
- High Ceilings
- Pylon Signage

for more information

Neil Haleem

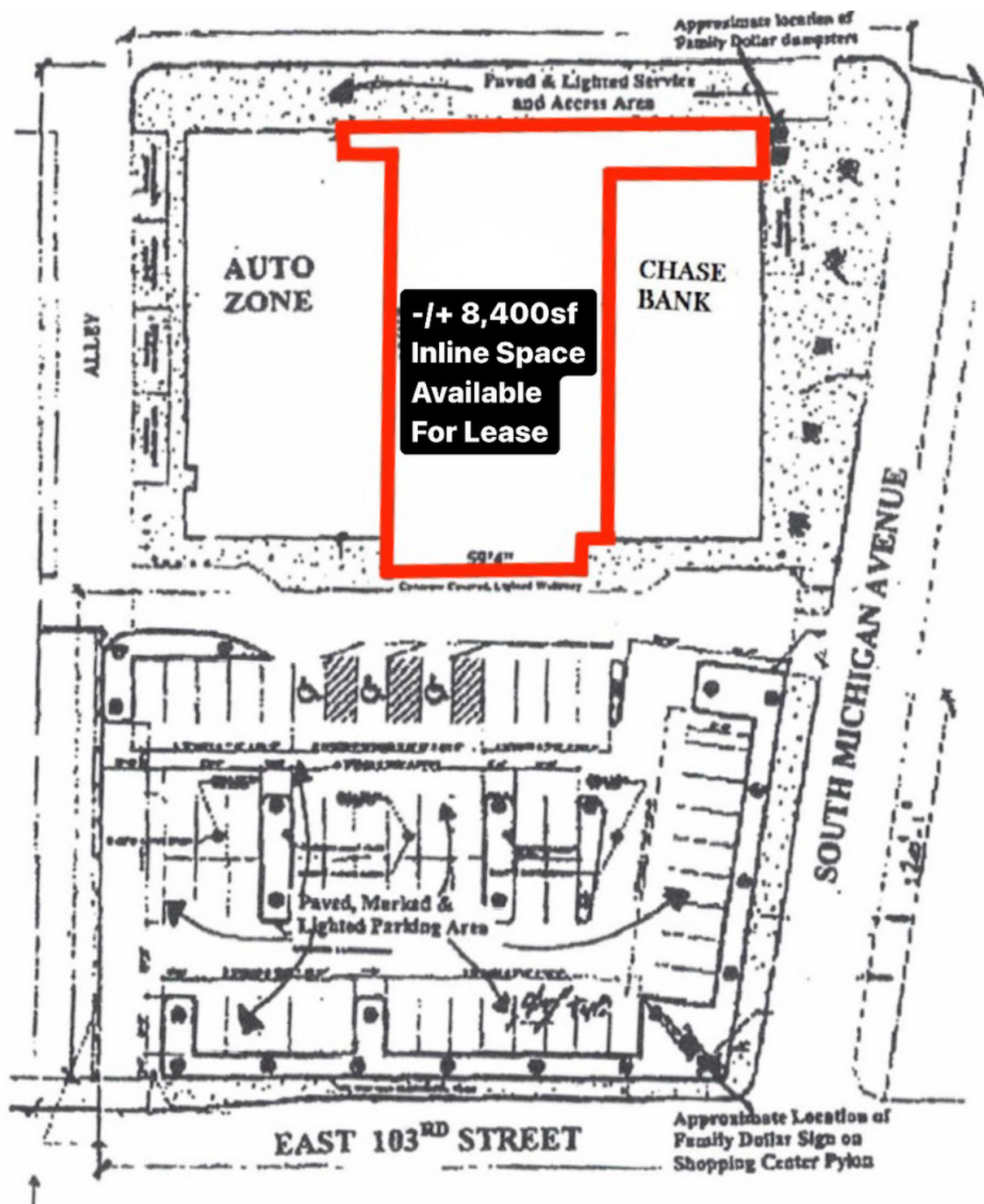
708.873.5540

neil@networkregroup.com



66 East 103rd Street, Chicago, IL 60628

66 E 103rd St



for more information

Neil Haleem

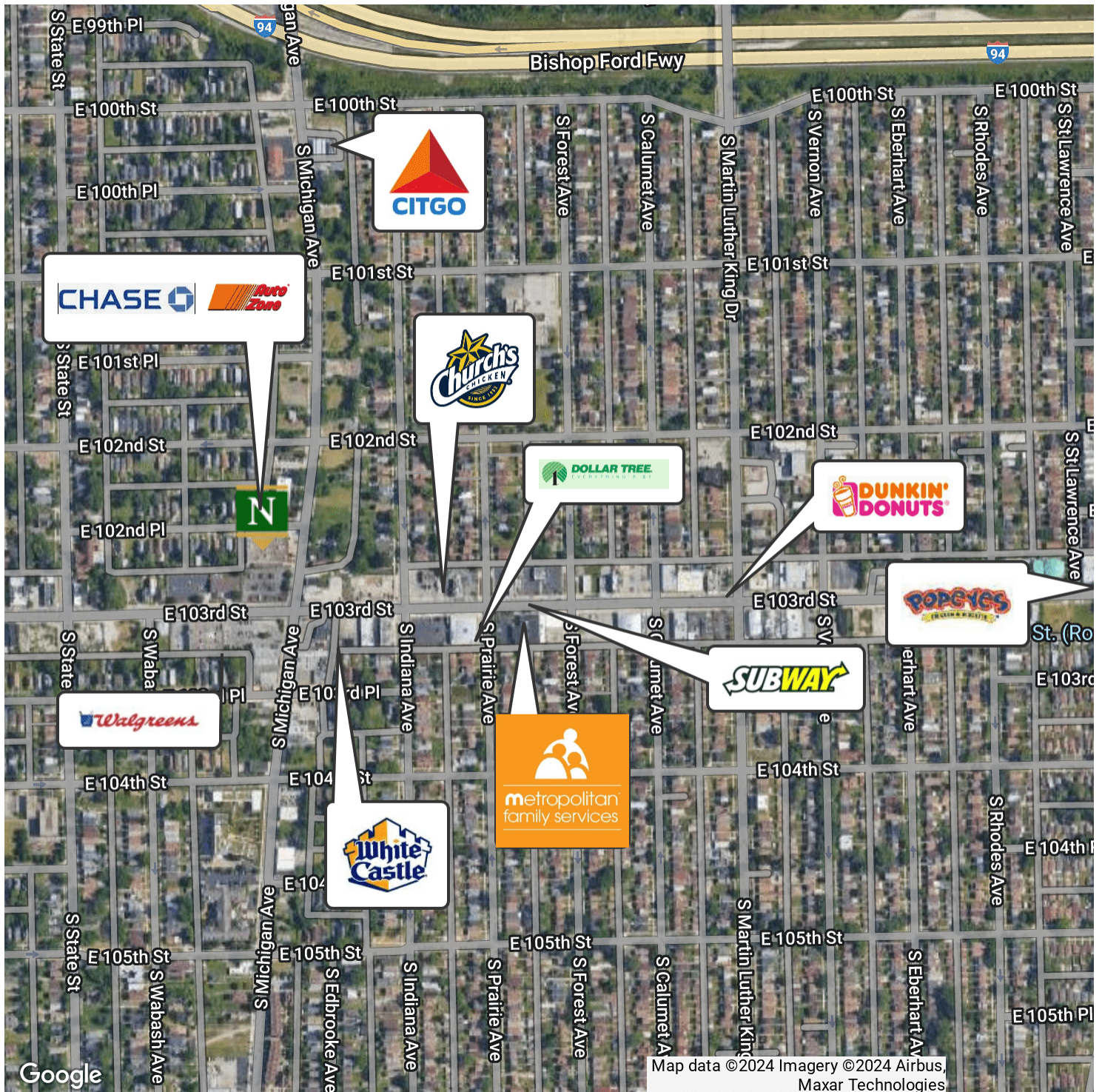
708.873.5540

neil@networkregroup.com



66 East 103rd Street, Chicago, IL 60628

66 E 103rd St



Google

Map data ©2024 Imagery ©2024 Airbus, Maxar Technologies

for more information

Neil Haleem

708.873.5540

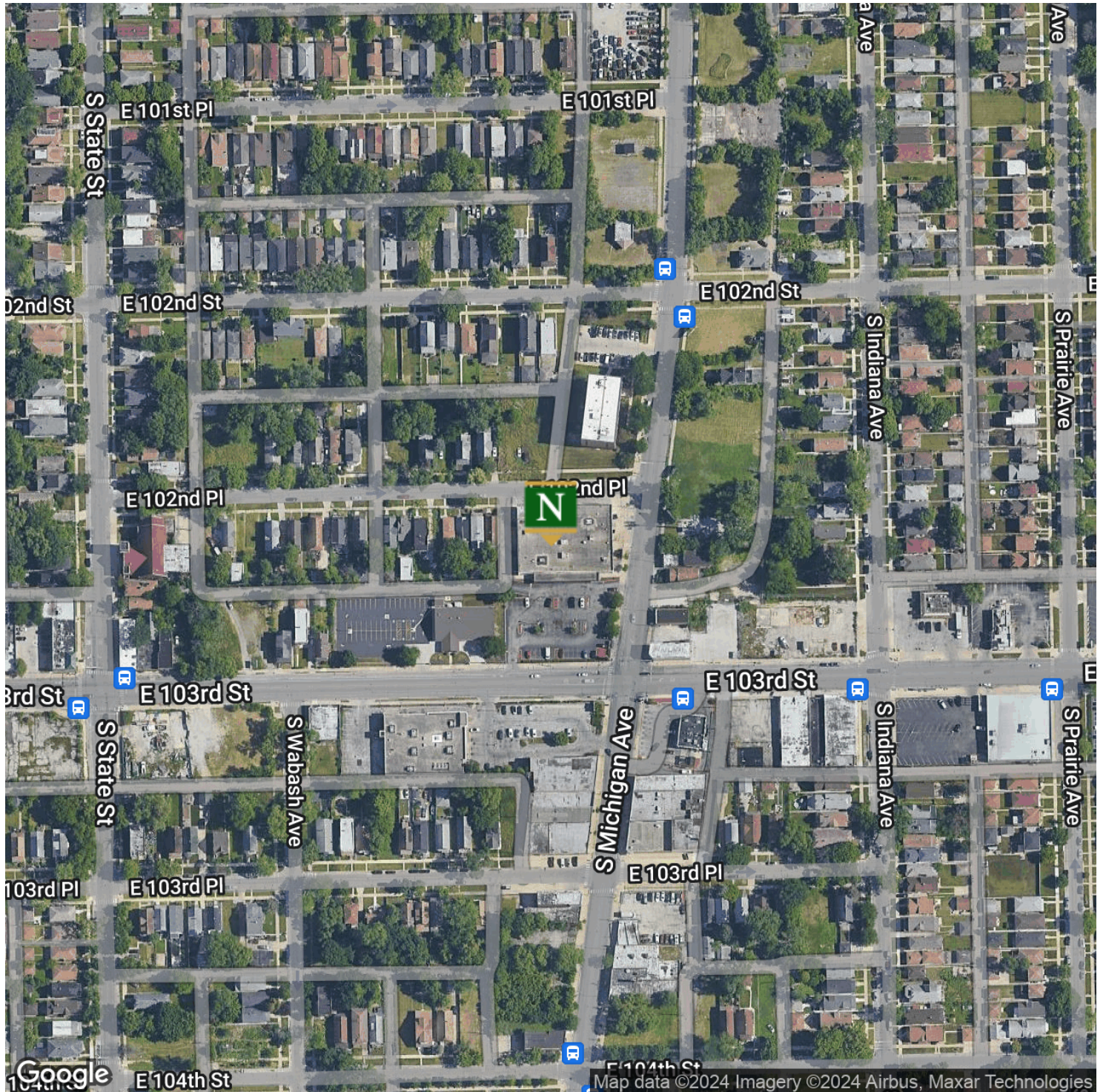
neil@networkregroup.com



Retail Property For Lease June 27, 2024

66 East 103rd Street, Chicago, IL 60628

66 E 103rd St



for more information

Neil Haleem

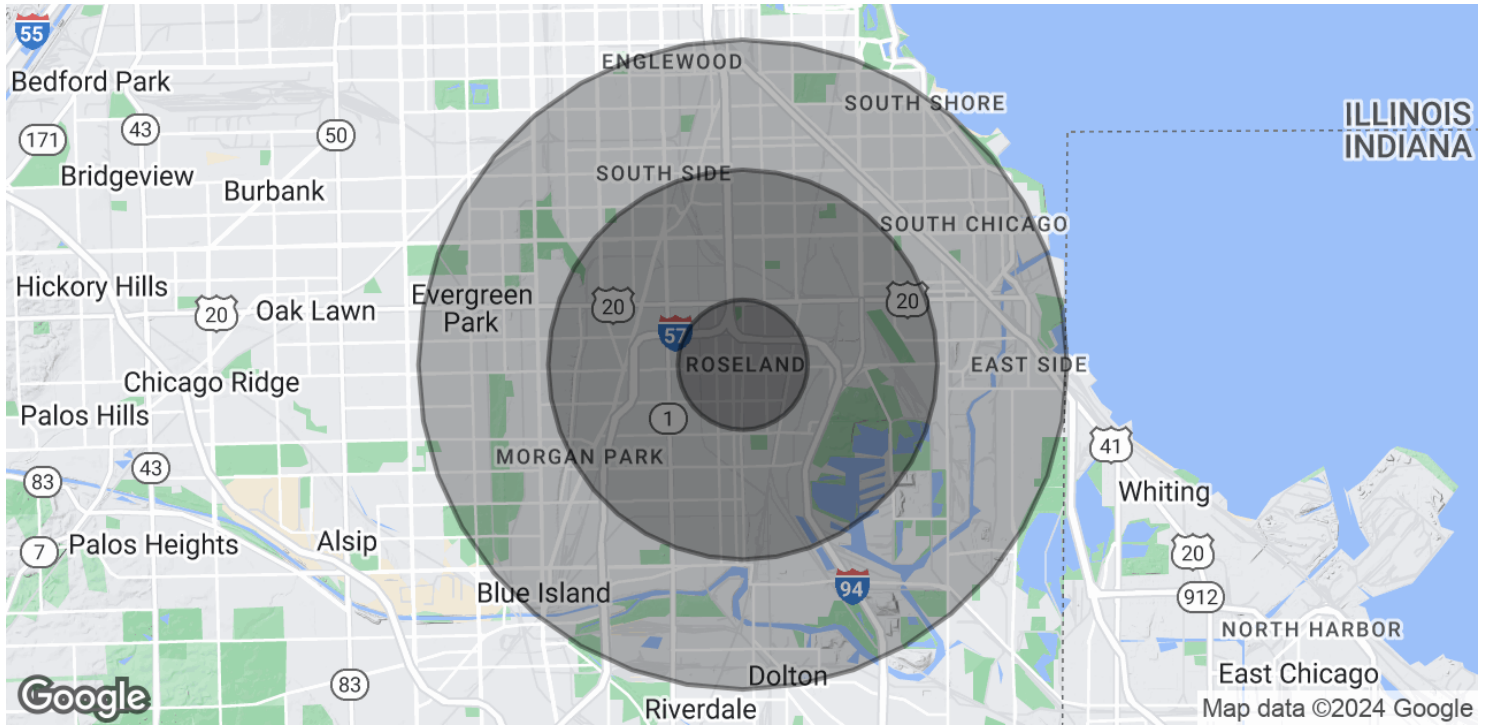
708.873.5540

neil@networkregroup.com



66 East 103rd Street, Chicago, IL 60628

66 E 103rd St



POPULATION	1 MILE	3 MILES	5 MILES
Total Population	23,470	167,925	444,638
Average Age	43	43	41
Average Age (Male)	40	41	39
Average Age (Female)	44	45	43
HOUSEHOLDS & INCOME	1 MILE	3 MILES	5 MILES
Total Households	9,387	68,839	177,663
# of Persons per HH	2.5	2.4	2.5
Average HH Income	\$64,928	\$76,531	\$75,481
Average House Value	\$176,392	\$220,656	\$233,324
ETHNICITY (%)	1 MILE	3 MILES	5 MILES
Hispanic	2.7%	4.0%	13.1%
RACE	1 MILE	3 MILES	5 MILES

for more information

Neil Haleem

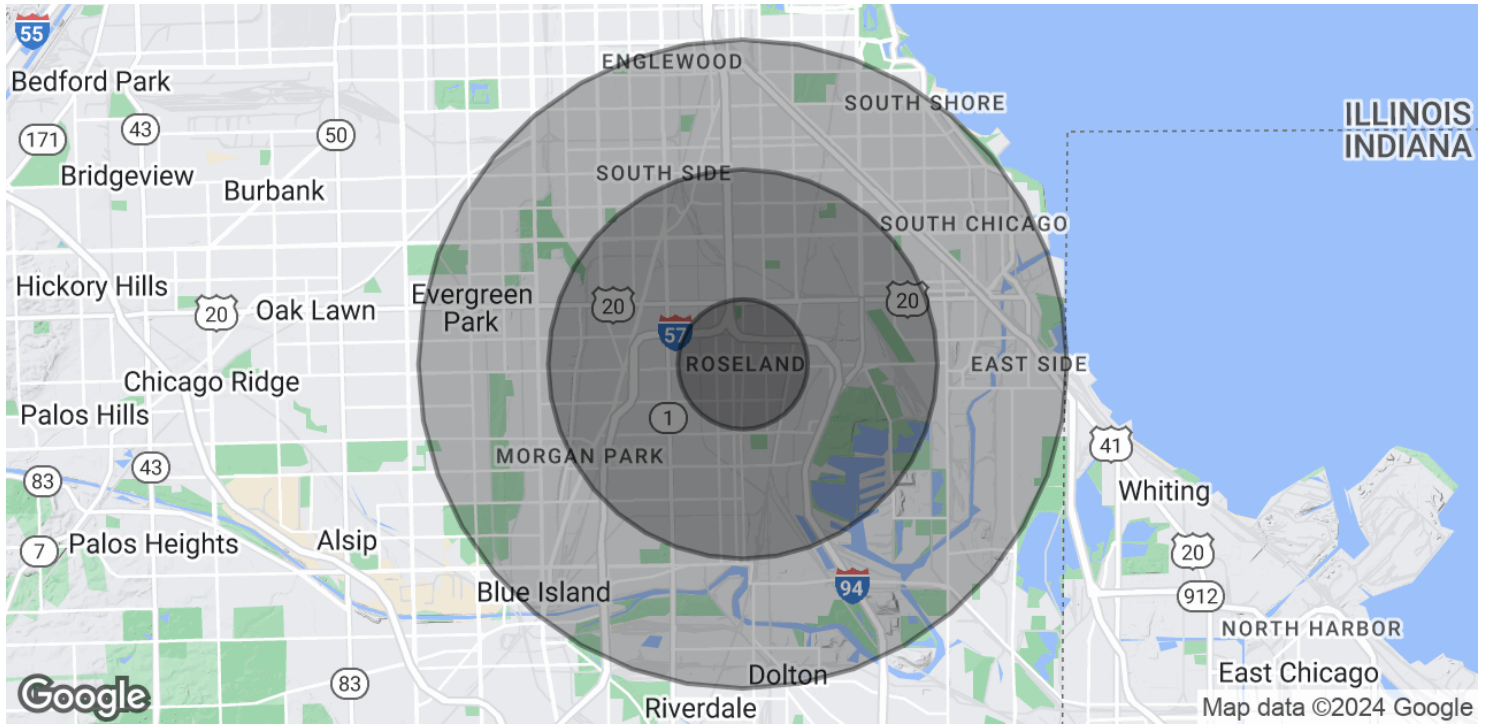
708.873.5540

neil@networkregroup.com



66 East 103rd Street, Chicago, IL 60628

66 E 103rd St



Total Population - White	208	7,688	56,593
% White	0.9%	4.6%	12.7%
Total Population - Black	22,210	150,570	328,811
% Black	94.6%	89.7%	74.0%
Total Population - Asian	35	357	1,320
% Asian	0.1%	0.2%	0.3%
Total Population - Hawaiian	2	24	119
% Hawaiian	0.0%	0.0%	0.0%
Total Population - American Indian	31	300	2,392
% American Indian	0.1%	0.2%	0.5%
Total Population - Other	307	3,306	28,617
% Other	1.3%	2.0%	6.4%

Demographics data derived from AlphaMap

for more information

Neil Haleem

708.873.5540

neil@networkregroup.com

