



DOWNTOWN SAN MATEO

±1,825
AVAILABLE

WWW.400SOUTH.COM



Gary Boitano

Executive Director

+1 650 401 2122

gary.boitano@cushwake.com

Chris Blom

Executive Vice President

+1 650 480 2057

chris.blom@jll.com



PROPERTY HIGHLIGHTS

- 14-Story Premier Class A Office Building
- 6-Story Parking Structure with 256 Parking Spaces
- 360-Degree Views of the Peninsula and San Francisco Bay
- Contemporary Hallways, Lobbies, and Restrooms
- 6 New Electric Car Charging Stations
- On-Site Management
- Outdoor Amenity Space with WIFI
- In Downtown San Mateo (220 Shops, Restaurants, Bars and Health & Fitness Centers)
- 10 Minute Walk (.5 miles) to San Mateo Caltrain
- Less than 5 Minutes to HWY 101 and 10 Minutes to HWY 280



SPACE AVAILABLE

 **400**
SOUTH

SUITE #	SF	NOTES
SUITE 225	±1,825 RSF	2 Conference rooms 3 Private offices Open kitchenette Available Now

 360°



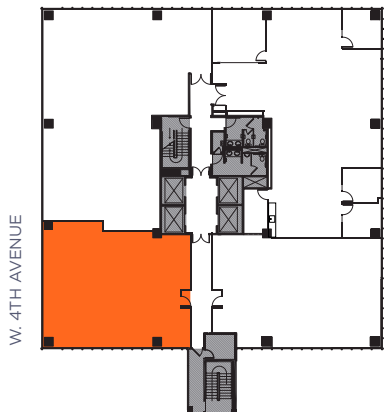
FLOOR PLANS

SUITE 225 | ±1,825 RSF

- **2 Conference rooms**
- **3 Private offices**
- **Open kitchenette**
- **Available Now**

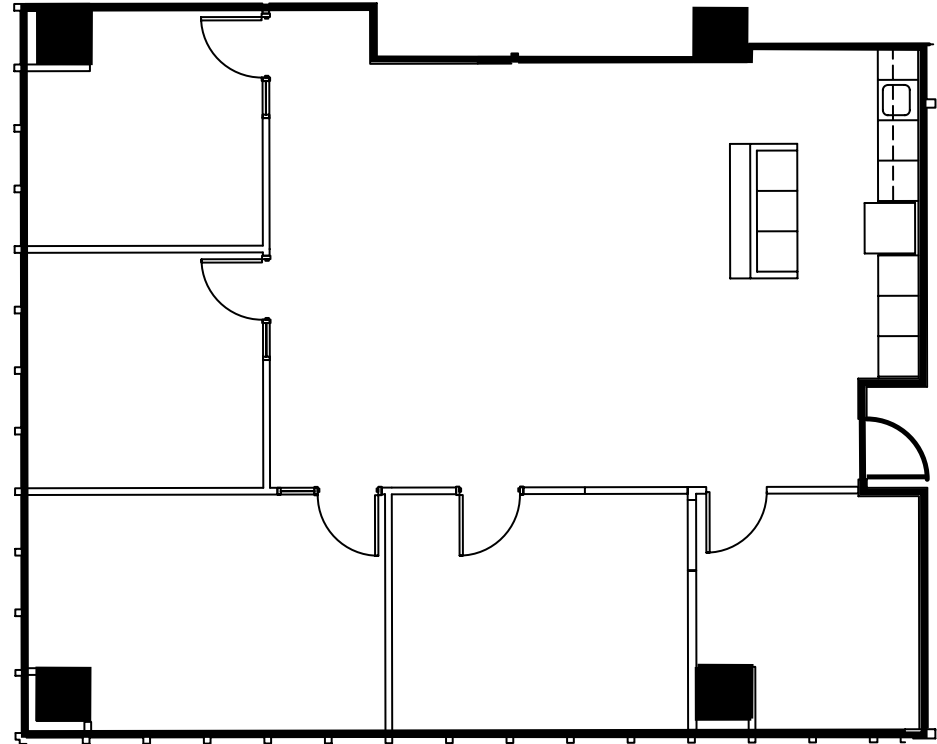
360°

KEY S. EL CAMINO REAL / BAY VIEWS



W. 4TH AVENUE

S. EL CAMINO REAL / **BAY VIEWS**



AMENITIES

- 150+ Food and Beverage Establishments
- Caltrain Station (10 Minutes)
- Fitness Centers (Equinox, Orangetheory)
- Century 12 Movie Theater
- Multiple Public Parking Garages
- Draeger's Supermarket
- Central Park
- Walk Score - 96 - "Walker's Paradise"



RESTAURANTS

- | | |
|--------------------------|---------------------------------|
| 1 B Street & Vine | 15 Backhaus |
| 2 Sushi Sam's Edomata | 16 Vespucci Ristorante Italiano |
| 3 Takahashi Market | 17 Izakaya Mai |
| 4 Sushi Yoshizumi | 18 M Sandwiches |
| 5 Himawari | 19 Gyu-Kaku Japanese BBQ |
| 6 Taishoken | 20 Gao Viet Kitchen & Bar |
| 7 Happy Lamb Hot Pot | 21 Izakaya Ginji |
| 8 Pausa Bar & Cookery | 22 C Food Crush |
| 9 The Ravioli House | 23 Pacific Catch |
| 10 Pokeatery | 24 Hummus Mediterranean Kitchen |
| 11 Pancho Villa Taqueria | 25 Joy Sushi |
| 12 Yakitori Kokko | 26 DASH Japanese Tapas & Sushi |
| 13 Philz Coffee | |
| 14 Curry Up Now | |

- | |
|------------------|
| 27 Amour Amour |
| Wine Bar - Tapas |
| 28 BAMBU |
| 29 Fuji Sukiyaki |
| 30 Foreigner |

SERVICES

- | |
|------------------------|
| 1 Draeger's Market |
| 2 Draper University |
| 3 Walgreen's |
| 4 Century 12 San Mateo |
| 5 Hero City |
| 6 U.S. Post Office |
| 7 Shell |

FITNESS

- | |
|----------------------------|
| 1 OPEX KURA |
| 2 Fit SF Personal Training |
| 3 Orangetheory Fitness |
| San Mateo |
| 4 Equinox San Mateo |

BANKS

- | |
|--------------------|
| 1 Chase Bank |
| 2 Wells Fargo Bank |
| 3 Bank of America |
| 4 Bank of the West |
| 5 Citibank |
| 6 Union Bank |
| 7 U.S. Bank |

PARKING

- | | |
|-----------------------|-------------------------|
| P 2ND & ECR Garage | P 4th/B Lot |
| P Main St Garage | P Transit Center Garage |
| P Tennis Court Garage | P 5th/Claremont Lot |
| P Central Garage | P 4th/Claremont Lot |
| P 5th/B Lot | |

LEASING CONTACTS

Gary Boitano

Executive Director

+1 650 401 2122

gary.boitano@cushwake.com

LIC #01902693

Chris Blom

Executive Vice President

+1 650 480 2057

chris.blom@jll.com

LIC #02031205

©2025 Cushman & Wakefield. All rights reserved. The information contained in this communication is strictly confidential. This information has been obtained from sources believed to be reliable but has not been verified. NO WARRANTY OR REPRESENTATION, EXPRESS OR IMPLIED, IS MADE AS TO THE CONDITION OF THE PROPERTY (OR PROPERTIES) REFERENCED HEREIN OR AS TO THE ACCURACY OR COMPLETENESS OF THE INFORMATION CONTAINED HEREIN, AND SAME IS SUBMITTED SUBJECT TO ERRORS, OMISSIONS, CHANGE OF PRICE, RENTAL OR OTHER CONDITIONS, WITHDRAWAL WITHOUT NOTICE, AND TO ANY SPECIAL LISTING CONDITIONS IMPOSED BY THE PROPERTY OWNER(S). ANY PROJECTIONS, OPINIONS OR ESTIMATES ARE SUBJECT TO UNCERTAINTY AND DO NOT SIGNIFY CURRENT OR FUTURE PROPERTY PERFORMANCE. COE-PM-West-12.29.2025



 **400**
SOUTH

