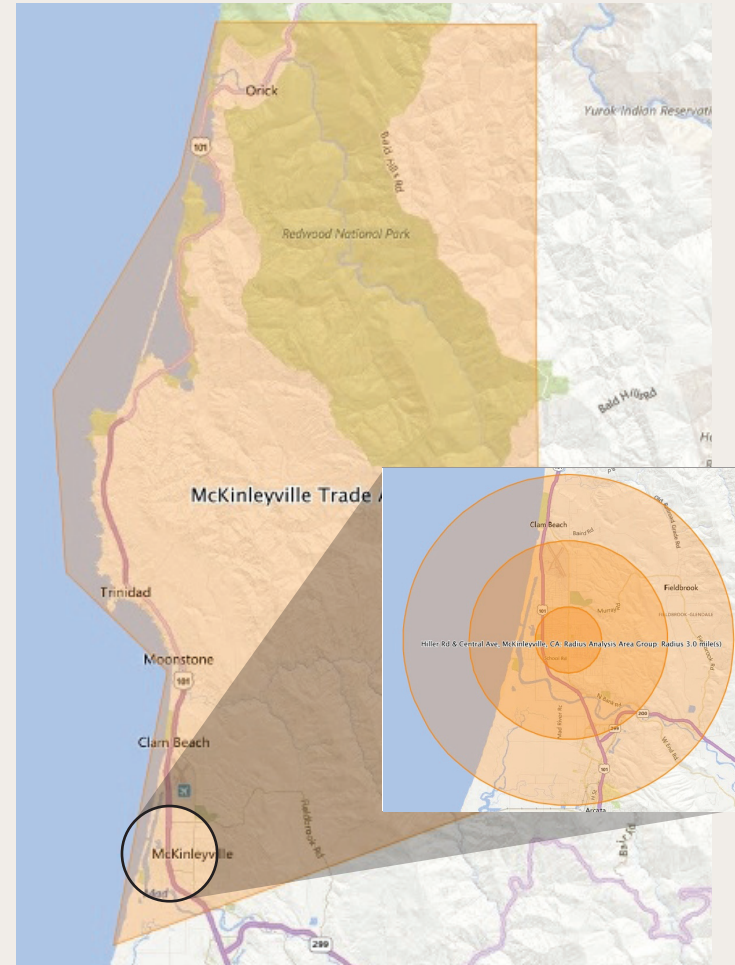
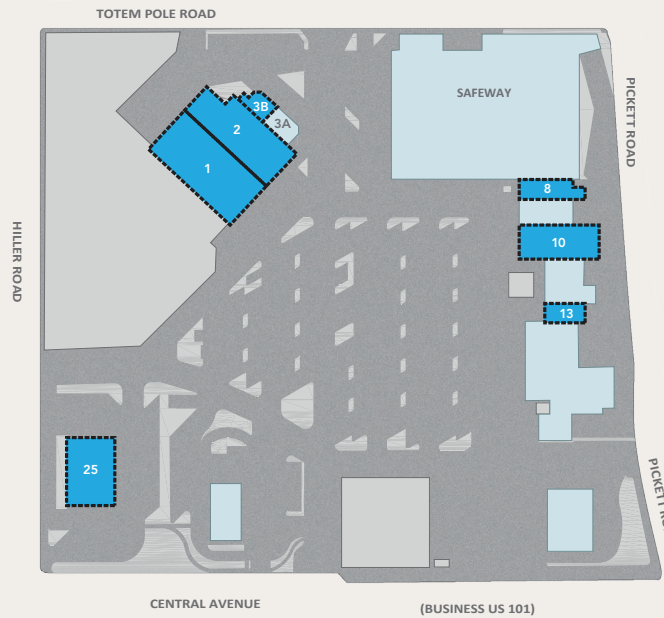


## Mckinleyville Shopping Center Trade Area



# McKinleyville Shopping Center

City Center Road  
 McKinleyville, CA 95519  
 (707) 268-1800



## McKinleyville Market Area Profile

### Trade Area Profile:

Current Population .....	19,611
Current Median Age.....	42
Average Household Income .....	\$67,050

	1 mi.	3 mi.	5 mi.
Population	8,361	16,918	30,462
Population Growth	4.78%	3.08%	2.25%
Average HH Income	\$67,368	\$66,099	\$61,690
College Educated	71.96%	64.69%	67.82%

### Center of the Community Since 1962:

- 19,520 vehicles drive by daily
- Home of the #1 volume Safeway Store of the area
- Adjacent to 50 acres of developable property
- Population has grown 8 times faster than the county average



1200 W. Harris Street, Eureka, CA 95503  
 (707) 268-1800  
 (707) 268-1801 Fax

greg.p@piersoncompany.com  
[www.piersoncompany.com/Available Space](http://www.piersoncompany.com/Available Space)  
[www.mckinleyvilleshoppingcenter.com](http://www.mckinleyvilleshoppingcenter.com)

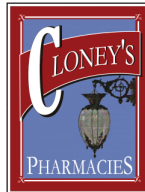


1200 W. Harris Street, Eureka, CA 95503  
 (707) 268-1800  
 (707) 268-1801 Fax

greg.p@piersoncompany.com  
[www.piersoncompany.com/Available Space](http://www.piersoncompany.com/Available Space)  
[www.mckinleyvilleshoppingcenter.com](http://www.mckinleyvilleshoppingcenter.com)

- Home of the Humboldt County Airport and the World's Largest Totem Pole
- Home of the #1 volume Safeway store of the area
- \$320 million dollar tourist industry in Humboldt County
- Education level is higher than the U.S. average
- McKinleyville is growing over 8 times faster than the county average
- Humboldt State University and College of the Redwoods have a student population of over 17,000
- Major Employers: Humboldt State University, Sierra Pacific Industries, St. Joseph Health Services, Humboldt County Office of Education

# McKinleyville Shopping Center

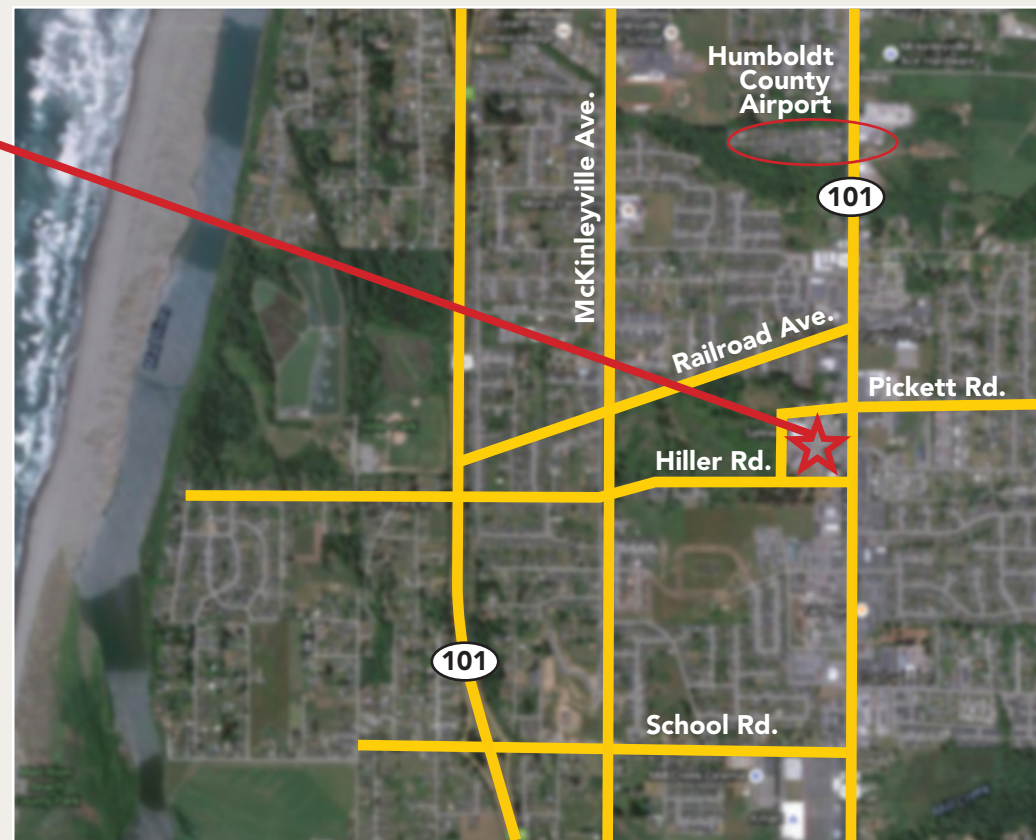


Owned by Shopping Center and available for development

The Shopping Center's vacant land is designated the "Town Center"



Business US 101 Pylon Sign

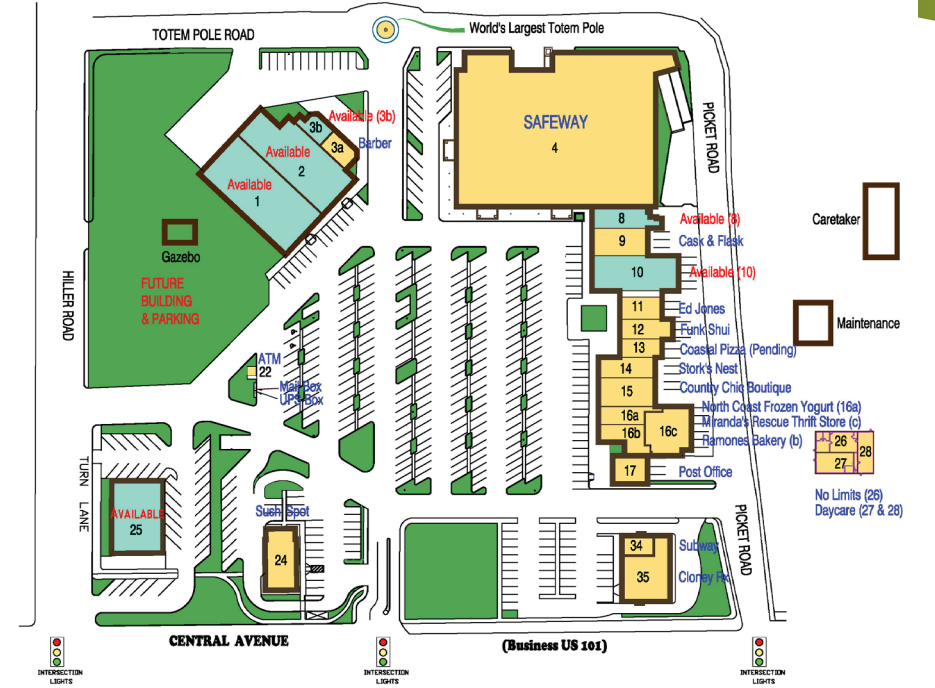


McKinleyville, CA

## World's Largest Totem Pole



## The MCKINLEYVILLE SHOPPING CENTER



Space #1 – 8,576 Sq. Ft. Open Floor Plan - Available Now



Space #2 – 7,304 Sq. Ft. Former School Great for Office - Available Now



Space #25 – 4,624 Sq. Ft. Stand Alone Building. Former Bank - Available Now



Space #10 – 4,000 Sq. Ft. Great Visibility - Available July 1, 2016



For leasing information call: (707) 268-1800 Ext. 11  
[www.pieroncompany.com/Available Space](http://www.pieroncompany.com/Available Space)  
[www.mckinleyvilleshoppingcenter.com](http://www.mckinleyvilleshoppingcenter.com)