

# 666 N. KILKEA DRIVE

*For Lease – Standalone Retail/Office Space off Melrose Avenue*



**JARED SWEDELSON**

Vice President

d: 818-742-1632

m: 818-644-7597

[jswedelson@naicapital.com](mailto:jswedelson@naicapital.com)

Cal DRE Lic #02105146

**NAI CAPITAL - WEST LA**

11550 Santa Monica Blvd., Suite 1550

Los Angeles, CA 90025

d: 310-806-6100

f: 310-806-6101

[www.naicapital.com](http://www.naicapital.com)

**NAI Capital**  
COMMERCIAL REAL ESTATE SERVICES, WORLDWIDE



# Property Details



**Lease Rate**

\$5.30/SF NNN

**Available**

1,888 SF

## Space Features

- Rooftop patio with outdoor kitchen
- Freestanding two-story building
- Melrose adjacent
- Ample natural light
- Large window displays
- Open area, 3 private rooms, 2 restrooms and outside deck

# Property Details



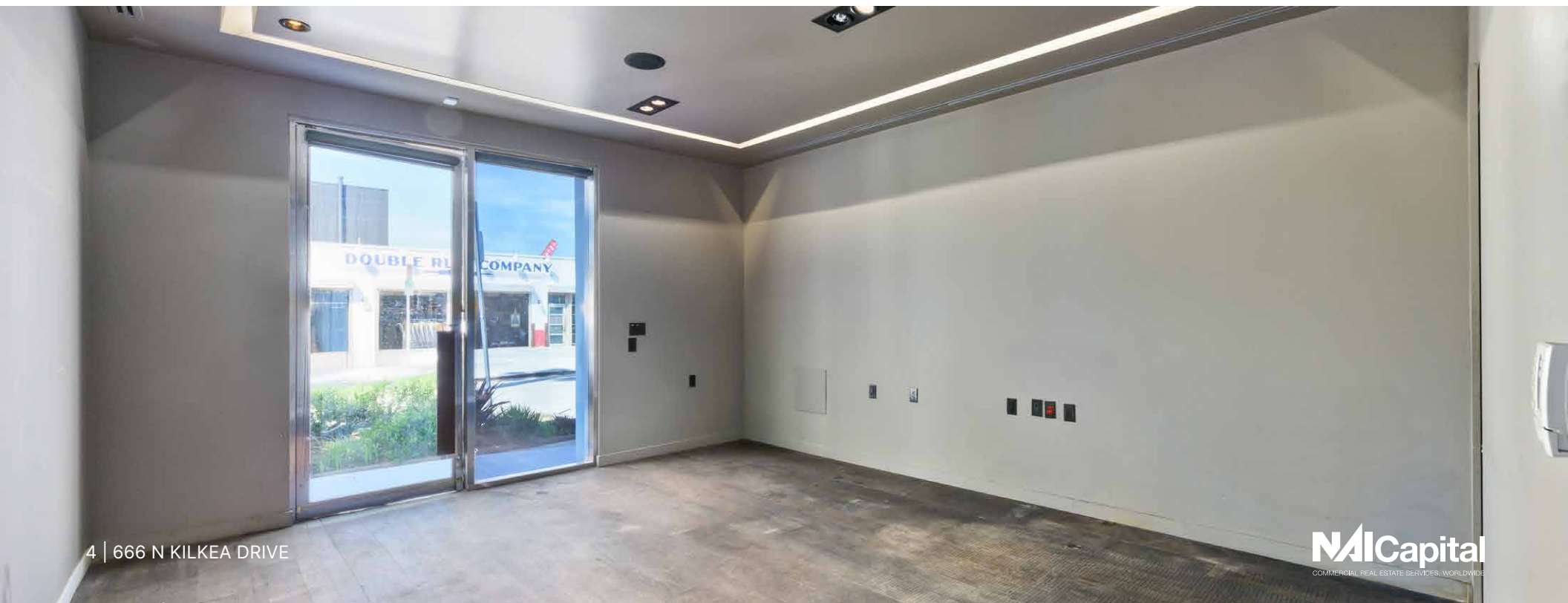
## Property Description

Discover a freestanding retail/office building with a rooftop patio, exceptional window frontage, and a premier location. The interior creates a dynamic work environment illuminated with natural light, and a versatile layout with 3 private offices and a spacious entryway.

Continuing onto the roof, the fully equipped outdoor kitchen creates an inviting space for events and team gatherings. Situated just off Melrose Avenue and adjacent to Aritzia's new development site, this 2-story space features access to top-tier retail, dining, and entertainment.



# Property Photos



# Property Photos

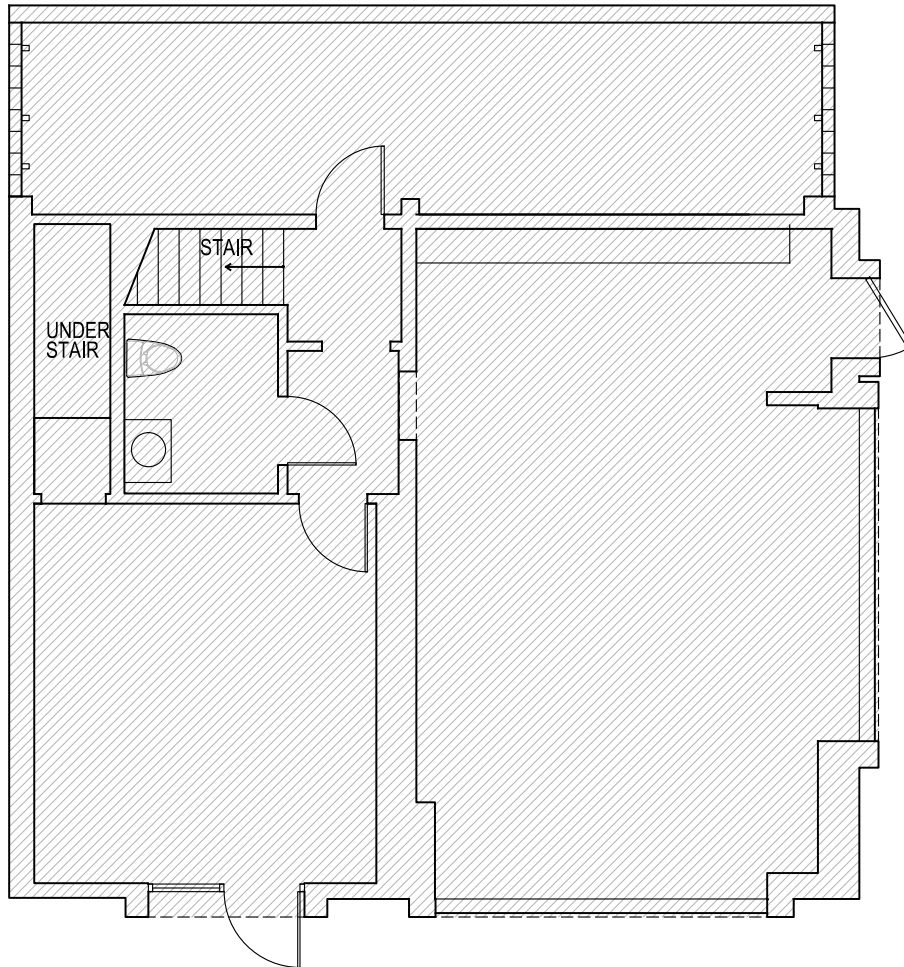


5 | 666 N KILKEA DRIVE

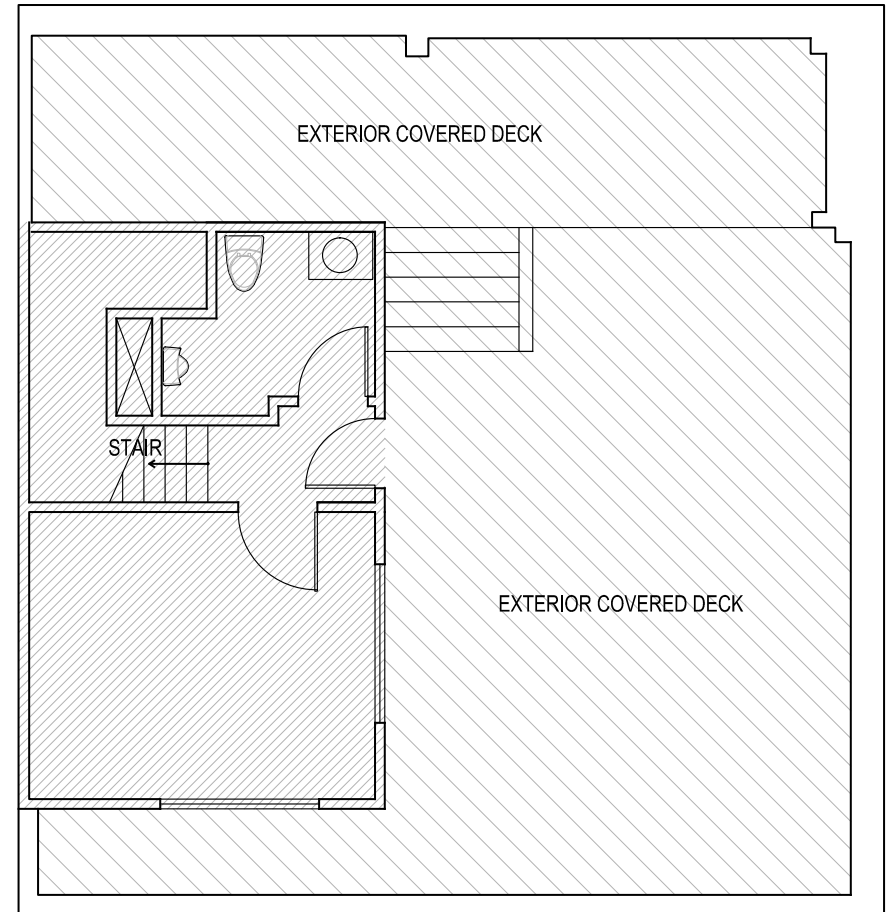


**NAL**Capital  
COMMERCIAL REAL ESTATE SERVICES, WORLDWIDE

# Floor Plan



FIRST FLOOR



SECOND FLOOR





# BEVERLY GROVE



TheRealReal  
*Glossier.*



HOUSE of LÉON

BALMAIN A.P.C.  
PARIS  
FRAME GUCCI  
BOTTEGA VENETA  
GOLDEN GOOSE / ★

JOYBIRD



RALPH  
LAUREN

ARITZIA

JONATHAN  
ADLER

N KILKEA DR

MELROSE AVE

N CRESCENT HEIGHTS BLVD



# Contact Info

## JARED SWEDELSON

Vice President  
d: 818-742-1632  
m: 818-644-7597  
jswedelson@naicapital.com  
Cal DRE Lic #02105146

## NAI CAPITAL - WEST LA

11550 Santa Monica Blvd., Suite 1550  
Los Angeles, CA 90025  
d: 310-806-6100  
f: 310-806-6101  
www.naicapital.com



No warranty, express or implied, is made as to the accuracy of the information contained herein. this information is submitted subject to errors, omissions, change of price, rental or other conditions, withdrawal without notice, and is subject to any special listing conditions imposed by our principals. cooperating brokers, buyers, tenants and other parties who receive this document should not rely on it, but should use it as a starting point of analysis, and should independently confirm the accuracy of the information contained herein through a due diligence review of the books, records, files and documents that constitute reliable sources of the information described herein. NAI Capital Cal DRE #02130474