

PARCEL FOR SALE

38,332 SQ FT

9111 WEEDPATCH HIGHWAY, LAMONT, CA 93241



FOR SALE

SOUTH PACIFIC COMMERCIAL
5330 Office Center Ct , Ste 34
Bakersfield, CA 93309



PRESENTED BY:

JOSE CHAVEZ
President
cell: (661) 599-3138
jose@sopacre.com
01160727, CA

The calculations and data presented are deemed to be accurate, but not guaranteed. They are intended for the purpose of illustrative projections and analysis. The information provided is not intended to replace or serve as substitute for any legal, accounting, investment, real estate, tax or other professional advice, consultation or service. The user of this software should consult with a professional in the respective legal, accounting, tax or other professional area before making any decisions.

PROPERTY SUMMARY

9111 WEEDPATCH HIGHWAY | LAMONT, CA 93241



Property Summary

Price:	\$595,000
Lot Size:	38,332 SF
Price / Acre:	\$15.50
Cross Streets:	Lamont Ave
Permitted Uses:	Commercial
Frontage:	170'
Traffic Count:	17,200
Zoning:	C-H
APN:	178-420-33

Property Overview

Approximately 38,332+/- sq ft parcel situated on a corner parcel in the city of Lamont. The site offers high traffic counts and a great opportunity for an owner user, QSR, Carwash, or various retail uses.

Location Overview

Lamont is in Kern County, California, United States. Lamont is located approximately 9 miles (14 km) south-southeast of downtown Bakersfield, at an elevation of 404 feet. The population is 13,481 approximately.

The average household income in Lamont is \$47,807. The median age in Lamont is 30.4 years: 30 years for males, and 30.5 years for females.

SOUTH PACIFIC COMMERCIAL
 5330 Office Center Ct , Ste 34
 Bakersfield, CA 93309



JOSE CHAVEZ
 President
 C: (661) 599-3138
 jose@sopacre.com
 01160727, CA

PARCEL MAP

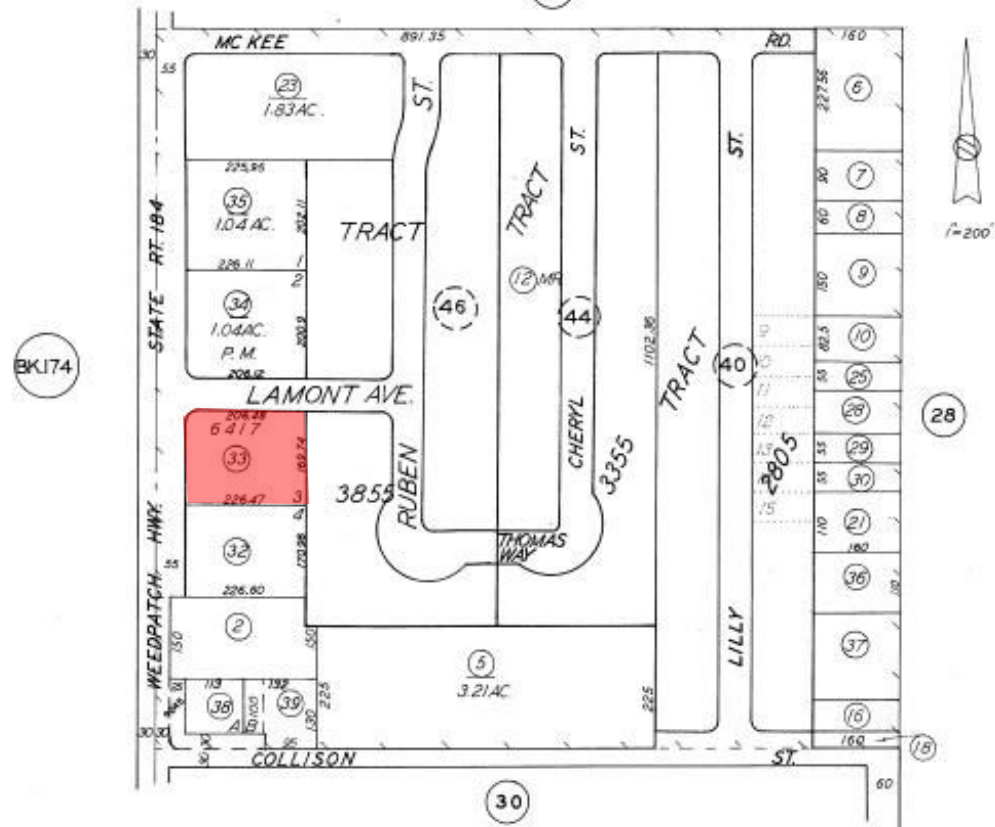
9111 WEEDPATCH HIGHWAY | LAMONT, CA 93241

178-42

NW1/4 OF SW1/4 SEC.31 T.30S.R.29E.

SCHOOL DIST. 96-20

178-42



Revised: September 12, 2001

Note: This map is for assessment purposes only. It is not to be construed as portraying legal ownership or divisions of land for purposes of zoning or subdivision law.

ASSESSORS MAP NO. 178-42
COUNTY OF KERN

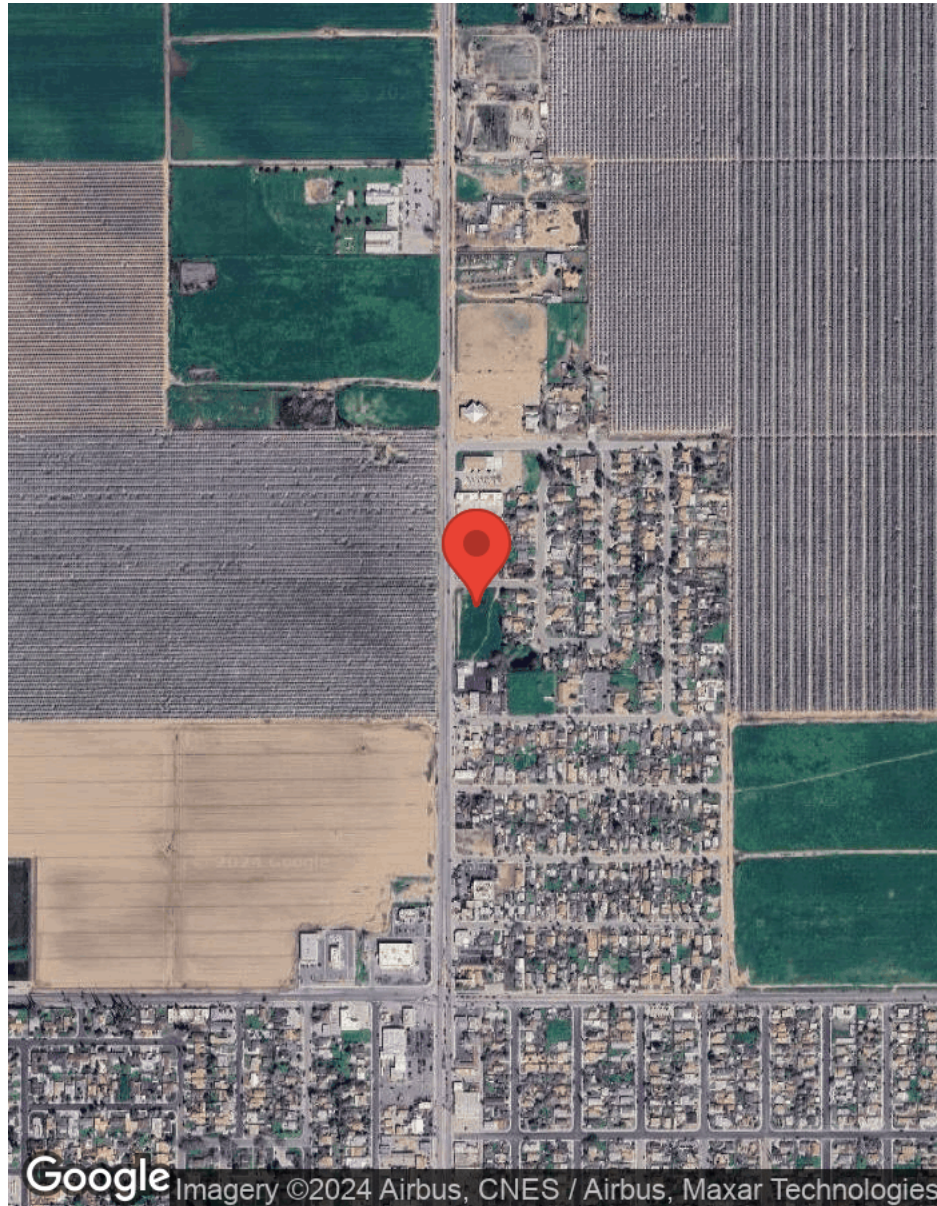
SOUTH PACIFIC COMMERCIAL
5330 Office Center Ct, Ste 34
Bakersfield, CA 93309



JOSE CHAVEZ
President
C: (661) 599-3138
jose@sopacre.com
01160727, CA

LOCATION MAPS

9111 WEEDPATCH HIGHWAY | LAMONT, CA 93241



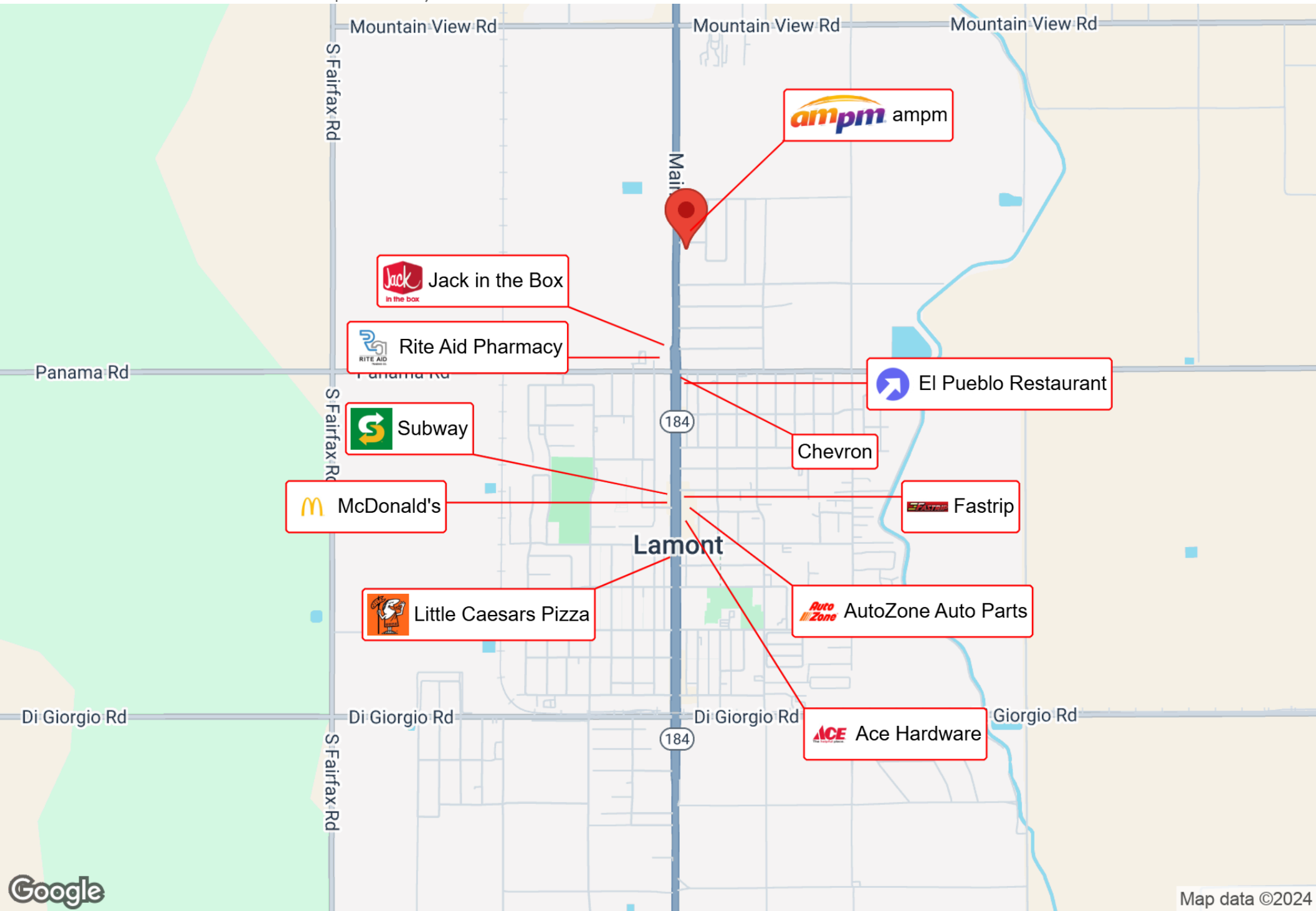
SOUTH PACIFIC COMMERCIAL
5330 Office Center Ct , Ste 34
Bakersfield, CA 93309



JOSE CHAVEZ
President
C: (661) 599-3138
jose@sopacre.com
01160727, CA

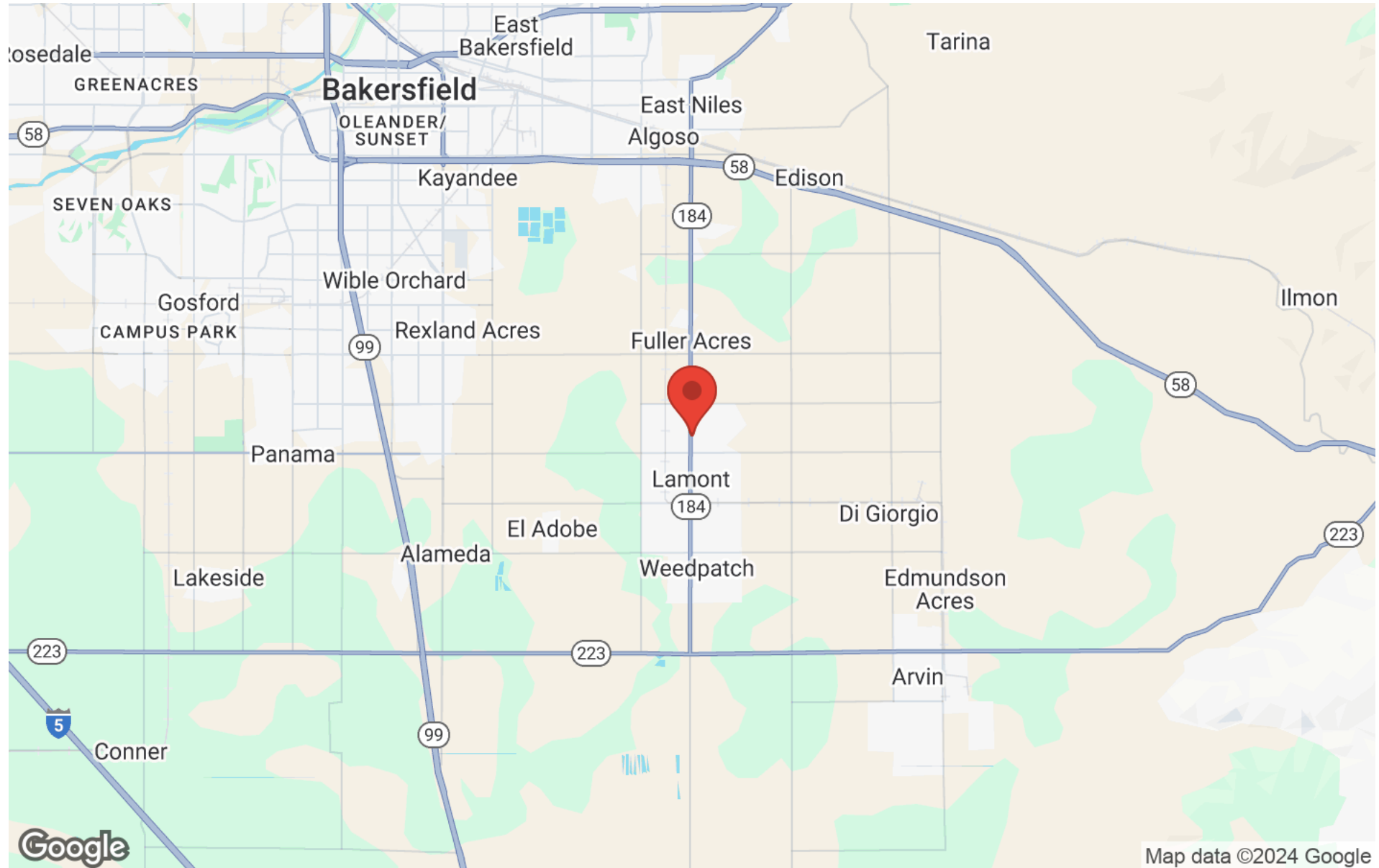
BUSINESS MAP

9111 WEEDPATCH HIGHWAY | LAMONT, CA 93241



REGIONAL MAP

9111 WEEDPATCH HIGHWAY | LAMONT, CA 93241



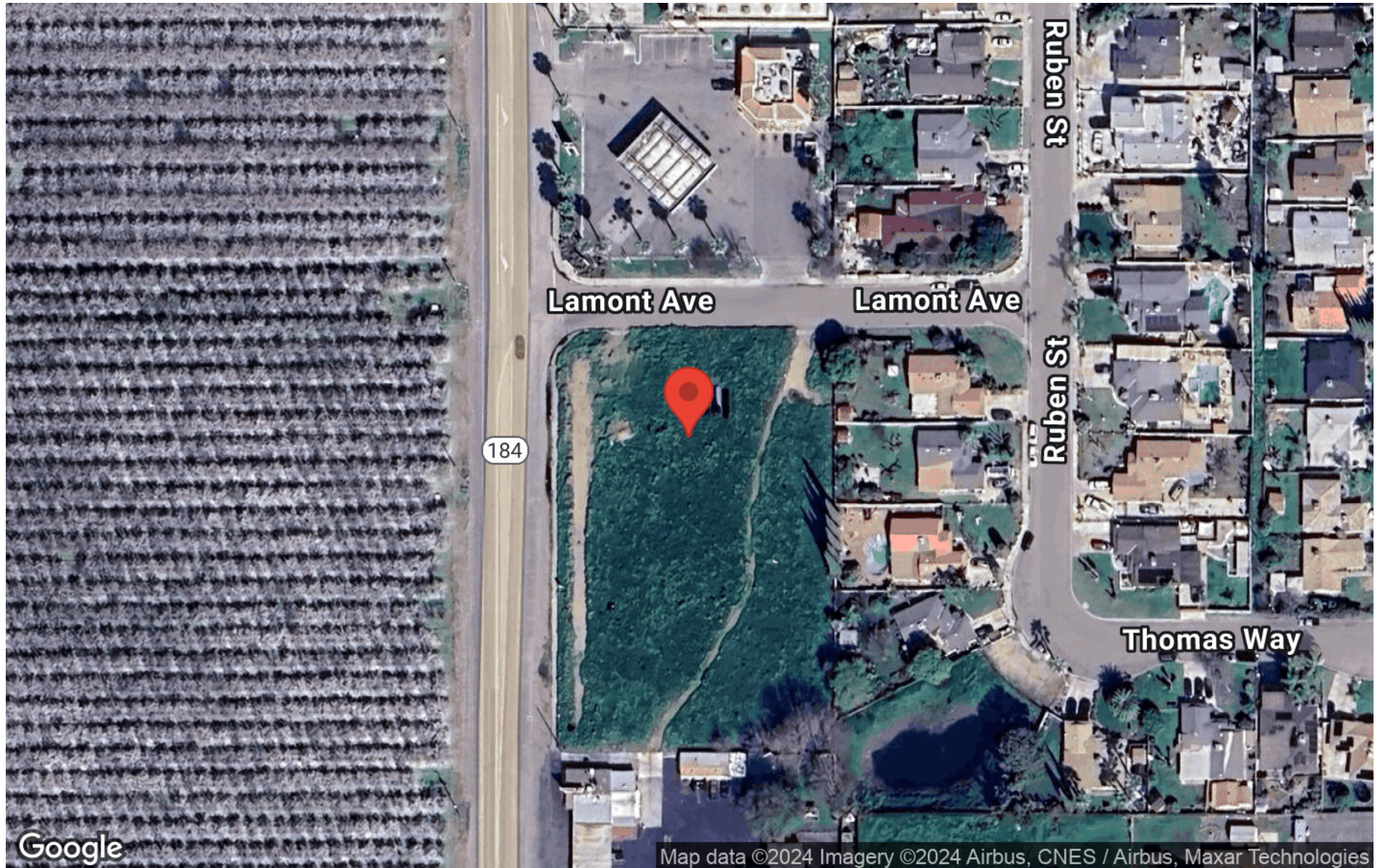
SOUTH PACIFIC COMMERCIAL
5330 Office Center Ct., Ste 34
Bakersfield, CA 93309



JOSE CHAVEZ
President
C: (661) 599-3138
jose@sopacre.com
01160727, CA

AERIAL MAP

9111 WEEDPATCH HIGHWAY | LAMONT, CA 93241



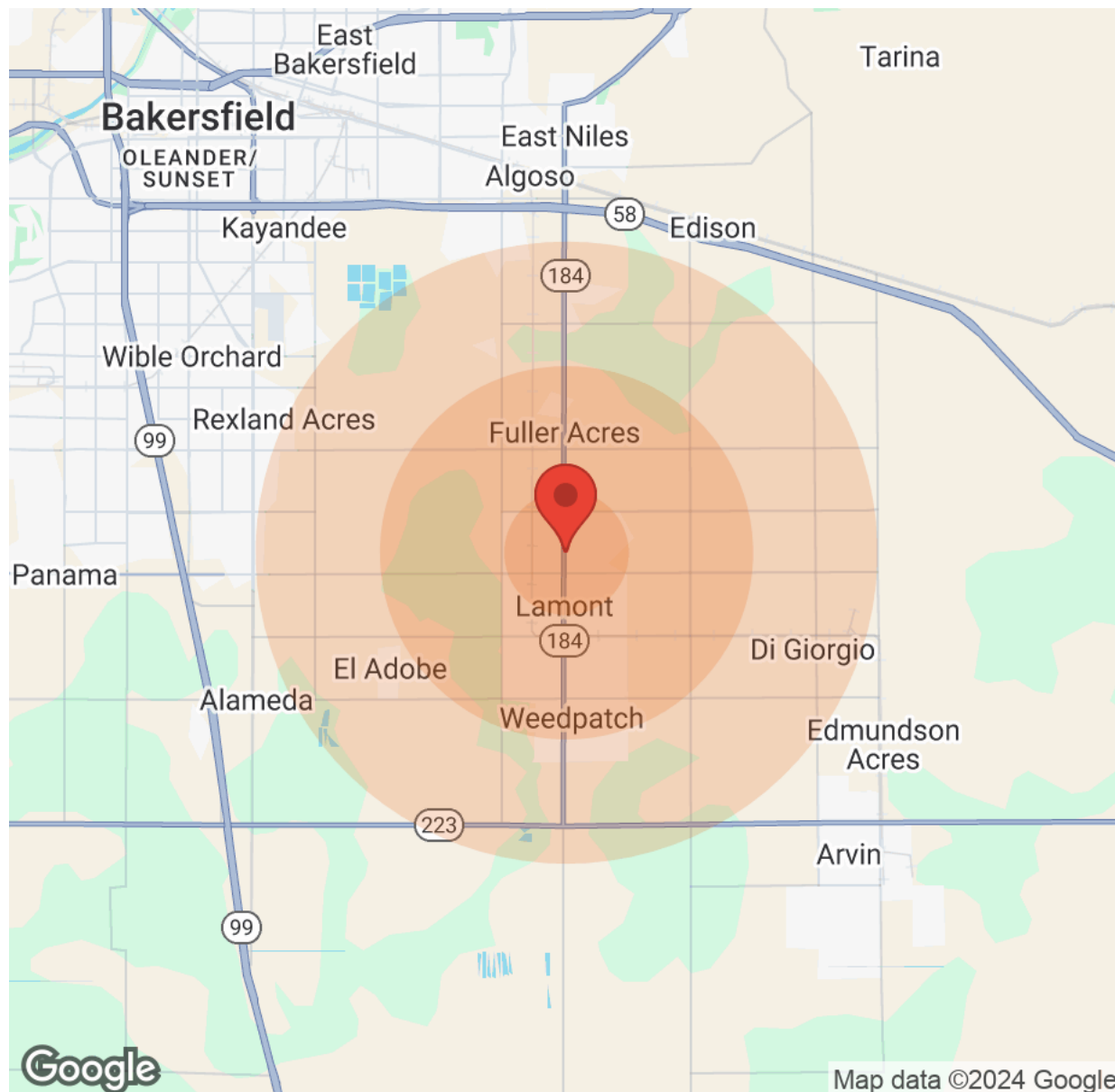
SOUTH PACIFIC COMMERCIAL
5330 Office Center Ct, Ste 34
Bakersfield, CA 93309



JOSE CHAVEZ
President
C: (661) 599-3138
jose@sopacre.com
01160727, CA

DEMOGRAPHICS

9111 WEEDPATCH HIGHWAY | LAMONT, CA 93241



Population	1 Mile	3 Miles	5 Miles
Male	4,376	12,058	22,218
Female	3,410	11,032	20,783
Total Population	7,786	23,090	43,001

Age	1 Mile	3 Miles	5 Miles
Ages 0-14	2,336	7,128	13,376
Ages 15-24	1,331	3,977	7,561
Ages 25-54	3,165	9,205	15,898
Ages 55-64	560	1,607	3,204
Ages 65+	394	1,173	2,962

Race	1 Mile	3 Miles	5 Miles
White	3,309	10,358	20,093
Black	29	111	734
Am In/AK Nat	61	212	322
Hawaiian	N/A	N/A	N/A
Hispanic	7,442	21,678	36,875
Multi-Racial	8,760	24,790	42,980

Income	1 Mile	3 Miles	5 Miles
Median	\$36,142	\$32,623	\$35,994
< \$15,000	331	937	1,602
\$15,000-\$24,999	196	800	1,440
\$25,000-\$34,999	390	1,253	1,929
\$35,000-\$49,999	379	823	1,996
\$50,000-\$74,999	351	939	2,135
\$75,000-\$99,999	68	174	660
\$100,000-\$149,999	68	287	493
\$150,000-\$199,999	15	77	202
> \$200,000	N/A	N/A	N/A

Housing	1 Mile	3 Miles	5 Miles
Total Units	1,683	5,733	11,431
Occupied	1,598	5,254	10,384
Owner Occupied	608	2,426	5,563
Renter Occupied	990	2,828	4,821
Vacant	85	479	1,047

SOUTH PACIFIC COMMERCIAL
 5330 Office Center Ct., Ste 34
 Bakersfield, CA 93309



JOSE CHAVEZ
 President
 C: (661) 599-3138
jose@sopacre.com
 01160727, CA

DISCLAIMER

9111 WEEDPATCH HIGHWAY

All materials and information received or derived from South Pacific Commercial its directors, officers, agents, advisors, affiliates and/or any third party sources are provided without representation or warranty as to completeness, veracity, or accuracy, condition of the property, compliance or lack of compliance with applicable governmental requirements, developability or suitability, financial performance of the property, projected financial performance of the property for any party's intended use or any and all other matters.

Neither South Pacific Commercial its directors, officers, agents, advisors, or affiliates makes any representation or warranty, express or implied, as to accuracy or completeness of the materials or information provided, derived, or received. Materials and information from any source, whether written or verbal, that may be furnished for review are not a substitute for a party's active conduct of its own due diligence to determine these and other matters of significance to such party. South Pacific Commercial will not investigate or verify any such matters or conduct due diligence for a party unless otherwise agreed in writing.

EACH PARTY SHALL CONDUCT ITS OWN INDEPENDENT INVESTIGATION AND DUE DILIGENCE.

Any party contemplating or under contract or in escrow for a transaction is urged to verify all information and to conduct their own inspections and investigations including through appropriate third-party independent professionals selected by such party. All financial data should be verified by the party including by obtaining and reading applicable documents and reports and consulting appropriate independent professionals. South Pacific Commercial makes no warranties and/or representations regarding the veracity, completeness, or relevance of any financial data or assumptions. South Pacific Commercial does not serve as a financial advisor to any party regarding any proposed transaction.

All data and assumptions regarding financial performance, including that used for financial modeling purposes, may differ from actual data or performance. Any estimates of market rents and/or projected rents that may be provided to a party do not necessarily mean that rents can be established at or increased to that level. Parties must evaluate any applicable contractual and governmental limitations as well as market conditions, vacancy factors and other issues in order to determine rents from or for the property. Legal questions should be discussed by the party with an attorney. Tax questions should be discussed by the party with a certified public accountant or tax attorney. Title questions should be discussed by the party with a title officer or attorney. Questions regarding the condition of the property and whether the property complies with applicable governmental requirements should be discussed by the party with appropriate engineers, architects, contractors, other consultants, and governmental agencies. All properties and services are marketed by South Pacific Commercial in compliance with all applicable fair housing and equal opportunity laws.

SOUTH PACIFIC COMMERCIAL
5330 Office Center Ct , Ste 34
Bakersfield, CA 93309



PRESENTED BY:

JOSE CHAVEZ
President
C: (661) 599-3138
jose@sopacre.com
01160727, CA

The calculations and data presented are deemed to be accurate, but not guaranteed. They are intended for the purpose of illustrative projections and analysis. The information provided is not intended to replace or serve as substitute for any legal, accounting, investment, real estate, tax or other professional advice, consultation or service. The user of this software should consult with a professional in the respective legal, accounting, tax or other professional area before making any decisions.