

# MARYLAND CORPORATE CENTER

7375 Executive Place, Lanham, MD 20706  
Prince George's County

OFFICE SPACE FOR LEASE  
AS SMALL AS 1,467 SF



## AVAILABILITIES

- **Suite 170:** 1,467 SF
- **Suite 200:** 4,464 SF
- **Suite 202-A:** 1,596 SF

## BUILDING FEATURES

- Lease Rate: \$18.95, Full Service
- 65,000 rentable square feet
- Four (4) stories
- 3.45 acres
- Zoned I-1
- One (1) mile from NASA / Goddard Space Flight Center
- 3.5 parking spaces per 1,000 square feet
- Transportation to Greenbelt Metro & PG County bus service (TheBus)
- Easy access to Balto/Wash. Pkwy (MD Rt. 295) & Capital Beltway (I-495)
- On-site shared conference center

OWNED & MANAGED BY:



THE FALLSTAFF  
GROUP, INC.

GOLDMAN PARTNERS  
GROUP

DIRECT: (410) 736 - 1026

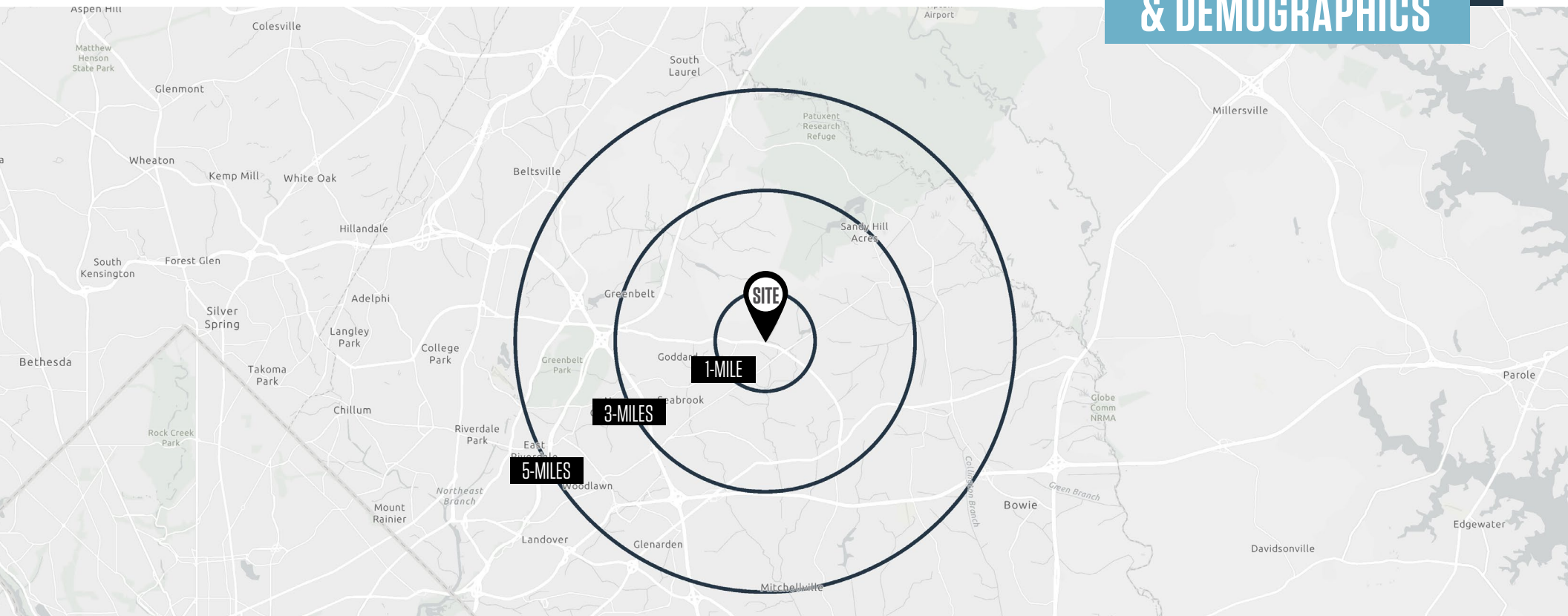
Please call or text

# MARYLAND CORPORATE CENTER

7375 Executive Place, Lanham, MD 20706  
Prince George's County





LOCATION

& DEMOGRAPHICS



## TRAFFIC COUNTS | 2023

Greenbelt Road [MD-193]	26,562 ADT
Baltimore/Washington Pkwy [MD-295]	107,812 ADT
Lanham-Severn Road [MD 564]	17,774 ADT

	1-MILE	3-MILES	5-MILES		1-MILE	3-MILES	5-MILES
	Population 11,300	69,130	191,162		Households 3,776	23,147	62,897
	Daytime Population 5,536	32,651	91,033		Average Household Income \$123,933	\$132,840	\$135,788

# MARYLAND CORPORATE CENTER

7375 Executive Place, Lanham, MD 20706  
Prince George's County

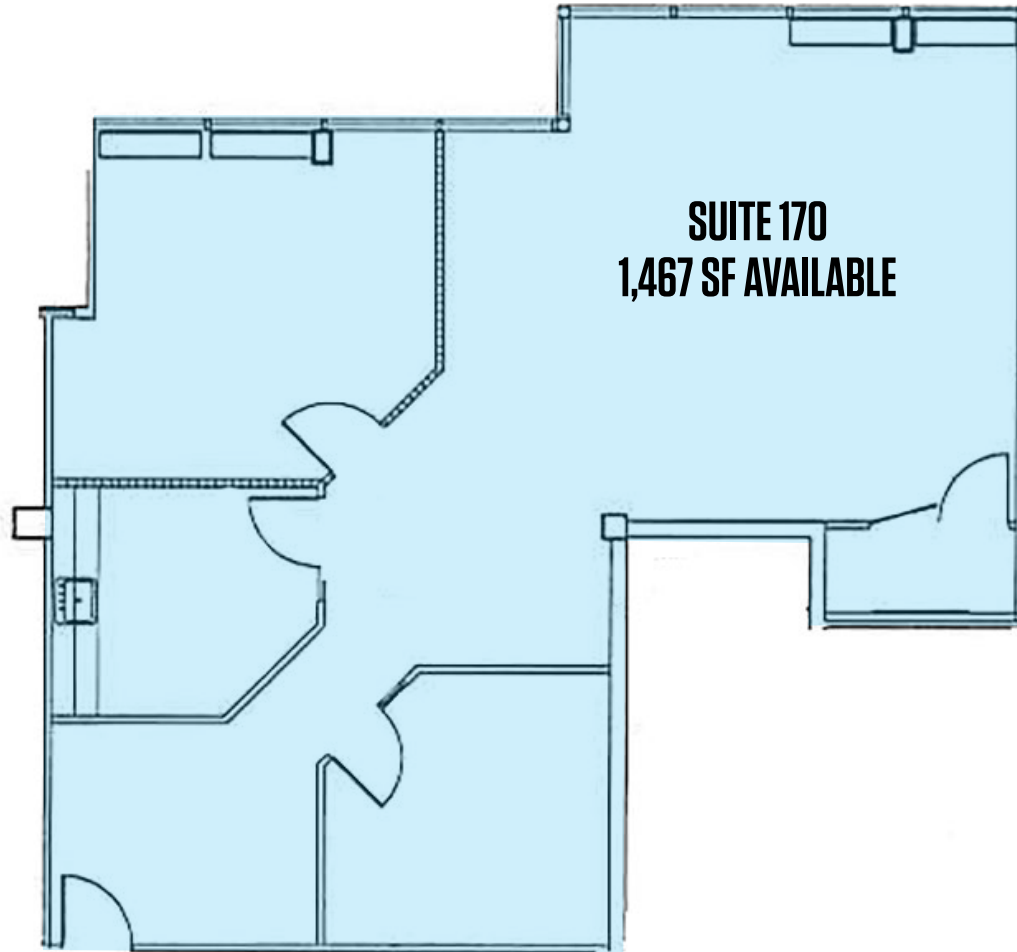
MARKET AERIAL



# MARYLAND CORPORATE CENTER

7375 Executive Place, Lanham, MD 20706  
Prince George's County

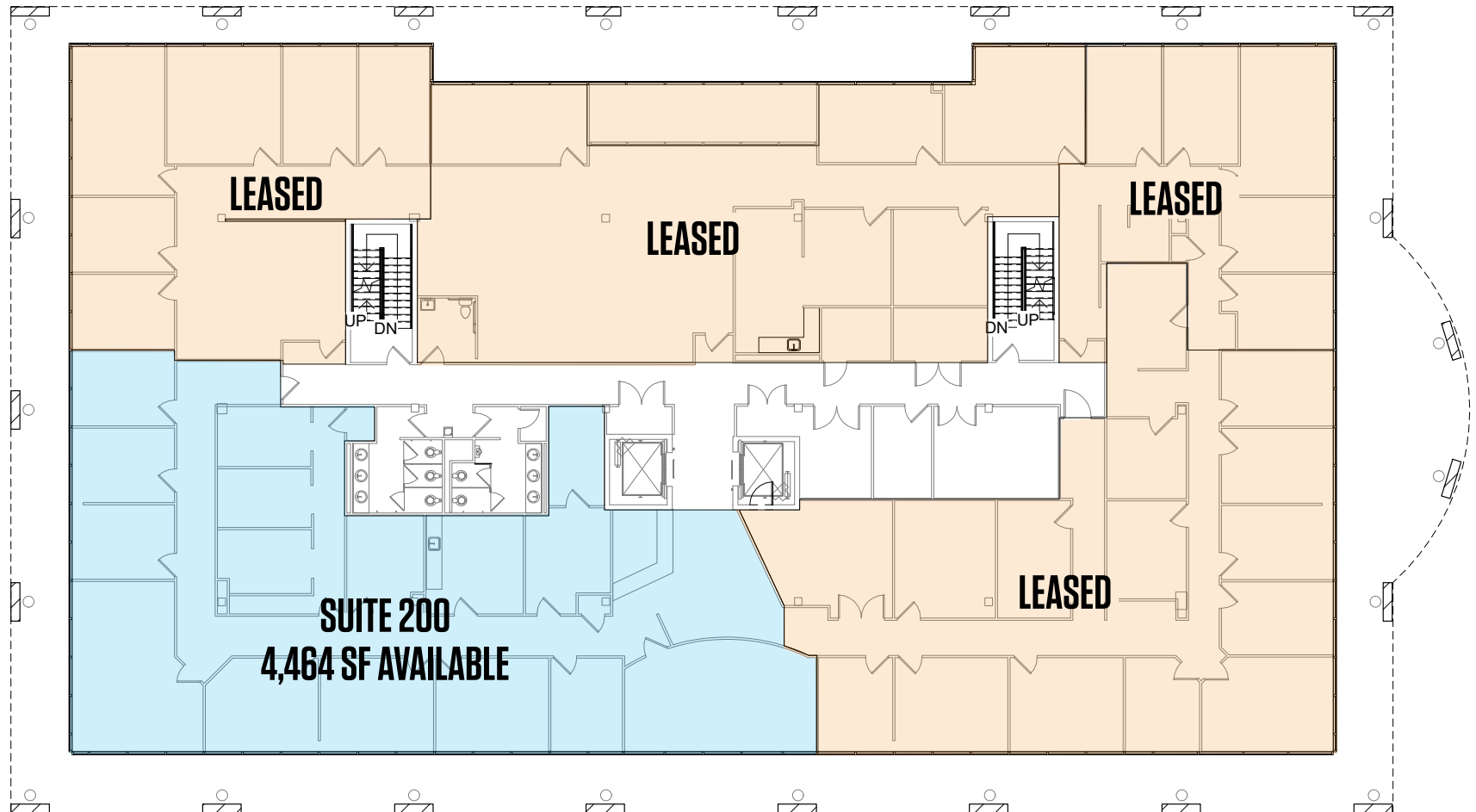
## FIRST FLOOR PLAN



# MARYLAND CORPORATE CENTER

7375 Executive Place, Lanham, MD 20706  
Prince George's County

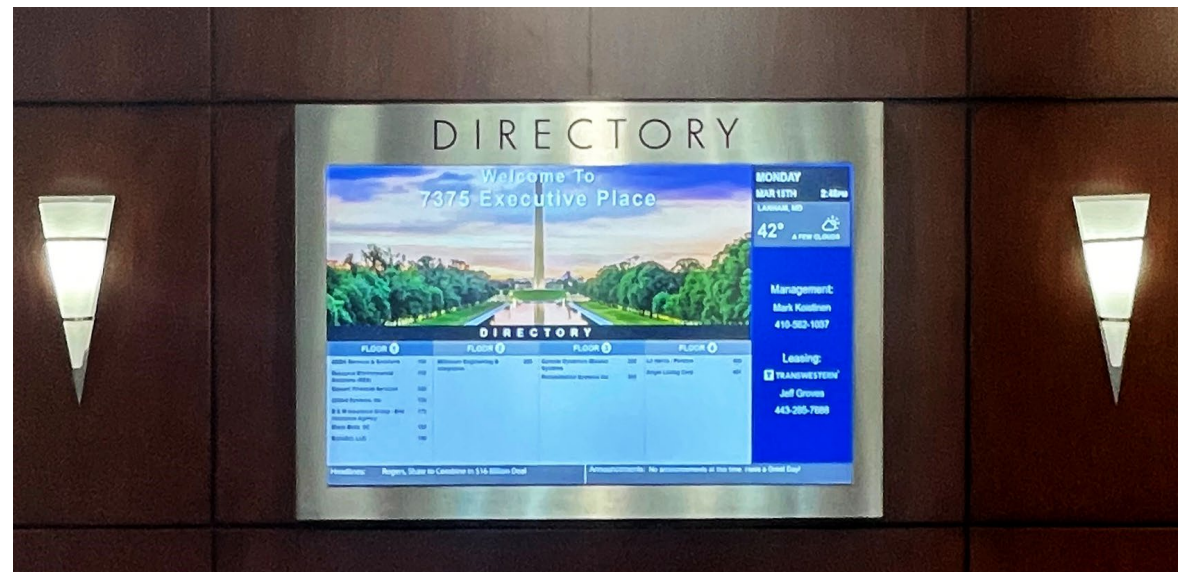
## SECOND FLOOR PLAN



# MARYLAND CORPORATE CENTER

7375 Executive Place, Lanham, MD 20706  
Prince George's County

PHOTOS



# MARYLAND CORPORATE CENTER

7375 Executive Place, Lanham, MD 20706

Prince George's County

For More Information, Please Contact:

DIRECT: (410) 736 - 1026

Please call or text

THE FALLSTAFF GROUP, INC

GOLDMAN PARTNERS GROUP

