

PREMIER OFFICE SUITES AVAILABLE FOR LEASE

EVES DRIVE
CORPORATE
CENTER



2 EVES DRIVE MARLTON, NJ 08053



Bethany Brown
Vice President
267.226.6602
bethany.brown@wolfcre.com

The foregoing information was furnished to us by sources which we deem to be reliable, but no warranty or representation is made as to the accuracy thereof.
Subject to correction of errors, omissions, change of price, prior sale or withdrawal from market without notice.



Wolf Commercial Real Estate
www.WolfCRE.com



PROPERTY DESCRIPTION

Location: 2 Eves Drive
Marlton, NJ 08053

Size/SF Available: First Floor

Suite 104: +/- 1,320 SF
Suite 105: +/- 1,267 SF
Suite 110: +/- 5,411 SF

Second Floor

Suite 200: +/- 5,089 SF
Suite 204: +/- 6,500 SF

Lease Price: \$12.00/SF

Occupancy: Immediate

PROPERTY AREA/HIGHLIGHTS

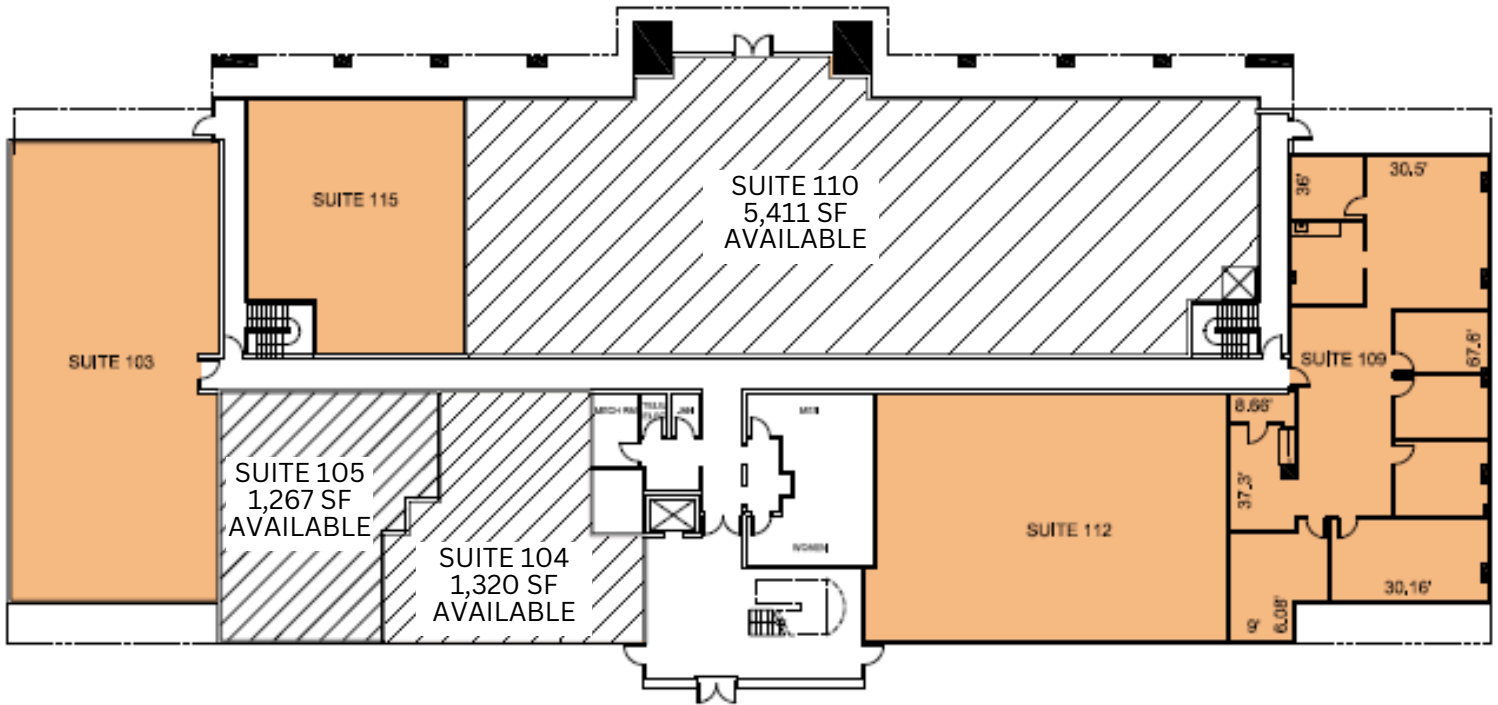
- Monument tenant directory and suite signage available
- Efficient layouts with bullpen areas and individual offices
- Ample parking
- Available for immediate occupancy
Conveniently situated off Route 73
- Two miles from NJ Turnpike, I-295 and Route 70
- Immediate access to various local amenities, national retailers and more



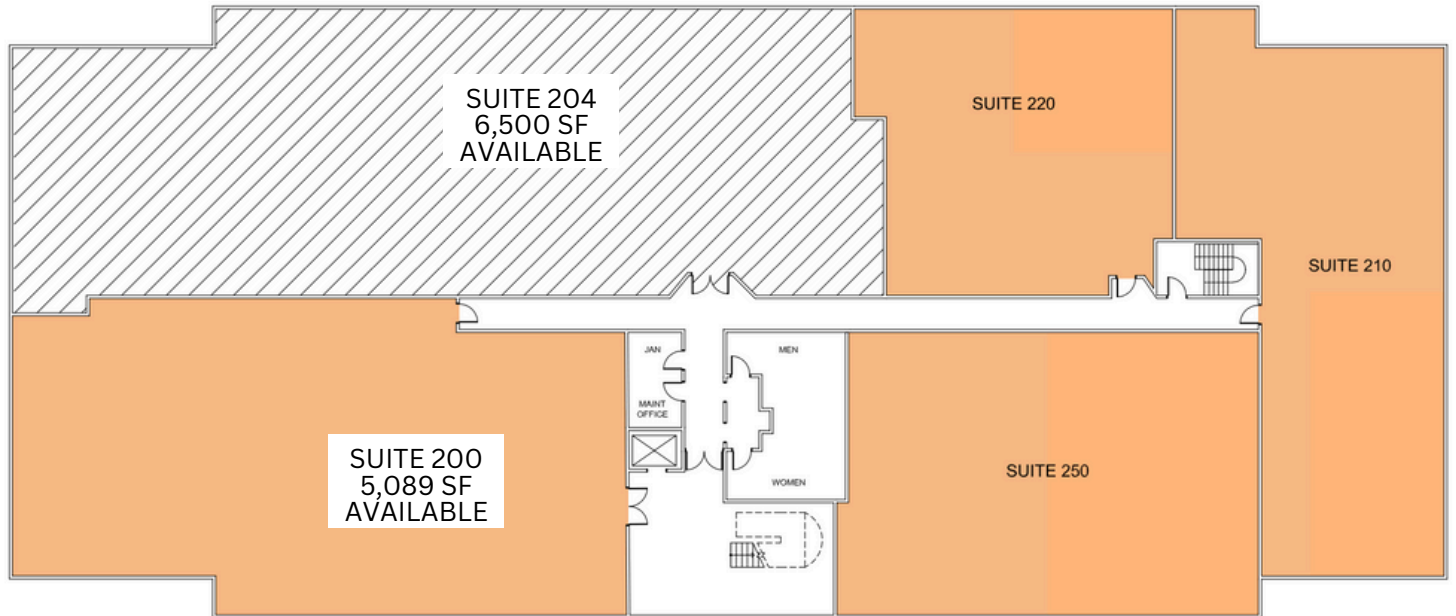
The foregoing information was furnished to us by sources which we deem to be reliable, but no warranty or representation is made as to the accuracy thereof. Subject to correction of errors, omissions, change of price, prior sale or withdrawal from market without notice.

2 EVES DRIVE, MARLTON, NJ 08053

FIRST FLOOR PLAN



SECOND FLOOR PLAN



The foregoing information was furnished to us by sources which we deem to be reliable, but no warranty or representation is made as to the accuracy thereof. Subject to correction of errors, omissions, change of price, prior sale or withdrawal from market without notice.

2 EVES DRIVE, MARLTON, NJ 08053

ADDITIONAL PHOTOS



The foregoing information was furnished to us by sources which we deem to be reliable, but no warranty or representation is made as to the accuracy thereof. Subject to correction of errors, omissions, change of price, prior sale or withdrawal from market without notice.