



UNIQUE USER-INVESTOR OPPORTUNITY TWO BUILDING OFFICE COMPLEX FOR SALE OR LEASE

1-3 E. Main Street
Flemington, New Jersey

Property Features

- Two building office complex situated on 1.42 acres, located in the heart of Flemington's business district
- 1 E. Main Street is a ± 27,300 sf two story brick office building featuring a marble foyer, marble bathrooms, elevator and central air, with 78 parking spaces
- 3 E. Main Street is a historic Victorian building comprised of ± 1,750 sf, featuring decorative fireplaces, classic custom woodwork, and an open porch
- The entire property is surrounded by beautiful stone walls and gated stone archways with professional landscaping
- Centrally located minutes Flemington Municipal Offices, Hunterdon Medical Center, Post Office, Restaurants and Shopping
- Minutes from Route 31 and Route 202
- **Call for sale and lease price information**

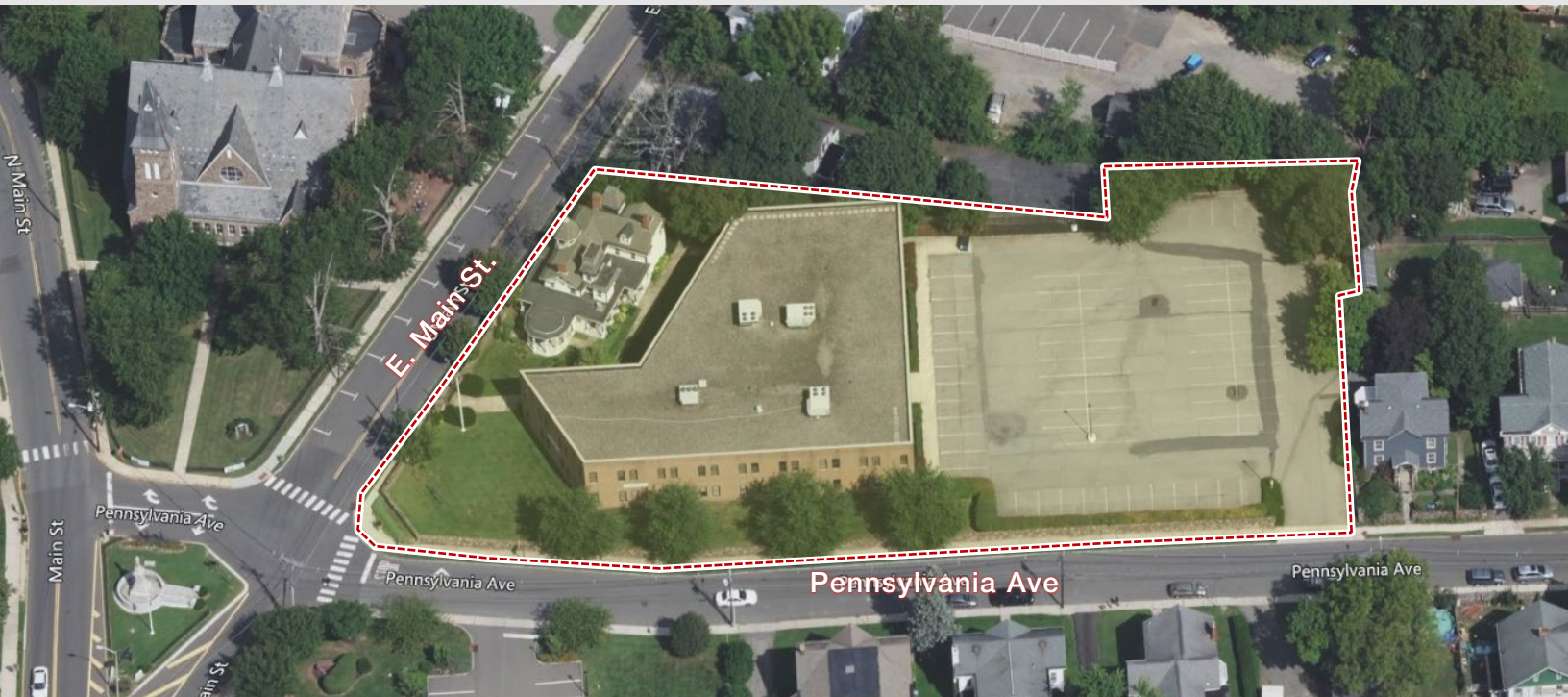


For further information
please contact Exclusive Broker:

SITE PLAN

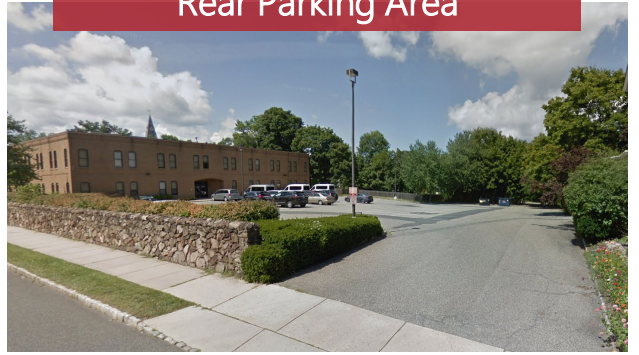


Site Plan
scale 1/16" = 1' 0"



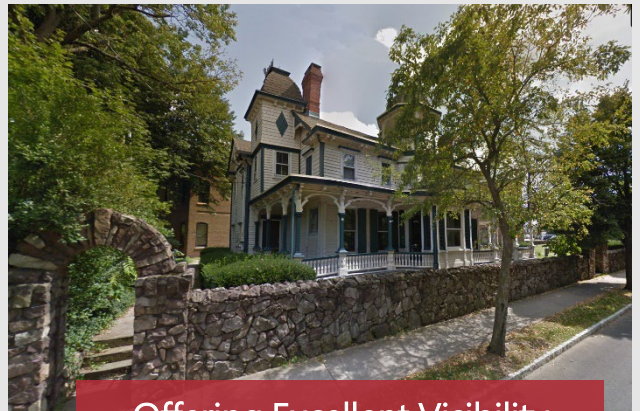
Victorian Plaza

1-3 E. Main Street, Flemington



Courtyard and Rear Parking Area

1 E. Main Street



Offering Excellent Visibility Along E. Main Street

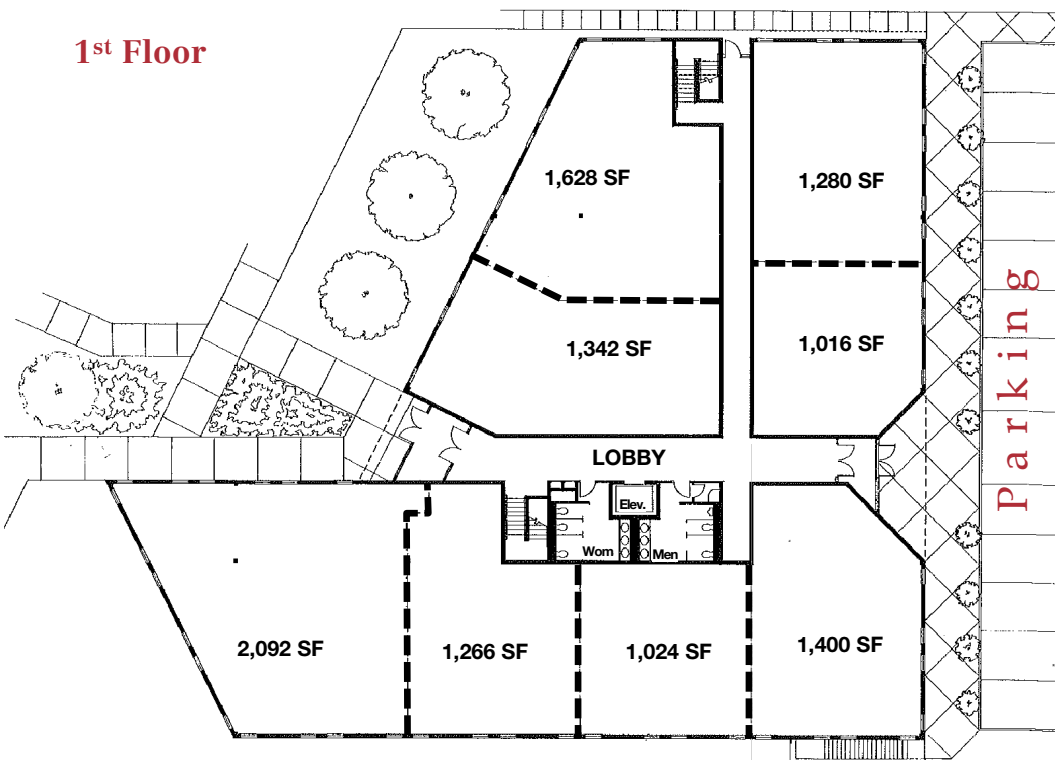
3 E. Main Street

FOR SALE OR LEASE
TWO BUILDING OFFICE COMPLEX

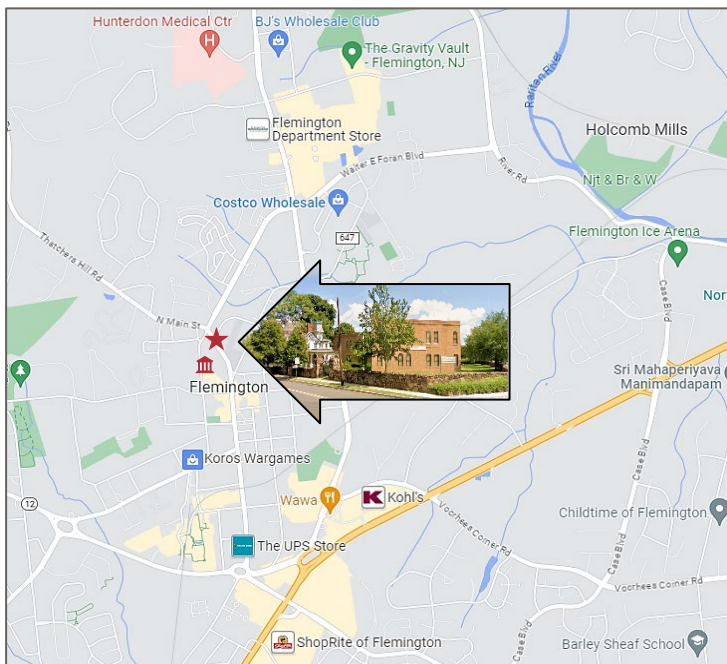
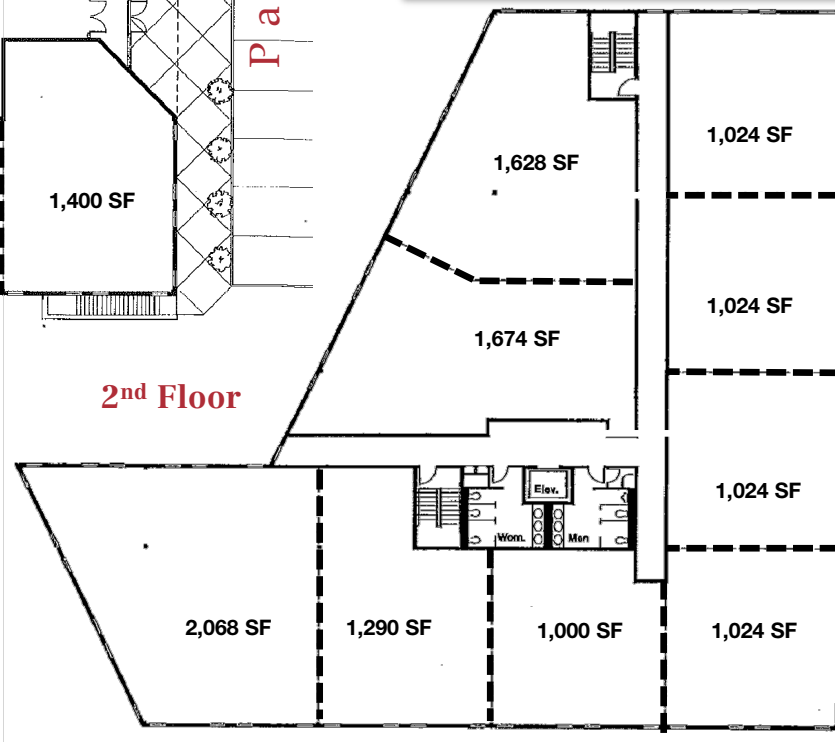
Victorian Plaza

1-3 E. Main Street, Flemington, NJ

1st Floor



2nd Floor



- Centrally located within walking distance to Hunterdon County Courthouse, Flemington Municipal Offices, Post Office, Banks, Local Shopping, and Restaurants
- 2 miles to Hunterdon Medical Center
- Only minutes away from Route 202 & Route 31
- 60 miles to Manhattan and 50 miles to Philadelphia

NAI DiLeo-Bram & Co.

Commercial Real Estate Services, Worldwide.

90 Woodbridge Center Drive, Suite 160
Woodbridge, NJ 07095
732 985 3000 | naidb.com

David Simon
Chief Operating Officer
732.985.3000 Ext. 220
dsimon@naidb.com

Jack Feeny
Vice President
732.985.3000 Ext. 222
jfeeny@naidb.com

Kyle Gerace
Associate
732.985.3000 Ext. 229
kgerace@naidb.com

For further information
please contact Exclusive Broker: