



8615

8615
ROSWELL RD.
ATLANTA, GA 30350

FOR SALE
20,540+/- SF Freestanding Building

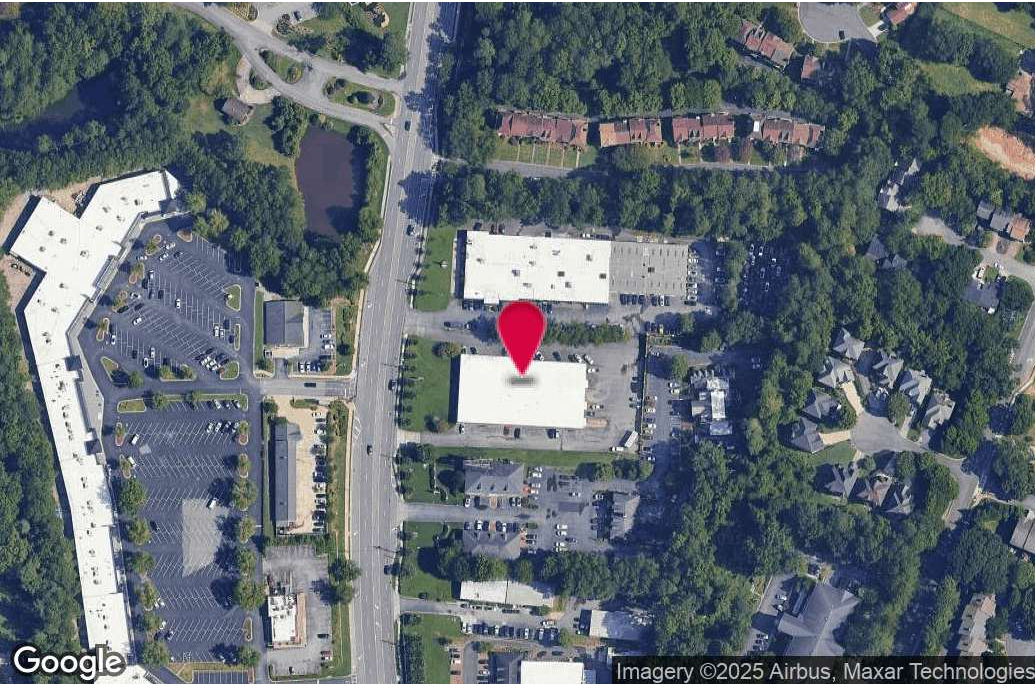
BOB STEPHENS
Vice President
404.942.2076
bstephens@kingindustrial.com

King Industrial
Realty, Inc.

Industrial • Commercial • Investment
404.942.2000 | kingindustrial.com



FOR SALE
20,540+/- SF
FREESTANDING
BUILDING



PROPERTY HIGHLIGHTS

- 10,000 +/- SF Office
- 2 Dock High Doors
- 1 Drive-In Door
- 12' Clear Height
- Ample Parking
- Frontage on Roswell Road
- Traffic Count: Approx. 28,500 Vehicles Per Day

OFFERING SUMMARY

Lot Size:	1.67 Acres
Building Size:	20,540 SF
Zoning:	C2

BOB STEPHENS

Vice President
404.942.2076
bstephens@kingindustrial.com

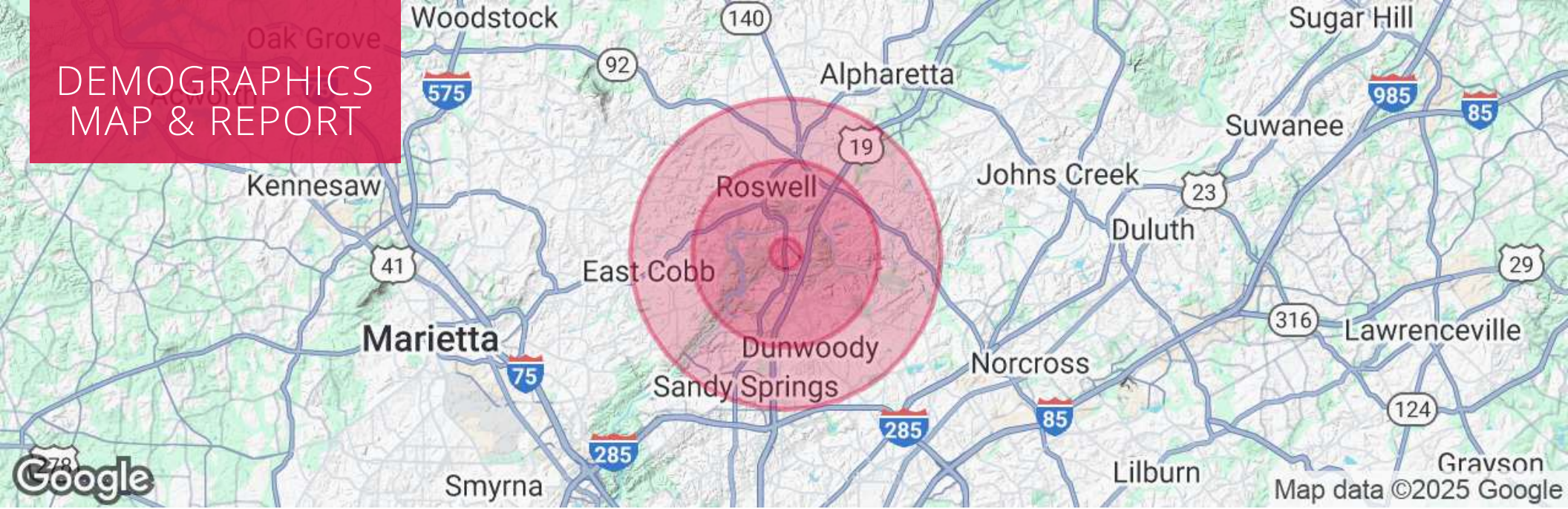
ADDITIONAL
PHOTOS



AERIAL



DEMOGRAPHICS MAP & REPORT



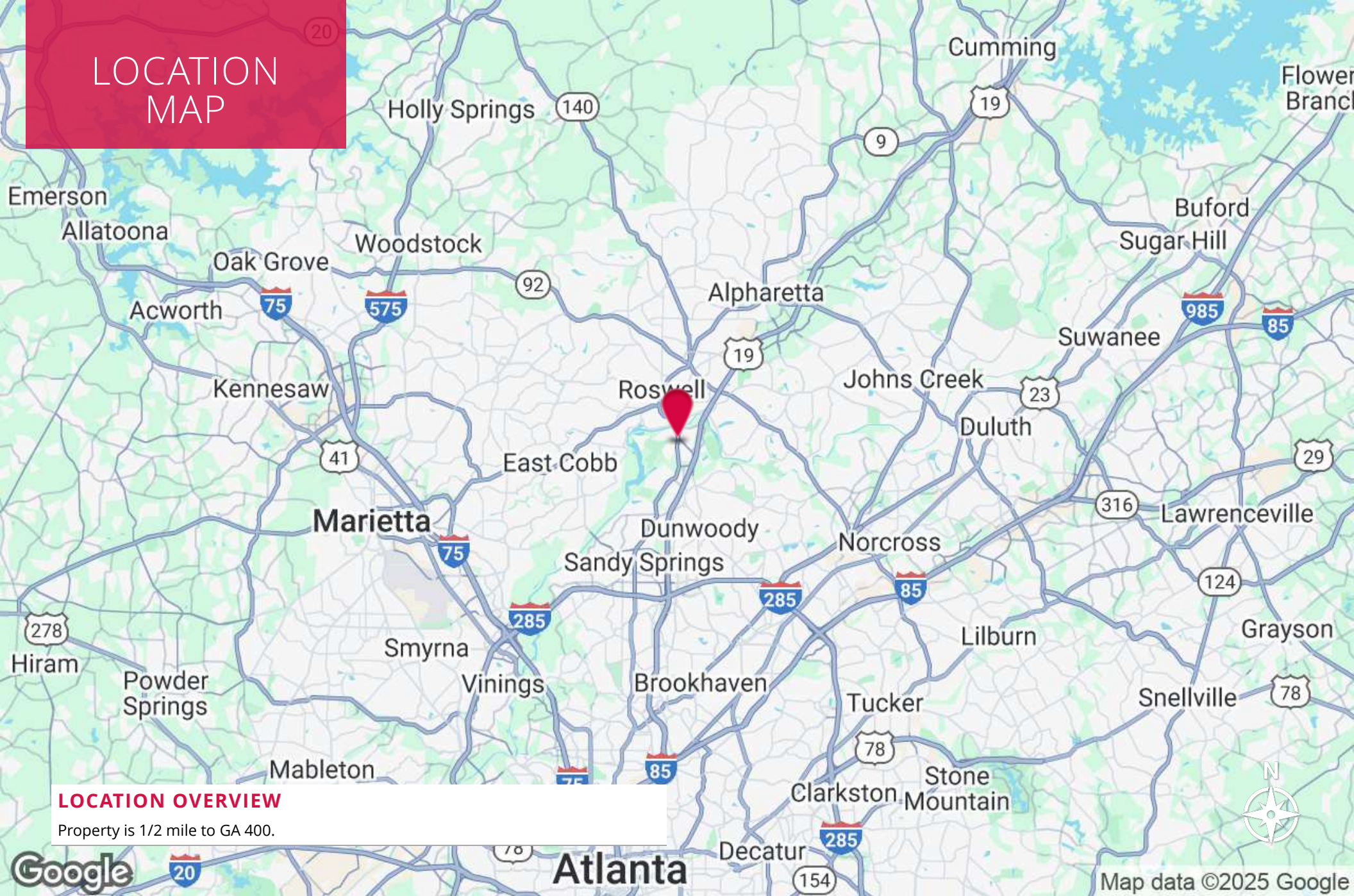
POPULATION

	0.5 MILES	3 MILES	5 MILES
Total Population	3,238	76,356	213,709
Average Age	41	39	41
Average Age (Male)	39	39	40
Average Age (Female)	42	40	41

HOUSEHOLDS & INCOME

	0.5 MILES	3 MILES	5 MILES
Total Households	1,721	33,626	88,200
# of Persons per HH	1.9	2.3	2.4
Average HH Income	\$99,794	\$151,511	\$173,060
Average House Value	\$426,257	\$561,094	\$620,743

LOCATION MAP



LOCATION OVERVIEW

Property is 1/2 mile to GA 400.

8615

EXCLUSIVELY LISTED BY:

BOB STEPHENS

Vice President

bstephens@kingindustrial.com

404.942.2076

KING Industrial
Realty, Inc.

Industrial • Commercial • Investment

404.942.2000 | kingindustrial.com