

# For Lease

## Powerline Park

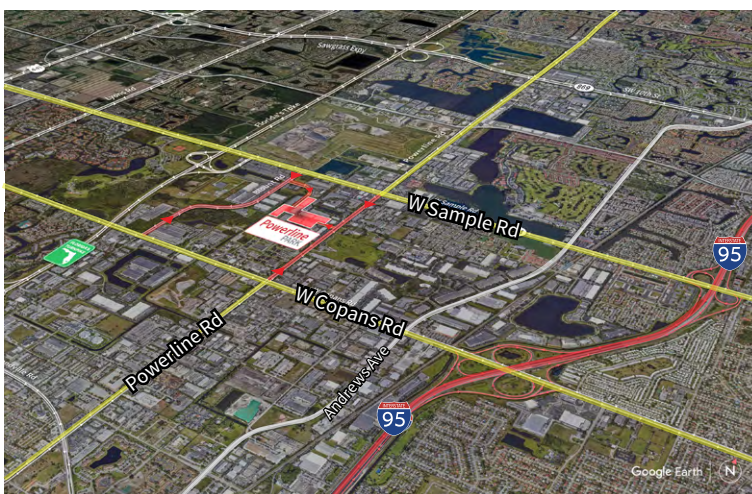
3046 NW 25<sup>th</sup> Avenue  
Pompano Beach, FL 33069



Industrial Space For Lease  
**2,988 SF**

### Powerline Park

3046 NW 25<sup>th</sup> Avenue, Pompano Beach, FL 33069



### Location

- Easy access off Sample Road and Powerline Road
- Excellent access to I-95 and the Florida Turnpike
- Equidistant to Fort Lauderdale/Hollywood International Airport and Palm Beach International Airport

### Space Features

- 2,988 SF total
- 418 SF of office
- 2,570 SF of warehouse
- 16' clear height
- One (1) grade level door
- Parking ratio: 2.0/1,000 sf
- Available 11/01/2023



© 2023 Jones Lang LaSalle IP, Inc.

**Yuri Quispe**

D +1 954 233 3462

M +1 772 201 5305

yuri.quispe@jll.com

**Peter Sheridan**

D +1 954 653 3235

M +1 954 439 4941

peter.sheridan@jll.com

**Peter Johnston**

D +1 954 233 3429

M +1 954 980 3224

peter.johnston1@jll.com



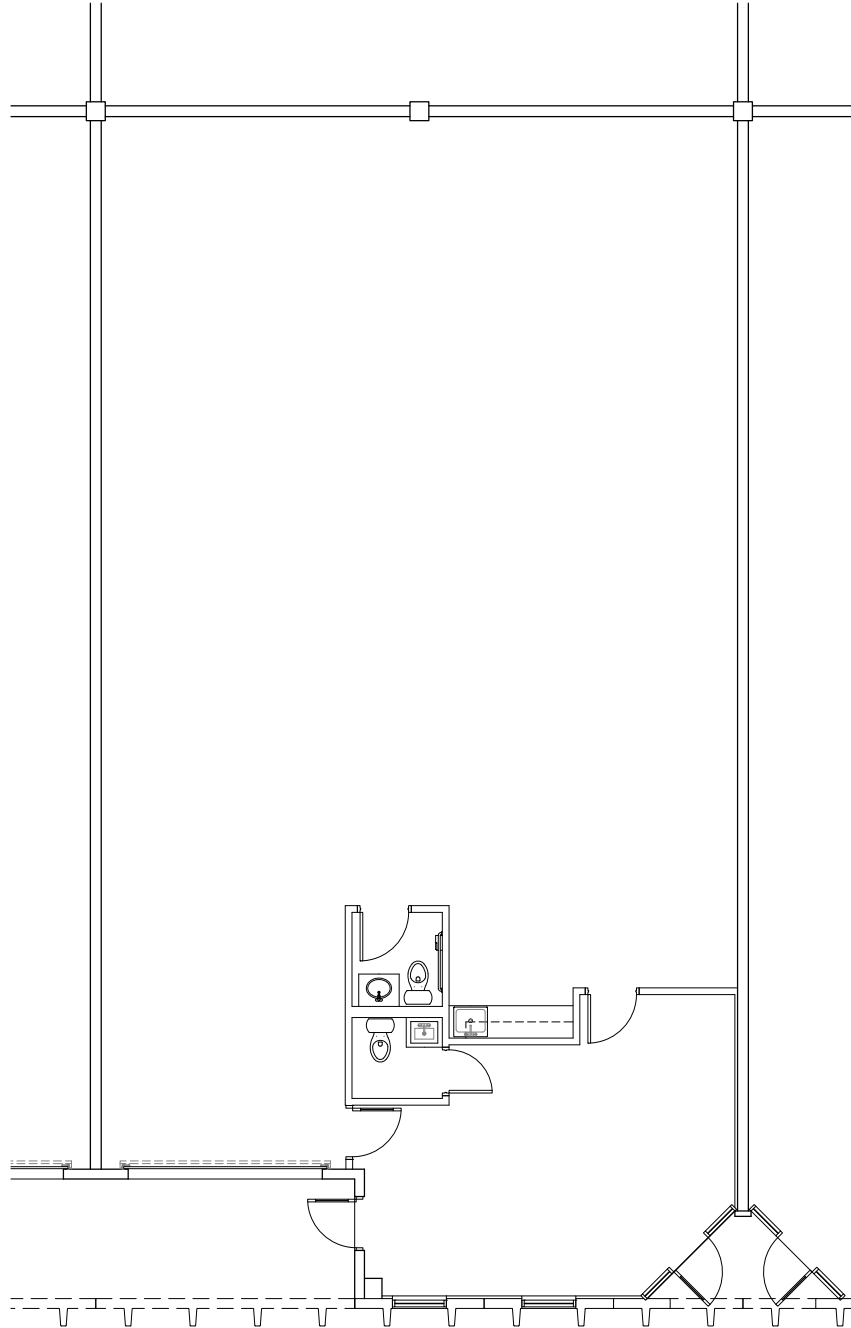
# For Lease

## Powerline Park

3045 NW 25<sup>th</sup> Avenue, Pompano Beach, FL 33069

### Powerline Park Floor Plan - Suite 15

Total: 2,988 SF  
Office: 418 SF  
Warehouse: 2,570 SF



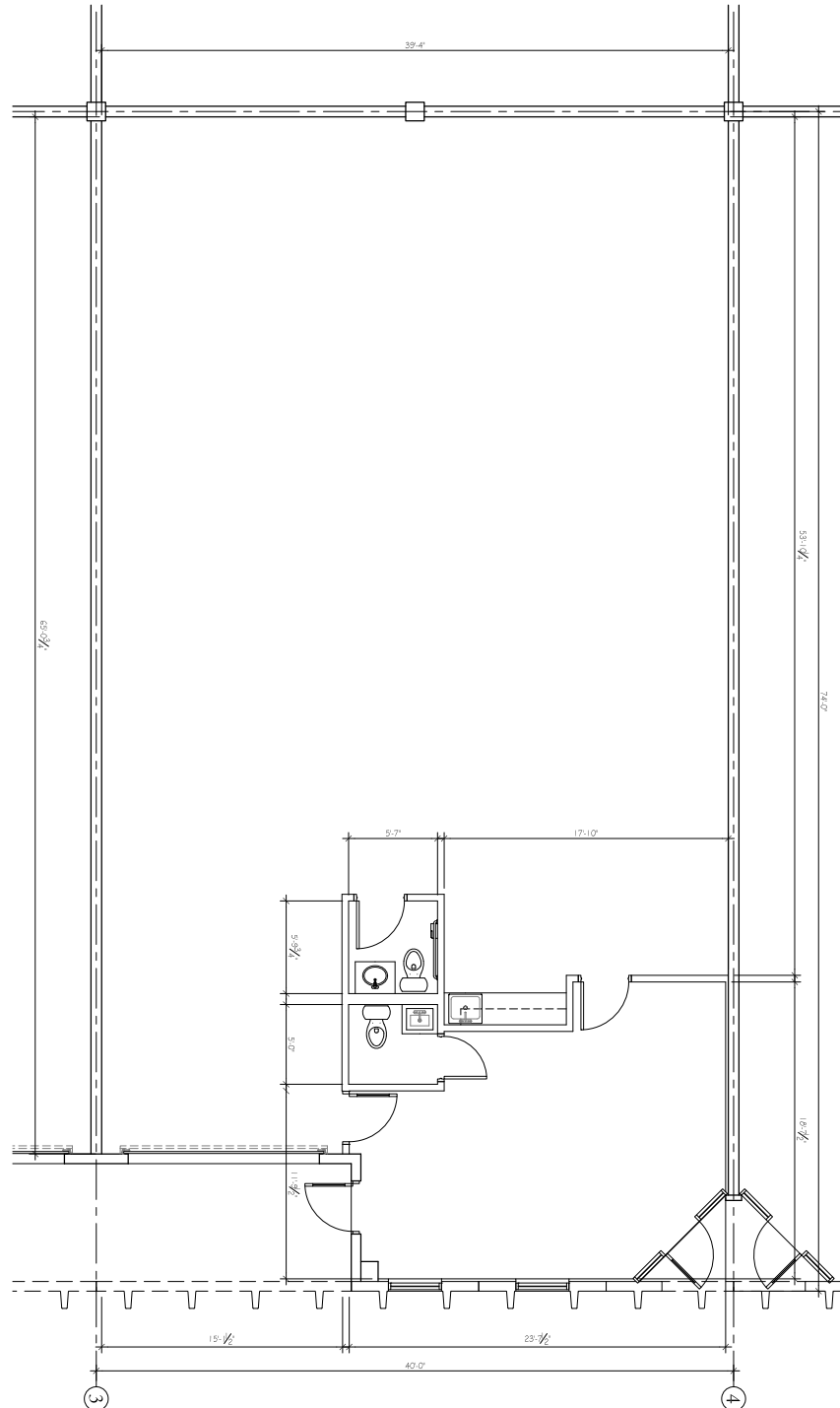
# For Lease

# Powerline Park

3046 NW 25<sup>th</sup> Avenue, Pompano Beach, FL 33069

## Powerline Park Dimensioned Floor Plan - Suite 15

Total: 2,988 SF  
Office: 418 SF  
Warehouse: 2,570 SF



# For Lease

# Powerline Park

3046 NW 25<sup>th</sup> Avenue, Pompano Beach, FL 33069

## Powerline Park Site Plan

 - Subject Property



Building	Suite	Total (SF)	Office (SF)	Warehouse (SF)	Loading	Clear Height	Available Date
7	15	2,988	418	2,570	1 G	16'	11/01/2023

